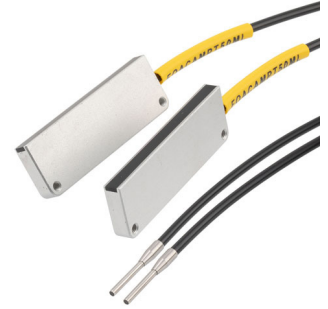


Fiber Optic Sensor Cable, 2M Array-type, Thru-beam, R25 POF with Rectangular Sensing End and 50 mm Wide Right Angle Beam Exit



FOACAMPT50ML

Fiber Optic Sensor Cable

Features

- Durable aluminum head
- Flexible jacket
- Standard 2.2mm diameter ferrules
- Stable performance

Applications

- Industrial automation
- Discrete manufacturing
- High volume production
- Automotive manufacturing
- Stamping and plastic injection molding
- Packaging
- Food and Beverage
- Warehouse automation

Description

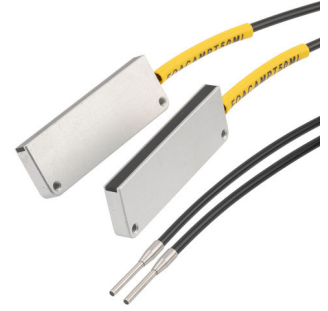
L-com's FOACAMPT50ML fiber optic sensor cable is a thru-beam type optical cable. This 2M (meter) fiber optic sensor cable is in stock and ready to ship on the same business day of the order. Our black thru-beam sensor cable has a durable aluminum head, R25 bend radius, and flexible polyethylene jacket, which makes the cable well-suited for demanding industrial environments. The 2.2mm amplifier ends make this cable compatible with industry-standard amplifier ports, making interchanging quick and easy.

General Specifications

Type	Array
Design Type	Thru-beam
Cable Type	POF
Jacket Type	PE Black
Sensing Distance	600 to 1,100 mm
Cable Length	2 m
Cable Head Material	Aluminum
Bend Radius	25 mm
Compatible Products	Fiber Optic Sensor Amplifiers
Detected Object	5mm
Number of Cores	32
Beam Exit	Right Angle
Cable Head Shape	Rectangular
Notes, Electrical/Optical	Minimum sensing distance with FOACAMPG1 amp, maximum sensing distance with FOACAMPC1 amp
Notes	Different amplifiers will impact sensing distance.

Click the following link (or enter part number in "SEARCH" on website) to obtain additional part information including price, inventory and certifications:
[Fiber Optic Sensor Cable, 2M Array-type, Thru-beam, R25 POF with Rectangular Sensing End and 50 mm Wide Right Angle Beam Exit FOACAMPT-](#)

Fiber Optic Sensor Cable, 2M Array-type, Thru-beam, R25 POF with Rectangular Sensing End and 50 mm Wide Right Angle Beam Exit



FOACAMPT50ML

Fiber Optic Sensor Cable

Environmental Specifications

Temperature

Operating Range -20 to +50 deg C

Storage Range -30 to +85 deg C

Humidity

Operating Relative 35% to 85%

Compliance Certifications

CE Compliance Yes

Fiber Optic Sensor Cable, 2M Array-type, Thru-beam, R25 POF with Rectangular Sensing End and 50 mm Wide Right Angle Beam Exit from L-com has same day shipment for domestic and International orders. Our portfolio includes coaxial cable assemblies, connectors, adapters and custom products as well as lightning and surge protectors, NEMA rated enclosures, and an RF product line which includes antennas, amplifiers, passive, and active components.

The information contained within this document is accurate to the best of our knowledge and representative of the part described herein. It may be necessary to make modifications to the part and/or the documentation of the part in order to implement improvements. L-com reserves the right to make such changes as required. Unless otherwise stated, all specifications are nominal. L-com does not make any representation or warranty regarding the suitability of the part described herein for any particular purpose, and L-com does not assume liability arising out of the use of any part or document.

