

Fiber Optic Sensor Cable, 1M Small Bend Radius, Thru-beam, R4 POF, M1.5 Cylindrical Sensing End with Straight Beam Exit



## FOACAMPTW59

### Fiber Optic Sensor Cable

#### Features

- Durable stainless steel head
- Flexible jacket
- Standard 2.2mm diameter ferrules
- Stable performance

#### Applications

- Industrial automation
- Discrete manufacturing
- High volume production
- Automotive manufacturing
- Stamping and plastic injection molding
- Packaging
- Food and Beverage
- Warehouse automation

#### Description

L-com's FOACAMPTW59 fiber optic sensor cable is a thru-beam type optical cable. This 1M (meter) fiber optic sensor cable is in stock and ready to ship on the same business day of the order. Our black thru-beam sensor cable has a durable stainless steel head, R4 bend radius, and flexible polyethylene jacket, which makes the cable well-suited for demanding industrial environments. The 2.2mm amplifier ends make this cable compatible with industry-standard amplifier ports, making interchanging quick and easy.

#### General Specifications

Type	Small Bend Radius
Design Type	Thru-beam
Cable Type	POF
Jacket Type	PE Black
Sensing Distance	100 to 350 mm
Cable Length	1 m
Cable Head Material	Stainless Steel
Bend Radius	4 mm
Compatible Products	Fiber Optic Sensor Amplifiers
Beam Exit	Straight
Cable Head Shape	Cylindrical
Notes, Electrical/Optical	Minimum sensing distance with FOACAMPG1 amp, maximum sensing distance with FOACAMPC1 amp
Notes	Different amplifiers will impact sensing distance.

Click the following link (or enter part number in "SEARCH" on website) to obtain additional part information including price, inventory and certifications:  
[Fiber Optic Sensor Cable, 1M Small Bend Radius, Thru-beam, R4 POF, M1.5 Cylindrical Sensing End with Straight Beam Exit FOACAMPTW59](#)

Fiber Optic Sensor Cable, 1M Small Bend Radius, Thru-beam, R4 POF, M1.5 Cylindrical Sensing End with Straight Beam Exit



## FOACAMPTW59

### Fiber Optic Sensor Cable

---

#### Environmental Specifications

##### Temperature

Operating Range -20 to +50 deg C

Storage Range -30 to +85 deg C

##### Humidity

Operating Relative 35% to 85%

#### Compliance Certifications

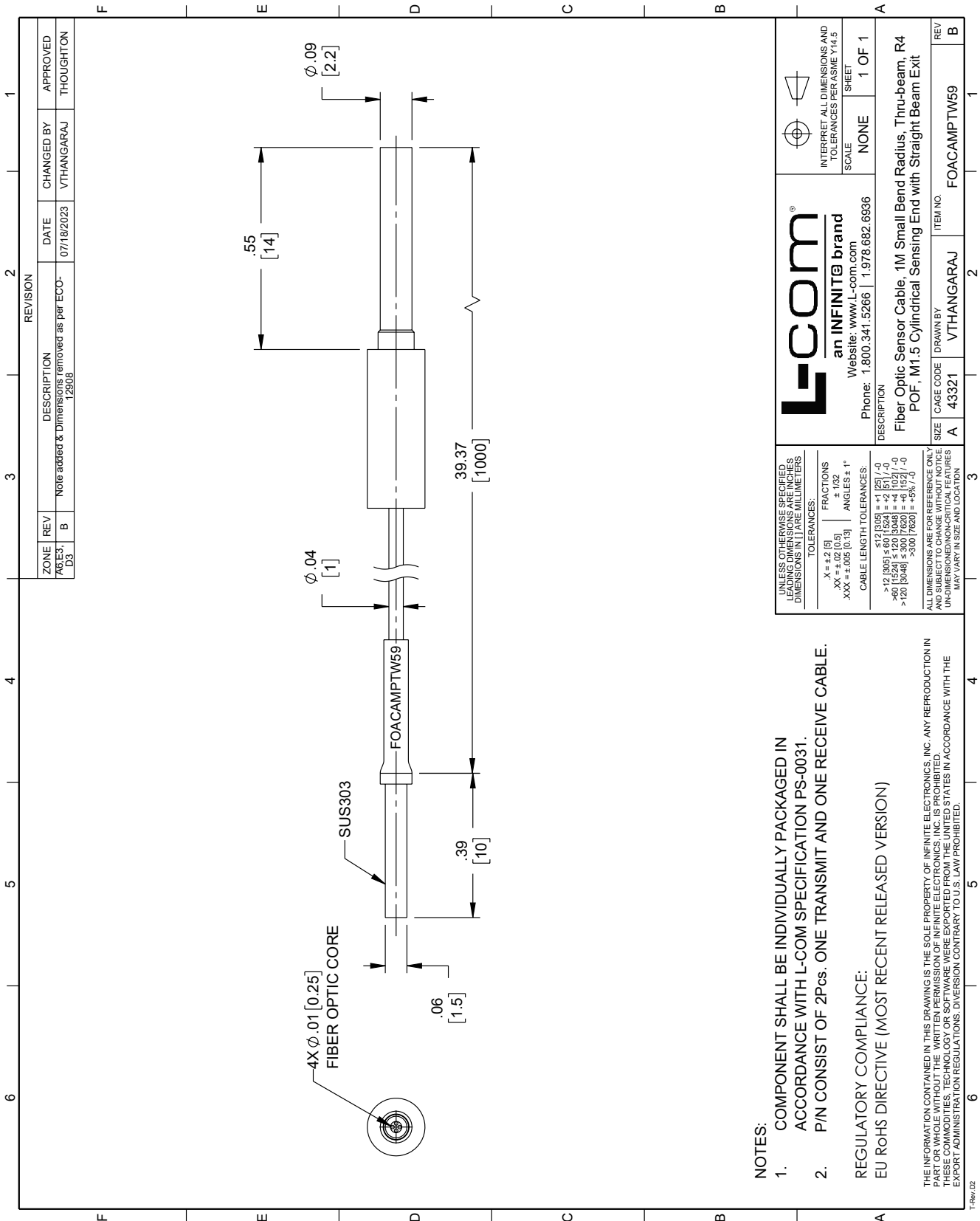
CE Compliance Yes

Fiber Optic Sensor Cable, 1M Small Bend Radius, Thru-beam, R4 POF, M1.5 Cylindrical Sensing End with Straight Beam Exit from L-com has same day shipment for domestic and International orders. Our portfolio includes coaxial cable assemblies, connectors, adapters and custom products as well as lightning and surge protectors, NEMA rated enclosures, and an RF product line which includes antennas, amplifiers, passive, and active components.

The information contained within this document is accurate to the best of our knowledge and representative of the part described herein. It may be necessary to make modifications to the part and/or the documentation of the part in order to impliment improvements. L-com reserves the right to make such changes as required. Unless otherwise stated, all specifications are nominal. L-com does not make any representation or warranty regarding the suitability of the part described herein for any particular purpose, and L-com does not assume liability arising out of the use of any part or document.

Fiber Optic Sensor Cable, 1M Small Bend Radius, Thru-beam, R4 POF, M1.5 Cylindrical Sensing End with Straight Beam Exit

L-com CAD Drawing



ZONE REV		REVISION		CHANGED BY		APPROVED	
70613	B	Note added & Dimensions removed as per ECO-12808		VTHANGARAJ		THOUGHTON	
D3				DATE		07/18/2023	

**NOTES:**

1. COMPONENT SHALL BE INDIVIDUALLY PACKAGED IN ACCORDANCE WITH L-COM SPECIFICATION PS-0031.
2. P/N CONSIST OF 2PCS. ONE TRANSMIT AND ONE RECEIVE CABLE.

REGULATORY COMPLIANCE:  
EU ROHS DIRECTIVE (MOST RECENT RELEASED VERSION)

UNLESS OTHERWISE SPECIFIED, LEADING DIMENSIONS ARE IN INCHES. DIMENSIONS IN PARENTHESES ARE IN MILLIMETERS.

TOLERANCES:  
 .X = ±.2 [5]      FRACTIONS ± .1/32  
 .XX = ±.02 [0.5]      ANGLES ± 1°  
 .XXX = ±.005 [0.13]

CABLE LENGTH TOLERANCES:  
 ≤12 [305] = +1 [25] / -0  
 >12 [305] ≤ 60 [1524] = ±2 [51] / -0  
 >60 [1524] ≤ 300 [7620] = +6 [152] / -0  
 >120 [3048] ≤ 300 [7620] = +6 [152] / -0  
 >300 [7620] = +5% / -0

ALL DIMENSIONS ARE FOR REFERENCE ONLY. PART OR WHOLE WITHOUT THE WRITTEN PERMISSION OF INFINITE ELECTRONICS, INC. IS PROHIBITED. THESE COMMODITIES, TECHNOLOGY OR SOFTWARE WERE EXPORTED FROM THE UNITED STATES IN ACCORDANCE WITH THE EXPORT ADMINISTRATION REGULATIONS. DIVERSION CONTRARY TO U.S. LAW PROHIBITED.

INTERPRET ALL DIMENSIONS AND TOLERANCES PER ASME Y14.5

SCALE NONE

SHEET 1 OF 1

**L-com**  
an INFINITE brand  
Website: www.L-com.com  
Phone: 1.800.341.5266 | 1.978.682.6936

DESCRIPTION  
Fiber Optic Sensor Cable, 1M Small Bend Radius, Thru-beam, R4 POF, M1.5 Cylindrical Sensing End with Straight Beam Exit

REV	ITEM NO.	FOACAMPTW59
B	43321	VTHANGARAJ
A	43321	VTHANGARAJ