

Fiber Transmitter 1310nm Directly Modulated, AC Power,
1 SC/APC connector 1.2GHz AGC, 10 mW



FOTX31DMAC1SC-10

Features

- Direct Modulated Transmitter
- 1310nm 1.2GHz band
- Supports 8-14dBm optical power
- Wide AGC
- AC Power
- 1RU rack mount

Applications

- CATV HFC network
- Analog transmission video
- HDTV digital television
- Long distance video transport (up to 100km)

Description

The L-com FOTX31DMAC1SC-10 series is a 1310nm Fiber Transmitter 1310nm Directly Modulated, AC Power, 1 SC/APC connector 1.2GHz AGC with 10 dBm optical power. The FOTX31DMAC1SC-10 is a high quality, low cost, optical broadcast transmitter used to send RF analog and digital content over long distant optical trunk and HFC networks. The FOTX31DMAC1SC-10 1RU rack mount transmitter supports a 78 NTSC channel loading and 44 DOCSIS3/HDTV digital channels in a single low-cost package. The FOTX31DMAC1SC-10 optical power. This high quality, low cost, optical broadcast transmitter is used to send RF analog and digital content over long distant optical trunk and HFC networks. This 1RU rack mount transmitter supports a 78 NTSC channel loading and 44 DOCSIS3/HDTV digital channels in a single low-cost package. The DXT transmitter supports 8-14dBm optical power, a wide AGC range, 47 to 1000 MHz frequency response and SNMP remote management to allow it to be deployed in a wide variety of network topologies carrying both analog and digital content. The FOTX31DMAC1SC-10 is one of thousands of fiber optic connectivity products available from L-com, in-stock and ready to ship. Contact our knowledgeable technical support and sales staff for your answers on fiber optic connectivity or other L-com products.

Configuration

Modulation Mode	Directly modulated
Optical Output ports	1

Filter Specifications

Description	Minimum	Typical	Maximum	Units
Optical Wavelength		1,310		nm
Optical Output Power	10		14	dBm
CSO		-63		dBm
CTB		-70		dBm
RF Frequency Range	45		1000	MHz
RF Input Level Variation		10		dBuV
Flatness		0.75		dB
Input Return Loss	16		75	dB
AC Power	90		265	Volts
DC Power	-36		60	Volts
Power Consumption		25		Watts

Dimensions

Click the following link (or enter part number in "SEARCH" on website) to obtain additional part information including price, inventory and certifications:
[Fiber Transmitter 1310nm Directly Modulated, AC Power, 1 SC/APC connector 1.2GHz AGC, 10 mW FOTX31DMAC1SC-10](#)

Fiber Transmitter 1310nm Directly Modulated, AC Power,
1 SC/APC connector 1.2GHz AGC, 10 mW



FOTX31DMAC1SC-10

Optical Connector	1 SC/APC on rear panel
RF Connector	Female

Environmental Specifications

Temperature

Operating Range	0 to +50 deg C
Storage Range	-40 to +80 deg C
Humidity	5% to 85% (non condensing)

Compliance Certifications (see [product page](#) for current document)

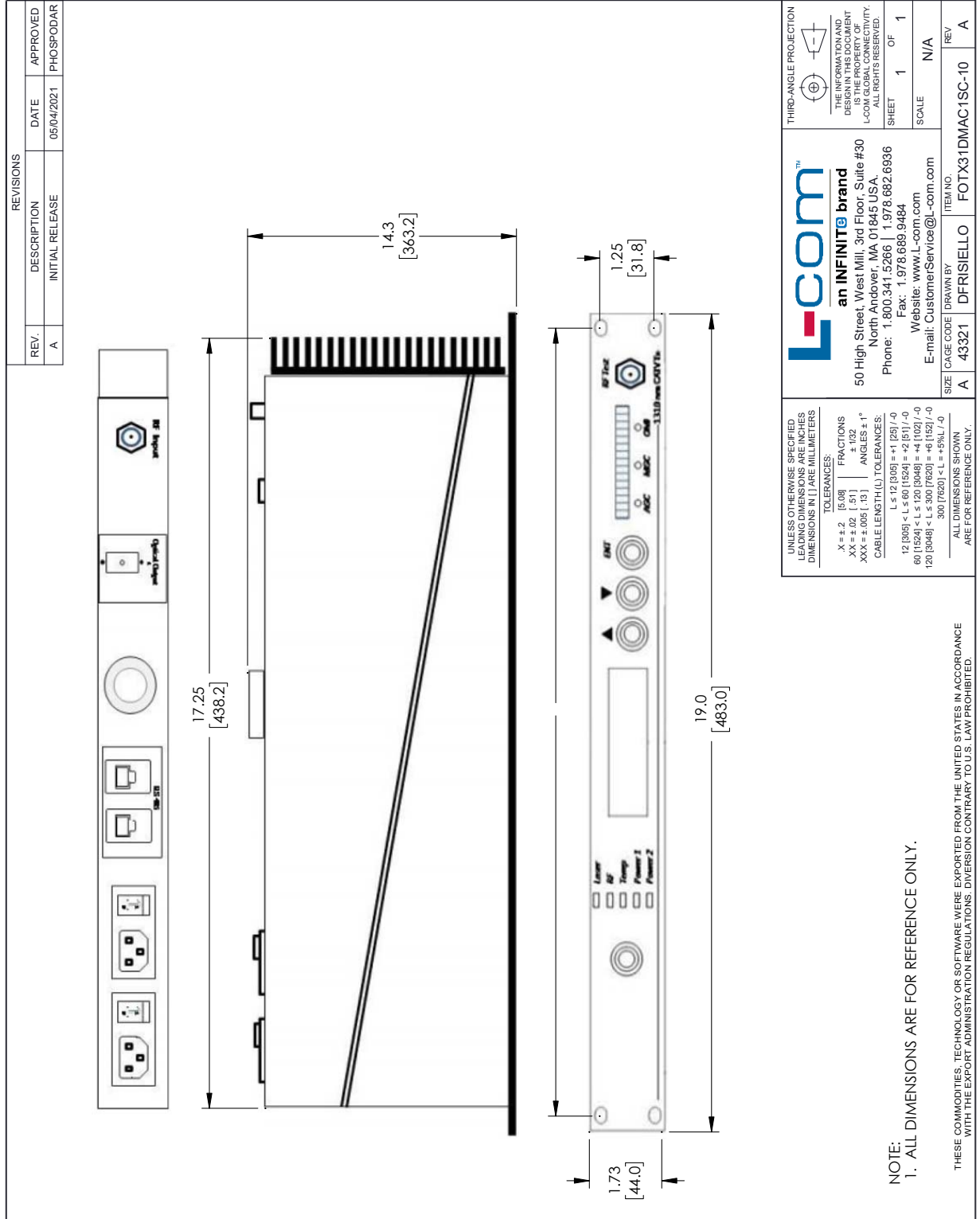
Plotted and Other Data

Notes:

Fiber Transmitter 1310nm Directly Modulated, AC Power, 1 SC/APC connector 1.2GHz AGC, 10 mW from L-com has same day shipment for domestic and International orders. Our portfolio includes coaxial cable assemblies, connectors, adapters and custom products as well as lightning and surge protectors, NEMA rated enclosures, and an RF product line which includes antennas, amplifiers, passive, and active components.

The information contained within this document is accurate to the best of our knowledge and representative of the part described herein. It may be necessary to make modifications to the part and/or the documentation of the part in order to impliment improvements. L-com reserves the right to make such changes as required. Unless otherwise stated, all specifications are nominal. L-com does not make any representation or warranty regarding the suitability of the part described herein for any particular purpose, and L-com does not assume liability arising out of the use of any part or document.

L-com CAD Drawing



UNLESS OTHERWISE SPECIFIED LEADING DIMENSIONS ARE INCHES DIMENSIONS IN [] ARE MILLIMETERS.

TOLERANCES:
 .X = ±.2 [5.08] FRACTIONS ±.132
 .XX = ±.02 [.51] ANGLES ± 1°
 .XXX = ±.005 [.13] CABLE LENGTH (L) TOLERANCES:
 L ≤ 12 [305] = ±.1 [25] / -0
 12 [305] < L ≤ 60 [1524] = ±.2 [51] / -0
 60 [1524] < L ≤ 120 [3048] = ±.4 [102] / -0
 120 [3048] < L ≤ 300 [7620] = ±.6 [152] / -0
 300 [7620] < L = ±.6% L / -0

ALL DIMENSIONS SHOWN ARE FOR REFERENCE ONLY.

THIRD-ANGLE PROJECTION

THE INFORMATION AND DESIGN CONTAINED HEREIN IS THE PROPERTY OF L-COM GLOBAL CONNECTIVITY. ALL RIGHTS RESERVED.

SHEET 1 OF 1
SCALE N/A

L-com™
an INFINITE brand
 50 High Street, West Mill, 3rd Floor, Suite #30
 North Andover, MA 01845 USA
 Phone: 1.800.341.5266 | 1.978.682.6936
 Fax: 1.978.689.9484
 Website: www.L-com.com
 E-mail: CustomerService@L-com.com

ITEM NO. FOTX31DMAC1SC-10
 DRAWN BY DFRISIELLO
 SIZE A
 CAGE CODE 43321