

Fiber Optic Transceiver, SFP, CWDM, ZX SMF  
80KM, 1000Base DDM, Ciena Compliant



## FXC-SFP-CxxZX-1G-CAN

### Features

- Operating Data Rate up to 1.25 Gbps
- Distance Range 80KM
- Pluggable SFP Duplex LC Connectors
- Standard and Industrial Operating Temperature
- Compliant with Ciena Specification

### Applications

- Telecom ( Service Providers)
- Datacom
- Enterprise Networks
- Government
- Fiber to the home / business

### Description

The L-com FXC-SFP-CxxZX-1G-CAN series are SFP transceivers, supporting 1G Ethernet data rates. The SFP CWDM series transceivers have CWDM transmitters, with operating wavelengths between 1470 nm to 1610 nm. The L-com FXC-SFP-CxxZX-1G-CAN series support 80KM distance and are compliant with Ciena system level specifications. The L-com FXC-SFP-CxxZX-1G-CAN series feature digital diagnostics for performance monitoring of the transceivers. The L-com FXC-SFP-CxxZX-1G-CAN series are one of thousands of fiber optic connectivity products available from L-com's in-stock inventory and ready to ship. Contact our knowledgeable technical support and sales staff with your questions on fiber optic connectivity or other L-com products.

### Configuration

Data Rate	1.25 Gbps
Form Factor	SFP
Connector	LC
Connector Mode	Duplex
Mode	Single Mode
Distance	80 km
Mfg Platform Compatibility	Ciena

### Electrical Specifications

Description	Minimum	Typical	Maximum	Units
Power Supply Voltage	3.15	3.3	3.45	V
Power Supply Current			300	mA
Module Total Power			1	W

### Optical Specifications

Description	Minimum	Typical	Maximum	Units
TX Center Wavelength*	$\lambda_c - 6$	$\lambda_c$	$\lambda_c + 7.5$	nm
TX Data Rate	1.06		1.25	Gbps
TX Average Output Power	0		5	dBm
TX Extinction Ratio	8.2			dB

Click the following link (or enter part number in "SEARCH" on website) to obtain additional part information including price, inventory and certifications:  
[FXC-SFP-CxxZX-1G-CAN](#)

Fiber Optic Transceiver, SFP, CWDM, ZX SMF  
80KM, 1000Base DDM, Ciena Compliant



**FXC-SFP-CxxZX-1G-CAN**

RX Center Wavelength	1260	1620	nm
RX Receiver Sensitivity		-24	dBm
RX Receiver Overload	-3		dBm

\*See table below

**Wavelength Channel No.**

ITU Channel No.	Wavelength	Latch color by wavelength
(xx)	nm	
47	1471	Grey
49	1491	Purple
51	1511	Dark Blue
53	1531	Green
55	1551	Yellow
57	1571	Orange
59	1591	Red
61	1611	Brown

**Environmental Specifications**

**Temperature**

Operating Range

0 to +70 deg C

Storage Range

-40 to +85 deg C

Fiber Optic Transceiver, SFP, CWDM, ZX SMF  
80KM, 1000Base DDM, Ciena Compliant



**FXC-SFP-CxxZX-1G-CAN**

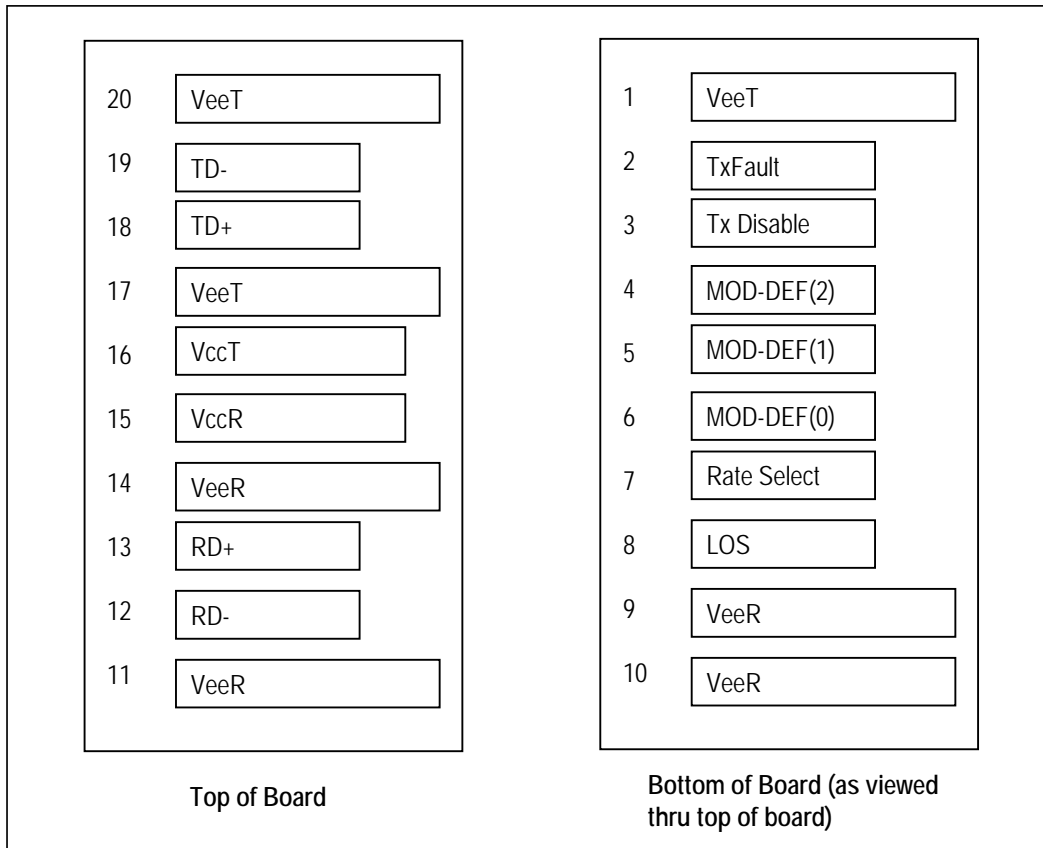
Notes:

**Compliance Certifications** (see [product page](#) for current document)

**Plotted and Other Data**

Notes:

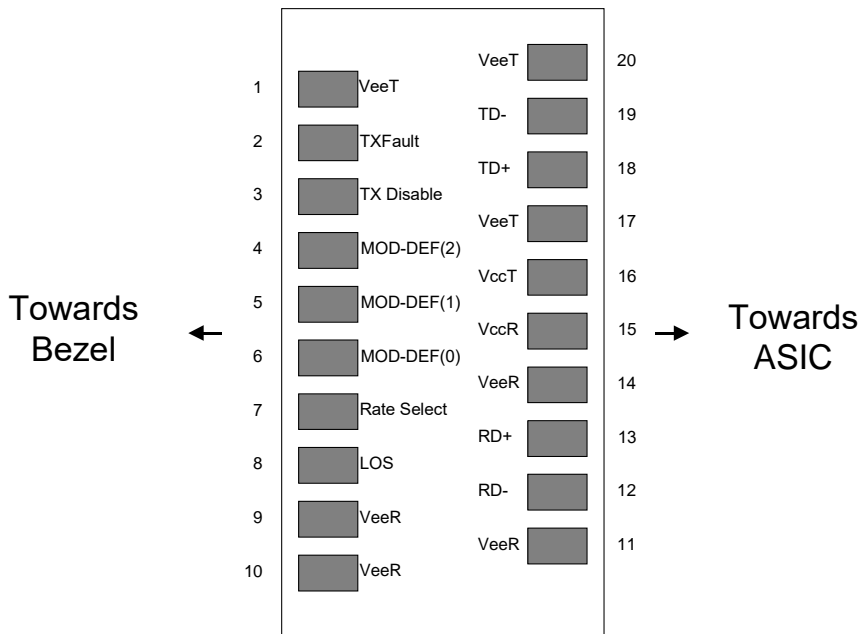
**Small Form-factor Pluggable (SFP) Transceiver MultiSource Agreement (MSA)**



Fiber Optic Transceiver, SFP, CWDM, ZX SMF  
80KM, 1000Base DDM, Ciena Compliant



**FXC-SFP-CxxZX-1G-CAN**

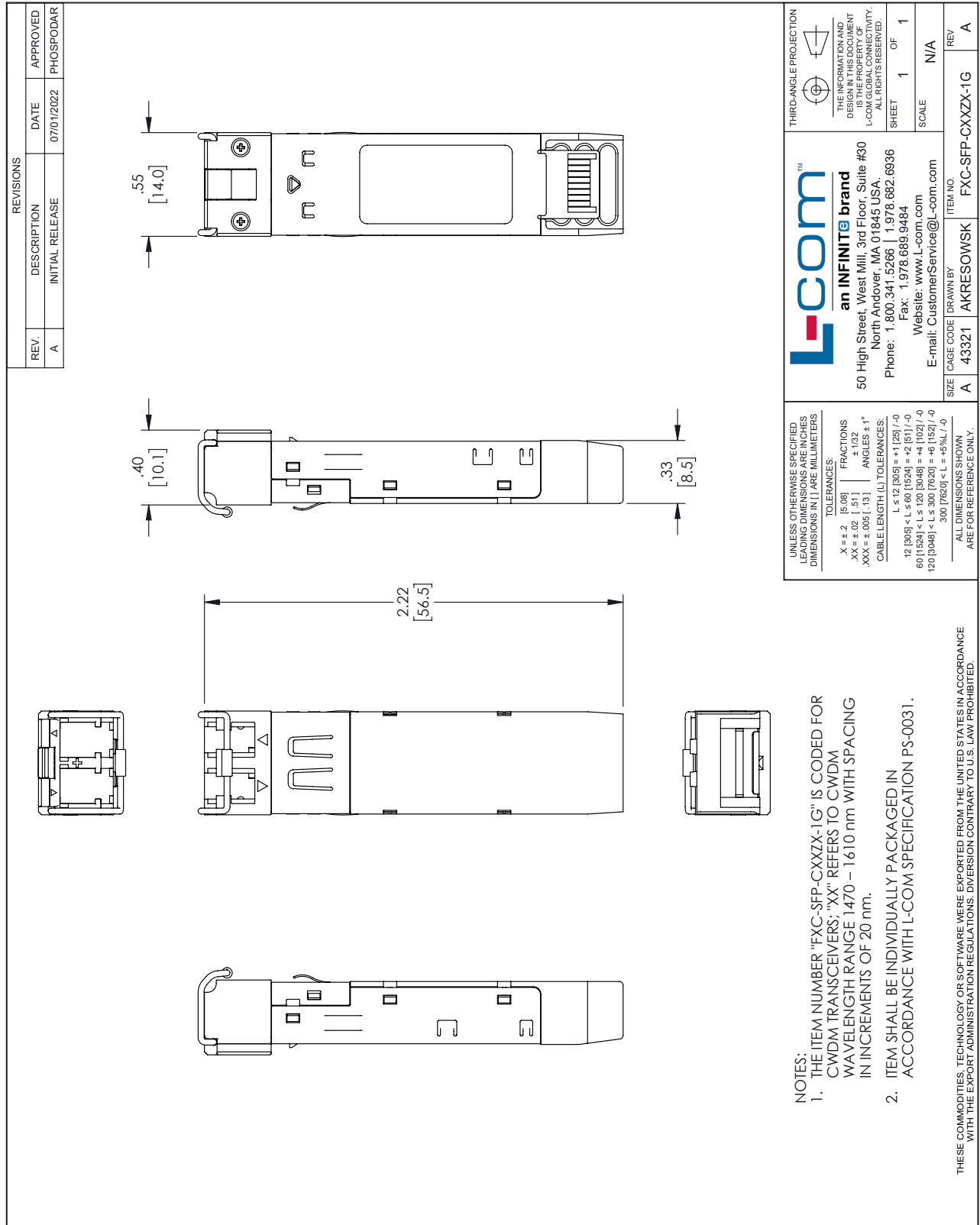


**Figure 1. Diagram of Host Board Connector Block Pin Numbers and Names**

Fiber Optic Transceiver, SFP, CWDM, ZX SMF 80KM, 1000Base DDM, Ciena Compliant from L-com has same day shipment for domestic and International orders. Our portfolio includes coaxial cable assemblies, connectors, adapters and custom products as well as lightning and surge protectors, NEMA rated enclosures, and an RF product line which includes antennas, amplifiers, passive, and active components.

The information contained within this document is accurate to the best of our knowledge and representative of the part described herein. It may be necessary to make modifications to the part and/or the documentation of the part in order to impliment improvements. L-com reserves the right to make such changes as required. Unless otherwise stated, all specifications are nominal. L-com does not make any representation or warranty regarding the suitability of the part described herein for any particular purpose, and L-com does not assume liability arising out of the use of any part or document.

L-com CAD Drawing



**NOTES:**

- THE ITEM NUMBER "FXC-SFP-CXXZX-1G" IS CODED FOR CWDM TRANSCEIVERS. "XX" REFERS TO CWDM WAVELENGTH RANGE 1470 – 1610 nm WITH SPACING IN INCREMENTS OF 20 nm.
- ITEM SHALL BE INDIVIDUALLY PACKAGED IN ACCORDANCE WITH L-COM SPECIFICATION PS-0031.

THESE COMMODITIES, TECHNOLOGY OR SOFTWARE WERE EXPORTED FROM THE UNITED STATES IN ACCORDANCE WITH THE EXPORT ADMINISTRATION REGULATIONS. DIVERSION CONTRARY TO U.S. LAW PROHIBITED.

T-Rev.D