

Fiber Optic Transceiver, SFP, CWDM, EZX SMF  
120KM, 1000Base DDM, ADVA Compliant



## FXC-SFP-CxxEZX1G-ADV

### Features

- Operating Data Rate up to 1.25 Gbps
- Distance Range 120KM
- Pluggable SFP- Duplex LC Connectors
- Standard and Industrial Operating Temperature
- Compliant with Adva Specification

### Applications

- Telecom ( Service Providers)
- Datacom
- Enterprise Networks
- Government
- Fiber to the home / business

### Description

The L-com FXC-SFP-CxxEZX1G-ADV series are SFP transceivers, supporting 1G Ethernet data rates. The SFP CWDM series transceivers have CWDM transmitters, with operating wavelengths between 1470 nm to 1610 nm. The L-com FXC-SFP-CxxEZX1G-ADV series support 120KM distance and are compliant with Adva system level specifications. The L-com FXC-SFP-CxxEZX1G-ADV series feature digital diagnostics for performance monitoring of the transceivers. The L-com FXC-SFP-CxxEZX1G-ADV series are one of thousands of fiber optic connectivity products available from L-com's in-stock inventory and ready to ship. Contact our knowledgeable technical support and sales staff with your questions on fiber optic connectivity or other L-com products.

### Configuration

Data Rate	1.25 Gbps
Form Factor	SFP
Connector	LC
Connector Mode	Duplex
Mode	Single Mode
Distance	120 km
Mfg Platform Compatibility	Adva

### Electrical Specifications

Description	Minimum	Typical	Maximum	Units
Power Supply Voltage	3.15	3.3	3.45	V
Power Supply Current			300	mA
Module Total Power			1	W

### Optical Specifications

Description	Minimum	Typical	Maximum	Units
TX Center Wavelength*	$\lambda_c - 6$	$\lambda_c$	$\lambda_c + 7.5$	nm
TX Data Rate	1.06		1.25	Gbps
TX Average Output Power	0		5	dBm
TX Extinction Ratio	8.2			dB

Click the following link (or enter part number in "SEARCH" on website) to obtain additional part information including price, inventory and certifications:  
[FXC-SFP-CxxEZX1G-ADV](#)

Fiber Optic Transceiver, SFP, CWDM, EZX SMF  
120KM, 1000Base DDM, ADVA Compliant



**FXC-SFP-CxxEZX1G-ADV**

RX Center Wavelength	1260	1620	nm
RX Receiver Sensitivity		-34	dBm
RX Receiver Overload	-10		dBm

\*See table below

**Wavelength Channel No.**

ITU Channel No.	Wavelength	Latch color by wavelength
(xx)	nm	
47	1471	Grey
49	1491	Purple
51	1511	Dark Blue
53	1531	Green
55	1551	Yellow
57	1571	Orange
59	1591	Red
61	1611	Brown

**Environmental Specifications**

**Temperature**

Operating Range

0 to +70 deg C

Storage Range

-40 to +85 deg C

Fiber Optic Transceiver, SFP, CWDM, EZX SMF  
120KM, 1000Base DDM, ADVA Compliant



**FXC-SFP-CxxEZX1G-ADV**

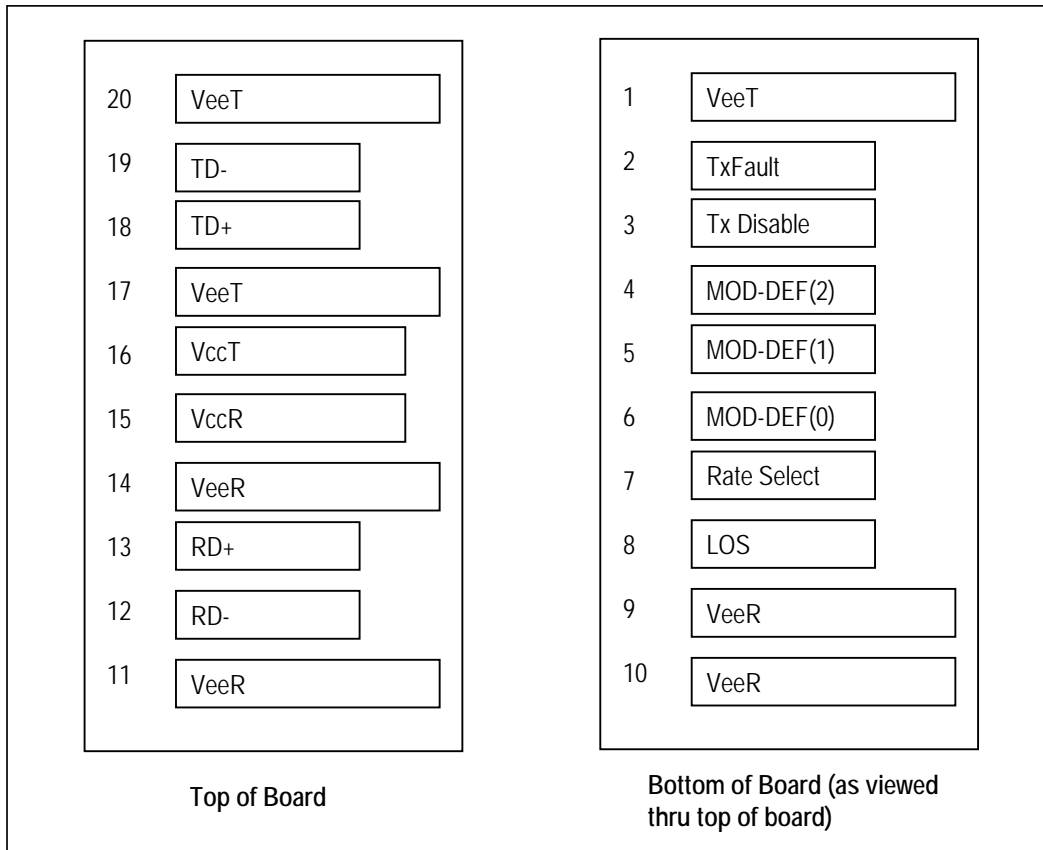
Notes:

**Compliance Certifications** (see [product page](#) for current document)

**Plotted and Other Data**

Notes:

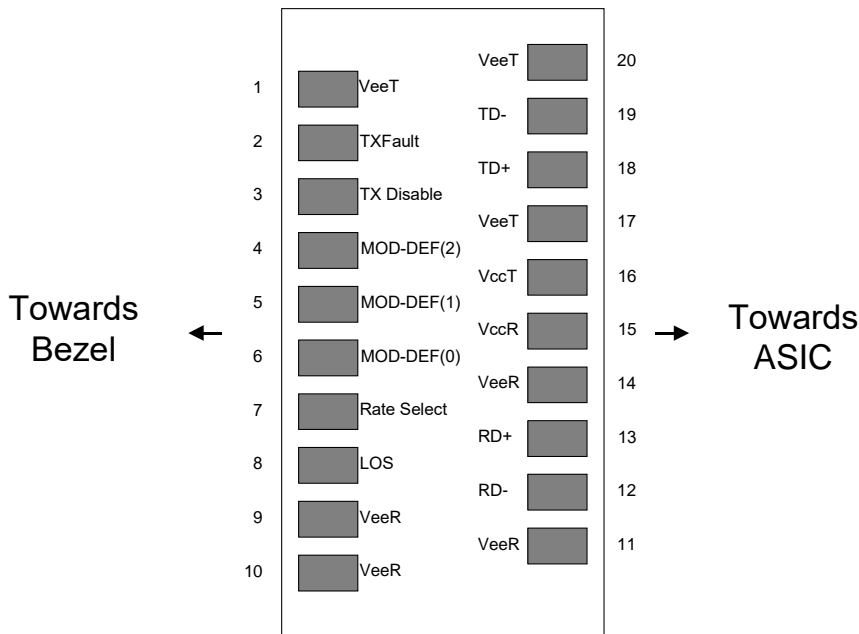
**Small Form-factor Pluggable (SFP) Transceiver MultiSource Agreement (MSA)**



Fiber Optic Transceiver, SFP, CWDM, EZX SMF  
120KM, 1000Base DDM, ADVA Compliant



**FXC-SFP-CxxEZX1G-ADV**

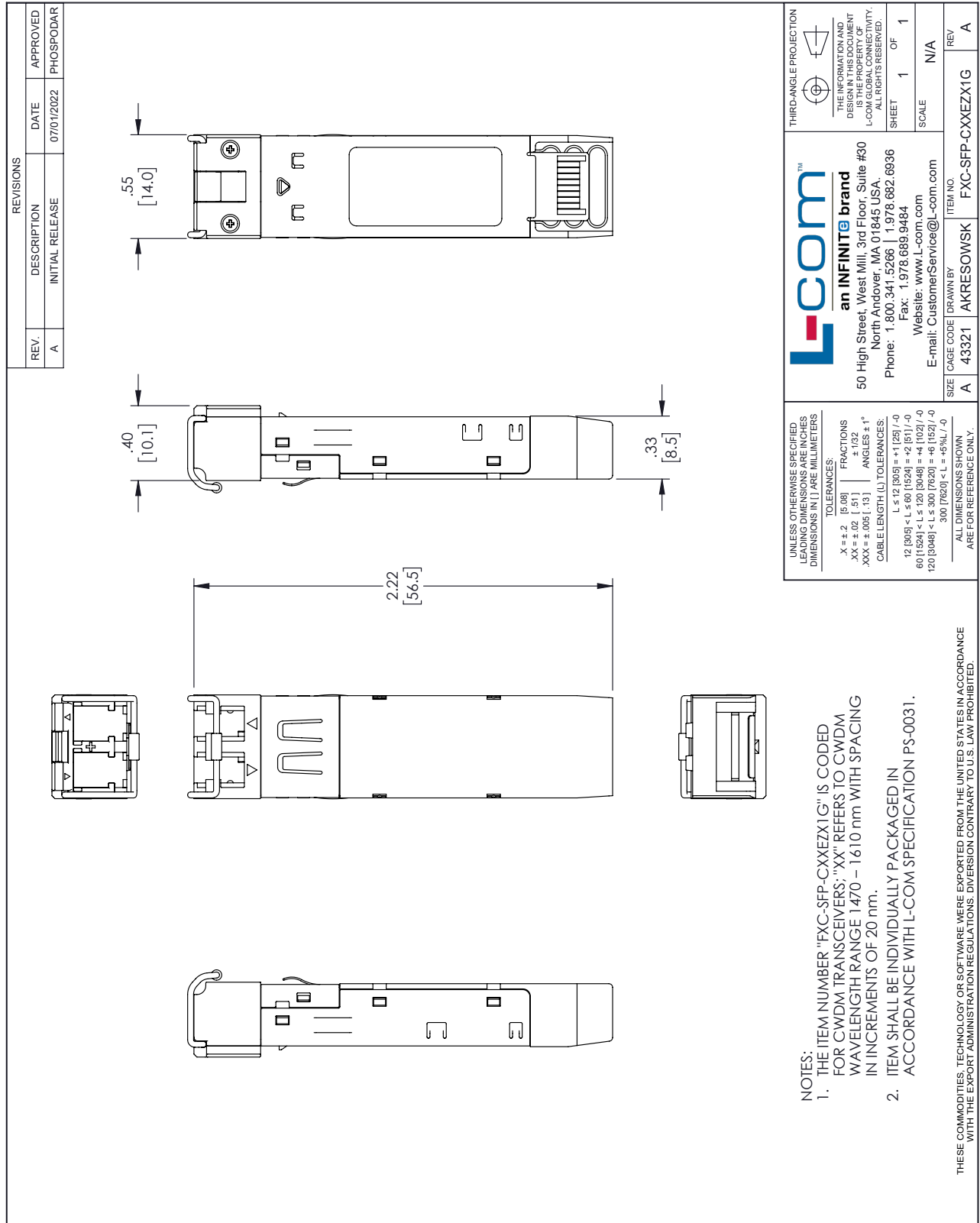


**Figure 1. Diagram of Host Board Connector Block Pin Numbers and Names**

Fiber Optic Transceiver, SFP, CWDM, EZX SMF 120KM, 1000Base DDM, ADVA Compliant from L-com has same day shipment for domestic and International orders. Our portfolio includes coaxial cable assemblies, connectors, adapters and custom products as well as lightning and surge protectors, NEMA rated enclosures, and an RF product line which includes antennas, amplifiers, passive, and active components.

The information contained within this document is accurate to the best of our knowledge and representative of the part described herein. It may be necessary to make modifications to the part and/or the documentation of the part in order to impliment improvements. L-com reserves the right to make such changes as required. Unless otherwise stated, all specifications are nominal. L-com does not make any representation or warranty regarding the suitability of the part described herein for any particular purpose, and L-com does not assume liability arising out of the use of any part or document.

L-com CAD Drawing



UNLESS OTHERWISE SPECIFIED LEADING DIMENSIONS ARE IN INCHES DIMENSIONS IN [ ] ARE MILLIMETERS

**tolerances:**

.X = ±.2 [5.08]	FRACTIONS ± 1/32
.XX = ±.02 [ .51]	ANGLES ± 1°
.XXX = ±.005 [ .13]	

**CABLE LENGTH (L) TOLERANCES:**

L ≤ 12 [305]	± 1/25 / -0
12 [305] < L ≤ 60 [1524]	± 1/16 / -0
60 [1524] < L ≤ 120 [3048]	± 1/8 / -0
120 [3048] < L ≤ 300 [7620]	± 1/4 / -0
300 [7620] < L	± 5% / -0

ALL DIMENSIONS SHOWN ARE FOR REFERENCE ONLY.

**L-com™**  
**an INFINITE brand**  
 50 High Street, West Mill, 3rd Floor, Suite #30  
 North Andover, MA 01845 USA.  
 Phone: 1.800.341.5266 | 1.978.682.6936  
 Fax: 1.978.689.9484  
 Website: www.L-com.com  
 E-mail: CustomerService@L-com.com

THIRD-ANGLE PROJECTION

THE INFORMATION AND DRAWING REPRESENTATION IS THE PROPERTY OF L-COM GLOBAL CONNECTIVITY. ALL RIGHTS RESERVED.

SHEET 1 OF 1

SCALE N/A

SIZE	CAGE CODE	DRAWN BY	ITEM NO.
A	43321	AKRESOWSK	FXC-SFP-CXXEZX1G
			REV A