

Fiber Optic Transceiver, SFP, CWDM, EZX SMF
120KM, 1000Base DDM, Ciena Compliant



FXC-SFP-CxxEZX1G-CAN

Features

- Operating Data Rate up to 1.25 Gbps
- Distance Range 120KM
- Pluggable SFP- Duplex LC Connectors
- Standard and Industrial Operating Temperature
- Compliant with Ciena Specification

Applications

- Telecom (Service Providers)
- Datacom
- Enterprise Networks
- Government
- Fiber to the home / business

Description

The L-com FXC-SFP-CxxEZX1G-CAN series are SFP transceivers, supporting 1G Ethernet data rates. The SFP CWDM series transceivers have CWDM transmitters, with operating wavelengths between 1470 nm to 1610 nm. The L-com FXC-SFP-CxxEZX1G-CAN series support 120KM distance and are compliant with Ciena system level specifications. The L-com FXC-SFP-CxxEZX1G-CAN series feature digital diagnostics for performance monitoring of the transceivers. The L-com FXC-SFP-CxxEZX1G-CAN series are one of thousands of fiber optic connectivity products available from L-com's in-stock inventory and ready to ship. Contact our knowledgeable technical support and sales staff with your questions on fiber optic connectivity or other L-com products.

Configuration

| | |
|----------------------------|-------------|
| Data Rate | 1.25 Gbps |
| Form Factor | SFP |
| Connector | LC |
| Connector Mode | Duplex |
| Mode | Single Mode |
| Distance | 120 km |
| Mfg Platform Compatibility | Ciena |

Electrical Specifications

| Description | Minimum | Typical | Maximum | Units |
|----------------------|---------|---------|---------|-------|
| Power Supply Voltage | 3.15 | 3.3 | 3.45 | V |
| Power Supply Current | | | 300 | mA |
| Module Total Power | | | 1 | W |

Optical Specifications

| Description | Minimum | Typical | Maximum | Units |
|-------------------------|-----------------|-------------|-------------------|-------|
| TX Center Wavelength* | $\lambda_c - 6$ | λ_c | $\lambda_c + 7.5$ | nm |
| TX Data Rate | 1.06 | | 1.25 | Gbps |
| TX Average Output Power | 0 | | 5 | dBm |
| TX Extinction Ratio | 8.2 | | | dB |

Click the following link (or enter part number in "SEARCH" on website) to obtain additional part information including price, inventory and certifications:
[FXC-SFP-CxxEZX1G-CAN](#)

Fiber Optic Transceiver, SFP, CWDM, EZX SMF
120KM, 1000Base DDM, Ciena Compliant



FXC-SFP-CxxEZX1G-CAN

| | | | |
|-------------------------|------|------|-----|
| RX Center Wavelength | 1260 | 1620 | nm |
| RX Receiver Sensitivity | | -34 | dBm |
| RX Receiver Overload | -10 | | dBm |

*See table below

Wavelength Channel No.

| ITU Channel No. | Wavelength | Latch color by wavelength |
|-----------------|------------|---------------------------|
| (xx) | nm | |
| 47 | 1471 | Grey |
| 49 | 1491 | Purple |
| 51 | 1511 | Dark Blue |
| 53 | 1531 | Green |
| 55 | 1551 | Yellow |
| 57 | 1571 | Orange |
| 59 | 1591 | Red |
| 61 | 1611 | Brown |

Environmental Specifications

Temperature

Operating Range

0 to +70 deg C

Storage Range

-40 to +85 deg C

Fiber Optic Transceiver, SFP, CWDM, EZX SMF
120KM, 1000Base DDM, Ciena Compliant



FXC-SFP-CxxEZX1G-CAN

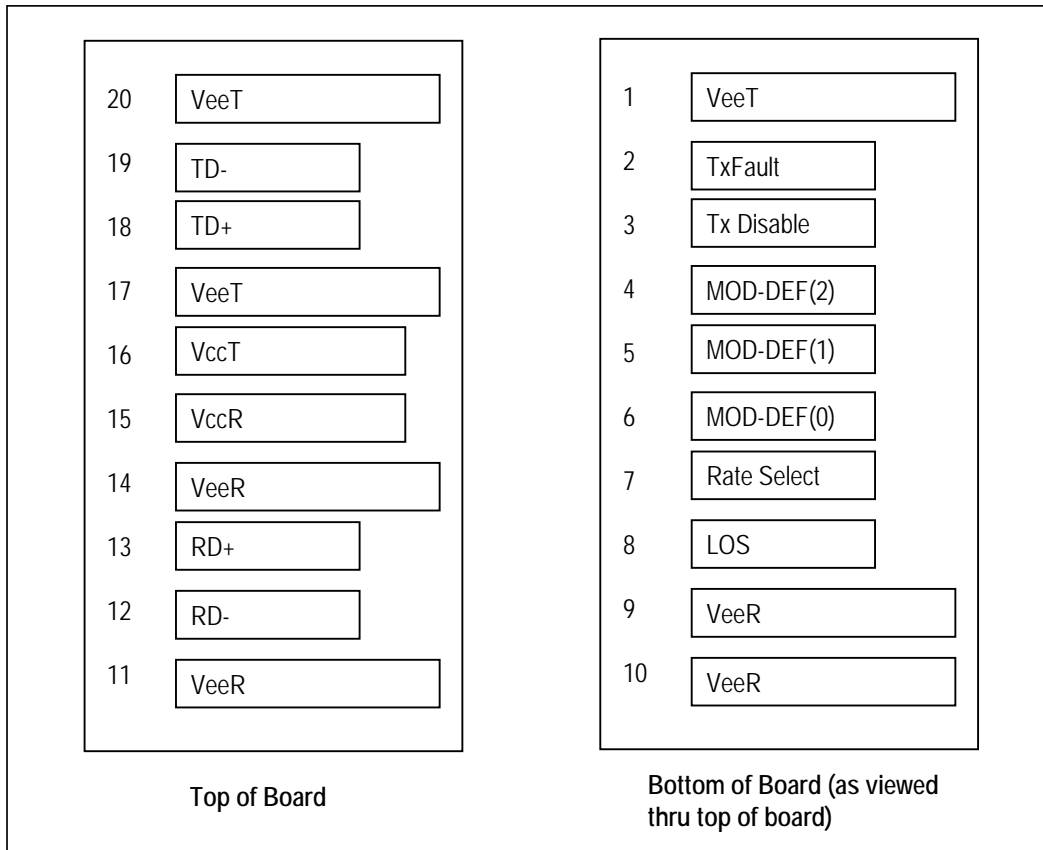
Notes:

Compliance Certifications (see [product page](#) for current document)

Plotted and Other Data

Notes:

Small Form-factor Pluggable (SFP) Transceiver MultiSource Agreement (MSA)



Fiber Optic Transceiver, SFP, CWDM, EZX SMF
120KM, 1000Base DDM, Ciena Compliant



FXC-SFP-CxxEZX1G-CAN

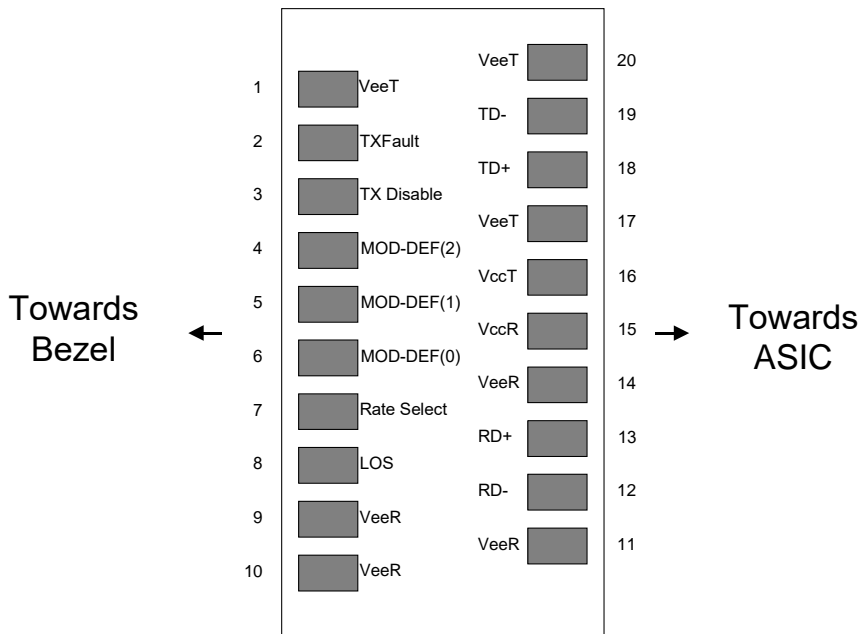
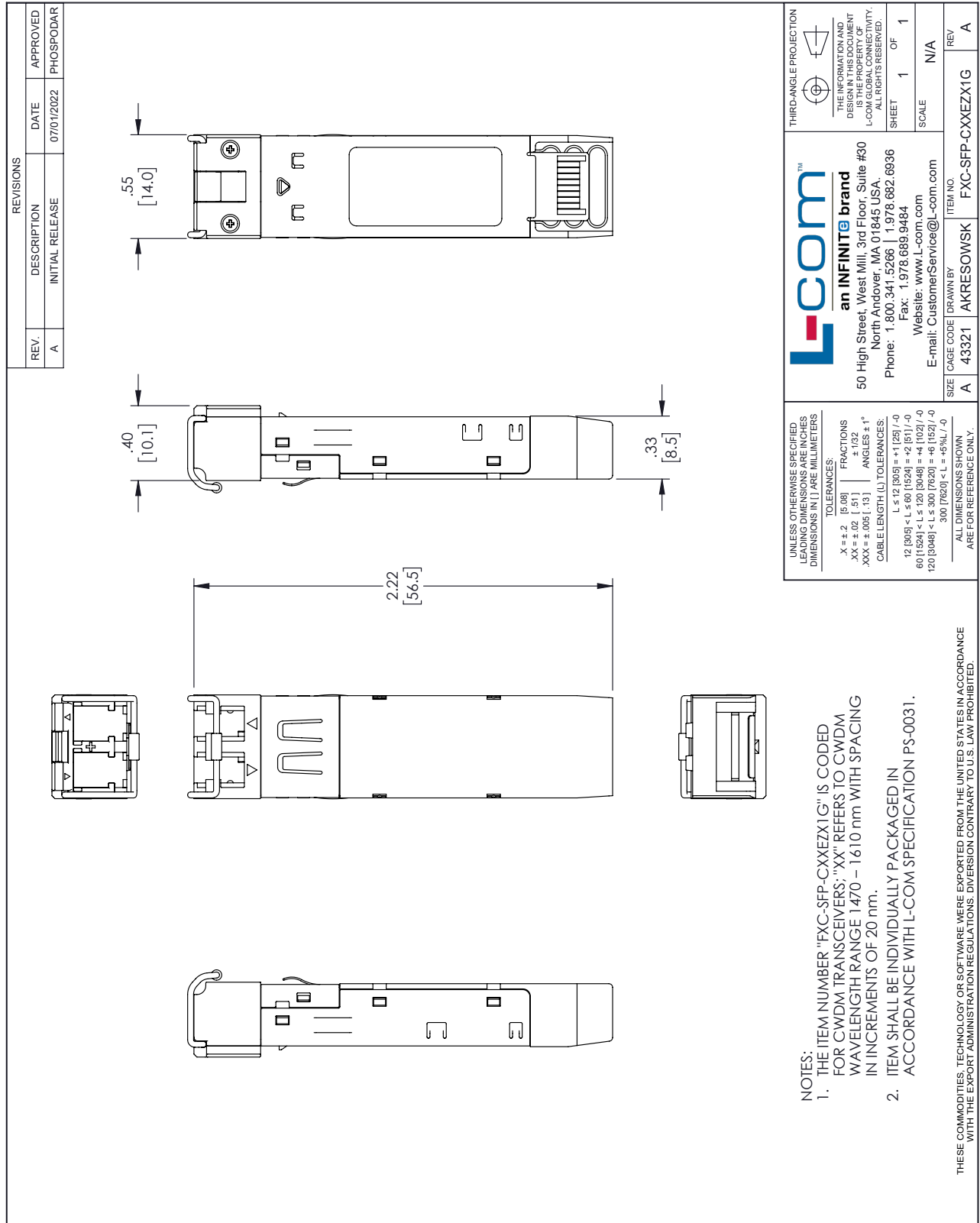


Figure 1. Diagram of Host Board Connector Block Pin Numbers and Names

Fiber Optic Transceiver, SFP, CWDM, EZX SMF 120KM, 1000Base DDM, Ciena Compliant from L-com has same day shipment for domestic and International orders. Our portfolio includes coaxial cable assemblies, connectors, adapters and custom products as well as lightning and surge protectors, NEMA rated enclosures, and an RF product line which includes antennas, amplifiers, passive, and active components.

The information contained within this document is accurate to the best of our knowledge and representative of the part described herein. It may be necessary to make modifications to the part and/or the documentation of the part in order to impliment improvements. L-com reserves the right to make such changes as required. Unless otherwise stated, all specifications are nominal. L-com does not make any representation or warranty regarding the suitability of the part described herein for any particular purpose, and L-com does not assume liability arising out of the use of any part or document.

L-com CAD Drawing



NOTES:
 1. THE ITEM NUMBER "FXC-SFP-CXXEZX1G" IS CODED FOR CWDM TRANSCEIVERS; "XX" REFERS TO CWDM WAVELENGTH RANGE 1470 – 1610 nm WITH SPACING IN INCREMENTS OF 20 nm.
 2. ITEM SHALL BE INDIVIDUALLY PACKAGED IN ACCORDANCE WITH L-COM SPECIFICATION PS-0031.

THESE COMMODITIES, TECHNOLOGY OR SOFTWARE WERE EXPORTED FROM THE UNITED STATES IN ACCORDANCE WITH THE EXPORT ADMINISTRATION REGULATIONS. DIVERSION CONTRARY TO U.S. LAW PROHIBITED.

T-Rev.D