

Fiber Optic Transceiver, SFP, RJ-45, TM Copper 100m, AutoNeg 10/100/1000M, SGMII, Wirebale, Adva



FXC-SFP-TXM-1GWB-ADV

Features

- Operating Data Rate up to 1.25 Gbps
- Distance Range 100M
- Single 3.3V Power Supply and TTL Logic Interface
- Pluggable SFP Duplex LC Connector
- Standard and Industrial Operating Temperature
- Compliant with Adva SFP Specification

Applications

- Telecom (Service Provider)
- Datacom
- Enterprise Networks
- Government
- Fiber to the home/business

Description

The L-com FXC-SFP-TXM-1GWB-ADV is an SFP form-factor transceiver, supporting 1G Ethernet rates. The L-com FXC-SFP-TXM-1GWB-ADV supports 100M distance and it is Adva compliant transceiver. The L-com FXC-SFP-TXM-1GWB-ADV features digital diagnostics for performance monitoring of the transceiver. The L-com FXC-SFP-TXM-1GWB-ADV is one of thousands of fiber optic connectivity products available from L-com in-stock and ready to ship. Contact our knowledgeable technical support and sales staff for your answers on fiber optic connectivity or other L-com products.

Configuration

| | |
|----------------------------|-----------|
| Data Rate | 1 Gbps |
| Form Factor | SFP |
| Connector | RJ45/RJ48 |
| Distance | 0.1 km |
| Mfg Platform Compatibility | Adva |

Electrical Specifications

| Description | Minimum | Typical | Maximum | Units |
|--------------------------|---------|---------|---------|-------|
| Wattage | | | 1.04 | W |
| Power Supply Voltage Vcc | 3.15 | 3.3 | 3.45 | V |
| Power Supply Current Icc | | | 300 | mA |

Environmental Specifications

Notes:

Compliance Certifications (see [product page](#) for current document)

Plotted and Other Data

Notes:

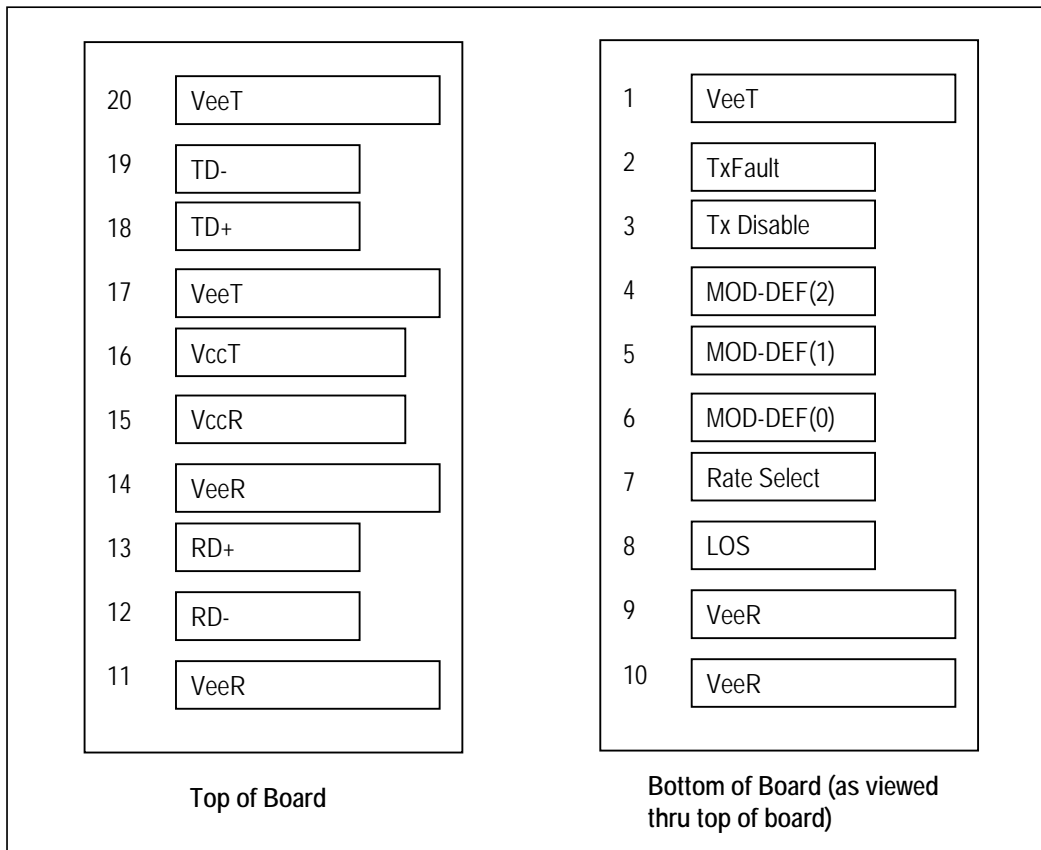
Click the following link (or enter part number in "SEARCH" on website) to obtain additional part information including price, inventory and certifications:
[Fiber Optic Transceiver, SFP, RJ-45, TM Copper 100m, AutoNeg 10/100/1000M, SGMII, Wirebale, Adva FXC-SFP-TXM-1GWB-ADV](#)

Fiber Optic Transceiver, SFP, RJ-45, TM Copper 100m, AutoNeg 10/100/1000M, SGMII, Wirebale, Adva



FXC-SFP-TXM-1GWB-ADV

Small Form-factor Pluggable (SFP) Transceiver MultiSource Agreement (MSA)



Fiber Optic Transceiver, SFP, RJ-45, TM Copper 100m, AutoNeg 10/100/1000M, SGMII, Wirebale, Adva



FXC-SFP-TXM-1GWB-ADV

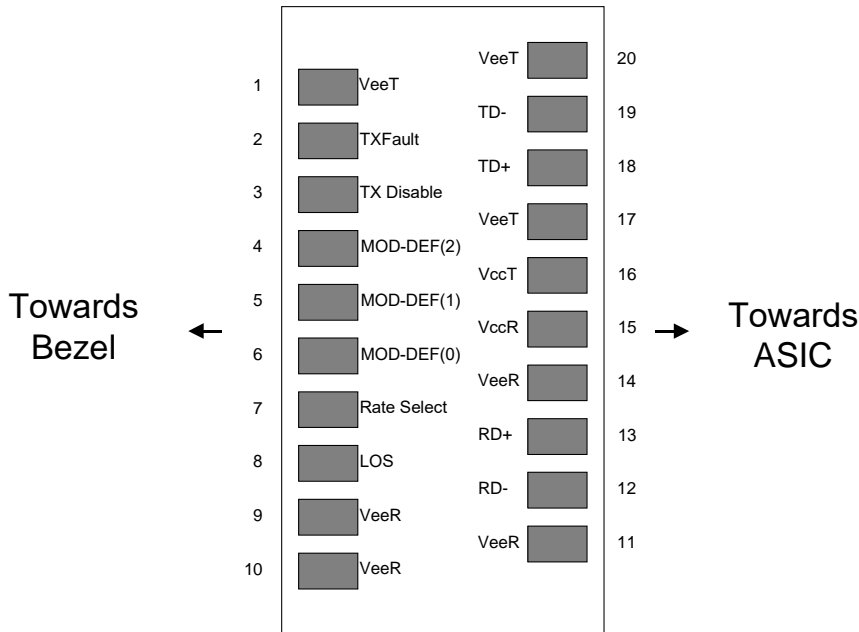
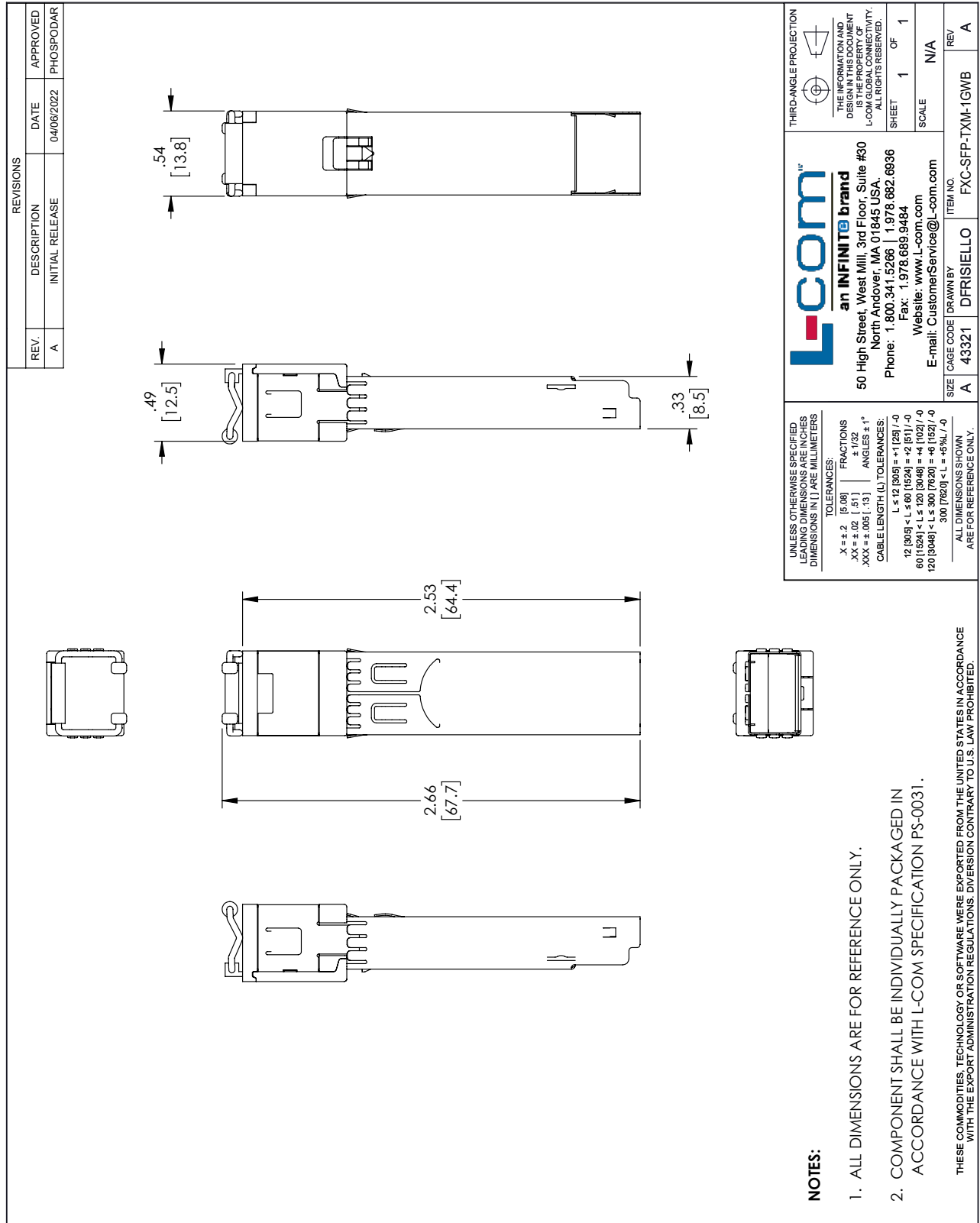


Figure 1. Diagram of Host Board Connector Block Pin Numbers and Names

Fiber Optic Transceiver, SFP, RJ-45, TM Copper 100m, AutoNeg 10/100/1000M, SGMII, Wirebale, Adva from L-com has same day shipment for domestic and International orders. Our portfolio includes coaxial cable assemblies, connectors, adapters and custom products as well as lightning and surge protectors, NEMA rated enclosures, and an RF product line which includes antennas, amplifiers, passive, and active components.

The information contained within this document is accurate to the best of our knowledge and representative of the part described herein. It may be necessary to make modifications to the part and/or the documentation of the part in order to impliment improvements. L-com reserves the right to make such changes as required. Unless otherwise stated, all specifications are nominal. L-com does not make any representation or warranty regarding the suitability of the part described herein for any particular purpose, and L-com does not assume liability arising out of the use of any part or document.

L-com CAD Drawing



NOTES:

1. ALL DIMENSIONS ARE FOR REFERENCE ONLY.
2. COMPONENT SHALL BE INDIVIDUALLY PACKAGED IN ACCORDANCE WITH L-COM SPECIFICATION PS-0031.

THESE COMMODITIES, TECHNOLOGY OR SOFTWARE WERE EXPORTED FROM THE UNITED STATES IN ACCORDANCE WITH THE EXPORT ADMINISTRATION REGULATIONS. DIVERSION CONTRARY TO U.S. LAW PROHIBITED.

T-Rev-D