

Fiber Optic Transceiver, SFP, RJ-45, TM Copper 100m, AutoNeg 10/100/1000M, SGMII, Wirebale, MSA



## FXC-SFP-TXM-1GWB-MSA

### Features

- Operating Data Rate up to 1.25 Gbps
- Distance Range 100M
- Single 3.3V Power Supply and TTL Logic Interface
- Pluggable SFP Duplex LC Connector
- Standard and Industrial Operating Temperature
- Compliant with MSA SFP Specification

### Applications

- Telecom (Service Provider)
- Datacom
- Enterprise Networks
- Government
- Fiber to the home/business

### Description

The L-com FXC-SFP-TXM-1GWB-MSA is an SFP form-factor transceiver, supporting 1G Ethernet rates. The L-com FXC-SFP-TXM-1GWB-MSA supports 100M distance and it is MSA compliant transceiver. The L-com FXC-SFP-TXM-1GWB-MSA features digital diagnostics for performance monitoring of the transceiver. The L-com FXC-SFP-TXM-1GWB-MSA is one of thousands of fiber optic connectivity products available from L-com in-stock and ready to ship. Contact our knowledgeable technical support and sales staff for your answers on fiber optic connectivity or other L-com products.

### Configuration

Data Rate	1 Gbps
Form Factor	SFP
Connector	RJ45/RJ48
Distance	0.1 km
Mfg Platform Compatibility	MSA

### Electrical Specifications

Description	Minimum	Typical	Maximum	Units
Wattage			1.04	W
Power Supply Voltage Vcc	3.15	3.3	3.45	V
Power Supply Current Icc			300	mA

### Environmental Specifications

Notes:

**Compliance Certifications** (see [product page](#) for current document)

### Plotted and Other Data

Notes:

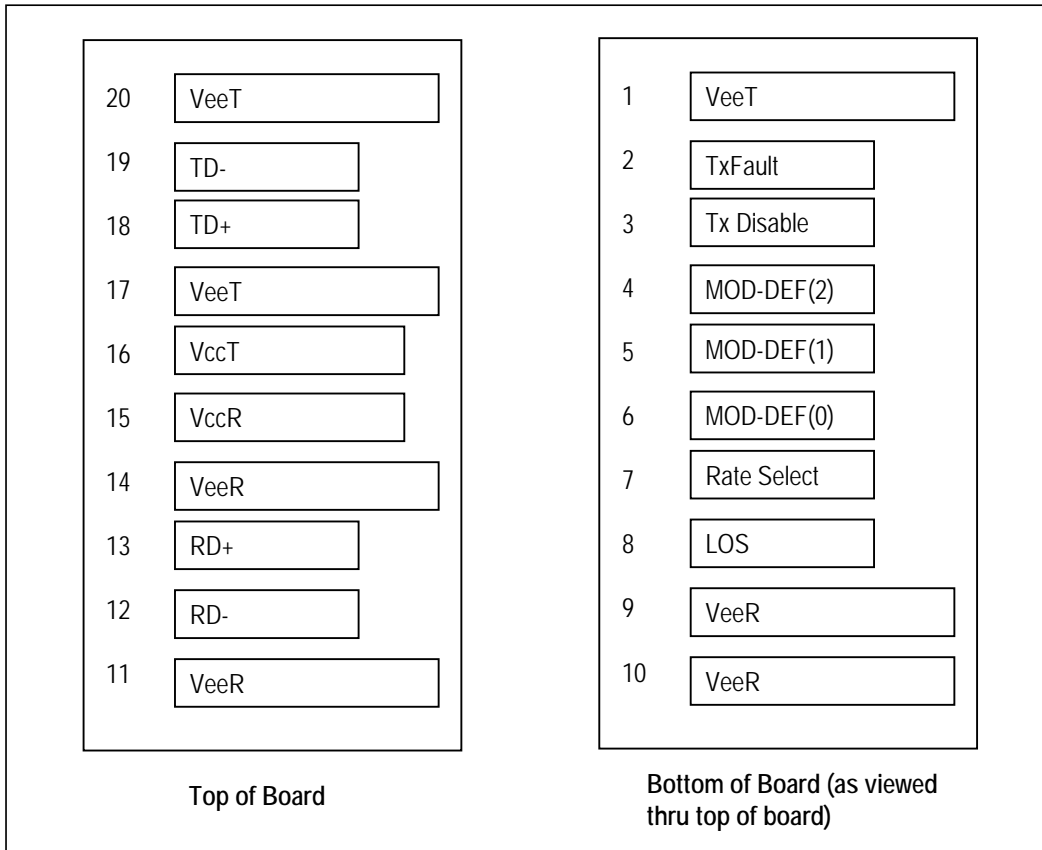
Click the following link (or enter part number in "SEARCH" on website) to obtain additional part information including price, inventory and certifications:  
[Fiber Optic Transceiver, SFP, RJ-45, TM Copper 100m, AutoNeg 10/100/1000M, SGMII, Wirebale, MSA FXC-SFP-TXM-1GWB-MSA](#)

Fiber Optic Transceiver, SFP, RJ-45, TM Copper 100m,  
AutoNeg 10/100/1000M, SGMII, Wirebale, MSA



**FXC-SFP-TXM-1GWB-MSA**

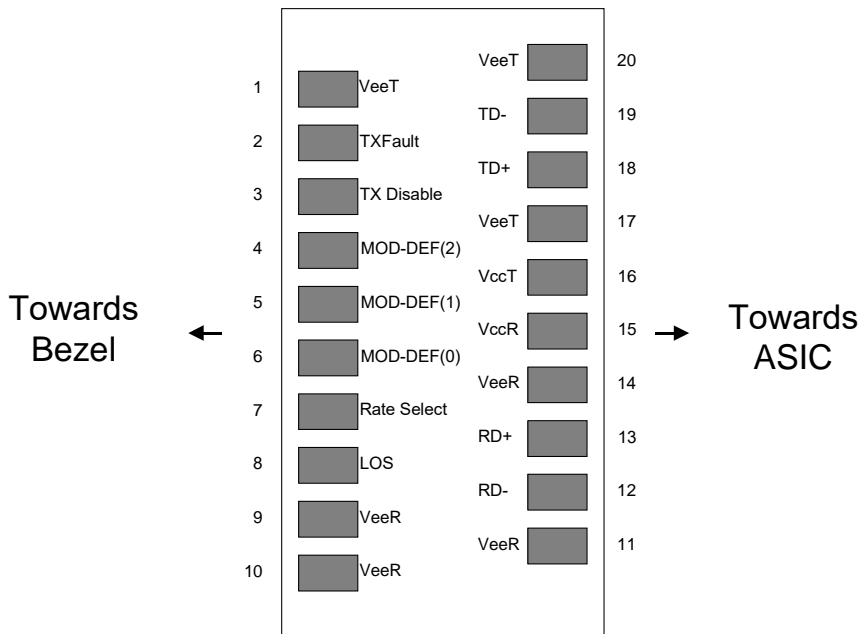
**Small Form-factor Pluggable (SFP) Transceiver MultiSource Agreement (MSA)**



Fiber Optic Transceiver, SFP, RJ-45, TM Copper 100m, AutoNeg 10/100/1000M, SGMII, Wirebale, MSA



**FXC-SFP-TXM-1GWB-MSA**

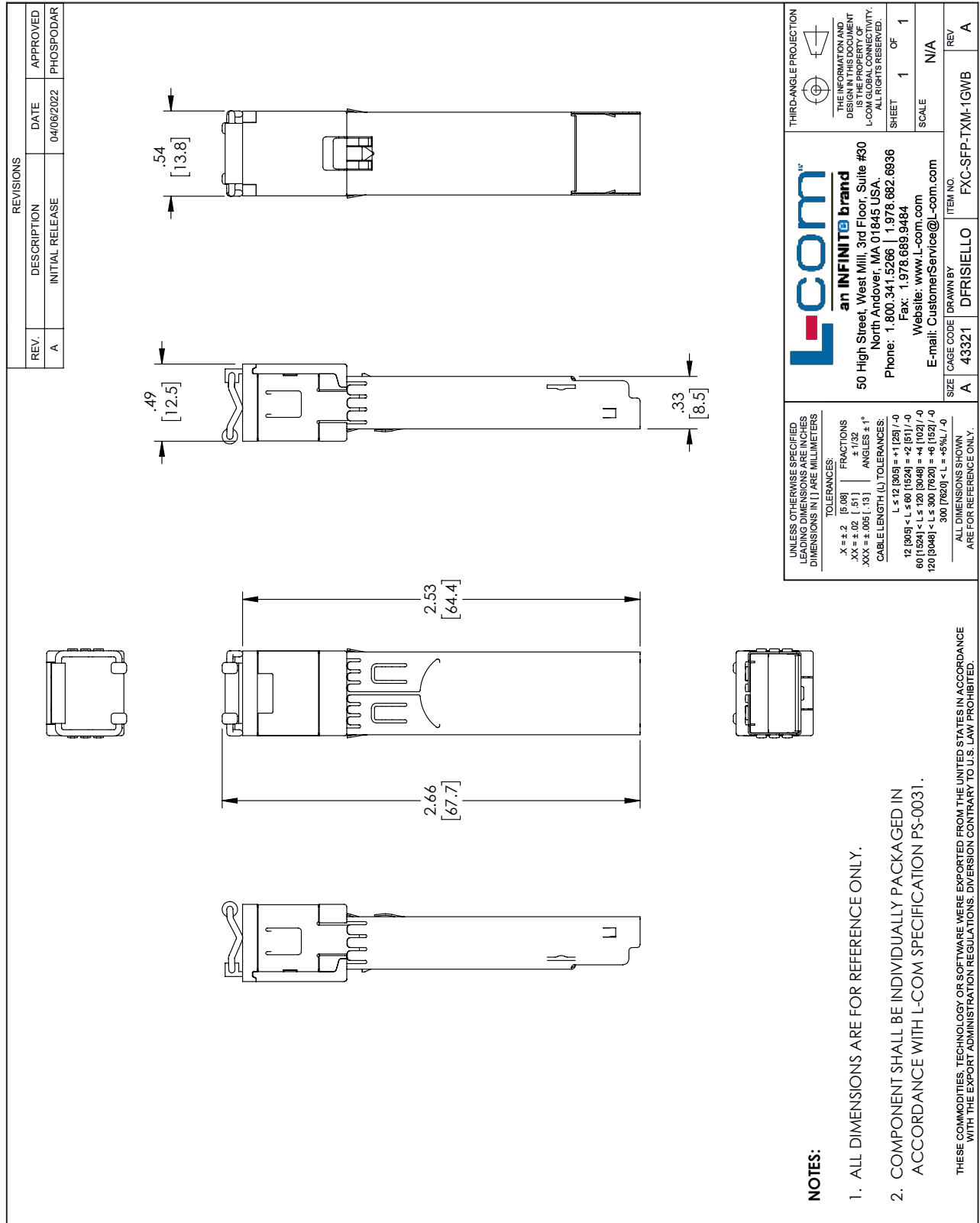


**Figure 1. Diagram of Host Board Connector Block Pin Numbers and Names**

Fiber Optic Transceiver, SFP, RJ-45, TM Copper 100m, AutoNeg 10/100/1000M, SGMII, Wirebale, MSA from L-com has same day shipment for domestic and International orders. Our portfolio includes coaxial cable assemblies, connectors, adapters and custom products as well as lightning and surge protectors, NEMA rated enclosures, and an RF product line which includes antennas, amplifiers, passive, and active components.

The information contained within this document is accurate to the best of our knowledge and representative of the part described herein. It may be necessary to make modifications to the part and/or the documentation of the part in order to impliment improvements. L-com reserves the right to make such changes as required. Unless otherwise stated, all specifications are nominal. L-com does not make any representation or warranty regarding the suitability of the part described herein for any particular purpose, and L-com does not assume liability arising out of the use of any part or document.

L-com CAD Drawing



**L-com**  
an INFINITE brand

50 High Street, West Mill, 3rd Floor, Suite #30  
North Andover, MA 01845, USA.  
Phone: 1.800.341.5266 | 1.978.682.6936  
Fax: 1.978.689.9484  
Website: www.L-com.com  
E-mail: CustomerService@L-com.com

THIRD-ANGLE PROJECTION

THE INFORMATION AND DIMENSIONS SHOWN HEREIN IS THE PROPERTY OF L-COM GLOBAL CONNECTIVITY. ALL RIGHTS RESERVED.

SHEET 1 OF 1  
SCALE N/A

ITEM NO. FXC-SFP-TXM-1GWB  
REV A

UNLESS OTHERWISE SPECIFIED LEADING DIMENSIONS ARE IN INCHES DIMENSIONS IN [ ] ARE MILLIMETERS

TOLERANCES:  
 .X = ±.2 [5.08] FRACTIONS ± 1/32  
 .XX = ±.02 [ .51] ANGLES ± 1°  
 .XXX = ±.005 [ .13]  
 CABLE LENGTH (L) TOLERANCES:  
 L ≤ 12 [305] = +1 [25] / -0  
 12 [305] < L ≤ 60 [1524] = +2 [51] / -0  
 60 [1524] < L ≤ 120 [3048] = +4 [102] / -0  
 120 [3048] < L ≤ 300 [7620] = +6 [152] / -0  
 300 [7620] < L = +5% / -0

ALL DIMENSIONS SHOWN ARE FOR REFERENCE ONLY.

- NOTES:**
- ALL DIMENSIONS ARE FOR REFERENCE ONLY.
  - COMPONENT SHALL BE INDIVIDUALLY PACKAGED IN ACCORDANCE WITH L-COM SPECIFICATION PS-0031.
- THESE COMMODITIES, TECHNOLOGY OR SOFTWARE WERE EXPORTED FROM THE UNITED STATES IN ACCORDANCE WITH THE EXPORT ADMINISTRATION REGULATIONS. DIVERSION CONTRARY TO U.S. LAW PROHIBITED.

T-Rev-D