

Fiber Optic Transceiver, SFP+, RJ-45, Copper 30m, 10GBase-T, Wirebale, Brocade/Foundry



## FXC-SFPP-TXM-10G-BFO

### Features

- Operating Data Rate up to 11.30 Gbps
- Distance Range 30M
- Single 3.3V Power Supply and TTL Logic Interface
- Pluggable RJ45 Connector
- Standard and Industrial Operating Temperature
- Compliant with Brocade/Foundry SFPP Specification

### Applications

- Telecom (Service Provider)
- Datacom
- Enterprise Networks
- Government
- Fiber to the home/business

### Description

The L-com FXC-SFPP-TXM-10G-BFO is an SFPP form-factor transceiver, supporting 10G Ethernet rates. The L-com FXC-SFPP-TXM-10G-BFO supports 30M distance and it is Brocade/Foundry compliant transceiver. The L-com FXC-SFPP-TXM-10G-BFO features digital diagnostics for performance monitoring of the transceiver. The L-com FXC-SFPP-TXM-10G-BFO is one of thousands of fiber optic connectivity products available from L-com in-stock and ready to ship. Contact our knowledgeable technical support and sales staff for your answers on fiber optic connectivity or other L-com products.

### Configuration

Data Rate	10 Gbps
Form Factor	SFP+
Connector	RJ45
Distance	0.03 km
Mfg Platform Compatibility	Brocade/Foundry

### Electrical Specifications

Description	Minimum	Typical	Maximum	Units
Wattage			2.45	W
Power Supply Voltage	3.15	3.3	3.45	V
Power Supply Current			710	mA

### Environmental Specifications

#### Temperature

Operating Range	-10 to +70 deg C
Storage Range	-40 to +85 deg C

Notes:

Click the following link (or enter part number in "SEARCH" on website) to obtain additional part information including price, inventory and certifications:  
[Fiber Optic Transceiver, SFP+, RJ-45, Copper 30m, 10GBase-T, Wirebale, Brocade/Foundry FXC-SFPP-TXM-10G-BFO](#)

Fiber Optic Transceiver, SFP+, RJ-45, Copper 30m, 10GBase-T, Wirebale, Brocade/Foundry

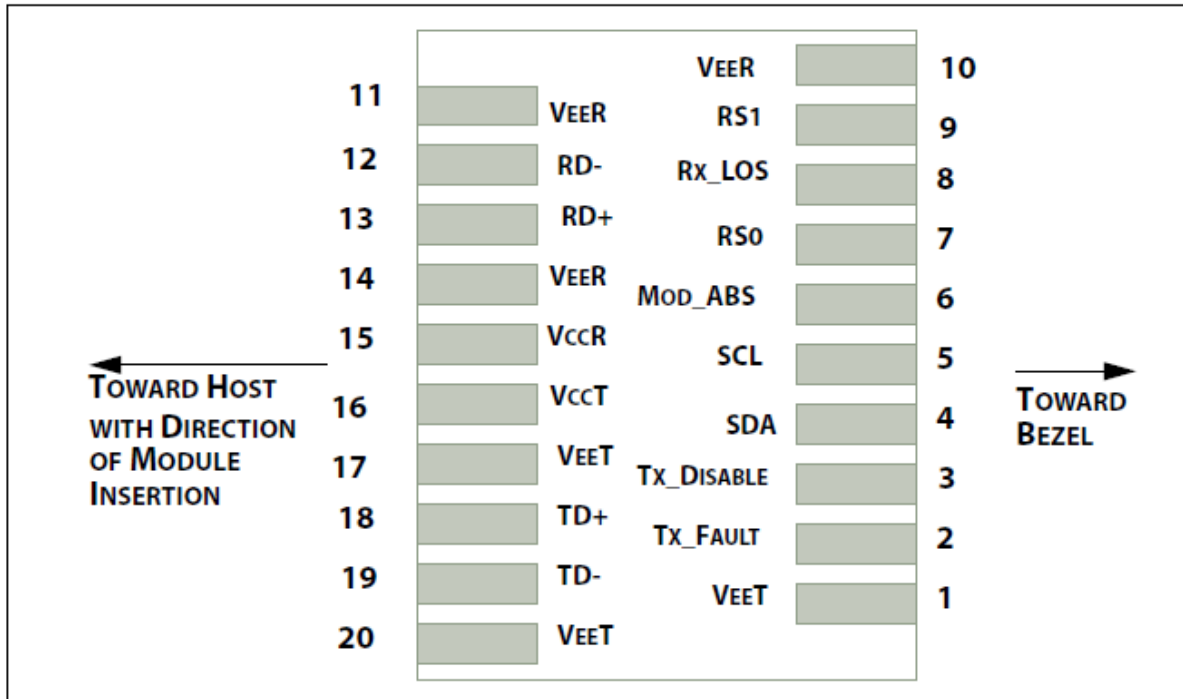


## FXC-SFPP-TXM-10G-BFO

**Compliance Certifications** (see [product page](#) for current document)

### Plotted and Other Data

Notes:



Fiber Optic Transceiver, SFP+, RJ-45, Copper 30m,  
10GBase-T, Wirebale, Brocade/Foundry



## FXC-SFPP-TXM-10G-BFO

Contacts	Logic <sup>1</sup>	Symbol	Power Sequence Order	Name/Description	Note
case		case	See 2	Module case	
1		VeeT	1st	Module Transmitter Ground	3
2	LVTTTL-O	Tx_Fault	3rd	Module Transmitter Fault	4
3	LVTTTL-I	Tx_Disable	3rd	Transmitter Disable; Turns off transmitter laser output	5
4	LVTTTL-I/O	SDA	3rd	2-wire Serial Interface Data Line (Same as MOD-DEF2 in INF-8074i)	6
5	LVTTTL-I/O	SCL	3rd	2-wire Serial Interface Clock (Same as MOD-DEF1 in INF-8074i)	6
6		Mod_ABS	3rd	Module Absent, connected to VeeT or VeeR in the module	7
7	LVTTTL-I	RS0	3rd	Rate Select 0, optionally controls SFP+ module receiver.	8
8	LVTTTL-O	Rx_LOS	3rd	Receiver Loss of Signal Indication (In FC designated as Rx_LOS and in Ethernet designated as Signal Detect)	4
9	LVTTTL-I	RS1	3rd	Rate Select 1, optionally controls SFP+ module transmitter	8
10		VeeR	1st	Module Receiver Ground	3
11		VeeR	1st	Module Receiver Ground	3
12	CML-O	RD-	3rd	Receiver Inverted Data Output	
13	CML-O	RD+	3rd	Receiver Non-Inverted Data Output	
14		VeeR	1st	Module Receiver Ground	3
15		VccR	2nd	Module Receiver 3.3 V Supply	
16		VccT	2nd	Module Transmitter 3.3 V Supply	
17		VeeT	1st	Module Transmitter Ground	3
18	CML-I	TD+	3rd	Transmitter Non-Inverted Data Input	
19	CML-I	TD-	3rd	Transmitter Inverted Data Input	
20		VeeT	1st	Module Transmitter Ground	3

1. Labeling as inputs (I) and outputs (O) are from the perspective of the module
2. The case makes electrical contact to the cage before any of the board edge contacts are made.
3. The module signal ground contacts, VeeR and VeeT, should be isolated from the module case.
4. This contact is an open collector/drain output contact and shall be pulled up on the host see [2.4.1](#) and [2.4.6](#). Pull ups can be connected to one of several power supplies, however the host board design shall ensure that no module contact has voltage exceeding module VccT/R + 0.5 V.
5. Tx\_Disable is an input contact with a 4.7 kΩ to 10 kΩ pullup to VccT inside the module.
6. See [4.2](#).
7. See [2.4.4](#).
8. For SFF-8431 rate select definition see section [2.4.3](#) and [2.5](#). (If implementing SFF-8079 contact 7 and 9 in SFF-8431 are used for AS0 and AS1 respectively).

Fiber Optic Transceiver, SFP+, RJ-45, Copper 30m,  
10GBase-T, Wirebale, Brocade/Foundry

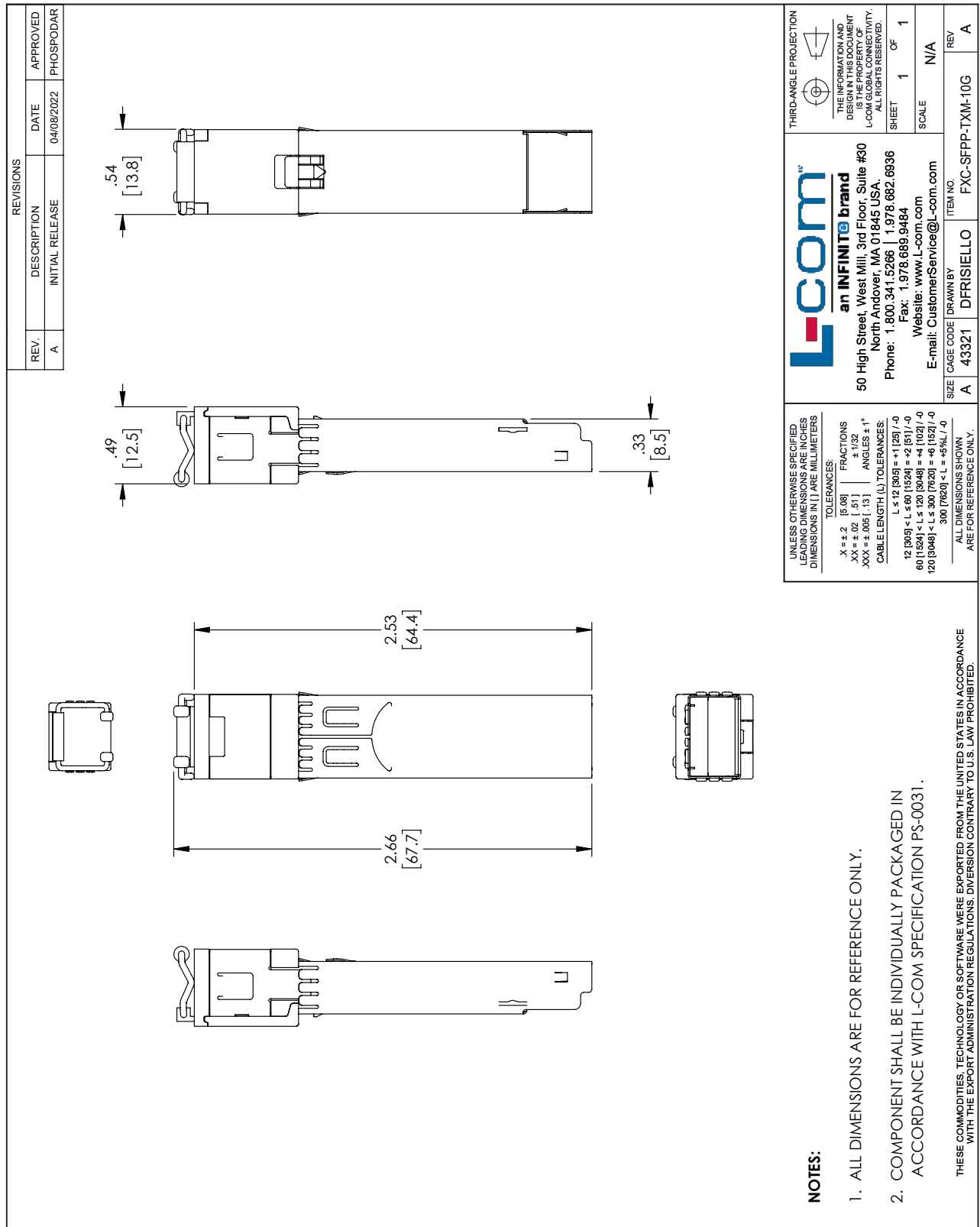


## FXC-SFPP-TXM-10G-BFO

Fiber Optic Transceiver, SFP+, RJ-45, Copper 30m, 10GBase-T, Wirebale, Brocade/Foundry from L-com has same day shipment for domestic and International orders. Our portfolio includes coaxial cable assemblies, connectors, adapters and custom products as well as lightning and surge protectors, NEMA rated enclosures, and an RF product line which includes antennas, amplifiers, passive, and active components.

The information contained within this document is accurate to the best of our knowledge and representative of the part described herein. It may be necessary to make modifications to the part and/or the documentation of the part in order to impliment improvements. L-com reserves the right to make such changes as required. Unless otherwise stated, all specifications are nominal. L-com does not make any representation or warranty regarding the suitability of the part described herein for any particular purpose, and L-com does not assume liability arising out of the use of any part or document.

L-com CAD Drawing



**NOTES:**

1. ALL DIMENSIONS ARE FOR REFERENCE ONLY.
2. COMPONENT SHALL BE INDIVIDUALLY PACKAGED IN ACCORDANCE WITH L-COM SPECIFICATION PS-0031.

THESE COMMODITIES, TECHNOLOGY OR SOFTWARE WERE EXPORTED FROM THE UNITED STATES IN ACCORDANCE WITH THE EXPORT ADMINISTRATION REGULATIONS. DIVERSION CONTRARY TO U.S. LAW PROHIBITED.

UNLESS OTHERWISE SPECIFIED LEADING DIMENSIONS ARE IN INCHES DIMENSIONS IN [ ] ARE MILLIMETERS

**TOLERANCES:**  
 .X = ±.2 [5.08] FRACTIONS ± 1/32  
 .XX = ±.02 [ .51] ANGLES ± 1°  
 .XXX = ±.005 [ .13]

**CABLE LENGTH (L) TOLERANCES:**  
 L ≤ 12 [305] = -1 [25] / +0  
 12 [305] < L ≤ 60 [1524] = -2 [51] / +0  
 60 [1524] < L ≤ 120 [3048] = -4 [102] / +0  
 120 [3048] < L ≤ 300 [7620] = -6 [152] / +0  
 300 [7620] < L = +5%L / -0

ALL DIMENSIONS SHOWN ARE FOR REFERENCE ONLY.

SIZE: A CAGE CODE: 43321 DRAWN BY: DFRISIELLO ITEM NO.: FXC-SFPP-TXM-10G REV: A

**L-com™**  
 an INFINITE brand  
 50 High Street, West Mill, 3rd Floor, Suite #30  
 North Andover, MA 01845 USA.  
 Phone: 1.800.341.5266 | 1.978.682.6936  
 Fax: 1.978.689.9484  
 Website: www.L-com.com  
 E-mail: CustomerService@L-com.com

THIRD-ANGLE PROJECTION

THE INFORMATION AND DIMENSIONS SHOWN HEREIN IS THE PROPERTY OF L-COM GLOBAL CONNECTIVITY. ALL RIGHTS RESERVED.  
 SHEET 1 OF 1  
 SCALE: N/A