

Fiber Optic Transceiver Series, SFP+, DWDM,
80 km, 10G DDM, BTI Compatible



FXC-SFPPDxxZR10G-BTI

Features

- Operating Data Rates up to 11.3 Gbps
- Distance Range 80 km
- Pluggable SFP+ Duplex LC Connectors
- Standard and Industrial Operating Temperatures
- Compliant with BTI Specification

Applications

- Telecom (Service Providers)
- Datacom
- Enterprise Networks
- Government
- Fiber to the Home / Business

Description

The L-com FXC-SFPPDxxZR10G-BTI is the highest quality SFP+ transceiver series in the industry that delivers a dependable 10G data rate at operating wavelengths from 1530.33 to 1561.42 nm. This SFP+ DWDM transceiver series has been designed, programmed and tested to be 100% compliant with the BTI system level specifications. The L-com FXC-SFPPDxxZR10G-BTI series supports a distance up to 80 km to meet current and future networking requirements. The L-com FXC-SFPPDxxZR10G-BTI series features digital diagnostics for performance monitoring of the transceiver. The L-com FXC-SFPPDxxZR10G-BTI series is one of thousands of fiber optic connectivity products available from L-com's in-stock inventory and ready to ship. Contact our knowledgeable technical support and sales staff with your questions on fiber optic connectivity or other L-com products.

Configuration

Data Rate	11.3 Gbps
Form Factor	SFP+
Connector	LC
Connector Mode	Duplex
Mode	Single Mode
Distance	80 km
Mfg Platform Compatibility	BTI

Electrical Specifications

Description	Minimum	Typical	Maximum	Units
Power Supply Voltage	3.15	3.3	3.45	V
Power Supply Current		300	435	mA
Module Total Power			1.5	W

Optical Specifications

Description	Minimum	Typical	Maximum	Units
TX Center Wavelength	1530		1562	nm
TX Data Rate	0.614		11.3	Gbps
TX Average Output Power	0		5	dBm

Click the following link (or enter part number in "SEARCH" on website) to obtain additional part information including price, inventory and certifications:
[FXC-SFPPDxxZR10G-BTI](#)

Fiber Optic Transceiver Series, SFP+, DWDM,
80 km, 10G DDM, BTI Compatible



FXC-SFPPDxxZR10G-BTI

TX Extinction Ratio	3.5		dB
RX Receiver Sensitivity		-23	dBm
RX Receiver Overload	-8		dBm

*See table below

Fiber Optic Transceiver Series, SFP+, DWDM,
80 km, 10G DDM, BTI Compatible



FXC-SFPPDxxZR10G-BTI

Wavelength Channel No.

Channel	Frequency	Wavelength		Channel	Frequency	Wavelength
xx	THz	nm		xx	THz	nm
20	192.0	1561.41		40	194.0	1545.32
21	192.1	1560.61		41	194.1	1544.53
22	192.2	1559.79		42	194.2	1543.73
23	192.3	1558.98		43	194.3	1542.94
24	192.4	1558.17		44	194.4	1542.14
25	192.5	1557.36		45	194.5	1541.35
26	192.6	1556.55		46	194.6	1540.56
27	192.7	1555.75		47	194.7	1539.77
28	192.8	1554.94		48	194.8	1538.98
29	192.9	1554.13		49	194.9	1538.19
30	193.0	1553.33		50	195.0	1537.4
31	193.1	1552.52		51	195.1	1536.61
32	193.2	1551.72		52	195.2	1535.82
33	193.3	1550.92		53	195.3	1535.04
34	193.4	1550.12		54	195.4	1534.25
35	193.5	1549.32		55	195.5	1533.47
36	193.6	1548.51		56	195.6	1532.68
37	193.7	1547.72		57	195.7	1531.9
38	193.8	1546.92		58	195.8	1531.12
39	193.9	1546.12		59	195.9	1530.33

Fiber Optic Transceiver Series, SFP+, DWDM,
80 km, 10G DDM, BTI Compatible



FXC-SFPPDxxZR10G-BTI

Environmental Specifications

Temperature

Operating Range

0 to +70 deg C

Storage Range

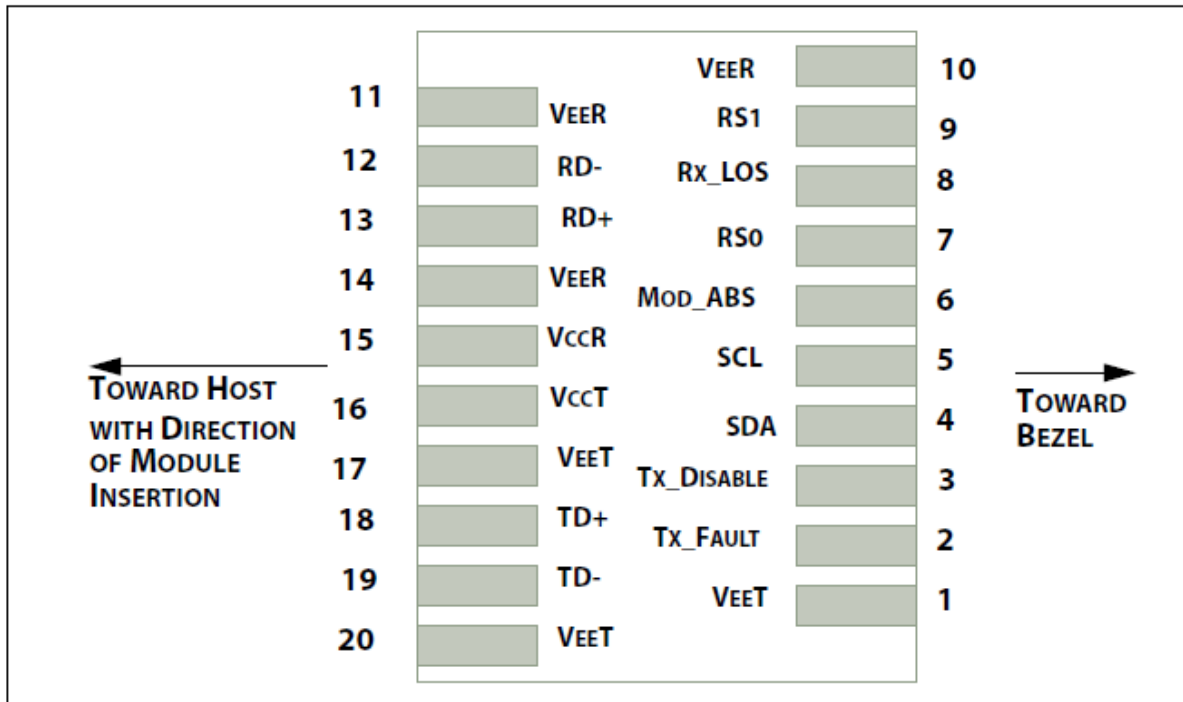
-40 to +85 deg C

Notes:

Compliance Certifications (see [product page](#) for current document)

Plotted and Other Data

Notes:



Fiber Optic Transceiver Series, SFP+, DWDM,
80 km, 10G DDM, BTI Compatible



FXC-SFPPDxxZR10G-BTI

Contacts	Logic ¹	Symbol	Power Sequence Order	Name/Description	Note
case		case	See 2	Module case	
1		VeeT	1st	Module Transmitter Ground	3
2	LVTTTL-O	Tx_Fault	3rd	Module Transmitter Fault	4
3	LVTTTL-I	Tx_Disable	3rd	Transmitter Disable; Turns off transmitter laser output	5
4	LVTTTL-I/O	SDA	3rd	2-wire Serial Interface Data Line (Same as MOD-DEF2 in INF-8074i)	6
5	LVTTTL-I/O	SCL	3rd	2-wire Serial Interface Clock (Same as MOD-DEF1 in INF-8074i)	6
6		Mod_ABS	3rd	Module Absent, connected to VeeT or VeeR in the module	7
7	LVTTTL-I	RS0	3rd	Rate Select 0, optionally controls SFP+ module receiver.	8
8	LVTTTL-O	Rx_LOS	3rd	Receiver Loss of Signal Indication (In FC designated as Rx_LOS and in Ethernet designated as Signal Detect)	4
9	LVTTTL-I	RS1	3rd	Rate Select 1, optionally controls SFP+ module transmitter	8
10		VeeR	1st	Module Receiver Ground	3
11		VeeR	1st	Module Receiver Ground	3
12	CML-O	RD-	3rd	Receiver Inverted Data Output	
13	CML-O	RD+	3rd	Receiver Non-Inverted Data Output	
14		VeeR	1st	Module Receiver Ground	3
15		VccR	2nd	Module Receiver 3.3 V Supply	
16		VccT	2nd	Module Transmitter 3.3 V Supply	
17		VeeT	1st	Module Transmitter Ground	3
18	CML-I	TD+	3rd	Transmitter Non-Inverted Data Input	
19	CML-I	TD-	3rd	Transmitter Inverted Data Input	
20		VeeT	1st	Module Transmitter Ground	3

1. Labeling as inputs (I) and outputs (O) are from the perspective of the module
2. The case makes electrical contact to the cage before any of the board edge contacts are made.
3. The module signal ground contacts, VeeR and VeeT, should be isolated from the module case.
4. This contact is an open collector/drain output contact and shall be pulled up on the host see [2.4.1](#) and [2.4.6](#). Pull ups can be connected to one of several power supplies, however the host board design shall ensure that no module contact has voltage exceeding module VccT/R + 0.5 V.
5. Tx_Disable is an input contact with a 4.7 kΩ to 10 kΩ pullup to VccT inside the module.
6. See [4.2](#).
7. See [2.4.4](#).
8. For SFF-8431 rate select definition see section [2.4.3](#) and [2.5](#). (If implementing SFF-8079 contact 7 and 9 in SFF-8431 are used for AS0 and AS1 respectively).

Fiber Optic Transceiver Series, SFP+, DWDM,
80 km, 10G DDM, BTI Compatible

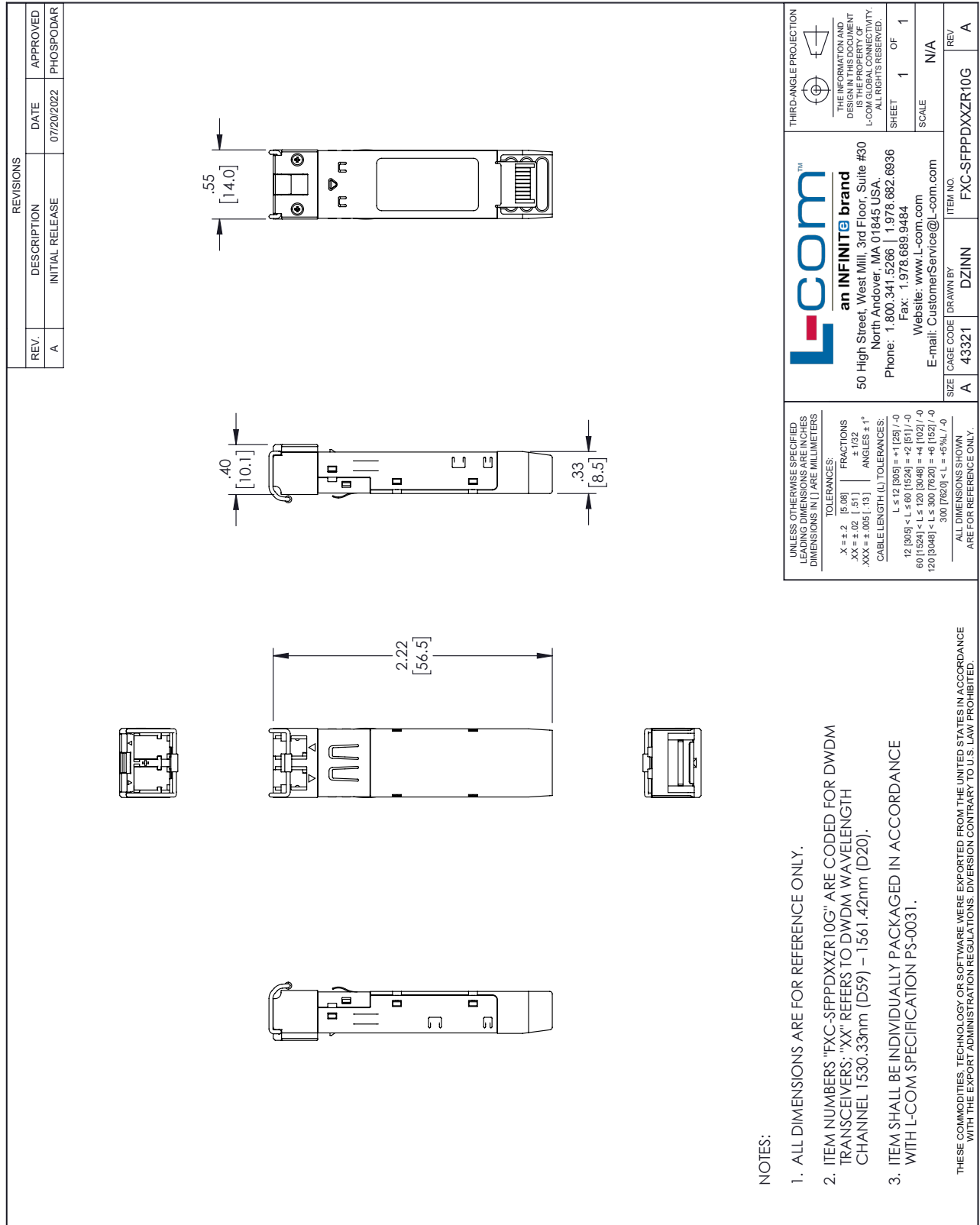


FXC-SFPPDxxZR10G-BTI

Fiber Optic Transceiver Series, SFP+, DWDM, 80 km, 10G DDM, BTI Compatible from L-com has same day shipment for domestic and International orders. Our portfolio includes coaxial cable assemblies, connectors, adapters and custom products as well as lightning and surge protectors, NEMA rated enclosures, and an RF product line which includes antennas, amplifiers, passive, and active components.

The information contained within this document is accurate to the best of our knowledge and representative of the part described herein. It may be necessary to make modifications to the part and/or the documentation of the part in order to impliment improvements. L-com reserves the right to make such changes as required. Unless otherwise stated, all specifications are nominal. L-com does not make any representation or warranty regarding the suitability of the part described herein for any particular purpose, and L-com does not assume liability arising out of the use of any part or document.

L-com CAD Drawing



UNLESS OTHERWISE SPECIFIED LEADING DIMENSIONS ARE IN INCHES DIMENSIONS IN [] ARE MILLIMETERS

TOLERANCES:

.X = ±.2 [5.08] FRACTIONS ± 1/32
 .XX = ±.02 [.51] ANGLES ± 1°
 .XXX = ±.005 [.13]

CABLE LENGTH (L) TOLERANCES:

L ≤ 12 [305] < L ≤ 60 [1524] = +1 [25] / -0
 60 [1524] < L ≤ 120 [3048] = +4 [102] / -0
 120 [3048] < L ≤ 300 [7620] = +6 [152] / -0
 300 [7620] < L = +5%L / -0

ALL DIMENSIONS SHOWN ARE FOR REFERENCE ONLY.

L-com™
an INFINITE brand
 50 High Street, West Mill, 3rd Floor, Suite #30
 North Andover, MA 01845 USA.
 Phone: 1.800.341.5266 | 1.978.682.6936
 Fax: 1.978.689.9484
 Website: www.L-com.com
 E-mail: CustomerService@L-com.com

THIRD-ANGLE PROJECTION

THE INFORMATION AND DIMENSIONS SHOWN ON THIS DRAWING IS THE PROPERTY OF L-COM GLOBAL CONNECTIVITY. ALL RIGHTS RESERVED.

SHEET 1 OF 1

SCALE N/A

SIZE A CAGE CODE 43321 DRAWN BY DZINN ITEM NO. FXC-SFPDXXZR10G REV. A