

1710-2690 MHz, 65 Degree Sector Antenna, 18 dBi gain,
2-12 Degree RET, 4 x 4.3-10 Female Connector



HG1727S4X6518-4F-R

Features

- Two (2) independent arrays with 2-12° Remote Electrical Tilt (RET) using AISG 2.0
- Internal RET
- 1710-2690 MHz
- 18 dBi gain
- Fiberglass radome for easy and rugged installation
- Downtilt brackets included
- 4 x 4.3-10 Female Connectors for Low Passive Intermodulation (PIM)
- <-153 dBc PIM at 2x20W tones

Applications

- Mobile networks
- WISP and Wi-Fi Networks
- GSM, UMTS, LTE, 5G Networks
- Public Safety
- Smart Cities
- Industrial and Enterprise Networks

Description

The L-com HG1727S4X6518-4F-R is a multi-band RET sector antenna with 45 deg. slant and 1710 to 2690 MHz frequency range with low PIM 4.3-10 female connectors. Remote Electrical Tilt (RET) antennas allow for the remote adjustment of its tilt angle. This feature optimizes signal strength and coverage, improving network performance and user experience. Communication networks that require continuous optimization to adjust antenna beams to changing traffic patterns and environmental conditions will benefit from the remote AISG controller ready capabilities of the HG1727S4X6518-4F-R RET antenna.

L-com's HG1727S4X6518-4F-R has multiple bands operating from 1710 to 1990 MHz with 17.6 dBi gain, 1920 to 2200 MHz with 17.8 dBi gain, 2200 to 2490 MHz with 18.2 dBi gain, and 2490 to 2690 MHz with 18 dBi gain. This directional sector antenna has a maximum input VSWR of 1.5:1 and a maximum input power of 250 watts.

Whether using a handheld controller or a base station radio with integrated AISG controller, the HG1727S4X6518-4F-R remote management capabilities make it easy to adjust the electrical tilt angle. Its durable fiberglass construction enables it to withstand harsh environments, making it suitable for use in various communication applications. The HG1727S4X6518-4F-R RET antenna has a Passive Intermodulation rating of -153 dBc, which results in reduced interference, more reliable communication, and increased operational efficiency.

L-com has one of the largest in-stock collections of directional antennas with our wide selection of superior quality RF parts, that ship same day. Make your online purchase right now to take advantage of our same-day shipping. For further information on similar products, our expert technical support and knowledgeable sales team can help you get the ideal multi band sector antenna as per your requirement.

Configuration

Design	Sector
Band Type	Multi
Radiation Pattern	Directional
Polarization	45 Deg. Slant
Connector Type	4.3-10 Female
Number of Ports	4
Lightning Protection	DC Grounded

Click the following link (or enter part number in "SEARCH" on website) to obtain additional part information including price, inventory and certifications:
[1710-2690 MHz, 65 Degree Sector Antenna, 18 dBi gain, 2-12 Degree RET, 4 x 4.3-10 Female Connector HG1727S4X6518-4F-R](#)

1710-2690 MHz, 65 Degree Sector Antenna, 18 dBi gain,
2-12 Degree RET, 4 x 4.3-10 Female Connector



HG1727S4X6518-4F-R

Electrical Specifications

Description	Minimum	Typical	Maximum	Units
Frequency Range	1,710		2,690	MHz
Input VSWR			1.5:1	
Impedance		50		Ohms
Gain		18		dBi
Input Power			250	Watts
Passive Intermodulation			-153	dBc
Intermodulation IM3 (2×43dBm carrier)				
Downtilt	2		12	Degrees

Specifications by Band

Description	Band 1	Band 2	Band 3	Band 4	Band 5	Units
Range	1.71 to 1.99	1.92 to 2.2	2.2 to 2.49	2.49 to 2.69		GHz
Gain	17.4	17.7	18	18.2		dBi
Horizontal HPBW	65	65	63	64		Degrees
Vertical HPBW	7.2	6.3	5.7	5.2		Degrees
Cross Polar Ratio HPBW	22	22	22	22		dB
Port to Port Isolation	28	28	28	28		dB
Front to Back Ratio	28	28	28	28		dB

Mechanical Specifications

Radome Material	Fiberglass
Size	
Length	4.13386 in [105 mm]
Width	12.5984 in [320 mm]
Height	53.54331 in [136 cm]
Mounting Mast Diameter	1.97 to 4.53 in [50.04 to 115.06 mm]
Weight	48.45 lbs [21.98 kg]

Environmental Specifications

Temperature	
Operating Range	-50 to +65 deg C
Mechanical Tilt	15 Degrees

1710-2690 MHz, 65 Degree Sector Antenna, 18 dBi gain,
2-12 Degree RET, 4 x 4.3-10 Female Connector

HG1727S4X6518-4F-R



Wind Survivability
Wind Loading

134.22 MPH [216.01 KPH]
Frontal = 61 lbf (272 N) @ 93 mph (150 km/h)
Lateral = 20 lbf (88 N) @ 93 mph (150 km/h)
Rearside = 68 lbf (304 N) @ 93 mph (150 km/h)

Compliance Certifications (see [product page](#) for current document)

Plotted and Other Data

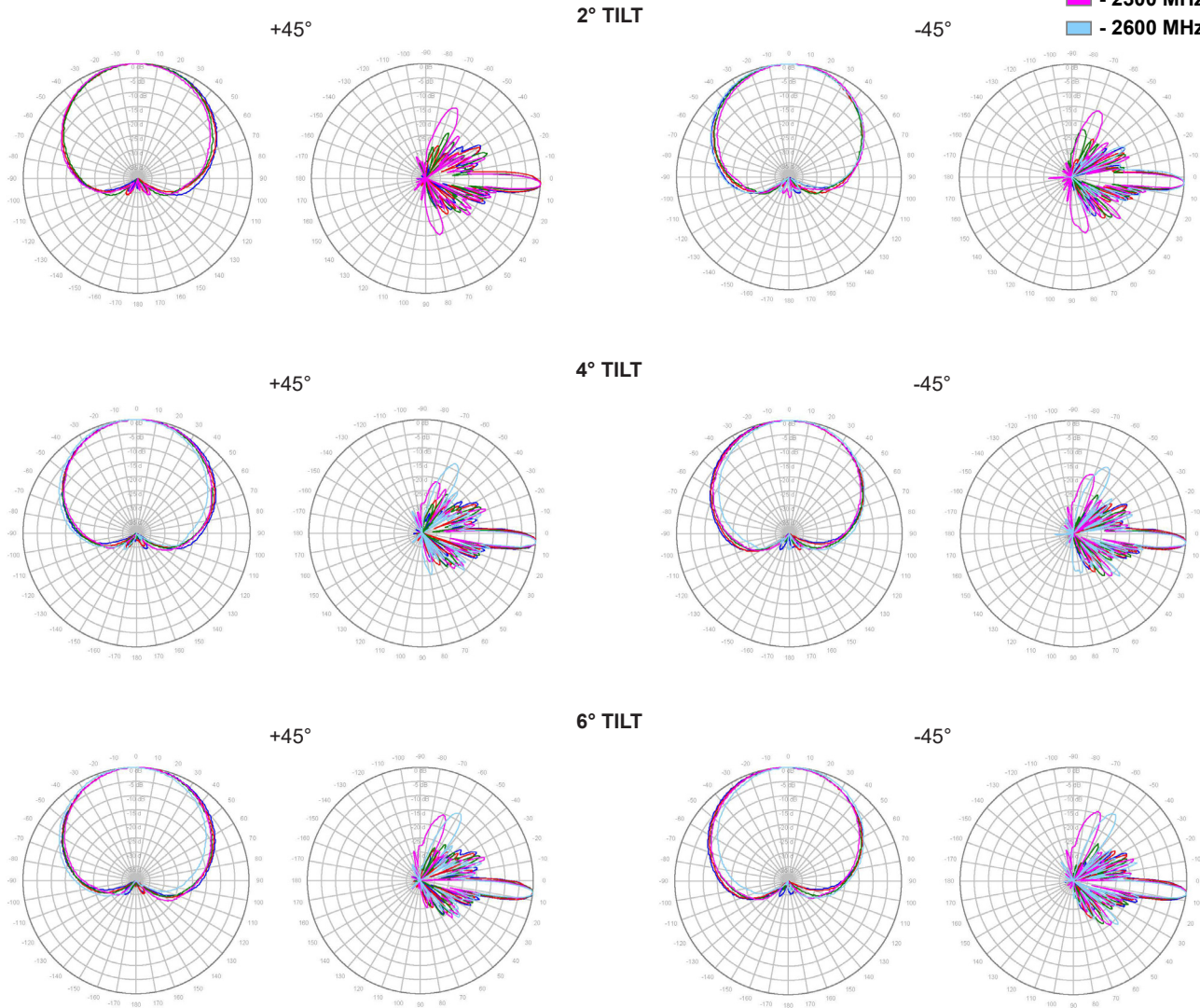
Notes:

1710-2690 MHz, 65 Degree Sector Antenna, 18 dBi gain,
2-12 Degree RET, 4 x 4.3-10 Female Connector



HG1727S4X6518-4F-R

- - 1800 MHz
- - 1900 MHz
- - 2100 MHz
- - 2300 MHz
- - 2600 MHz

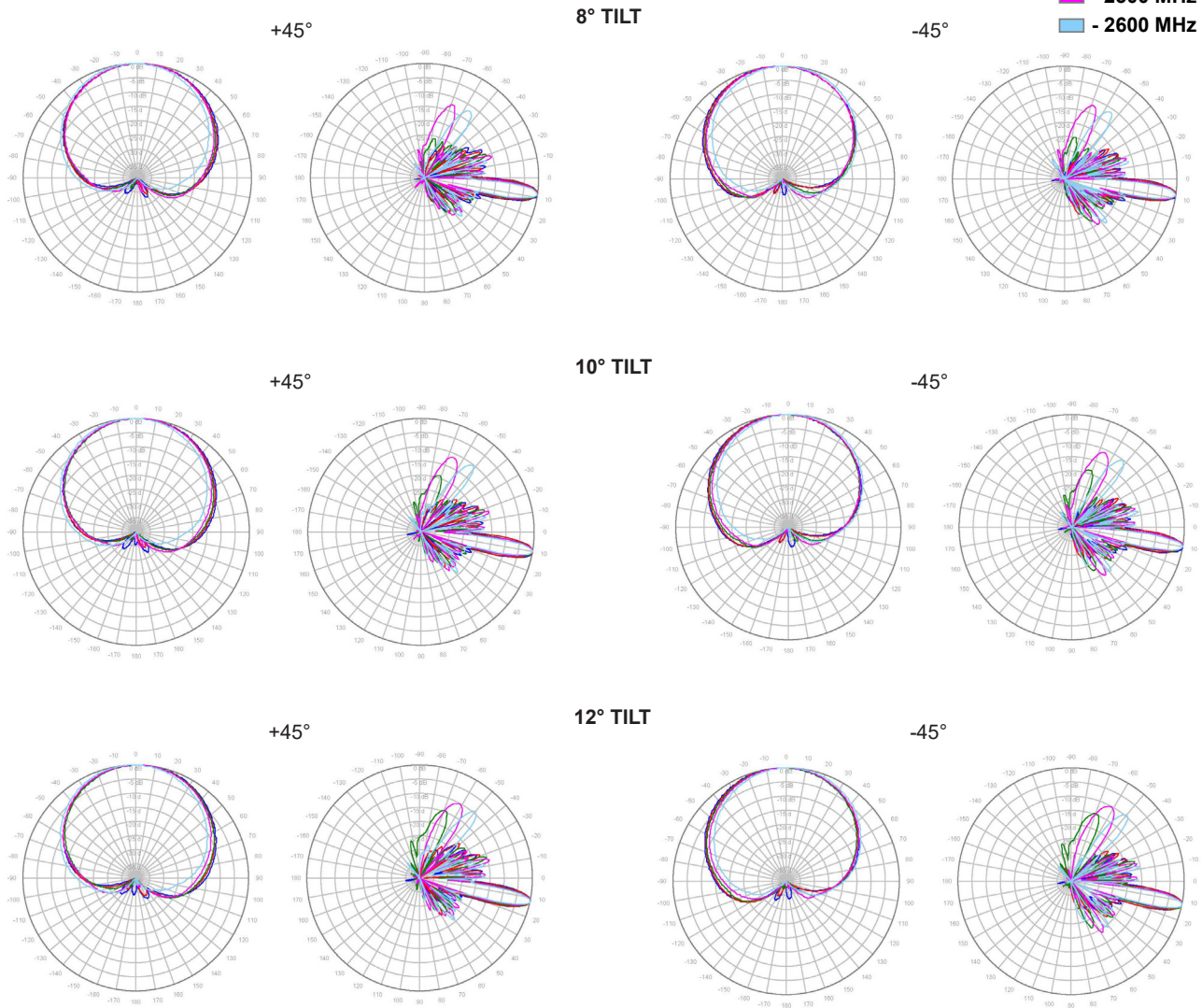


1710-2690 MHz, 65 Degree Sector Antenna, 18 dBi gain,
2-12 Degree RET, 4 x 4.3-10 Female Connector



HG1727S4X6518-4F-R

- - 1800 MHz
- - 1900 MHz
- - 2100 MHz
- - 2300 MHz
- - 2600 MHz



1710-2690 MHz, 65 Degree Sector Antenna, 18 dBi gain, 2-12 Degree RET, 4 x 4.3-10 Female Connector from L-com has same day

1710-2690 MHz, 65 Degree Sector Antenna, 18 dBi gain,
2-12 Degree RET, 4 x 4.3-10 Female Connector

HG1727S4X6518-4F-R



shipment for domestic and International orders. Our portfolio includes coaxial cable assemblies, connectors, adapters and custom products as well as lightning and surge protectors, NEMA rated enclosures, and an RF product line which includes antennas, amplifiers, passive, and active components.

The information contained within this document is accurate to the best of our knowledge and representative of the part described herein. It may be necessary to make modifications to the part and/or the documentation of the part in order to impliment improvements. L-com reserves the right to make such changes as required. Unless otherwise stated, all specifications are nominal. L-com does not make any representation or warranty regarding the suitability of the part described herein for any particular purpose, and L-com does not assume liability arising out of the use of any part or document.

1710-2690 MHz, 65 Degree Sector Antenna, 18 dBi gain, 2-12 Degree RET, 4 x 4.3-10 Female Connector

L-com CAD Drawing

