

2400 MHz to 2500 MHz and 3450 MHz to 3800 MHz Dual Band Cross Polarization MIMO Flat Panel, 15 to 18 dBi gain, 4 x N Female Connectors



HG2438-18XP-4NF

Features

- 2400 MHz to 2500 MHz / 3450 MHz to 3800 MHz
- 15.5 / 18 dBi High Gain
- Low Profile Design
- +/- 45 slant polarization for increased MIMO and data throughput
- Outdoor rated
- 4 x Type N connector

Applications

- WISP
- WLAN
- CBRS
- High Density WIFI Applications
- Hospitality, Industrial, Municipality
- LTE
- Rural High Speed Internet

Description

The L-com HG2438-18XP-4NF Flat Panel Antenna combines four dual band antennas in a single housing, operating from 2400 MHz to 2500 MHz and 3450 MHz to 3800 MHz. It is a professional quality antenna designed primarily for multiple input multiple output, point-to-multipoint and point-to-point applications in the 2.4 GHz and the 3.5 GHz frequency bands. The unit can be used with APs and Routers with one to four antenna ports.

This antenna from L-com has 30 to 44 degrees of Horizontal and 18 to 22 degrees of Vertical Beamwidth. HG2438-18XP-4NF incorporates advanced Cross Polarization technology that allows for the interoperability of multiple radios to transmit and receive paths. This technology allows for the attenuation of unwanted signals from adjacent channels and/or co-located equipment.

This high 15.5 / 18 dBi gain antenna features a heavy-duty ABS plastic radome ideal for high density outdoor applications. The HG2438-18XP-4NF antenna is designed for pole mounting and is DC Grounded. A tilt and swivel mast mount is included which allows for quick installation at various degrees of up/down tilt for easy alignment.

The HG2438-18XP-4NF features four separate antenna ports 2x2 MIMO or 4x4 MIMO, with N Type Female connectors and a minimum of 20 dB Port to Port Isolation. This X-pol Flat Panel antenna just like our wide selection of superior quality RF parts, ship same day. Contact our knowledgeable and friendly technical support and sales staff for your answers on antennas or other L-com products.

Configuration

Design	Panel
Band Type	Dual
Radiation Pattern	Directional
Polarization	±45 Deg. Slant
Connector Type	N Female
Number of Ports	4
Lightning Protection	DC Ground
Housing Material and Plating	White

Electrical Specifications

Description	Minimum	Typical	Maximum	Units
Frequency Range	2,400		3,800	MHz

Click the following link (or enter part number in "SEARCH" on website) to obtain additional part information including price, inventory and certifications:
[2400 MHz to 2500 MHz and 3450 MHz to 3800 MHz Dual Band Cross Polarization MIMO Flat Panel, 15 to 18 dBi gain, 4 x N Female Connectors](#)

2400 MHz to 2500 MHz and 3450 MHz to 3800 MHz Dual Band Cross Polarization MIMO Flat Panel, 15 to 18 dBi gain, 4 x N Female Connectors



HG2438-18XP-4NF

Input VSWR		2:1	
Impedance	50		Ohms
Input Power		50	Watts

Specifications by Band

Description	Band 1	Band 2	Band 3	Band 4	Band 5	Units
Range	2.4 to 2.5	3.45 to 3.8				GHz
Gain	15.5	18				dBi
Horizontal HPBW	44	30				Degrees
Vertical HPBW	22	18				Degrees
Port to Port Isolation	20	20				dB
Front to Back Ratio	25	25				dB
VSWR Max	2:1	2:1				

Mechanical Specifications

Radome Material	ABS
Housing Plating/Color	White
Size	
Length	17.52 in [445.01 mm]
Width	17.52 in [445.01 mm]
Height	1.38 in [35.05 mm]
Mounting Mast Diameter	1.38 to 1.97 in [35.05 to 50.04 mm]

Environmental Specifications

Temperature	
Operating Range	-40 to +60 deg C

Compliance Certifications (see [product page](#) for current document)

Plotted and Other Data

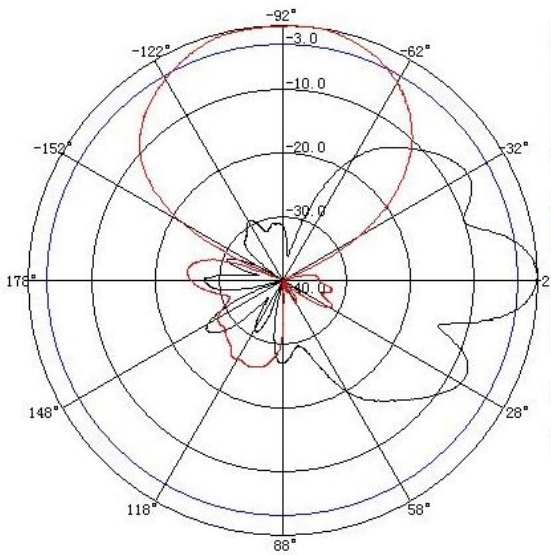
Notes:

2400 MHz to 2500 MHz and 3450 MHz to 3800 MHz Dual Band Cross Polarization MIMO Flat Panel, 15 to 18 dBi gain, 4 x N Female Connectors

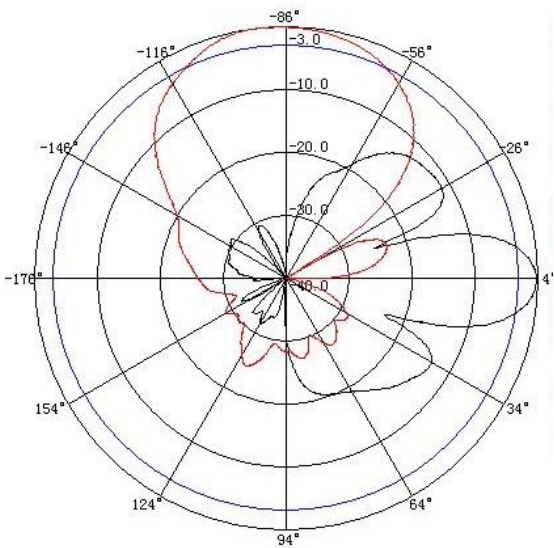


HG2438-18XP-4NF

Typical Radiation Pattern



Test Frequency: 2400MHz
Test Plane: Vertical
Test Plane : Horizontal

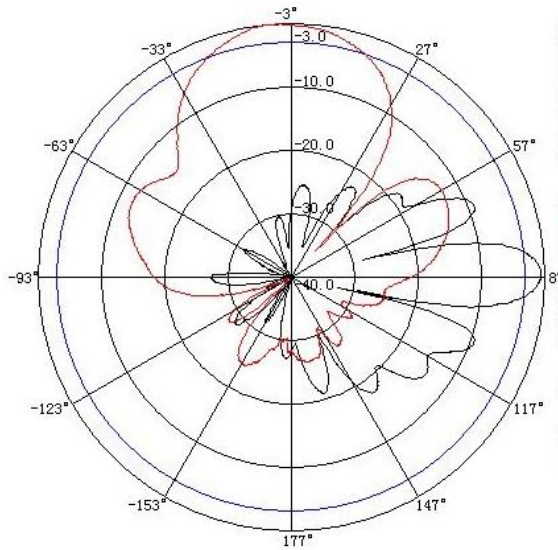


Test Frequency: 2500MHz
Test Plane: Vertical
Test Plane : Horizontal

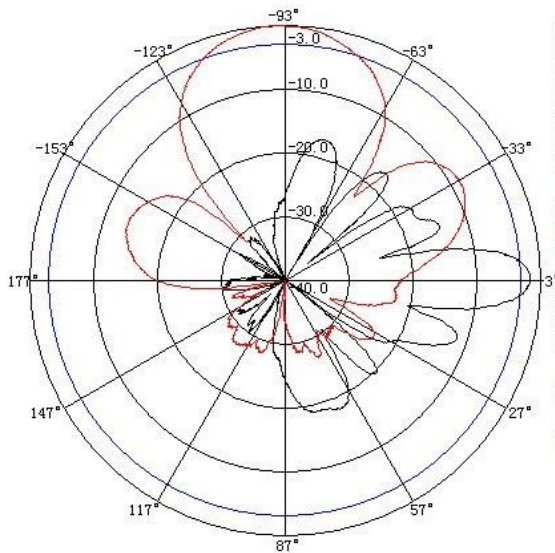
2400 MHz to 2500 MHz and 3450 MHz to 3800 MHz Dual Band Cross Polarization MIMO Flat Panel, 15 to 18 dBi gain, 4 x N Female Connectors



HG2438-18XP-4NF



Test Frequency: 3600MHz
Test Plane: Vertical
Test Plane : Horizontal



Test Frequency: 3800MHz
Test Plane: Vertical
Test Plane : Horizontal

2400 MHz to 2500 MHz and 3450 MHz to 3800 MHz Dual Band Cross Polarization MIMO Flat Panel, 15 to 18 dBi gain, 4 x N Female

2400 MHz to 2500 MHz and 3450 MHz to 3800 MHz Dual Band Cross Polarization MIMO Flat Panel, 15 to 18 dBi gain, 4 x N Female Connectors



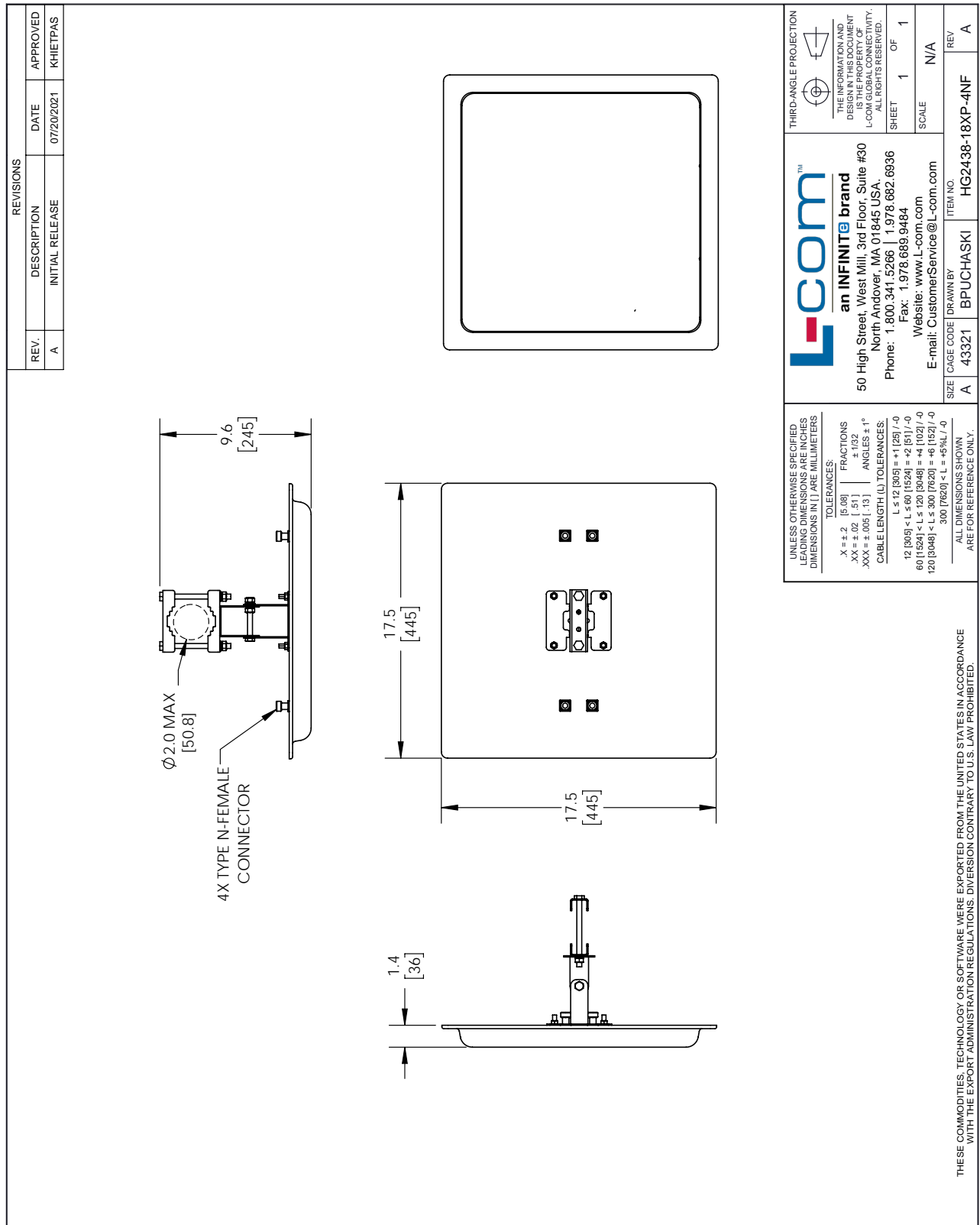
HG2438-18XP-4NF

Connectors from L-com has same day shipment for domestic and International orders. Our portfolio includes coaxial cable assemblies, connectors, adapters and custom products as well as lightning and surge protectors, NEMA rated enclosures, and an RF product line which includes antennas, amplifiers, passive, and active components.

The information contained within this document is accurate to the best of our knowledge and representative of the part described herein. It may be necessary to make modifications to the part and/or the documentation of the part in order to impliment improvements. L-com reserves the right to make such changes as required. Unless otherwise stated, all specifications are nominal. L-com does not make any representation or warranty regarding the suitability of the part described herein for any particular purpose, and L-com does not assume liability arising out of the use of any part or document.

2400 MHz to 2500 MHz and 3450 MHz to 3800 MHz Dual Band Cross Polarization MIMO Flat Panel, 15 to 18 dBi gain, 4 x N Female Connectors

L-com CAD Drawing



T-Rev.D