

Flat Panel Antenna, 4900 to 6200 MHz, 23 dBi, 2 x 2 MIMO, N Female, H/V or 45 Deg. Slant



HG4958-23DP

Features

- 2-port Flat panel antenna
- 4900 to 6200 MHz, 23 dBi
- VSWR < 1.7:1
- All aluminum material
- Dual slant (V/H or $\pm 45^\circ$)
- Horizontal beam-width 12°
- Vertical beam-width 12°
- 100 W max input power per port
- 2 x N type female connectors
- DC ground
- Water proof rating: IP-65

Applications

- Indoor or outdoor
- Point to point data links (PtP)
- Point to multi-point data links (PtMP)
- Wi-Fi 5, Wi-Fi 6
- Unlicensed 5GHz and 6GHz bands
- 5G bands - n46, n47, n96, n102
- 2x2 MIMO capability
- High speed internet access

Description

L-com's HG4958-23DP is a single band MIMO flat panel antenna that ships on the same day as ordered. It has a frequency range of 4900 to 6200 MHz, providing stability over a wide bandwidth to support gigabit transmissions and has operating temperature ranging from -40 to 60°C . This antenna has an 23 dBi high gain, which describes electrical power conversion capability.

The L-com HG4958-23DP flat panel antenna has a type N female connector capable of carrying microwave frequencies used to join coaxial cables. This point-to-point antenna has a 50 Ohms impedance and is highly directional, which means it receives greater power in a specific direction. This antenna features dual slant (V/H or $\pm 45^\circ$) polarization, which makes them compatible with any single or dual polarized 2 x 2 MIMO radio and eliminates the risk of link strength degradation due to polarization mismatch.

L-com HG4958-23DP white flat panel antenna has a maximum input VSWR of 1.7:1. It has 100 W maximum power per port within which it has the ability to perform without damage. This antenna has dc ground lightning protection to protect the system from damage due to lightning strikes. This high-performance 23 dBi Wi-Fi 6 antenna is ideal for indoor or outdoor, point to point data links (PtP), point to multi-point data links (PtMP), Wi-Fi 5, Wi-Fi 6, unlicensed 5GHz and 6GHz bands, 5G bands - n46, n47, n96, n102, 2x2 MIMO capability and, high speed internet access applications.

L-com has one of the largest in-stock collections of antennas with our wide selection of superior quality RF parts, that ship same day. Make your online purchase right now to take advantage of our same-day shipping. For further information on similar products, our expert technical support and knowledgeable sales team can help you get the ideal single band MIMO flat panel antenna as per your requirement.

Configuration

Design	Flat Panel
Band Type	Single
Radiation Pattern	Directional
Polarization	H/V or 45 Deg. Slant
Connector Type	N Female
Number of Ports	2
Lightning Protection	DC Gounded

Click the following link (or enter part number in "SEARCH" on website) to obtain additional part information including price, inventory and certifications:
[Flat Panel Antenna, 4900 to 6200 MHz, 23 dBi, 2 x 2 MIMO, N Female, H/V or 45 Deg. Slant HG4958-23DP](#)

Flat Panel Antenna, 4900 to 6200 MHz, 23 dBi, 2 x 2 MIMO, N Female, H/V or 45 Deg. Slant



HG4958-23DP

Electrical Specifications

Description	Minimum	Typical	Maximum	Units
Frequency Range	4,900		6,200	MHz
Input VSWR			1.7:1	
Impedance		50		Ohms
Gain		23		dBi
Front to Back Ratio	23			dB
Horizontal (Azimuth) HPBW		12		Degrees
Vertical (Elevation) HPBW		12		Degrees
Input Power			100	Watts

Mechanical Specifications

Radome Material	UABS
Size	
Length	12.01 in [305.05 mm]
Width	12.01 in [305.05 mm]
Height	1.69 in [42.93 mm]
Mounting Mast Diameter	1.1811 to 2.16535 in [30.00 to 55.00 mm]
Weight	22.25 lbs [10.09 kg]

Environmental Specifications

Temperature	
Operating Range	-40 to +60 deg C
Environment	Waterproof
Wind Survivability	124.274 MPH [200 KPH]
Ingress Protection	IP-65

Compliance Certifications (see [product page](#) for current document)

Plotted and Other Data

Notes:

Flat Panel Antenna, 4900 to 6200 MHz, 23 dBi, 2 x 2 MIMO, N Female, H/V or 45 Deg. Slant from L-com has same day shipment for domestic and International orders. Our portfolio includes coaxial cable assemblies, connectors, adapters and custom products as well as lightning and surge protectors, NEMA rated enclosures, and an RF product line which includes antennas, amplifiers, passive, and

Flat Panel Antenna, 4900 to 6200 MHz, 23 dBi, 2 x
2 MIMO, N Female, H/V or 45 Deg. Slant

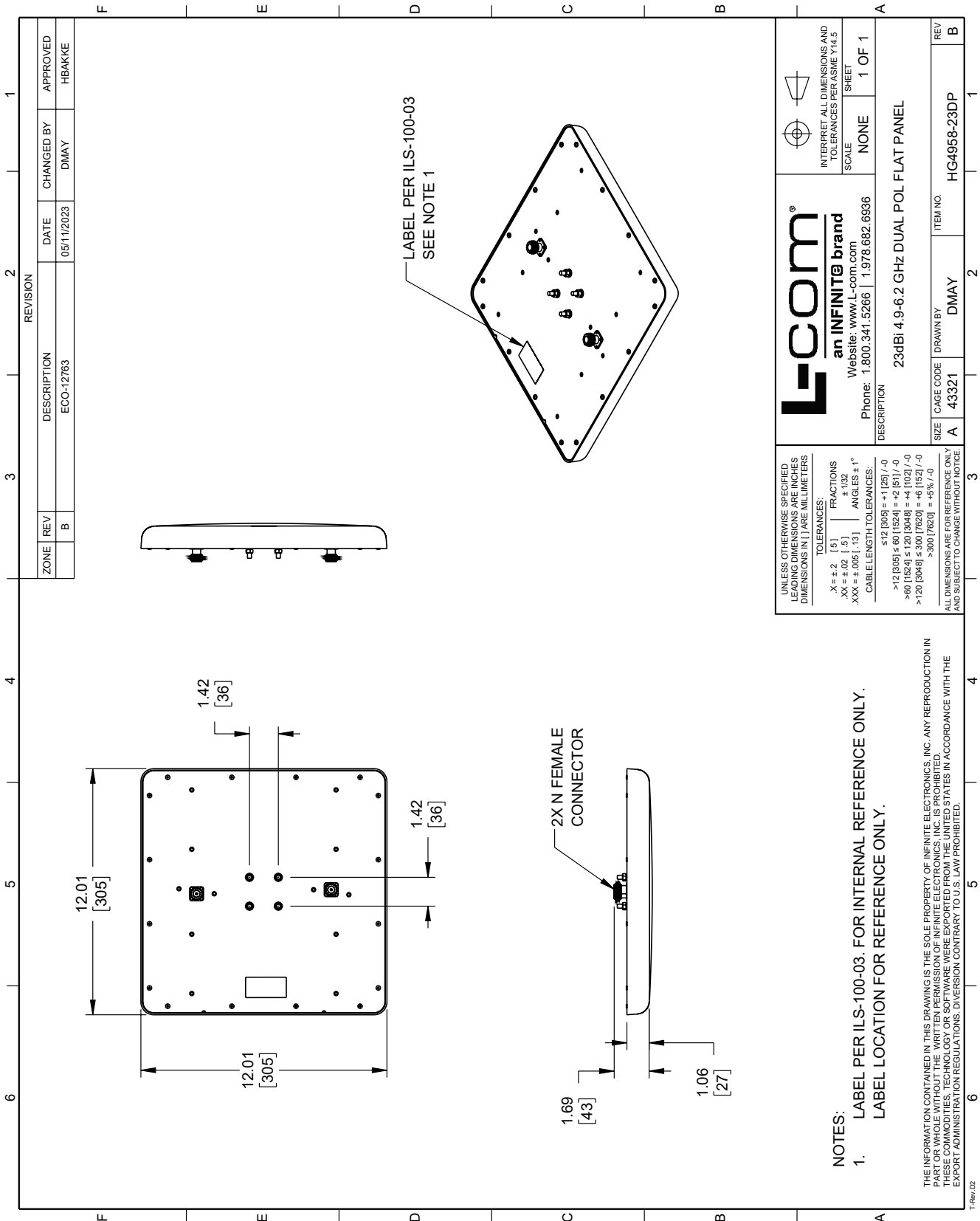


HG4958-23DP

active components.

The information contained within this document is accurate to the best of our knowledge and representative of the part described herein. It may be necessary to make modifications to the part and/or the documentation of the part in order to implement improvements. L-com reserves the right to make such changes as required. Unless otherwise stated, all specifications are nominal. L-com does not make any representation or warranty regarding the suitability of the part described herein for any particular purpose, and L-com does not assume liability arising out of the use of any part or document.

L-com CAD Drawing



ZONE		REVISION	
REV	DESCRIPTION	DATE	CHANGED BY
B	ECO-12763	05/11/2023	DMAY
			APPROVED
			HBAKKE

L-com
an INFINITE brand
Website: www.L-com.com
Phone: 1.800.341.5266 | 1.978.682.6936

INTERPRET ALL DIMENSIONS AND TOLERANCES PER ASME Y14.5
SCALE NONE 1 OF 1 SHEET

DESCRIPTION: 23dBi 4.9-6.2 GHz DUAL POL FLAT PANEL

REV	ITEM NO.
B	HG4958-23DP

SIZE	CAGE CODE	DRAWN BY
A	43321	DMAY

UNLESS OTHERWISE SPECIFIED, LEADING DIMENSIONS ARE INCHES DIMENSIONS IN [] ARE MILLIMETERS

TOLERANCES:

X = ±.2	[.5]	FRACTIONS
XX = ±.02	[.5]	+1/32
XXX = ±.005	[.13]	ANGLES ±1°

CABLE LENGTH TOLERANCES:

≤12 [305]	±.001 [25.4] / -0
>.60 [152.4] ≤.60 [152.4]	±.002 [51] / -0
>.60 [152.4] ≤.120 [3048]	±.003 [76.2] = +6 [152] / -0
>.120 [3048]	±.005 [127] = +5% / -0

ALL DIMENSIONS ARE FOR REFERENCE ONLY AND SUBJECT TO CHANGE WITHOUT NOTICE

NOTES:

- LABEL PER ILS-100-03. FOR INTERNAL REFERENCE ONLY. LABEL LOCATION FOR REFERENCE ONLY.

THE INFORMATION CONTAINED IN THIS DRAWING IS THE SOLE PROPERTY OF INFINITE ELECTRONICS, INC. ANY REPRODUCTION IN PART OR WHOLE WITHOUT THE WRITTEN PERMISSION OF INFINITE ELECTRONICS, INC. IS PROHIBITED. THESE COMMODITIES, TECHNOLOGY OR SOFTWARE WERE EXPORTED FROM THE UNITED STATES IN ACCORDANCE WITH THE EXPORT ADMINISTRATION REGULATIONS. DIVERSION CONTRARY TO U.S. LAW PROHIBITED.

T-Rev: 02