

Indoor DAS Panel Antenna, 7/10 dBi gain, 2 x 617-960 MHz / 1695 -2700 MHz & 2 x 3300-6000 MHz, N-Female



HG658710XXPPR-NF

Features

- Indoor distribution of 5G, LTE, GSM/CDMA
- In-building public or private networks
- LPWAN, LoRA, LTE-M, NB-IoT, IoT, M2M applications
- DAS (Distributed Antenna Systems)

Applications

- Low Passive Intermodulation (PIM) <-153 dBc @ 2x20W
- Vertical Polarization
- Low return loss, stable performance
- 4 x N-Female connector
- Covers all sub 6 GHz 5G frequency bands including 600 MHz and extended CBRS

Description

L-Com's Indoor DAS Panel Antenna HG658710XXPPR-NF is in stock and ready to ship the same-day of order. The HG658710XXPPR-NF indoor panel antenna comes with 7/10dBi gain and N female connectors. This indoor DAS panel omni antenna has a wide band frequency range from 617 MHz to 6000 MHz and is connectorized with 2 x 617-960 MHz / 1710-2700 MHz 2 x 3300-6000 MHz ranges. The 4 port capabilities increase the 5G data speeds up to 4 x that of a single antenna. L-Com's N female increases the throughput, data speeds, quality of connection and allows more users to connect to the antenna.

Our antenna specialists are ready and available to answer any questions you may have on the HG658710XXPPR-NF indoor DAS panel antenna. This indoor wall antenna has a low PIM rating and low-loss pigtailed with 80/75 and 60/60 degree horizontal beamwidths and 70/60 and 35/35 degree vertical beamwidths that provide installation flexibility. The 7/10dBi panel antenna low profile designs allow for seamless installation indoors without creating eyesores or potential interference with indoor personnel. These indoor panel antennas have low loss pigtailed that allows for installation flexibility.

Contact L-Com's expert technical support for assistance with the indoor DAS panel antenna or any Antenna. Our knowledgeable sales team simplifies the purchasing process and ensures that your panel antenna will be exact to specification.

The antenna HG658710XXPPR-NF from L-Com provides a higher quality connection and improved longevity. Order your 4-port Indoor DAS Panel Antenna HG658710XXPPR-NF from L-Com today. There is no MOQ (minimum order quantity) and the product ships same day from our warehouse.

Configuration

Design	Panel
Band Type	Wide
Radiation Pattern	Directional
Polarization	45 Deg. Slant
Connector Type	N Female
Interface 2	N Female
Interface 3	N Female
Interface 4	N Female
Number of Ports	4

Electrical Specifications

Description	Minimum	Typical	Maximum	Units
-------------	---------	---------	---------	-------

Click the following link (or enter part number in "SEARCH" on website) to obtain additional part information including price, inventory and certifications: [Indoor DAS Panel Antenna, 7/10 dBi gain, 2 x 617-960 MHz / 1695 -2700 MHz & 2 x 3300-6000 MHz, N-Female HG658710XXPPR-NF](#)

Indoor DAS Panel Antenna, 7/10 dBi gain, 2 x 617-960 MHz / 1695 -2700 MHz & 2 x 3300-6000 MHz, N-Female



HG658710XXPPR-NF

Frequency Range	617	6,000	MHz
Input VSWR		1.7:1	
Impedance	50		Ohms
Gain	6.5	10.5	dBi
Input Power		100	Watts
Passive Intermodulation 3rd order, 2 x 20 W		-153	dBc

Specifications by Band

Description	Band 1	Band 2	Band 3	Band 4	Band 5	Units
Range	0.617 to 0.96	1.695 to 2.7	3.3 to 4	4.8 to 6		GHz
Gain	6.5	7	10.5	10.5		dBi
Horizontal HPBW	80	75	60	60		Degrees
Vertical HPBW	70	60	35	35		Degrees
Port to Port Isolation	20	20	23	23		dB
Front to Back Ratio	15	20	25	20		dB
VSWR Max	1.7:1	1.7:1	1.7:1	1.7:1		

Mechanical Specifications

Radome Material	ABS
Size	
Length	12.126 in [308 mm]
Width	16.5354 in [420 mm]
Height	3.22835 in [82 mm]
Weight	3.52 lbs [1.6 kg]

Environmental Specifications

Temperature	
Operating Range	-55 to +60 deg C
Humidity	100

Compliance Certifications (see [product page](#) for current document)

Plotted and Other Data

Notes:

Indoor DAS Panel Antenna, 7/10 dBi gain, 2 x 617-960 MHz
/ 1695 -2700 MHz & 2 x 3300-6000 MHz, N-Female



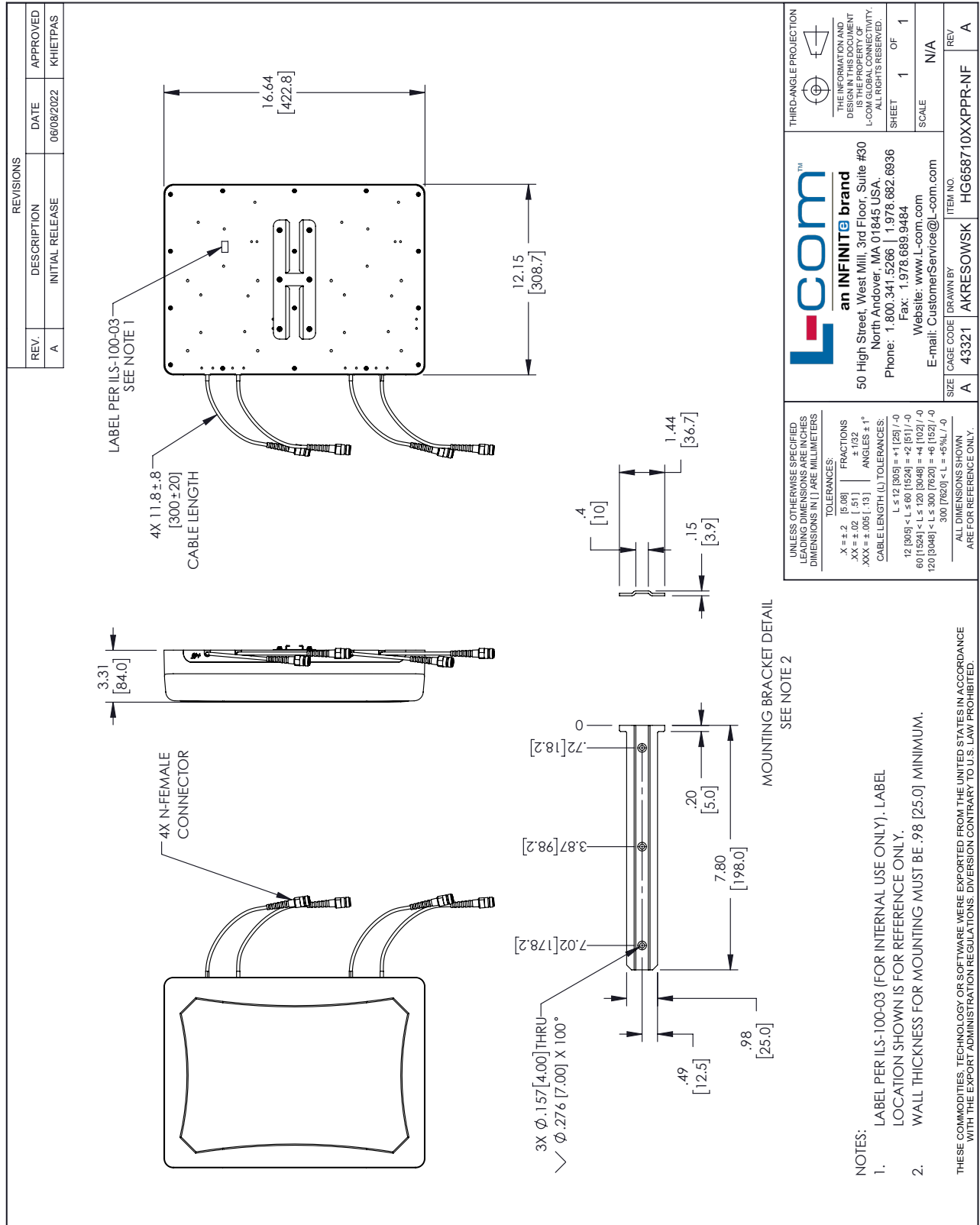
HG658710XXPPR-NF

Indoor DAS Panel Antenna, 7/10 dBi gain, 2 x 617-960 MHz / 1695 -2700 MHz & 2 x 3300-6000 MHz, N-Female from L-com has same day shipment for domestic and International orders. Our portfolio includes coaxial cable assemblies, connectors, adapters and custom products as well as lightning and surge protectors, NEMA rated enclosures, and an RF product line which includes antennas, amplifiers, passive, and active components.

The information contained within this document is accurate to the best of our knowledge and representative of the part described herein. It may be necessary to make modifications to the part and/or the documentation of the part in order to impliment improvements. L-com reserves the right to make such changes as required. Unless otherwise stated, all specifications are nominal. L-com does not make any representation or warranty regarding the suitability of the part described herein for any particular purpose, and L-com does not assume liability arising out of the use of any part or document.

Indoor DAS Panel Antenna, 7/10 dBi gain, 2 x 617-960 MHz / 1695
 -2700 MHz & 2 x 3300-6000 MHz, N-Female

L-com CAD Drawing



L-com™
 an INFINITE brand
 50 High Street, West Mill, 3rd Floor, Suite #30
 North Andover, MA 01845 USA
 Phone: 1.800.341.5266 | 1.978.682.6936
 Fax: 1.978.689.9484
 Website: www.L-com.com
 E-mail: CustomerService@L-com.com

THIRD-ANGLE PROJECTION

THE INFORMATION AND DIMENSIONS SHOWN HEREIN IS THE PROPERTY OF L-COM GLOBAL CONNECTIVITY. ALL RIGHTS RESERVED.
 SHEET 1 OF 1
 SCALE N/A

UNLESS OTHERWISE SPECIFIED LEADING DIMENSIONS ARE IN INCHES DIMENSIONS IN [] ARE MILLIMETERS

TOLERANCES:
 .X = ± .2 [5.08] FRACTIONS ± 1/32
 .XX = ± .02 [.51] ANGLES ± 1°
 .XXX = ± .005 [.13]
 CABLE LENGTH (L) TOLERANCES:
 L ≤ 12 [305] < L ≤ 60 [1524] = ± 1 [25] / -0
 60 [1524] < L ≤ 120 [3048] = ± 4 [102] / -0
 120 [3048] < L ≤ 300 [7620] = ± 6 [152] / -0
 300 [7620] < L = +5% / -0

ALL DIMENSIONS SHOWN ARE FOR REFERENCE ONLY.

ITEM NO. HG658710XXPPR-NF
 DRAWN BY AKRESOWSK
 SIZE A
 CAGE CODE 43321

- NOTES:
- LABEL PER ILS-100-03 (FOR INTERNAL USE ONLY). LABEL LOCATION SHOWN IS FOR REFERENCE ONLY.
 - WALL THICKNESS FOR MOUNTING MUST BE .98 [25.0] MINIMUM.
- THESE COMMODITIES, TECHNOLOGY OR SOFTWARE WERE EXPORTED FROM THE UNITED STATES IN ACCORDANCE WITH THE EXPORT ADMINISTRATION REGULATIONS. DIVERSION CONTRARY TO U.S. LAW PROHIBITED.