

Embedded 700-2700 MHz PCB Antenna, 2.5 dBi gain, IPEX Connector



HG827-03PU-100IPEX

Features

- Highly efficient printed circuit board (PCB) design
- Designed for omni-directional applications
- Low profile, compact size
- IPEX connector
- Receives 1575 MHz GPS

Applications

- Integrate into self contained wireless equipment
- Embedded applications requiring integration flexibility
- Multiband cellular frequencies

Description

The HG827-03PU-100IPEX is a multiband omnidirectional antenna designed to integrate into devices requiring wireless capability. By embedding these antennas directly into a device, the need for external antennas is eliminated. The omni-directional radiation pattern makes it ideal for multipoint and mobile wireless systems.

Configuration

Cable Type	1.13mm
Connector Type	IPEX

Electrical Specifications

Description	Minimum	Typical	Maximum	Units
Input VSWR			2:01	
Impedance		50		Ohms
Gain			3	

Specifications by Band

Description	Band 1	Band 2	Band 3	Band 4	Band 5	Units
Range	704-960	1,574-1,576	1,710-2,200	2,496-2,690		MHz

Mechanical Specifications

Size

Length	3.874016 in [98.4 mm]
Width	0.5866142 in [14.9 mm]
Height	0.0314961 in [0.8 mm]

Click the following link (or enter part number in "SEARCH" on website) to obtain additional part information including price, inventory and certifications:
[Embedded 700-2700 MHz PCB Antenna, 2.5 dBi gain, IPEX Connector HG827-03PU-100IPEX](#)

Embedded 700-2700 MHz PCB Antenna, 2.5 dBi gain, IPEX Connector

HG827-03PU-100IPEX



Environmental Specifications

Temperature

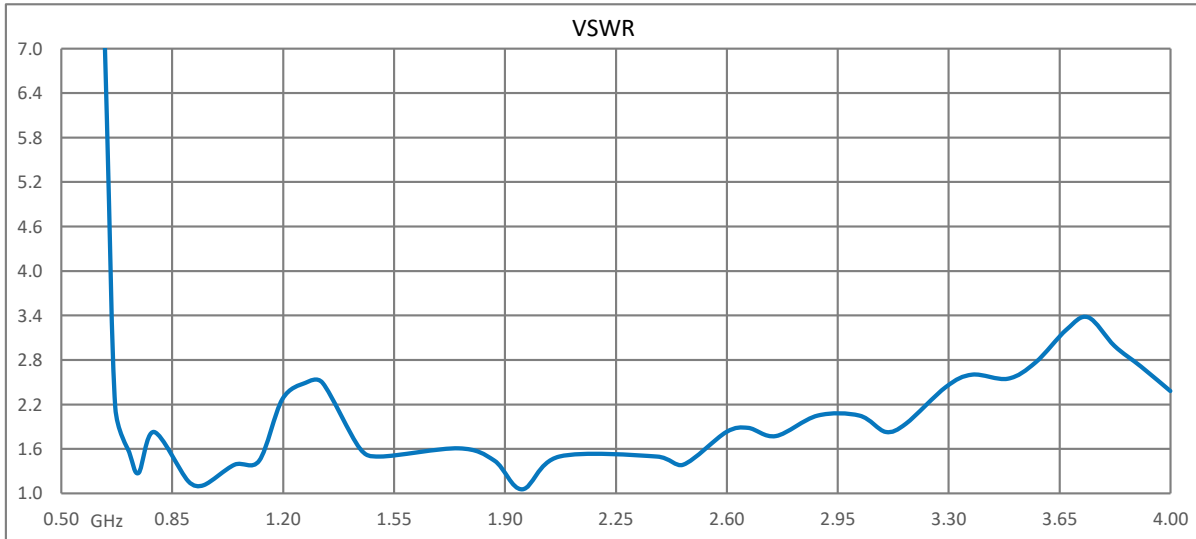
Operating Range

-20 to +65 deg C

Compliance Certifications (see [product page](#) for current document)

Plotted and Other Data

Notes:

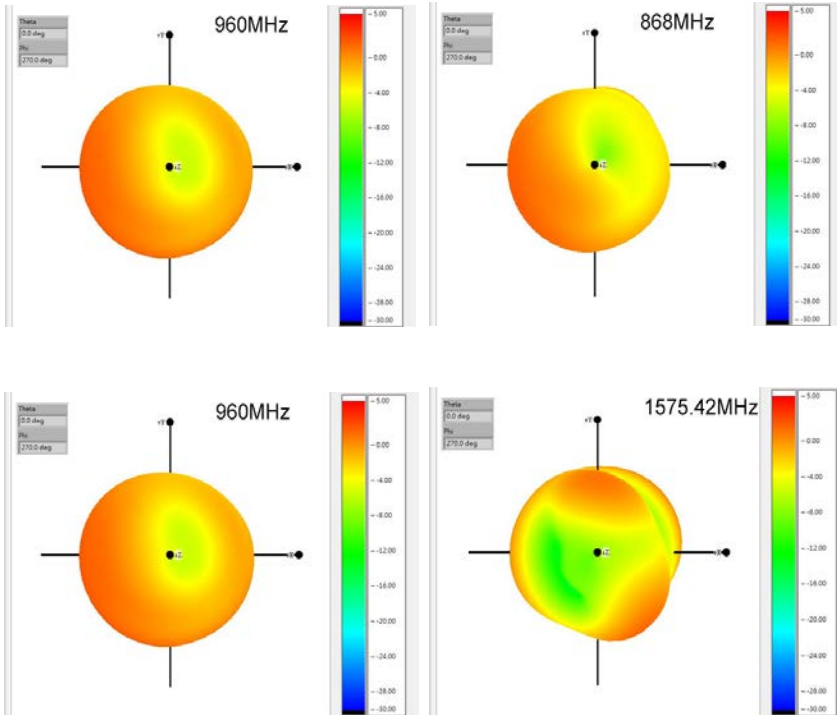


Embedded 700-2700 MHz PCB Antenna, 2.5 dBi gain, IPEX Connector



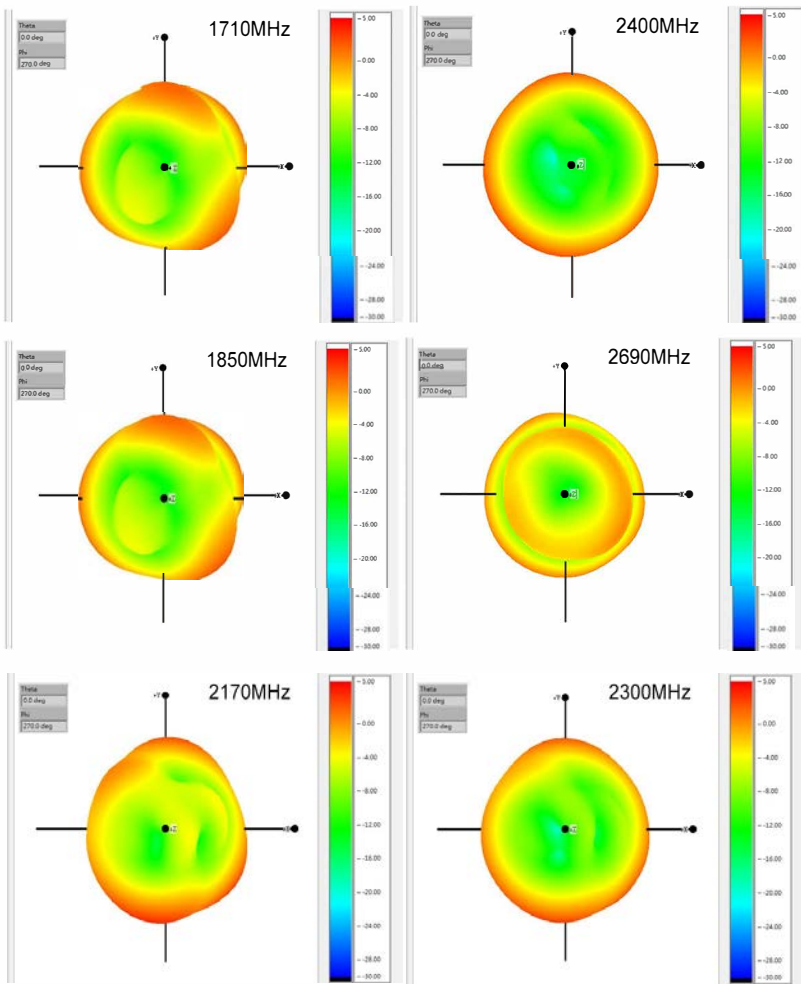
HG827-03PU-100IPEX

Frequency (MHz)	704	868	960	1575.42	1710	1850	2170	2300	2400	2690
Peak Gain (dBi)	1.25	2.42	2.31	2.22	2.41	2.46	2.39	2.35	2.29	2.31
Efficiency (%)	53.91	51.02	50.49	55.21	61.01	61.54	61.32	61.44	61.01	61.09



Embedded 700-2700 MHz PCB Antenna, 2.5 dBi gain, IPEX Connector

HG827-03PU-100IPEX



Embedded 700-2700 MHz PCB Antenna, 2.5 dBi gain, IPEX Connector from L-com has same day shipment for domestic and

Embedded 700-2700 MHz PCB Antenna, 2.5 dBi gain, IPEX Connector

HG827-03PU-100IPEX

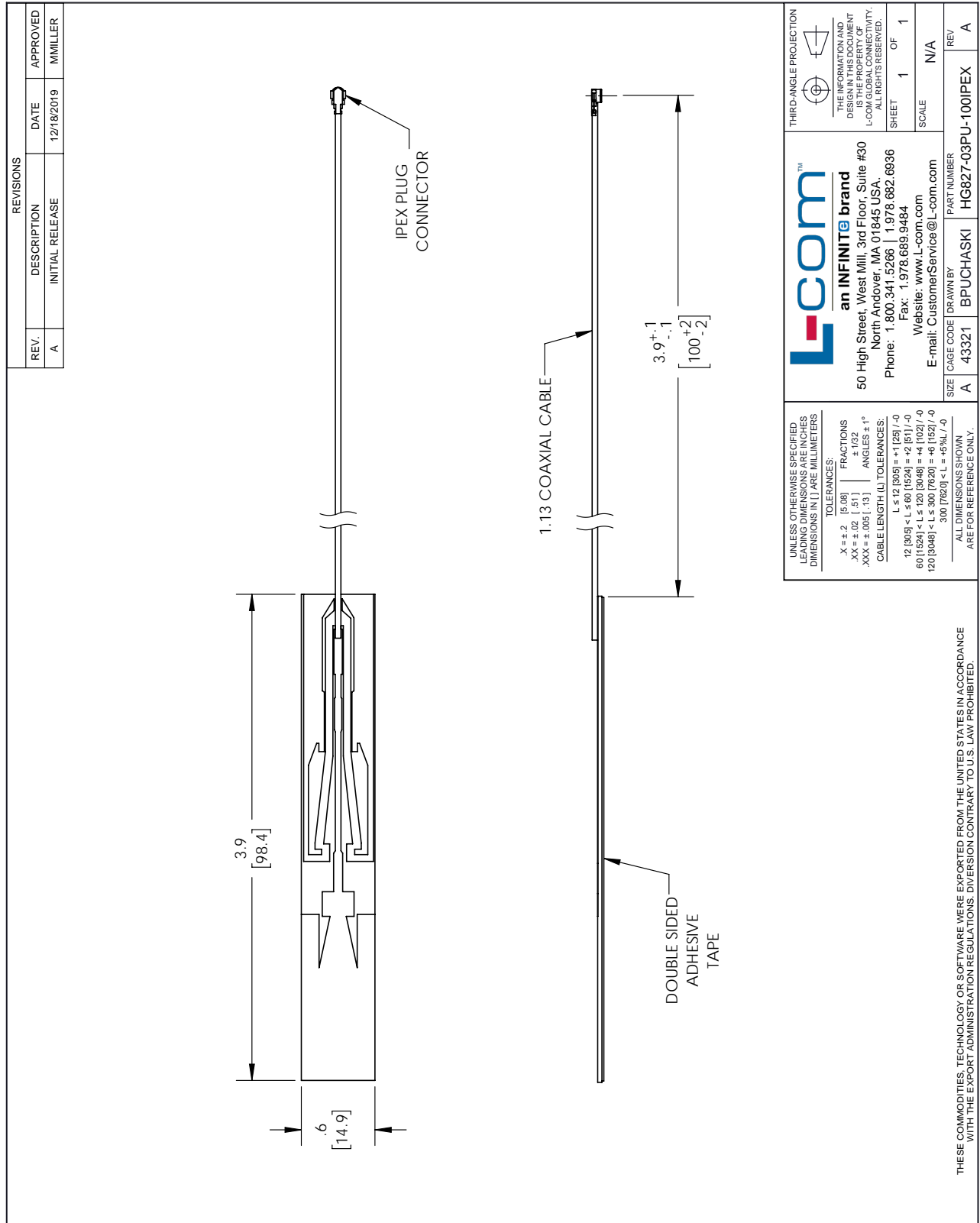


International orders. Our portfolio includes coaxial cable assemblies, connectors, adapters and custom products as well as lightning and surge protectors, NEMA rated enclosures, and an RF product line which includes antennas, amplifiers, passive, and active components.

The information contained within this document is accurate to the best of our knowledge and representative of the part described herein. It may be necessary to make modifications to the part and/or the documentation of the part in order to impliment improvements. L-com reserves the right to make such changes as required. Unless otherwise stated, all specifications are nominal. L-com does not make any representation or warranty regarding the suitability of the part described herein for any particular purpose, and L-com does not assume liability arising out of the use of any part or document.

Embedded 700-2700 MHz PCB Antenna, 2.5 dBi gain, IPEX Connector

L-com CAD Drawing



UNLESS OTHERWISE SPECIFIED LEADING DIMENSIONS ARE IN INCHES DIMENSIONS IN [] ARE IN MILLIMETERS

TOLERANCES:

.X = ±.2 [5.08]	FRACTIONS ± 1/32	THIRD-ANGLE PROJECTION
.XX = ±.02 [1.51]	ANGLES ± 1°	THE INFORMATION AND DIMENSIONS SHOWN ARE THE PROPERTY OF L-COM GLOBAL CONNECTIVITY. ALL RIGHTS RESERVED.
.XXX = ±.005 [1.13]	CABLE LENGTH (L) TOLERANCES:	SHEET 1 OF 1
	L ≤ 12 [305] = ±1 [25] / -0	SCALE N/A
	12 [305] < L ≤ 60 [1524] = ±2 [51] / -0	
	60 [1524] < L ≤ 120 [3048] = ±4 [102] / -0	
	120 [3048] < L ≤ 300 [7620] = ±6 [152] / -0	
	300 [7620] < L = +5%L / -0	

ALL DIMENSIONS SHOWN ARE FOR REFERENCE ONLY.

THESE COMMODITIES, TECHNOLOGY OR SOFTWARE WERE EXPORTED FROM THE UNITED STATES IN ACCORDANCE WITH THE EXPORT ADMINISTRATION REGULATIONS. DIVERSION CONTRARY TO U.S. LAW PROHIBITED.

T-Rev.D

L-com™
an INFINITE brand

50 High Street, West Mill, 3rd Floor, Suite #30
North Andover, MA 01845, USA.
Phone: 1.800.341.5266 | 1.978.682.6936
Fax: 1.978.689.9484
Website: www.L-com.com
E-mail: CustomerService@L-com.com

THIRD-ANGLE PROJECTION

THE INFORMATION AND DIMENSIONS SHOWN ARE THE PROPERTY OF L-COM GLOBAL CONNECTIVITY. ALL RIGHTS RESERVED.

SHEET 1 OF 1

SCALE N/A

SIZE	CAGE CODE	DRAWN BY	PART NUMBER	REV
A	43321	BPUCHASKI	HG827-03PU-100IPEX	A