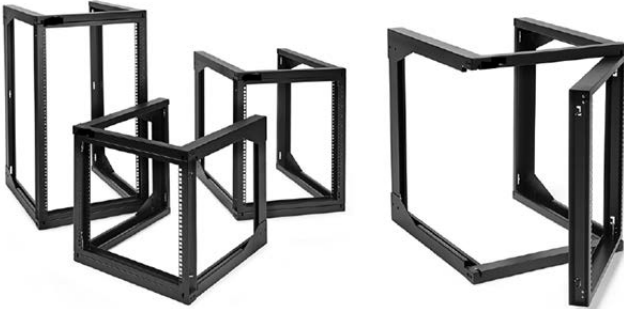


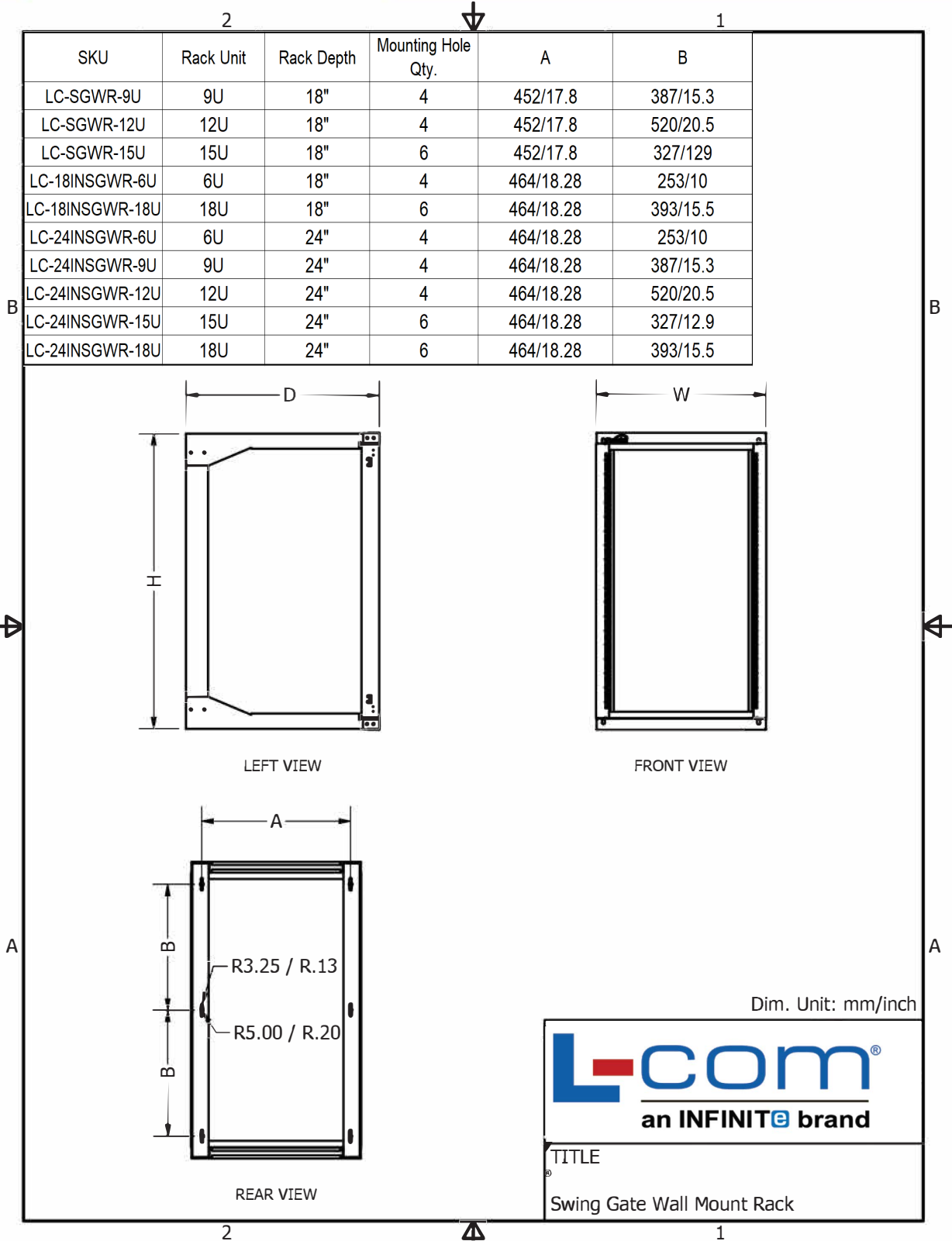
Swing Gate Wall-Mount Racks



Use space efficiently with the L-com Swing Gate Wall-Mounted Rack for your standard 19 inch servers and AV and networking equipment. The dual-hinged front swing gate easily opens 180 degrees for easy rear access to cables from either side. Spring-load pivot pins provide for either left or right hinging, so you can choose what works for your build.

Model / SKU Number	LC-SGWR-9U	LC-SGWR-12U	LC-SGWR-15U	LC-18INSGWR-6U	LC-18INSGWR-18U	LC-24INSGWR-6U	LC-24INSGWR-9U	LC-24INSGWR-12U	LC-24INSGWR-15U	LC-24INSGWR-18U	
PHYSICAL											
Rack Capacity (in Rack Units)	9U	12U	15U	6U	18U	6U	9U	12U	15U	18U	
Rack Depth (in)	18	18	18	18	18	24	24	24	24	24	
Unit Dimensions (in)	H	20.9	26.2	31.4	15.5	36.5	15.5	20.8	26	31	36.5
	W	20	20	20	20.8	20.8	20.8	20.8	20.8	20.8	20.8
	D	18	18	18	18	18	24	24	24	24	24
Weight Capacity (kg / lbs)	25 / 55	25 / 55	25 / 55	50 / 110	50 / 110	50 / 110	50 / 110	50 / 110	50 / 110	50 / 110	
Material	Cold Rolled Steel										
Painting / Coating	Black Powder Coating										
Construction	Bolted Assembly										
Rack Hole Type	Square and 12-24 Threaded	Square and 12-24 Threaded	Square and 12-24 Threaded	Square and 12-24 Threaded	Square and 12-24 Threaded	Square and 12-24 Threaded	Square and 12-24 Threaded	Square and 12-24 Threaded	Square and 12-24 Threaded	Square and 12-24 Threaded	
ADDITIONAL FEATURES											
Mounting	M6 Metal Washers (x4) M6 Wall Mounting Screws (x4)	M6 Metal Washers (x4) M6 Wall Mounting Screws (x4)	M6 Metal Washers (x4) M6 Wall Mounting Screws (x4)	M6 Metal Washers (x4) M6 Wall Mounting Screws (x4)	M6 Metal Washers (x4) M6 Wall Mounting Screws (x4)	M6 Metal Washers (x4) M6 Wall Mounting Screws (x4)	M6 Metal Washers (x4) M6 Wall Mounting Screws (x4)	M6 Metal Washers (x4) M6 Wall Mounting Screws (x4)	M6 Metal Washers (x4) M6 Wall Mounting Screws (x4)	M6 Metal Washers (x4) M6 Wall Mounting Screws (x4)	
Equipment Mounting Hardware	M6 Cage Screws (x10) M6 Cage Nuts (x10) M6 Cage Nuts (x10) 12-24 Screws (x10)	M6 Cage Screws (x10) M6 Cage Nuts (x10) M6 Cage Nuts (x10) 12-24 Screws (x10)	M6 Cage Screws (x10) M6 Cage Nuts (x10) M6 Cage Nuts (x10) 12-24 Screws (x10)	M6 Cage Screws (x10) M6 Cage Nuts (x10) M6 Cage Nuts (x10) 12-24 Screws (x10)	M6 Cage Screws (x10) M6 Cage Nuts (x10) M6 Cage Nuts (x10) 12-24 Screws (x10)	M6 Cage Screws (x10) M6 Cage Nuts (x10) M6 Cage Nuts (x10) 12-24 Screws (x10)	M6 Cage Screws (x10) M6 Cage Nuts (x10) M6 Cage Nuts (x10) 12-24 Screws (x10)	M6 Cage Screws (x10) M6 Cage Nuts (x10) M6 Cage Nuts (x10) 12-24 Screws (x10)	M6 Cage Screws (x10) M6 Cage Nuts (x10) M6 Cage Nuts (x10) 12-24 Screws (x10)	M6 Cage Screws (x10) M6 Cage Nuts (x10) M6 Cage Nuts (x10) 12-24 Screws (x10)	M6 Cage Screws (x10) M6 Cage Nuts (x10) M6 Cage Nuts (x10) 12-24 Screws (x10)
Swing Gate Access	✓										
Assembly	Assembly Required										
COMPLIANCE AND CERTIFICATIONS											
EIA/ECA-310-E	✓										
ROHS	✓										
CE	✓	✓	✓								
DIN 41494	✓										
IEC-60297-3-100	✓										
SHIPPING											
Shipping Dimensions (in)	L	21	26	31	21.625	38.5	25.375	25.375	28.875	34	39.25
	W	21	21	21	17.85	21.625	18.25	23.625	25.75	25.875	25.75
	H	7	7	7	5.25	5.25	5.25	5.25	5.25	5.25	5.25
Shipping Weight (lbs)	18.55	20.5	22.6	24.3	35.2	29.35	32.35	35.55	37.9	40.75	

Swing Gate Wall-Mount Racks



Swing Gate Wall-Mount Racks

