

1553 TRB 3-Slot Plug to TRB 3-Lug Jack Bulkhead Isolated Cable Assembly using M17/176-00002-LC Coax, 3 FT



LC3MP2290-36

Configuration

- Connector 1: TRB 3-Slot Plug
- Connector 2: TRB 3-Lug Jack Bulkhead Isolated
- Cable Type: M17-176-00002-LC

Features

- MIL-STD-1553
- -55°C to +200°C
- 78 ohms
- Isolated

Applications

- Vehicle High Temperature
- Data
- MIL-STD-1553

Description

L-com's LC3MP2290-36 is a 1553 TRB 3-Slot plug to TRB 3-Lug jack bulkhead isolated cable assembly using M17/176-00002-LC coax, 3 FT and ships same-day. These flexible RF cable assemblies are ideal for applications where flexure is required. Our L-com TRB 3-Slot to TRB 3-Lug cable assembly has a plug to jack gender configuration with 78 Ohm flexible M17-176-00002-LC series coax and operates to 10 MHz.

Custom versions of this TRB 3-Slot plug to TRB 3-Slot jack cable, along with the rest of L-com's other RF assemblies, can also be built and shipped same day. Other available RF cable assembly value added services from L-com include connector orientation or clocking, heat shrink booting and custom labeling. RF testing can also be performed to document the electrical performance of your cable assembly. Contact a sales representative for testing or custom RF cable quotes. Part number LC3MP2290-36 L-com 1553 TRB 3-Slot Plug to TRB 3-Lug Jack Bulkhead Isolated Cable Assembly using M17/176-00002-LC Coax, 3 FT data sheet PDF includes details of the RF product specifications, CAD drawing(s) and dimensions below.

Electrical Specifications

| Description | Minimum | Typical | Maximum | Units |
|------------------------|---------|------------|---------|--------------|
| Frequency Range | DC | | 10 | MHz |
| Capacitance | | 24 [78.74] | | pF/ft [pF/m] |
| Operating Voltage (AC) | | | 750,000 | Vrms |

Specifications by Frequency

| Description | F1 | F2 | F3 | F4 | F5 | Units |
|-----------------------|-------|-------|-------|-------|-------|-------|
| Frequency | 1 | 3 | 5 | 7 | 10 | MHz |
| Insertion Loss (Typ.) | 0.242 | 0.263 | 0.284 | 0.305 | 0.335 | dB |

Electrical Specification Notes:

The Insertion Loss data above is based on the performance specifications of the coax and connectors used in this assembly. The Insertion Loss includes an estimated insertion loss of 0.1 dB per connector.

1553 TRB 3-Slot Plug to TRB 3-Lug Jack Bulkhead Isolated Cable Assembly using M17/176-00002-LC Coax, 3 FT



LC3MP2290-36

Mechanical Specifications

Cable Assembly

| | |
|---------|----------------------|
| Length* | 36 in [914.4 mm] |
| Weight | 0.303 lbs [137.44 g] |

Cable

| | |
|--------------------------------------|----------------------|
| Cable Type | M17-176-00002-LC |
| Impedance | 78 Ohms |
| Inner Conductor Type | Stranded |
| Inner Conductor Material and Plating | Copper, Silver |
| Dielectric Type | PTFE |
| Shield Layer 1 | Silver Plated Copper |
| Jacket Material | PFA, Blue |

| | |
|------------------------------|------------------|
| One Time Minimum Bend Radius | 1.5 in [38.1 mm] |
|------------------------------|------------------|

Connectors

| Description | Connector 1 | Connector 2 |
|---------------------------------------|------------------------------|----------------------------------|
| Type | TRB 3-Slot Plug | TRB 3-Lug Jack Bulkhead Isolated |
| Impedance | 78 Ohms | 78 Ohms |
| Contact Material and Plating | Bronze, Gold 30 micro inches | Bronze, Gold 30 micro inches |
| Contact Plating Specification | ASTM-B-488 | ASTM-B-488 |
| Dielectric Type | Teflon | Teflon |
| Outer Conductor Material and Plating | Phosphor Bronze, Gold | Phosphor Bronze, Gold |
| Outer Conductor Plating Specification | 30 micro inches | 30 micro inches |
| Body Material and Plating | Brass, Nickel | Brass, Nickel |
| Body Plating Specification | ASTM-B-733 | ASTM-B-733 |

Environmental Specifications

Temperature

| | |
|-----------------|-------------------|
| Operating Range | -55 to +200 deg C |
|-----------------|-------------------|

Compliance Certifications (see [product page](#) for current document)

Plotted and Other Data

Notes:

1553 TRB 3-Slot Plug to TRB 3-Lug Jack Bulkhead Isolated Cable Assembly using M17/176-00002-LC Coax, 3 FT



LC3MP2290-36

How to Order

Part Number Configuration:

LC3MP2290 - xx uu



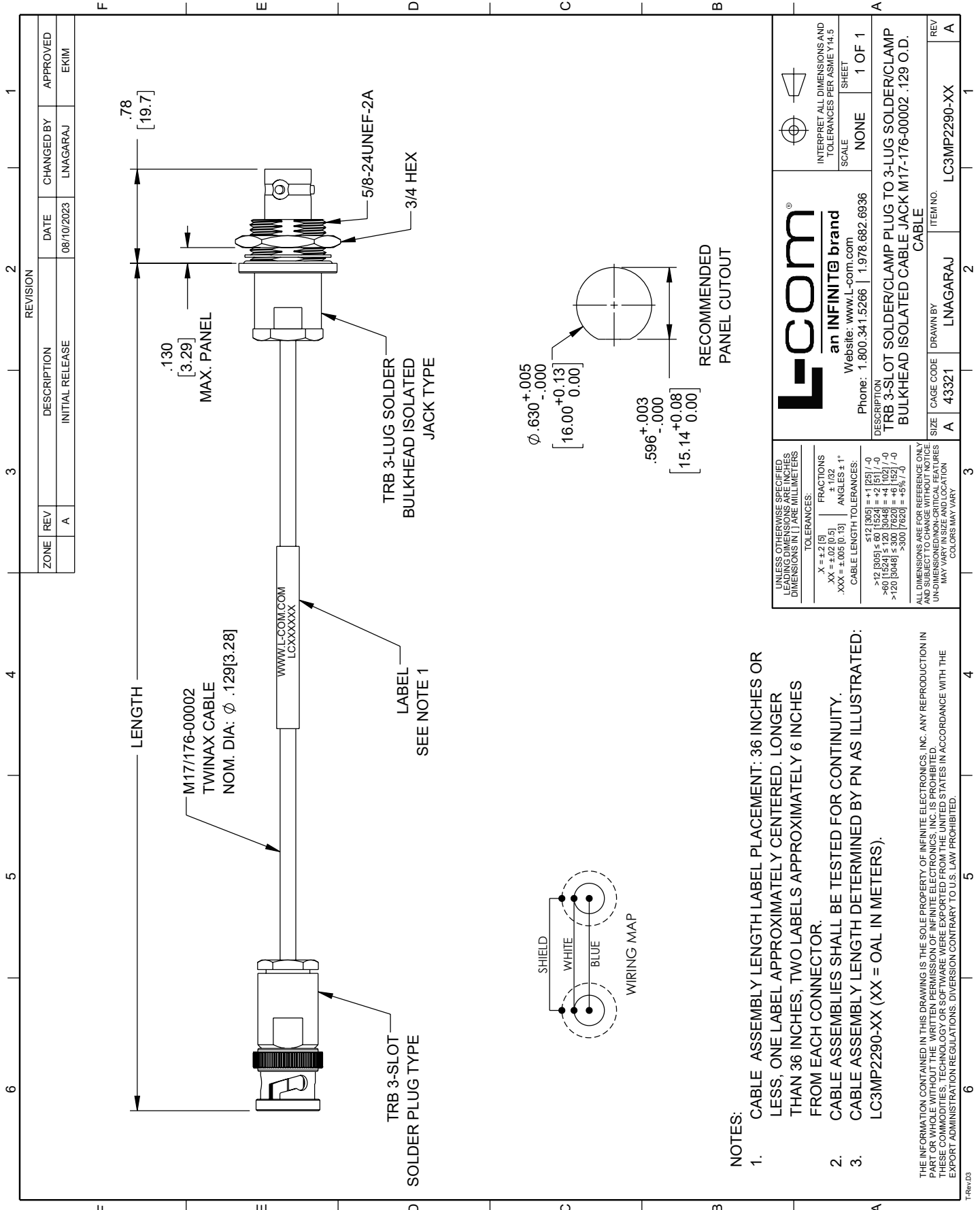
Example: LC3MP2290-12 = 12 inches long cable
LC3MP2290-100cm = 100 cm long cable

1553 TRB 3-Slot Plug to TRB 3-Lug Jack Bulkhead Isolated Cable Assembly using M17/176-00002-LC Coax, 3 FT from L-com has same day shipment for domestic and International orders. L-com is a leading manufacturer of wired and wireless connectivity products and committed to in-stock availability and same day shipping. Our portfolio includes coaxial cable assemblies, connectors, adapters and custom products as well as lightning and surge protectors, NEMA rated enclosures, and an RF product line which includes antennas, amplifiers, passive, and active components.

The information contained within this document is accurate to the best of our knowledge and representative of the part described herein. It may be necessary to make modifications to the part and/or the documentation of the part in order to impliment improvements. L-com reserves the right to make such changes as required. Unless otherwise stated, all specifications are nominal. L-com does not make any representation or warranty regarding the suitability of the part described herein for any particular purpose, and L-com does not assume liability arising out of the use of any part or document.ontained within this document is accurate to the best of our knowledge and representative of the part described herein. It may be necessary to make modifications to the part and/or the documentation of the part in order to impliment improvements. L-com reserves the right to make such changes as required. Unless otherwise stated, all specifications are nominal. L-com does not make any representation or warranty regarding the suitability of the part described herein for any particular purpose, and L-com does not assume liability arising out of the use of any part or document.

1553 TRB 3-Slot Plug to TRB 3-Lug Jack Bulkhead Isolated Cable Assembly using M17/176-0002-LC Coax, 3 FT

L-com CAD Drawing



NOTES:

1. CABLE ASSEMBLY LENGTH LABEL PLACEMENT: 36 INCHES OR LESS, ONE LABEL APPROXIMATELY CENTERED. LONGER THAN 36 INCHES, TWO LABELS APPROXIMATELY 6 INCHES FROM EACH CONNECTOR.
2. CABLE ASSEMBLIES SHALL BE TESTED FOR CONTINUITY.
3. CABLE ASSEMBLY LENGTH DETERMINED BY PN AS ILLUSTRATED: LC3MP2290-XX (XX = OAL IN METERS).

THE INFORMATION CONTAINED IN THIS DRAWING IS THE SOLE PROPERTY OF INFINITE ELECTRONICS, INC. ANY REPRODUCTION IN PART OR WHOLE WITHOUT THE WRITTEN PERMISSION OF INFINITE ELECTRONICS, INC. IS PROHIBITED. THESE COMMODITIES, TECHNOLOGY OR SOFTWARE WERE EXPORTED FROM THE UNITED STATES IN ACCORDANCE WITH THE EXPORT ADMINISTRATION REGULATIONS. DIVERSION CONTRARY TO U.S. LAW PROHIBITED.

| | | | | |
|--|--|---|--|--|
| UNLESS OTHERWISE SPECIFIED, DIMENSIONS ARE IN INCHES. DIMENSIONS IN PARENTHESES ARE IN MILLIMETERS. | | L-com® an INFINITE brand Website: www.l-com.com Phone: 1.800.341.5266 1.978.682.6936 | | INTERPRET ALL DIMENSIONS AND TOLERANCES PER ASME Y14.5 |
| TOLERANCES: | | FRACTIONS | | SCALE |
| .X = ±.2 [5] | | ±.132 | | NONE |
| .XX = ±.02 [0.5] | | ANGLES ± 1° | | SHEET 1 OF 1 |
| .XXX = ±.005 [0.13] | | CABLE LENGTH TOLERANCES: | | |
| | | ≤12 [305] = ±1 [25] / -0 | | |
| | | >12 [305] ≤ 60 [1524] = ±2 [51] / -0 | | |
| | | 60 [1524] ≤ 300 [7620] = ±4 [102] / -0 | | |
| | | >300 [7620] = ±5% / -0 | | |
| ALL DIMENSIONS ARE FOR REFERENCE ONLY. UNLESS OTHERWISE SPECIFIED, DIMENSIONS ARE IN INCHES. DIMENSIONS IN PARENTHESES ARE IN MILLIMETERS. | | CAGE CODE | | REV |
| | | A 43321 | | A |
| | | DRAWN BY | | ITEM NO. |
| | | LNAGARAJ | | LC3MP2290-XX |