

TRB 3-Slot Full Crimp Plug with Blunt Cut for 78 Ohm 30-2003-LC, 48" Cable



**LC3MP2358-48**

**Configuration**

- Connector 1: TRB 3-Slot Plug
- Connector 2: Blunt Cut Genderless
- Cable Type: 30-2003-LC

**Features**

- MIL-STD-1553
- -20°C to +75°C
- 78 ohms

**Applications**

- MIL-STD-1553
- Data

**Description**

L-com's LC3MP2358-48 is a TRB 3-Slot full crimp plug with blunt cut for 78 Ohm 30-2003-LC, 48" cable and ships same-day. These flexible RF cable assemblies are ideal for applications where flexure is required. Our L-com TRB 3-Slot to Blunt Cut cable assembly has a plug to genderless gender configuration with 78 Ohm flexible 30-2003-LC series coax and operates to 500 MHz.

Custom versions of this TRB 3-Slot plug to TRB 3-Slot genderless cable, along with the rest of L-com's other RF assemblies, can also be built and shipped same day. Other available RF cable assembly value added services from L-com include connector orientation or clocking, heat shrink booting and custom labeling. RF testing can also be performed to document the electrical performance of your cable assembly. Contact a sales representative for testing or custom RF cable quotes. Part number LC3MP2358-48 L-com TRB 3-Slot Full Crimp Plug with Blunt Cut for 78 Ohm 30-2003-LC, 48" Cable data sheet PDF includes details of the RF product specifications, CAD drawing(s) and dimensions below.

**Electrical Specifications**

Description	Minimum	Typical	Maximum	Units
Frequency Range	DC		500	MHz
Capacitance		20.3 [66.6]		pF/ft [pF/m]
Operating Voltage (AC)			300	Vrms

**Specifications by Frequency**

Description	F1	F2	F3	F4	F5	Units
Frequency	10	50	100	200	500	MHz

Insertion Loss (Typ.)

**Mechanical Specifications**

**Cable Assembly**

- Length\* 48 in [121.92 cm]
- Weight 0.176 lbs [79.83 g]

TRB 3-Slot Full Crimp Plug with Blunt Cut for 78 Ohm 30-2003-LC, 48" Cable



**LC3MP2358-48**

**Cable**

Cable Type	30-2003-LC
Impedance	78 Ohms
Inner Conductor Type	Stranded
Inner Conductor Material and Plating	Copper, Silver
Dielectric Type	PE
Shield Layer 1	Silver Plated Copper
Jacket Material	PVC, Blue
One Time Minimum Bend Radius	1.5 in [38.1 mm]

**Connectors**

Description	Connector 1	Connector 2
Type	TRB 3-Slot Plug	Blunt Cut Genderless
Impedance	78 Ohms	
Contact Material and Plating	Bronze, Gold 30 micro inches	
Contact Plating Specification	ASTM-B-488	
Dielectric Type	Teflon	
Outer Conductor Material and Plating	Phosphor Bronze, Gold	
Outer Conductor Plating Specification	30 micro inches	
Body Material and Plating	Brass, Nickel	
Body Plating Specification	ASTM-B-733	

**Environmental Specifications**

**Temperature**

Operating Range	-20 to +75 deg C
-----------------	------------------

**Compliance Certifications** (see [product page](#) for current document)

**Plotted and Other Data**

Notes:

TRB 3-Slot Full Crimp Plug with Blunt Cut for 78 Ohm 30-2003-LC, 48" Cable



## LC3MP2358-48

### How to Order

Part Number Configuration:

**LC3MP2358 - xx uu**

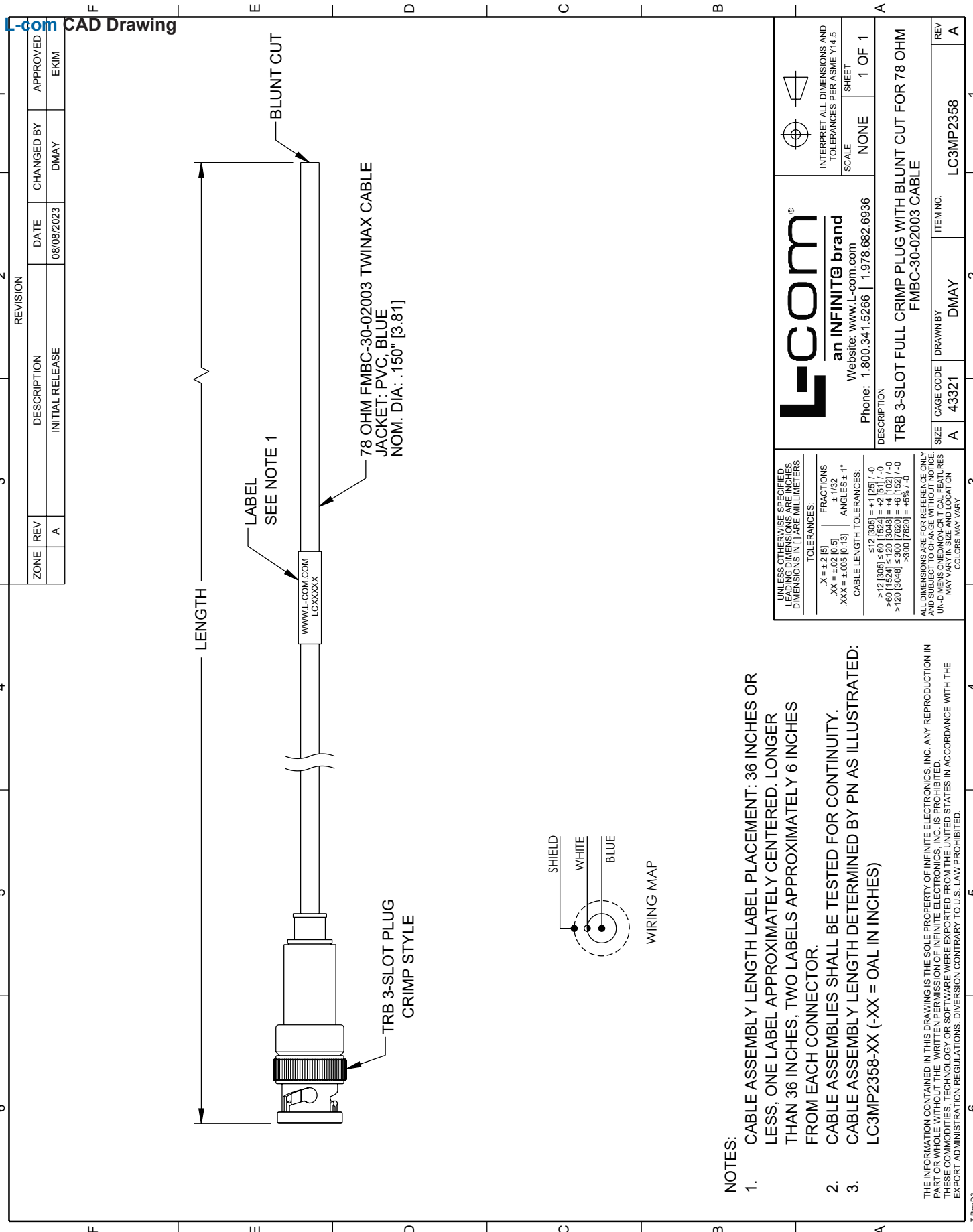
Unit of Measure:  
cm = Centimeters  
<blank> = Inches  
Length  
Base Number

Example: LC3MP2358-12 = 12 inches long cable  
LC3MP2358-100cm = 100 cm long cable

TRB 3-Slot Full Crimp Plug with Blunt Cut for 78 Ohm 30-2003-LC, 48" Cable from L-com has same day shipment for domestic and International orders. L-com is a leading manufacturer of wired and wireless connectivity products and committed to in-stock availability and same day shipping. Our portfolio includes coaxial cable assemblies, connectors, adapters and custom products as well as lightning and surge protectors, NEMA rated enclosures, and an RF product line which includes antennas, amplifiers, passive, and active components.

The information contained within this document is accurate to the best of our knowledge and representative of the part described herein. It may be necessary to make modifications to the part and/or the documentation of the part in order to implement improvements. L-com reserves the right to make such changes as required. Unless otherwise stated, all specifications are nominal. L-com does not make any representation or warranty regarding the suitability of the part described herein for any particular purpose, and L-com does not assume liability arising out of the use of any part or document contained within this document is accurate to the best of our knowledge and representative of the part described herein. It may be necessary to make modifications to the part and/or the documentation of the part in order to implement improvements. L-com reserves the right to make such changes as required. Unless otherwise stated, all specifications are nominal. L-com does not make any representation or warranty regarding the suitability of the part described herein for any particular purpose, and L-com does not assume liability arising out of the use of any part or document.

TRB 3-Slot Full Crimp Plug with Blunt Cut for 78 Ohm 30-2003-LC, 48" Cable



<b>L-com</b> an INFINITE® brand Website: www.L-com.com Phone: 1.800.341.5266   1.978.682.6936		INTERPRET ALL DIMENSIONS AND TOLERANCES PER ASME Y14.5 SCALE: NONE SHEET: 1 OF 1
DESCRIPTION: <b>TRB 3-SLOT FULL CRIMP PLUG WITH BLUNT CUT FOR 78 OHM FMBC-30-02003 CABLE</b>		
UNLESS OTHERWISE SPECIFIED, LEADING DIMENSIONS ARE IN INCHES, DIMENSIONS IN [ ] ARE MILLIMETERS. TOLERANCES: .X = ±.2 [5] .XX = ±.02 [0.5] .XXX = ±.005 [0.13] FRACTIONS: ± 1/32 ANGLES ± 1° CABLE LENGTH TOLERANCES: ≤12 [305] ±.12 [3.05] / -0 >12 [305] ≤ 60 [1524] = +.2 [5.1] / -0 >60 [1524] ≤ 120 [3048] = +.4 [10.2] / -0 >120 [3048] ≤ 300 [7620] = +.6 [15.2] / -0 >300 [7620] = +.5% / -0	ALL DIMENSIONS ARE FOR REFERENCE ONLY AND SUBJECT TO CHANGE WITHOUT NOTICE UNLESS OTHERWISE SPECIFIED. DIMENSIONS IN NON-CRITICAL FEATURES MAY VARY. COLORS MAY VARY.	
SIZE: A CAGE CODE: 43321 DRAWN BY: DMAY	ITEM NO.: LC3MP2358	REV: A

- NOTES:**
- CABLE ASSEMBLY LENGTH LABEL PLACEMENT: 36 INCHES OR LESS, ONE LABEL APPROXIMATELY CENTERED. LONGER THAN 36 INCHES, TWO LABELS APPROXIMATELY 6 INCHES FROM EACH CONNECTOR.
  - CABLE ASSEMBLIES SHALL BE TESTED FOR CONTINUITY.
  - CABLE ASSEMBLY LENGTH DETERMINED BY PN AS ILLUSTRATED: LC3MP2358-XX (-XX = OAL IN INCHES)

