

Lead Free Bend Relief 3-Slot TRB Plug to Plug for 78 Ohm M17/176-00002-LC, 36" Cable



LC3MSA00441-36

Configuration

- Connector 1: TRB 3-Slot Plug
- Connector 2: TRB 3-Slot Plug
- Cable Type: M17/176-00002-LC

Features

- MIL-STD-1553
- -55°C to +200°C
- 78 ohms

Applications

- Vehicle High Temperature
- Data
- MIL-STD-1553

Description

L-com's LC3MSA00441-36 is a lead free bend relief 3-Slot TRB plug to plug for 78 Ohm M17/176-00002-LC, 36" cable and ships same-day. These flexible RF cable assemblies are ideal for applications where flexure is required. Our L-com TRB 3-Slot to TRB 3-Slot cable assembly has a plug to plug gender configuration with 78 Ohm flexible M17/176-00002-LC series coax and operates to 10 MHz.

Custom versions of this TRB 3-Slot plug to TRB 3-Slot plug cable, along with the rest of L-com's other RF assemblies, can also be built and shipped same day. Other available RF cable assembly value added services from L-com include connector orientation or clocking, heat shrink booting and custom labeling. RF testing can also be performed to document the electrical performance of your cable assembly. Contact a sales representative for testing or custom RF cable quotes. Part number LC3MSA00441-36 L-com Lead Free Bend Relief 3-Slot TRB Plug to Plug for 78 Ohm M17/176-00002-LC, 36" Cable data sheet PDF includes details of the RF product specifications, CAD drawing(s) and dimensions below.

Electrical Specifications

Description	Minimum	Typical	Maximum	Units
Frequency Range	DC		10	MHz
Capacitance		24 [78.74]		pF/ft [pF/m]
Operating Voltage (AC)			750,000	Vrms

Specifications by Frequency

Description	F1	F2	F3	F4	F5	Units
Frequency	1	3	5	7	10	MHz
Insertion Loss (Typ.)	0.242	0.263	0.284	0.305	0.335	dB

Electrical Specification Notes:

The Insertion Loss data above is based on the performance specifications of the coax and connectors used in this assembly. The Insertion Loss includes an estimated insertion loss of 0.1 dB per connector.

Lead Free Bend Relief 3-Slot TRB Plug to Plug for
78 Ohm M17/176-00002-LC, 36" Cable



LC3MSA00441-36

Mechanical Specifications

Cable Assembly

Length*	36 in [914.4 mm]
Weight	0.154 lbs [69.85 g]

Cable

Cable Type	M17/176-00002-LC
Impedance	78 Ohms
Inner Conductor Type	Stranded
Inner Conductor Material and Plating	Copper, Silver
Dielectric Type	PTFE
Shield Layer 1	Silver Plated Copper
Jacket Material	PFA, Blue

One Time Minimum Bend Radius	1.5 in [38.1 mm]
------------------------------	------------------

Connectors

Description	Connector 1	Connector 2
Type	TRB 3-Slot Plug	TRB 3-Slot Plug
Impedance	78 Ohms	78 Ohms
Contact Material and Plating	Bronze, Gold 30 micro inches	Bronze, Gold 30 micro inches
Contact Plating Specification	ASTM-B-488	ASTM-B-488
Dielectric Type	Teflon	Teflon
Outer Conductor Material and Plating	Phosphor Bronze, Gold	Phosphor Bronze, Gold
Outer Conductor Plating Specification	30 micro inches	30 micro inches
Body Material and Plating	Brass, Nickel	Brass, Nickel
Body Plating Specification	ASTM-B-733	ASTM-B-733

Environmental Specifications

Temperature

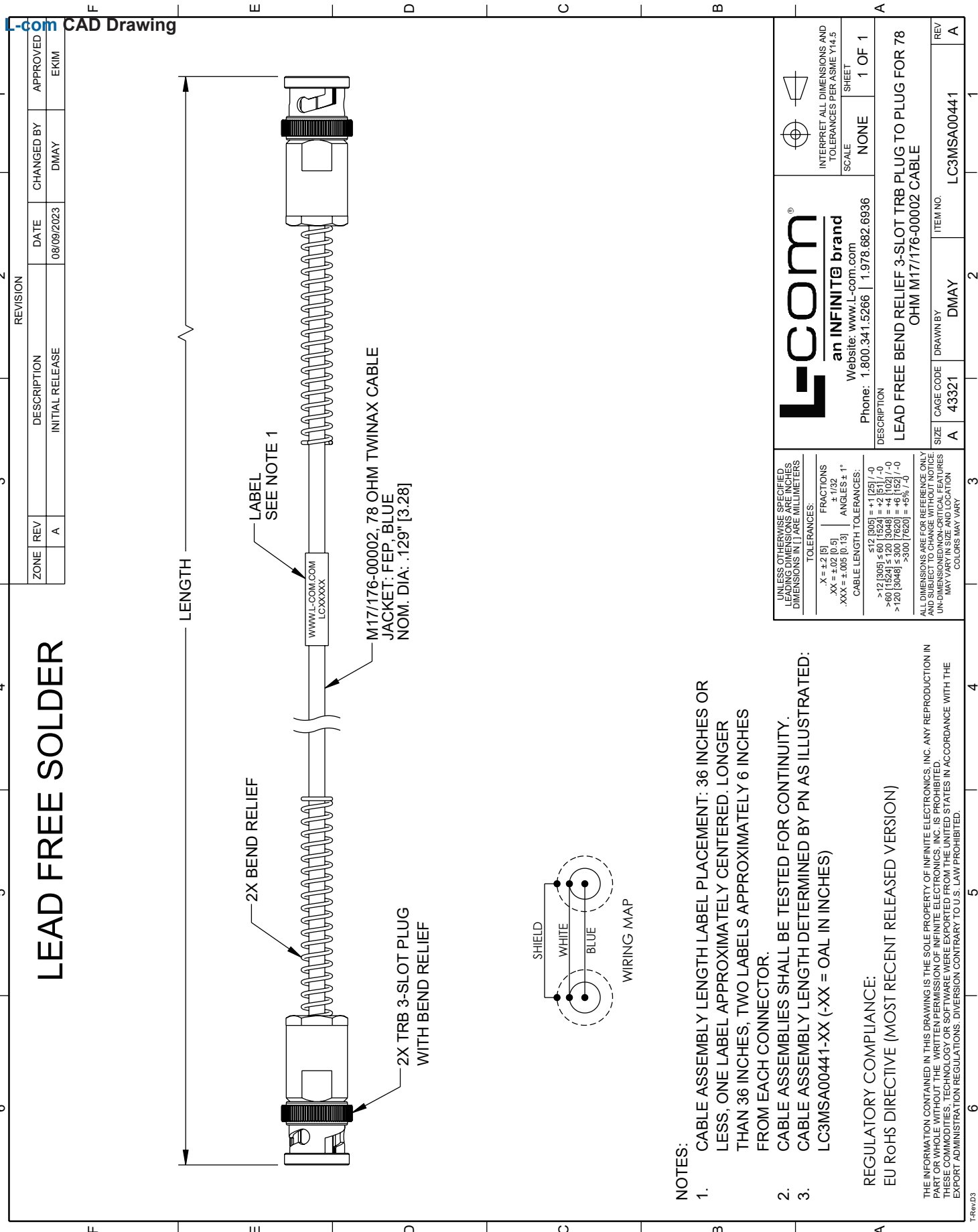
Operating Range	-55 to +200 deg C
-----------------	-------------------

Compliance Certifications (see [product page](#) for current document)

Plotted and Other Data

Notes:

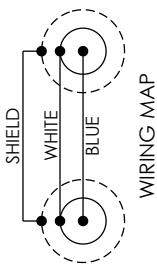
Lead Free Bend Relief 3-Slot TRB Plug to Plug for 78 Ohm M17/176-00002-LC, 36" Cable



LEAD FREE SOLDER

2X BEND RELIEF

2X TRB 3-SLOT PLUG WITH BEND RELIEF



NOTES:

- CABLE ASSEMBLY LENGTH LABEL PLACEMENT: 36 INCHES OR LESS, ONE LABEL APPROXIMATELY CENTERED. LONGER THAN 36 INCHES, TWO LABELS APPROXIMATELY 6 INCHES FROM EACH CONNECTOR.
- CABLE ASSEMBLIES SHALL BE TESTED FOR CONTINUITY.
- CABLE ASSEMBLY LENGTH DETERMINED BY PN AS ILLUSTRATED: LC3MSA00441-XX (-XX = OAL IN INCHES)

REGULATORY COMPLIANCE:

EU RoHS DIRECTIVE (MOST RECENT RELEASED VERSION)

THE INFORMATION CONTAINED IN THIS DRAWING IS THE SOLE PROPERTY OF INFINITE ELECTRONICS, INC. ANY REPRODUCTION IN WHOLE OR IN PART WITHOUT THE WRITTEN PERMISSION OF INFINITE ELECTRONICS, INC. IS PROHIBITED. THESE COMMODITIES, TECHNOLOGY OR SOFTWARE WERE EXPORTED FROM THE UNITED STATES IN ACCORDANCE WITH THE EXPORT ADMINISTRATION REGULATIONS. DIVERSION CONTRARY TO U.S. LAW PROHIBITED.

ZONE	REV	DESCRIPTION	DATE	CHANGED BY	APPROVED
	A	INITIAL RELEASE	08/09/2023	DMAY	EKIM

<p>L-com an INFINITE brand</p> <p>Website: www.L-com.com Phone: 1.800.341.5266 1.978.682.6936</p>		<p>INTERPRET ALL DIMENSIONS AND TOLERANCES PER ASME Y14.5</p> <p>SCALE: NONE</p> <p>SHEET: 1 OF 1</p>														
<p>DESCRIPTION: LEAD FREE BEND RELIEF 3-SLOT TRB PLUG TO PLUG FOR 78 OHM M17/176-00002 CABLE</p>																
<p>UNLESS OTHERWISE SPECIFIED, LEADING DIMENSIONS ARE IN INCHES. DIMENSIONS IN [] ARE MILLIMETERS.</p> <p>TOLERANCES:</p> <table border="0"> <tr> <td>-X = ±.2 [5]</td> <td>FRACTIONS ± 1/32</td> </tr> <tr> <td>-XX = ±.02 [0.5]</td> <td>ANGLES ± 1°</td> </tr> <tr> <td>-XXX = ±.005 [0.13]</td> <td></td> </tr> </table> <p>CABLE LENGTH TOLERANCES:</p> <table border="0"> <tr> <td><12 [305]</td> <td>±.1 [25]</td> </tr> <tr> <td>>12 [305] < 60 [1524]</td> <td>±.2 [51]</td> </tr> <tr> <td>>60 [1524] < 120 [3048]</td> <td>±.4 [102]</td> </tr> <tr> <td>>120 [3048] < 300 [7620]</td> <td>±.6 [152]</td> </tr> <tr> <td>>300 [7620]</td> <td>±.8 [203]</td> </tr> </table> <p>ALL DIMENSIONS ARE FOR REFERENCE ONLY AND SUBJECT TO CHANGE WITHOUT NOTICE. UN-DIMENSIONED NON-CRITICAL FEATURES MAY VARY. COLORS MAY VARY.</p>	-X = ±.2 [5]	FRACTIONS ± 1/32	-XX = ±.02 [0.5]	ANGLES ± 1°	-XXX = ±.005 [0.13]		<12 [305]	±.1 [25]	>12 [305] < 60 [1524]	±.2 [51]	>60 [1524] < 120 [3048]	±.4 [102]	>120 [3048] < 300 [7620]	±.6 [152]	>300 [7620]	±.8 [203]
-X = ±.2 [5]	FRACTIONS ± 1/32															
-XX = ±.02 [0.5]	ANGLES ± 1°															
-XXX = ±.005 [0.13]																
<12 [305]	±.1 [25]															
>12 [305] < 60 [1524]	±.2 [51]															
>60 [1524] < 120 [3048]	±.4 [102]															
>120 [3048] < 300 [7620]	±.6 [152]															
>300 [7620]	±.8 [203]															
<p>SIZE: A</p> <p>CAGE CODE: 43321</p> <p>DRAWN BY: DMAY</p> <p>ITEM NO.: LC3MSA00441</p>	<p>REV: A</p>	<p>1</p>														