

LSZH 1553 TRB 3-Slot Plug to Blunt Cut Genderless Cable Assembly using TWCH-78-2-LC Coax, 2 FT



LC3MSA00576-24

Configuration

- Connector 1: TRB 3-Slot Plug
- Connector 2: Blunt Cut Genderless
- Cable Type: TWCH-78-2-LC

Features

- MIL-STD-1553
- -30°C to +80°C
- 78 ohms
- Low Smoke Zero Halogen
- Non-Toxic

Applications

- Military Contractors
- MIL-STD-1553
- Data
- Safer Environments
- Ventilation critical areas
- Hospitals

Description

L-com's LC3MSA00576-24 is a LSZH 1553 TRB 3-Slot plug to blunt cut genderless cable assembly using TWCH-78-2-LC coax, 2 FT and ships same-day. These flexible RF cable assemblies are ideal for applications where flexure is required. Our L-com TRB 3-Slot to Blunt Cut cable assembly has a plug to genderless gender configuration with 78 Ohm flexible TWCH-78-2-LC series coax and operates to 500 MHz. The LC3MSA00576 cable assembly consists of a 78 Ohm Low Smoke Zero Halogen 3-Slot TRB Solder/Clamp Plug with Blunt Cut for TWCH-78-2 cable (.242 O.D.) suitable for MIL-STD-1553 Applications. The zero halogen jacket cable reduces the amount of toxic and corrosive gases emitted during combustion. Typically used in poorly ventilated areas, zero halogen is very popular with military contractors and anywhere the protection of people and equipment from toxic and corrosive gases is critical.

Custom versions of this TRB 3-Slot plug to TRB 3-Slot genderless cable, along with the rest of L-com's other RF assemblies, can also be built and shipped same day. Other available RF cable assembly value added services from L-com include connector orientation or clocking, heat shrink booting and custom labeling. RF testing can also be performed to document the electrical performance of your cable assembly. Contact a sales representative for testing or custom RF cable quotes. Part number LC3MSA00576-24 L-com LSZH 1553 TRB 3-Slot Plug to Blunt Cut Genderless Cable Assembly using TWCH-78-2-LC Coax, 2 FT data sheet PDF includes details of the RF product specifications, CAD drawing(s) and dimensions below.

Electrical Specifications

| Description | Minimum | Typical | Maximum | Units |
|------------------------|---------|--------------|---------|--------------|
| Frequency Range | DC | | 500 | MHz |
| Capacitance | | 21.2 [69.55] | | pF/ft [pF/m] |
| Operating Voltage (AC) | | | 1,000 | Vrms |

Insertion Loss (Typ.)
Electrical Specification Notes:

The Insertion Loss data above is based on the performance specifications of the coax and connectors used in this assembly. The Insertion Loss includes an estimated insertion loss of 0.1 dB per connector.

Mechanical Specifications

| | |
|-----------------------|------------------|
| Cable Assembly | |
| Length* | 24 in [609.6 mm] |

LSZH 1553 TRB 3-Slot Plug to Blunt Cut Genderless Cable
Assembly using TWCH-78-2-LC Coax, 2 FT



LC3MSA00576-24

| | |
|--------------------------------------|----------------------|
| Weight | 0.275 lbs [124.74 g] |
| Cable | |
| Cable Type | TWCH-78-2-LC |
| Impedance | 78 Ohms |
| Inner Conductor Type | Stranded |
| Inner Conductor Material and Plating | Copper, Silver |
| Dielectric Type | PE |
| Shield Layer 1 | Silver Plated Copper |
| Jacket Material | HF POF, Blue |
| One Time Minimum Bend Radius | 1.25 in [31.75 mm] |

Connectors

| Description | Connector 1 | Connector 2 |
|---------------------------------------|------------------------------|----------------------|
| Type | TRB 3-Slot Plug | Blunt Cut Genderless |
| Impedance | 78 Ohms | |
| Contact Material and Plating | Bronze, Gold 30 micro inches | |
| Contact Plating Specification | ASTM-B-488 | |
| Dielectric Type | Teflon | |
| Outer Conductor Material and Plating | Phosphor Bronze, Gold | |
| Outer Conductor Plating Specification | 30 micro inches | |
| Body Material and Plating | Brass, Nickel | |
| Body Plating Specification | ASTM-B-733 | |

Environmental Specifications

Temperature

Operating Range -30 to +80 deg C

Compliance Certifications (see [product page](#) for current document)

Plotted and Other Data

Notes:

LSZH 1553 TRB 3-Slot Plug to Blunt Cut Genderless Cable Assembly using TWCH-78-2-LC Coax, 2 FT



LC3MSA00576-24

How to Order

Part Number Configuration:

LC3MSA00576 - xx uu

Unit of Measure:
cm = Centimeters
<blank> = Inches
Length
Base Number

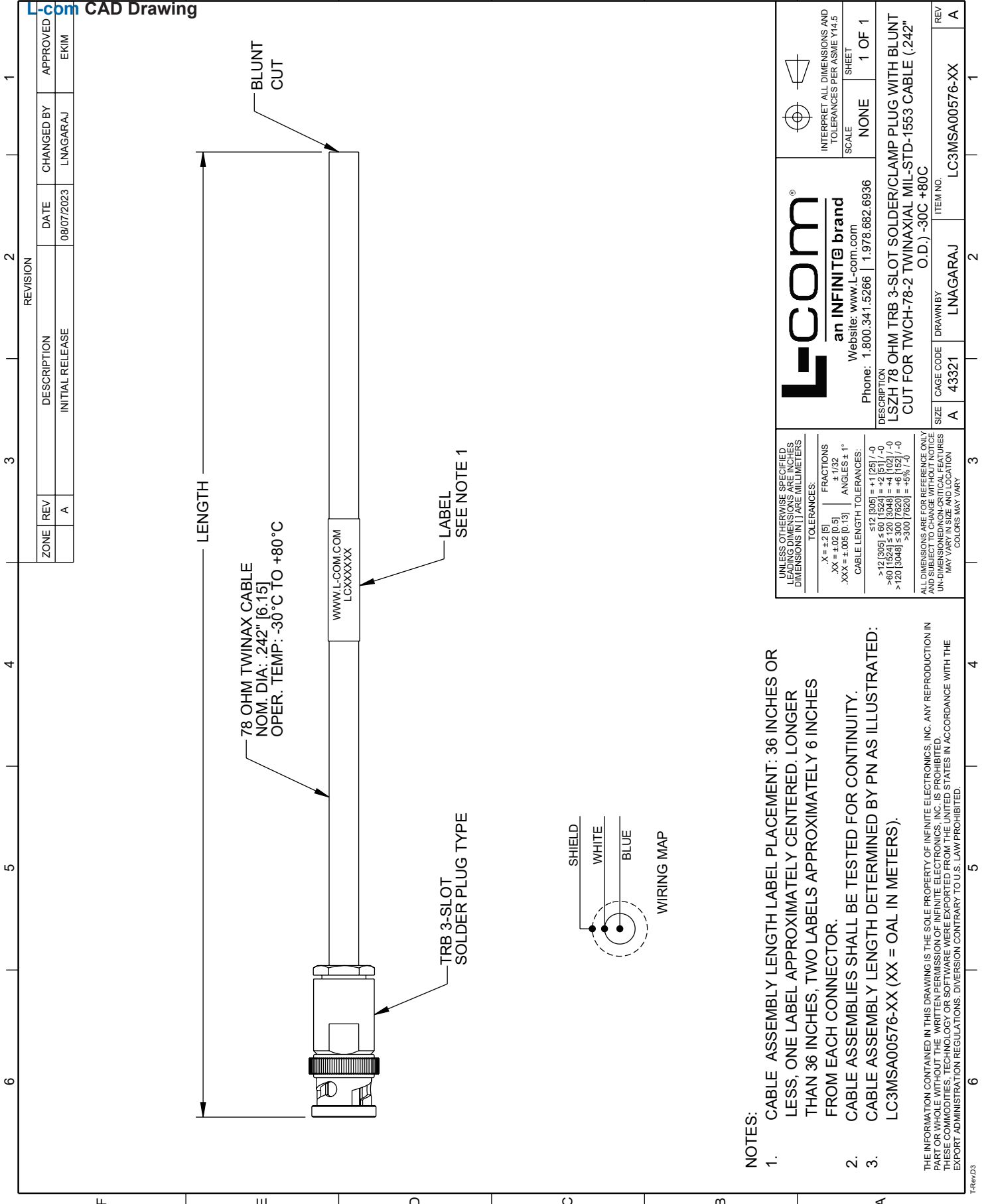
Example: LC3MSA00576-12 = 12 inches long cable
LC3MSA00576-100cm = 100 cm long cable

LSZH 1553 TRB 3-Slot Plug to Blunt Cut Genderless Cable Assembly using TWCH-78-2-LC Coax, 2 FT from L-com has same day shipment for domestic and International orders. L-com is a leading manufacturer of wired and wireless connectivity products and committed to in-stock availability and same day shipping. Our portfolio includes coaxial cable assemblies, connectors, adapters and custom products as well as lightning and surge protectors, NEMA rated enclosures, and an RF product line which includes antennas, amplifiers, passive, and active components.

The information contained within this document is accurate to the best of our knowledge and representative of the part described herein. It may be necessary to make modifications to the part and/or the documentation of the part in order to implement improvements. L-com reserves the right to make such changes as required. Unless otherwise stated, all specifications are nominal. L-com does not make any representation or warranty regarding the suitability of the part described herein for any particular purpose, and L-com does not assume liability arising out of the use of any part or document contained within this document is accurate to the best of our knowledge and representative of the part described herein. It may be necessary to make modifications to the part and/or the documentation of the part in order to implement improvements. L-com reserves the right to make such changes as required. Unless otherwise stated, all specifications are nominal. L-com does not make any representation or warranty regarding the suitability of the part described herein for any particular purpose, and L-com does not assume liability arising out of the use of any part or document.

LSZH 1553 TRB 3-Slot Plug to Blunt Cut Genderless Cable Assembly using TWCH-78-2-LC Coax, 2 FT

L-com CAD Drawing



NOTES:

1. CABLE ASSEMBLY LENGTH LABEL PLACEMENT: 36 INCHES OR LESS, ONE LABEL APPROXIMATELY CENTERED. LONGER THAN 36 INCHES, TWO LABELS APPROXIMATELY 6 INCHES FROM EACH CONNECTOR.
2. CABLE ASSEMBLIES SHALL BE TESTED FOR CONTINUITY.
3. CABLE ASSEMBLY LENGTH DETERMINED BY PN AS ILLUSTRATED: LC3MSA00576-XX (XX = OAL IN METERS).

THE INFORMATION CONTAINED IN THIS DRAWING IS THE SOLE PROPERTY OF INFINITE ELECTRONICS, INC. ANY REPRODUCTION IN PART OR WHOLE WITHOUT THE WRITTEN PERMISSION OF INFINITE ELECTRONICS, INC. IS PROHIBITED. THESE COMMODITIES, TECHNOLOGY OR SOFTWARE WERE EXPORTED FROM THE UNITED STATES IN ACCORDANCE WITH THE EXPORT ADMINISTRATION REGULATIONS. DIVERSION CONTRARY TO U.S. LAW PROHIBITED.

| | | | | | | | | | | | | | | | | |
|--|---|--------------|-----------|------------------|--------|---------------------|--------------|-----------|------------|------------|-----------|-------------|----------|-------------|-----------|-------------|
| <p>L-com an INFINITE brand</p> <p>Website: www.L-com.com</p> <p>Phone: 1.800.341.5266 1.978.682.6936</p> | <p>INTERPRET ALL DIMENSIONS AND TOLERANCES PER ASME Y14.5</p> <p>SCALE: NONE</p> <p>SHEET: 1 OF 1</p> | | | | | | | | | | | | | | | |
| | <p>UNLESS OTHERWISE SPECIFIED, ALL DIMENSIONS ARE IN INCHES. DIMENSIONS IN [] ARE MILLIMETERS.</p> <p>TOLERANCES:</p> <table border="1"> <tr> <td>.X = ±.2 [5]</td> <td>FRACTIONS</td> </tr> <tr> <td>.XX = ±.02 [0.5]</td> <td>± 7/32</td> </tr> <tr> <td>.XXX = ±.005 [0.13]</td> <td>ANGLES ± .1°</td> </tr> </table> <p>CABLE LENGTH TOLERANCES:</p> <table border="1"> <tr> <td>>12 [305]</td> <td>±.125 [-0]</td> </tr> <tr> <td>>60 [1524]</td> <td>±.25 [-0]</td> </tr> <tr> <td>>120 [3048]</td> <td>±.5 [-0]</td> </tr> <tr> <td>>240 [6096]</td> <td>±.75 [-0]</td> </tr> <tr> <td>>300 [7620]</td> <td>±.88 [-0]</td> </tr> </table> <p>ALL DIMENSIONS ARE FOR REFERENCE ONLY AND SUBJECT TO CHANGE WITHOUT NOTICE UNLESS OTHERWISE SPECIFIED. DIMENSIONS MAY VARY IN SIZE AND LOCATION. COLORS MAY VARY.</p> | .X = ±.2 [5] | FRACTIONS | .XX = ±.02 [0.5] | ± 7/32 | .XXX = ±.005 [0.13] | ANGLES ± .1° | >12 [305] | ±.125 [-0] | >60 [1524] | ±.25 [-0] | >120 [3048] | ±.5 [-0] | >240 [6096] | ±.75 [-0] | >300 [7620] |
| .X = ±.2 [5] | FRACTIONS | | | | | | | | | | | | | | | |
| .XX = ±.02 [0.5] | ± 7/32 | | | | | | | | | | | | | | | |
| .XXX = ±.005 [0.13] | ANGLES ± .1° | | | | | | | | | | | | | | | |
| >12 [305] | ±.125 [-0] | | | | | | | | | | | | | | | |
| >60 [1524] | ±.25 [-0] | | | | | | | | | | | | | | | |
| >120 [3048] | ±.5 [-0] | | | | | | | | | | | | | | | |
| >240 [6096] | ±.75 [-0] | | | | | | | | | | | | | | | |
| >300 [7620] | ±.88 [-0] | | | | | | | | | | | | | | | |
| <p>DESCRIPTION</p> <p>LSZH 78 OHM TRB 3-SLOT SOLDER/CLAMP PLUG WITH BLUNT CUT FOR TWCH-78-2 TWINAXIAL MIL-STD-1553 CABLE (.242" O.D.) -30C +80C</p> | <p>REV</p> <p>ITEM NO.</p> <p>LC3MSA00576-XX</p> | | | | | | | | | | | | | | | |
| <p>SIZE</p> <p>CAGE CODE</p> <p>A 43321</p> | <p>DRAWN BY</p> <p>LNAGARAJ</p> | | | | | | | | | | | | | | | |