

LSZH 1553 TRB 3-Slot Plug to Blunt Cut Genderless Cable Assembly using TWCH-78-2-LC Coax, 3 FT



LC3MSA00576-36

Configuration

- Connector 1: TRB 3-Slot Plug
- Connector 2: Blunt Cut Genderless
- Cable Type: TWCH-78-2-LC

Features

- MIL-STD-1553
- -30°C to +80°C
- 78 ohms
- Low Smoke Zero Halogen
- Non-Toxic

Applications

- Military Contractors
- MIL-STD-1553
- Data
- Safer Environments
- Ventilation critical areas
- Hospitals

Description

L-com's LC3MSA00576-36 is a LSZH 1553 TRB 3-Slot plug to blunt cut genderless cable assembly using TWCH-78-2-LC coax, 3 FT and ships same-day. These flexible RF cable assemblies are ideal for applications where flexure is required. Our L-com TRB 3-Slot to Blunt Cut cable assembly has a plug to genderless gender configuration with 78 Ohm flexible TWCH-78-2-LC series coax and operates to 500 MHz. The LC3MSA00576 cable assembly consists of a 78 Ohm Low Smoke Zero Halogen 3-Slot TRB Solder/Clamp Plug with Blunt Cut for TWCH-78-2 cable (.242 O.D.) suitable for MIL-STD-1553 Applications. The zero halogen jacket cable reduces the amount of toxic and corrosive gases emitted during combustion. Typically used in poorly ventilated areas, zero halogen is very popular with military contractors and anywhere the protection of people and equipment from toxic and corrosive gases is critical.

Custom versions of this TRB 3-Slot plug to TRB 3-Slot genderless cable, along with the rest of L-com's other RF assemblies, can also be built and shipped same day. Other available RF cable assembly value added services from L-com include connector orientation or clocking, heat shrink booting and custom labeling. RF testing can also be performed to document the electrical performance of your cable assembly. Contact a sales representative for testing or custom RF cable quotes. Part number LC3MSA00576-36 L-com LSZH 1553 TRB 3-Slot Plug to Blunt Cut Genderless Cable Assembly using TWCH-78-2-LC Coax, 3 FT data sheet PDF includes details of the RF product specifications, CAD drawing(s) and dimensions below.

Electrical Specifications

Description	Minimum	Typical	Maximum	Units
Frequency Range	DC		500	MHz
Capacitance		21.2 [69.55]		pF/ft [pF/m]
Operating Voltage (AC)			1,000	Vrms

Insertion Loss (Typ.)
Electrical Specification Notes:

The Insertion Loss data above is based on the performance specifications of the coax and connectors used in this assembly. The Insertion Loss includes an estimated insertion loss of 0.1 dB per connector.

Mechanical Specifications

Cable Assembly	
Length*	36 in [914.4 mm]

LSZH 1553 TRB 3-Slot Plug to Blunt Cut Genderless Cable
Assembly using TWCH-78-2-LC Coax, 3 FT



LC3MSA00576-36

Weight	0.303 lbs [137.44 g]
Cable	
Cable Type	TWCH-78-2-LC
Impedance	78 Ohms
Inner Conductor Type	Stranded
Inner Conductor Material and Plating	Copper, Silver
Dielectric Type	PE
Shield Layer 1	Silver Plated Copper
Jacket Material	HF POF, Blue
One Time Minimum Bend Radius	1.25 in [31.75 mm]

Connectors

Description	Connector 1	Connector 2
Type	TRB 3-Slot Plug	Blunt Cut Genderless
Impedance	78 Ohms	
Contact Material and Plating	Bronze, Gold 30 micro inches	
Contact Plating Specification	ASTM-B-488	
Dielectric Type	Teflon	
Outer Conductor Material and Plating	Phosphor Bronze, Gold	
Outer Conductor Plating Specification	30 micro inches	
Body Material and Plating	Brass, Nickel	
Body Plating Specification	ASTM-B-733	

Environmental Specifications

Temperature

Operating Range	-30 to +80 deg C
-----------------	------------------

Compliance Certifications (see [product page](#) for current document)

Plotted and Other Data

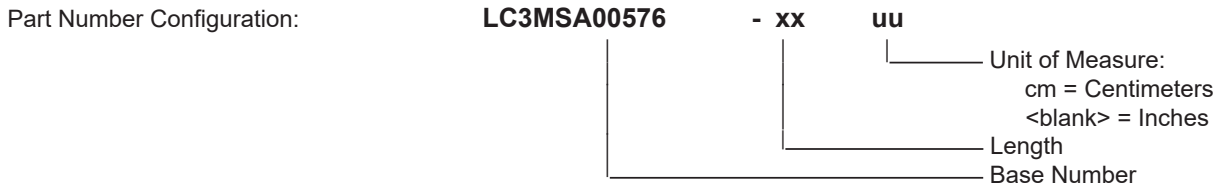
Notes:

LSZH 1553 TRB 3-Slot Plug to Blunt Cut Genderless Cable Assembly using TWCH-78-2-LC Coax, 3 FT



LC3MSA00576-36

How to Order



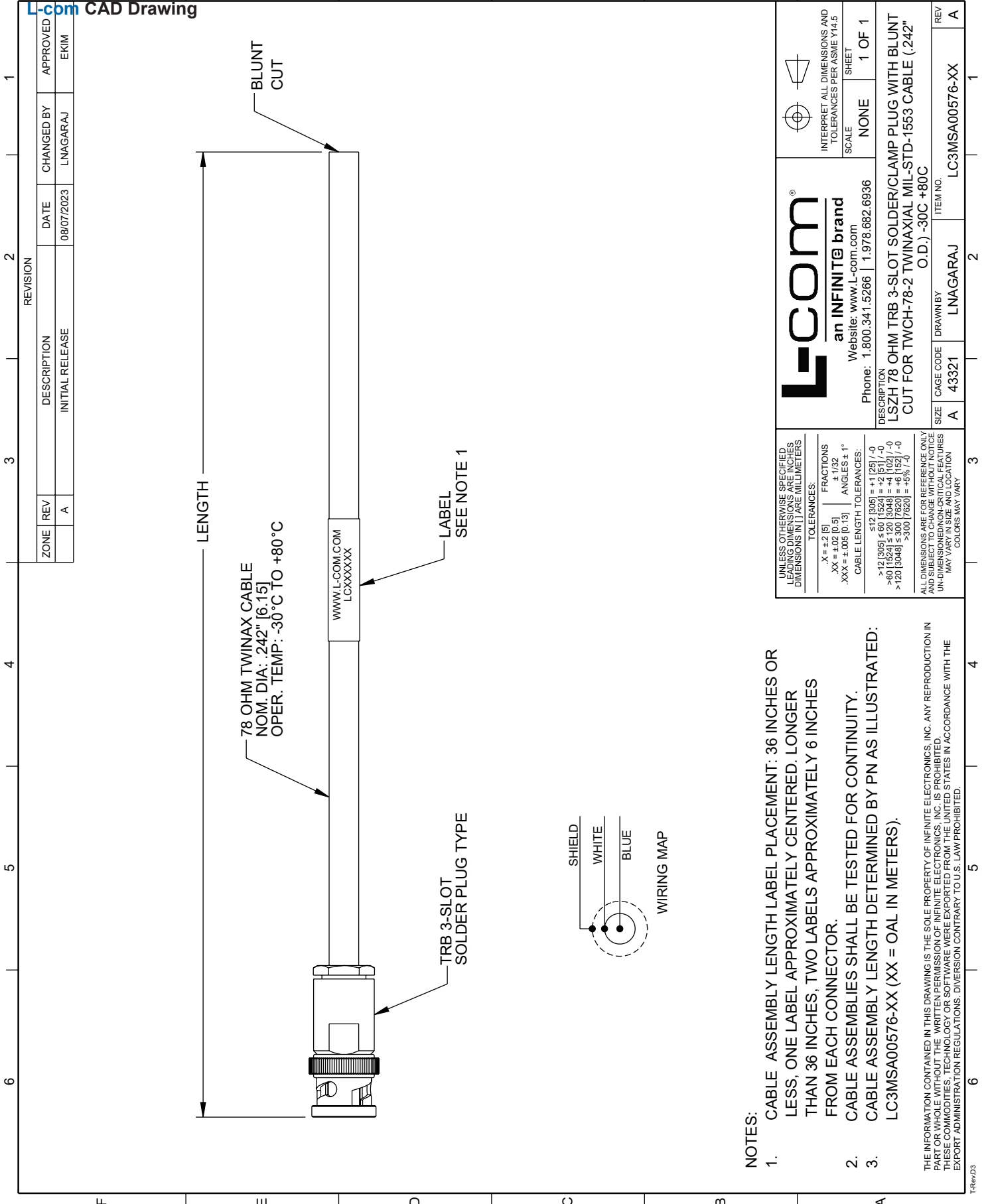
Example: LC3MSA00576-12 = 12 inches long cable
 LC3MSA00576-100cm = 100 cm long cable

LSZH 1553 TRB 3-Slot Plug to Blunt Cut Genderless Cable Assembly using TWCH-78-2-LC Coax, 3 FT from L-com has same day shipment for domestic and International orders. L-com is a leading manufacturer of wired and wireless connectivity products and committed to in-stock availability and same day shipping. Our portfolio includes coaxial cable assemblies, connectors, adapters and custom products as well as lightning and surge protectors, NEMA rated enclosures, and an RF product line which includes antennas, amplifiers, passive, and active components.

The information contained within this document is accurate to the best of our knowledge and representative of the part described herein. It may be necessary to make modifications to the part and/or the documentation of the part in order to implement improvements. L-com reserves the right to make such changes as required. Unless otherwise stated, all specifications are nominal. L-com does not make any representation or warranty regarding the suitability of the part described herein for any particular purpose, and L-com does not assume liability arising out of the use of any part or document contained within this document is accurate to the best of our knowledge and representative of the part described herein. It may be necessary to make modifications to the part and/or the documentation of the part in order to implement improvements. L-com reserves the right to make such changes as required. Unless otherwise stated, all specifications are nominal. L-com does not make any representation or warranty regarding the suitability of the part described herein for any particular purpose, and L-com does not assume liability arising out of the use of any part or document.

LSZH 1553 TRB 3-Slot Plug to Blunt Cut Genderless Cable Assembly using TWCH-78-2-LC Coax, 3 FT

L-com CAD Drawing



NOTES:

1. CABLE ASSEMBLY LENGTH LABEL PLACEMENT: 36 INCHES OR LESS, ONE LABEL APPROXIMATELY CENTERED. LONGER THAN 36 INCHES, TWO LABELS APPROXIMATELY 6 INCHES FROM EACH CONNECTOR.
2. CABLE ASSEMBLIES SHALL BE TESTED FOR CONTINUITY.
3. CABLE ASSEMBLY LENGTH DETERMINED BY PN AS ILLUSTRATED: LC3MSA00576-XX (XX = OAL IN METERS).

THE INFORMATION CONTAINED IN THIS DRAWING IS THE SOLE PROPERTY OF INFINITE ELECTRONICS, INC. ANY REPRODUCTION IN PART OR WHOLE WITHOUT THE WRITTEN PERMISSION OF INFINITE ELECTRONICS, INC. IS PROHIBITED. THESE COMMODITIES, TECHNOLOGY OR SOFTWARE WERE EXPORTED FROM THE UNITED STATES IN ACCORDANCE WITH THE EXPORT ADMINISTRATION REGULATIONS. DIVERSION CONTRARY TO U.S. LAW PROHIBITED.

<p>L-com an INFINITE brand</p> <p>Website: www.L-com.com</p> <p>Phone: 1.800.341.5266 1.978.682.6936</p>	<p>INTERPRET ALL DIMENSIONS AND TOLERANCES PER ASME Y14.5</p>										
	<p>SCALE: NONE</p> <p>SHEET: 1 OF 1</p>										
<p>DESCRIPTION: LSZH 78 OHM TRB 3-SLOT SOLDER/CLAMP PLUG WITH BLUNT CUT FOR TWCH-78-2 TWINAXIAL MIL-STD-1553 CABLE (.242" O.D.) -30C +80C</p>											
<p>UNLESS OTHERWISE SPECIFIED, UNLESS DIMENSIONS SPECIFIED, DIMENSIONS IN [] ARE MILLIMETERS</p> <p>TOLERANCES:</p> <table border="0"> <tr> <td>.X = ±.2 [5]</td> <td>FRACTIONS</td> </tr> <tr> <td>.XX = ±.02 [0.5]</td> <td>± 7/32</td> </tr> <tr> <td>.XXX = ±.005 [0.13]</td> <td>ANGLES ± .1°</td> </tr> </table> <p>CABLE LENGTH TOLERANCES:</p> <table border="0"> <tr> <td>>12 [305] ≤ 60 [1524] = +1 [25] / -0</td> </tr> <tr> <td>>60 [1524] ≤ 120 [3048] = +4 [102] / -0</td> </tr> <tr> <td>>120 [3048] ≤ 300 [7620] = +5% [52] / -0</td> </tr> <tr> <td>>300 [7620] = +5% [52]</td> </tr> </table>	.X = ±.2 [5]	FRACTIONS	.XX = ±.02 [0.5]	± 7/32	.XXX = ±.005 [0.13]	ANGLES ± .1°	>12 [305] ≤ 60 [1524] = +1 [25] / -0	>60 [1524] ≤ 120 [3048] = +4 [102] / -0	>120 [3048] ≤ 300 [7620] = +5% [52] / -0	>300 [7620] = +5% [52]	<p>REV: A</p> <p>ITEM NO: LC3MSA00576-XX</p>
.X = ±.2 [5]	FRACTIONS										
.XX = ±.02 [0.5]	± 7/32										
.XXX = ±.005 [0.13]	ANGLES ± .1°										
>12 [305] ≤ 60 [1524] = +1 [25] / -0											
>60 [1524] ≤ 120 [3048] = +4 [102] / -0											
>120 [3048] ≤ 300 [7620] = +5% [52] / -0											
>300 [7620] = +5% [52]											
<p>SIZE: A</p> <p>CAGE CODE: 43321</p> <p>DRAWN BY: LNAGARAJ</p>	<p>SCALE: NONE</p> <p>SHEET: 1 OF 1</p>										