

TRB 3-Lug Jack Insulated Bulkhead to TRB 3-Lug Jack Insulated Bulkhead 1553 Cable 60" Using 124 Ohm TWC-124-2 Twinax



LC3MSA00664-60

Configuration

- Connector 1: TRB 3-Lug Jack Bulkhead Insulated
- Connector 2: TRB 3-Lug Jack Bulkhead Insulated
- Cable Type: TWC-124-2

Features

- 124 ohms
- Twinaxial
- MIL-STD-1553B
- -40°C to +80°C
- Lead Free Solder
- Standard and Custom Lengths Available

Applications

- MIL-STD-1553B Applications
- Data Transmission

Description

L-com's LC3MSA00664-60 is a TRB 3-Lug jack insulated bulkhead to TRB 3-Lug jack insulated bulkhead 1553 cable 60" using 124 Ohm TWC-124-2 twinax and ships same-day. These flexible RF cable assemblies are ideal for applications where flexure is required. Our L-com TRB 3-Lug to TRB 3-Lug cable assembly has a jack to jack gender configuration with 78 Ohm flexible TWC-124-2 series coax and operates to 500 MHz.

Custom versions of this TRB 3-Lug jack to TRB 3-Lug jack cable, along with the rest of L-com's other RF assemblies, can also be built and shipped same day. Other available RF cable assembly value added services from L-com include connector orientation or clocking, heat shrink booting and custom labeling. RF testing can also be performed to document the electrical performance of your cable assembly. Contact a sales representative for testing or custom RF cable quotes. Part number LC3MSA00664-60 L-com TRB 3-Lug Jack Insulated Bulkhead to TRB 3-Lug Jack Insulated Bulkhead 1553 Cable 60" Using 124 Ohm TWC-124-2 Twinax data sheet PDF includes details of the RF product specifications, CAD drawing(s) and dimensions below.

Electrical Specifications

| Description | Minimum | Typical | Maximum | Units |
|------------------------|---------|--------------|---------|--------------|
| Frequency Range | DC | | 500 | MHz |
| Capacitance | | 12.3 [40.35] | | pF/ft [pF/m] |
| Operating Voltage (AC) | | | 1,000 | Vrms |

Specifications by Frequency

| Description | F1 | F2 | F3 | F4 | F5 | Units |
|-----------------------|-------|------|-------|------|------|-------|
| Frequency | 10 | 50 | 100 | 200 | 500 | MHz |
| Insertion Loss (Typ.) | 0.285 | 0.38 | 0.455 | 0.56 | 0.77 | dB |

Electrical Specification Notes:

The Insertion Loss data above is based on the performance specifications of the coax and connectors used in this assembly. The Insertion Loss includes an estimated insertion loss of 0.1 dB per connector.

TRB 3-Lug Jack Insulated Bulkhead to TRB 3-Lug Jack Insulated Bulkhead 1553 Cable 60" Using 124 Ohm TWC-124-2 Twinax



LC3MSA00664-60

Mechanical Specifications

Cable Assembly

| | |
|---------|------------------------|
| Length* | 60 in [152.4 cm] |
| Weight | 0.28228 lbs [128.04 g] |

Cable

| | |
|--------------------------------------|----------------------|
| Cable Type | TWC-124-2 |
| Impedance | 124 Ohms |
| Inner Conductor Type | Stranded |
| Inner Conductor Material and Plating | Copper, Silver |
| Dielectric Type | PE |
| Shield Layer 1 | Silver Plated Copper |
| Jacket Material | PVC, Blue |

| | |
|------------------------------|--------------------|
| One Time Minimum Bend Radius | 1.25 in [31.75 mm] |
|------------------------------|--------------------|

Connectors

| Description | Connector 1 | Connector 2 |
|---------------------------------------|-----------------------------------|-----------------------------------|
| Type | TRB 3-Lug Jack Bulkhead Insulated | TRB 3-Lug Jack Bulkhead Insulated |
| Specification | MIL-STD-1553 | MIL-STD-1553 |
| Impedance | 78 Ohms | 78 Ohms |
| Contact Material and Plating | Bronze, Gold 30 micro inches | Bronze, Gold 30 micro inches |
| Contact Plating Specification | ASTM-B-488 | ASTM-B-488 |
| Dielectric Type | Teflon | Teflon |
| Outer Conductor Material and Plating | Phosphor Bronze, Gold | Phosphor Bronze, Gold |
| Outer Conductor Plating Specification | 30 micro inches | 30 micro inches |
| Body Material and Plating | Brass, Nickel | Brass, Nickel |
| Body Plating Specification | ASTM-B-733 | ASTM-B-733 |

Environmental Specifications

Temperature

| | |
|-----------------|------------------|
| Operating Range | -40 to +80 deg C |
|-----------------|------------------|

Compliance Certifications (see [product page](#) for current document)

Plotted and Other Data

Notes:

TRB 3-Lug Jack Insulated Bulkhead to TRB 3-Lug Jack Insulated Bulkhead 1553 Cable 60" Using 124 Ohm TWC-124-2 Twinax



LC3MSA00664-60

How to Order

Part Number Configuration:

LC3MSA00664 - xx uu



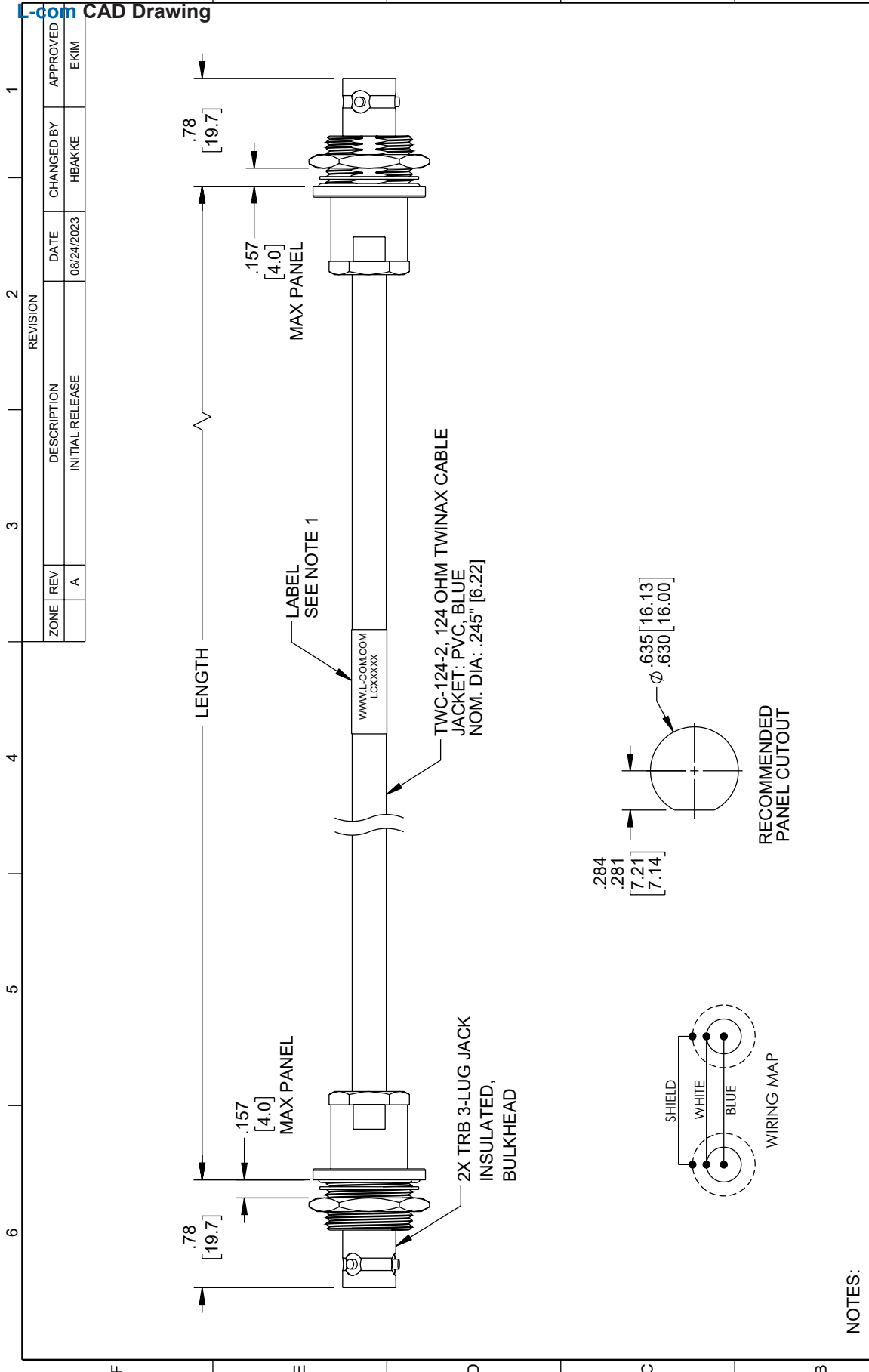
Example: LC3MSA00664-12 = 12 inches long cable
LC3MSA00664-100cm = 100 cm long cable

TRB 3-Lug Jack Insulated Bulkhead to TRB 3-Lug Jack Insulated Bulkhead 1553 Cable 60" Using 124 Ohm TWC-124-2 Twinax from L-com has same day shipment for domestic and International orders. L-com is a leading manufacturer of wired and wireless connectivity products and committed to in-stock availability and same day shipping. Our portfolio includes coaxial cable assemblies, connectors, adapters and custom products as well as lightning and surge protectors, NEMA rated enclosures, and an RF product line which includes antennas, amplifiers, passive, and active components.

The information contained within this document is accurate to the best of our knowledge and representative of the part described herein. It may be necessary to make modifications to the part and/or the documentation of the part in order to implement improvements. L-com reserves the right to make such changes as required. Unless otherwise stated, all specifications are nominal. L-com does not make any representation or warranty regarding the suitability of the part described herein for any particular purpose, and L-com does not assume liability arising out of the use of any part or document. The information contained within this document is accurate to the best of our knowledge and representative of the part described herein. It may be necessary to make modifications to the part and/or the documentation of the part in order to implement improvements. L-com reserves the right to make such changes as required. Unless otherwise stated, all specifications are nominal. L-com does not make any representation or warranty regarding the suitability of the part described herein for any particular purpose, and L-com does not assume liability arising out of the use of any part or document.

TRB 3-Lug Jack Insulated Bulkhead to TRB 3-Lug Jack Insulated Bulkhead
 1553 Cable 60" Using 124 Ohm TWC-124-2 Twinax

L-com CAD Drawing



| | | | | | |
|---|--|---|--|--|--|
| UNLESS OTHERWISE SPECIFIED, LEADING DIMENSIONS ARE IN INCHES, DIMENSIONS IN [] ARE MILLIMETERS | | L-com® an INFINITE® brand Website: www.L-com.com Phone: 1.800.341.5266 1.978.682.6936 | | INTERPRET ALL DIMENSIONS AND TOLERANCES PER ASME Y14.5 | |
| TOLERANCES: | | FRACTIONS | | SCALE | |
| .X = ±.2 [5] | | ± 1/32 | | NONE | |
| .XX = ±.02 [0.5] | | ANGLES ± 1° | | SHEET | |
| .XXX = ±.005 [0.13] | | CABLE LENGTH TOLERANCES: | | 1 OF 1 | |
| | | <12 [305] ≤ +1 [25] / -0 | | | |
| | | >12 [305] ≤ 60 [1524] = +2 [51] / -0 | | | |
| | | >60 [1524] ≤ 120 [3048] = +4 [102] / -0 | | | |
| | | >120 [3048] ≤ 300 [7620] = +6 [152] / -0 | | | |
| | | >300 [7620] = +5% / -0 | | | |
| ALL DIMENSIONS ARE FOR REFERENCE ONLY AND SUBJECT TO CHANGE WITHOUT NOTICE UNLESS OTHERWISE SPECIFIED. DIMENSIONAL INFORMATION MAY VARY. COLORS MAY VARY. | | DESCRIPTION TRB 3-LUG JACK INSULATED BULKHEAD TO TRB 3-LUG JACK INSULATED BULKHEAD 1553 CABLE USING 124 OHM TWC-124-2 TWINAX | | REV | |
| SIZE | | CAGE CODE | | ITEM NO. | |
| A | | 43321 | | LC3MSA00664 | |
| DRAWN BY | | HBAKKE | | A | |

NOTES:

- CABLE ASSEMBLY LENGTH LABEL PLACEMENT: 36 INCH OR LESS, ONE LABEL APPROXIMATELY CENTERED. LONGER THAN 36 INCH, TWO LABELS APPROXIMATELY 6 INCHES FROM EACH CONNECTOR.
- CABLE ASSEMBLIES SHALL BE TESTED FOR CONTINUITY.
- CABLE ASSEMBLY LENGTH DETERMINED BY ITEM NUMBER AS SHOWN: LC3MSA00664-XX (-XX = OAL IN INCHES).

THE INFORMATION CONTAINED IN THIS DRAWING IS THE SOLE PROPERTY OF INFINITE ELECTRONICS, INC. ANY REPRODUCTION IN ANY MANNER WITHOUT THE WRITTEN PERMISSION OF INFINITE ELECTRONICS, INC. IS PROHIBITED. THESE COMMODITIES, TECHNOLOGY OR SOFTWARE WERE EXPORTED FROM THE UNITED STATES IN ACCORDANCE WITH THE EXPORT ADMINISTRATION REGULATIONS. DIVERSION CONTRARY TO U.S. LAW PROHIBITED.