

TRB 2-Slot Plug to Blunt Cut 1553 Cable 36"  
Using 124 Ohm TWC-124-2 Twinax



## LC3MSA00679-36

### Configuration

- Connector 1: TRB 2-Slot Plug
- Connector 2: Blunt Cut Genderless
- Cable Type: TWC-124-2

### Features

- 124 ohms
- Twinaxial
- MIL-STD-1553B
- -40°C to +80°C
- Lead Free Solder
- Standard and Custom Lengths Available

### Applications

- MIL-STD-1553B Applications
- Data Transmission

### Description

L-com's LC3MSA00679-36 is a TRB 2-Slot plug to blunt cut 1553 cable 36" using 124 Ohm TWC-124-2 twinax and ships same-day. These flexible RF cable assemblies are ideal for applications where flexure is required. Our L-com TRB 2-Slot to Blunt Cut cable assembly has a plug to genderless gender configuration with 78 Ohm flexible TWC-124-2 series coax and operates to 500 MHz.

Custom versions of this TRB 2-Slot plug to TRB 2-Slot genderless cable, along with the rest of L-com's other RF assemblies, can also be built and shipped same day. Other available RF cable assembly value added services from L-com include connector orientation or clocking, heat shrink booting and custom labeling. RF testing can also be performed to document the electrical performance of your cable assembly. Contact a sales representative for testing or custom RF cable quotes. Part number LC3MSA00679-36 L-com TRB 2-Slot Plug to Blunt Cut 1553 Cable 36" Using 124 Ohm TWC-124-2 Twinax data sheet PDF includes details of the RF product specifications, CAD drawing(s) and dimensions below.

### Electrical Specifications

Description	Minimum	Typical	Maximum	Units
Frequency Range	DC		500	MHz
Capacitance		12.3 [40.35]		pF/ft [pF/m]
Operating Voltage (AC)			1,000	Vrms

Insertion Loss (Typ.)

### Mechanical Specifications

#### Cable Assembly

Length*	36 in [914.4 mm]
Weight	0.363 lbs [164.65 g]

#### Cable

Cable Type	TWC-124-2
Impedance	124 Ohms
Inner Conductor Type	Stranded
Inner Conductor Material and Plating	Copper, Silver

TRB 2-Slot Plug to Blunt Cut 1553 Cable 36"  
Using 124 Ohm TWC-124-2 Twinax



## LC3MSA00679-36

Dielectric Type	PE
Shield Layer 1	Silver Plated Copper
Jacket Material	PVC, Blue
One Time Minimum Bend Radius	1.25 in [31.75 mm]

### Connectors

Description	Connector 1	Connector 2
Type	TRB 2-Slot Plug	Blunt Cut Genderless
Specification	MIL-STD-1553	
Impedance	78 Ohms	
Contact Material and Plating	Bronze, Gold 30 micro inches	
Contact Plating Specification	ASTM-B-488	
Dielectric Type	Teflon	
Outer Conductor Material and Plating	Phosphor Bronze, Gold	
Outer Conductor Plating Specification	30 micro inches	
Body Material and Plating	Brass, Nickel	
Body Plating Specification	ASTM-B-733	

### Environmental Specifications

#### Temperature

Operating Range -40 to +80 deg C

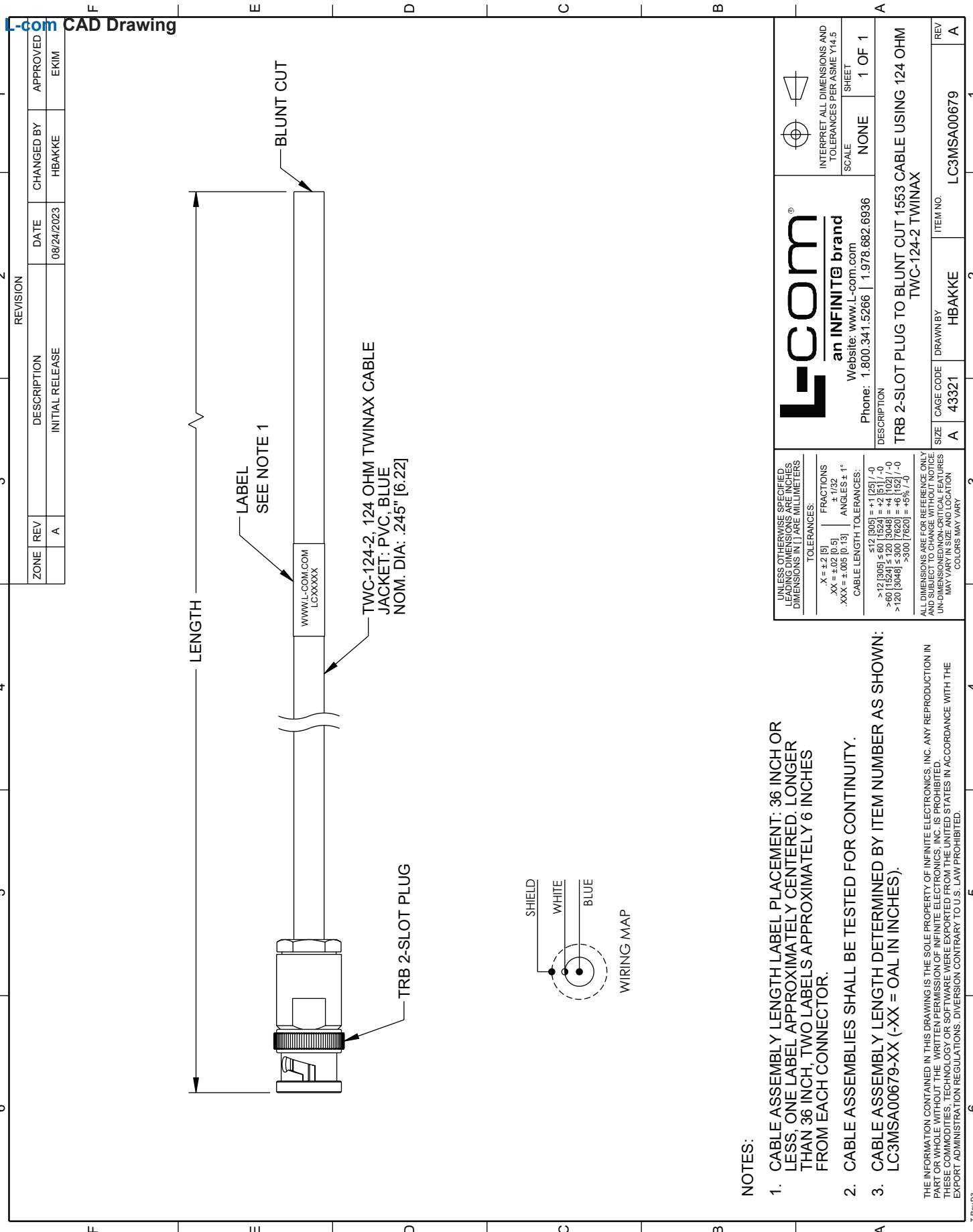
**Compliance Certifications** (see [product page](#) for current document)

### Plotted and Other Data

Notes:



TRB 2-Slot Plug to Blunt Cut 1553 Cable 36" Using 124 Ohm TWC-124-2 Twinax



NOTES:

1. CABLE ASSEMBLY LENGTH LABEL PLACEMENT: 36 INCH OR LESS, ONE LABEL APPROXIMATELY CENTERED. LONGER THAN 36 INCH, TWO LABELS APPROXIMATELY 6 INCHES FROM EACH CONNECTOR.
2. CABLE ASSEMBLIES SHALL BE TESTED FOR CONTINUITY.
3. CABLE ASSEMBLY LENGTH DETERMINED BY ITEM NUMBER AS SHOWN: LC3MSA00679-XX (-XX = OAL IN INCHES).

THE INFORMATION CONTAINED IN THIS DRAWING IS THE SOLE PROPERTY OF INFINITE ELECTRONICS, INC. ANY REPRODUCTION IN WHOLE OR IN PART WITHOUT THE WRITTEN PERMISSION OF INFINITE ELECTRONICS, INC. IS PROHIBITED. THESE COMMODITIES, TECHNOLOGY OR SOFTWARE WERE EXPORTED FROM THE UNITED STATES IN ACCORDANCE WITH THE EXPORT ADMINISTRATION REGULATIONS, DIVISION CONTRARY TO U.S. LAW PROHIBITED.

UNLESS OTHERWISE SPECIFIED, LEADING DIMENSIONS ARE IN INCHES, UNLESS OTHERWISE NOTED. DIMENSIONS IN [ ] ARE MILLIMETERS.		L-com® an INFINITE® brand Website: www.L-com.com Phone: 1.800.341.5266   1.978.682.6936		INTERPRET ALL DIMENSIONS AND TOLERANCES PER ASME Y14.5	
TOLERANCES:		FRACCTIONS		SCALE	
.X = ±.2 [5]		.XX = ±.02 [0.5]		NONE	
.XX = ±.005 [0.13]		± 1/32		SHEET	
ANGLES ± 1°		CABLE LENGTH TOLERANCES:		1 OF 1	
		<12 [305] ≤ 60 [1524] = +1 [25] / -0			
		>60 [1524] ≤ 120 [3048] = +4 [102] / -0			
		>120 [3048] ≤ 300 [7620] = +6 [152] / -0			
		>300 [7620] = +5% / -0			
ALL DIMENSIONS ARE FOR REFERENCE ONLY AND SUBJECT TO CHANGE WITHOUT NOTICE UNLESS OTHERWISE SPECIFIED. DIMENSIONS MAY VARY. COLORS MAY VARY.		DESCRIPTION		REV	
		TRB 2-SLOT PLUG TO BLUNT CUT 1553 CABLE USING 124 OHM TWC-124-2 TWINAX		A	
SIZE	CAGE CODE	DRAWN BY	ITEM NO.		
A	43321	HBAKKE	LC3MSA00679		