

Twinax Connector TRB 3-lug Bulkhead Jack Feedthru Non-Isolated



LCAD10-06567

Configuration

- TRB Jack Connector 1
- TRB Jack Connector 2
- Straight Body Geometry
- Bulkhead Mount Method

Features

- Non-Isolated

Mechanical Specifications

Size		
Length	1.29in	32.77mm]
Width	0.73in	[18.54mm]
Height	0.73in	[18.54mm]
Weight	0.05lbs	[22.68g]

Description	Connector 1	Connector 2
Type	TRB Jack	TRB Jack
Polarity	Standard	Standard
Interface Specification	MIL-STD-1553B	MIL-STD-1553B

Mechanical Specification Notes:

Non-Isolated

Material Specifications

Description	Connector 1		Connector 2	
	Material	Plating	Material	Plating
Type	TRB Jack		TRB Jack	
Contact	Beryllium Copper	Gold 30-40 µin	Beryllium Copper	Gold 30-40 µin
Insulation	PTFE		PTFE	
Outer Conductor	Brass	Gold 3-10 µin Gold	Brass	Gold 3-10 µin Gold
Body	Brass	Nickel over Copper 70-200 µin over 60-160 µin	Brass	Nickel over Copper 70-200 µin over 60-160 µin
Coupling Nut	Brass	Nickel 70-200 µin Nickel	Brass	Nickel 70-200 µin Nickel

Twinax Connector TRB 3-lug Bulkhead Jack Feedthru Non-Isolated

LCAD10-06567



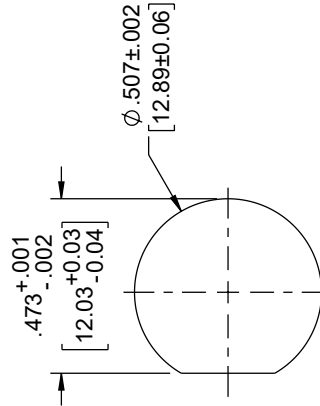
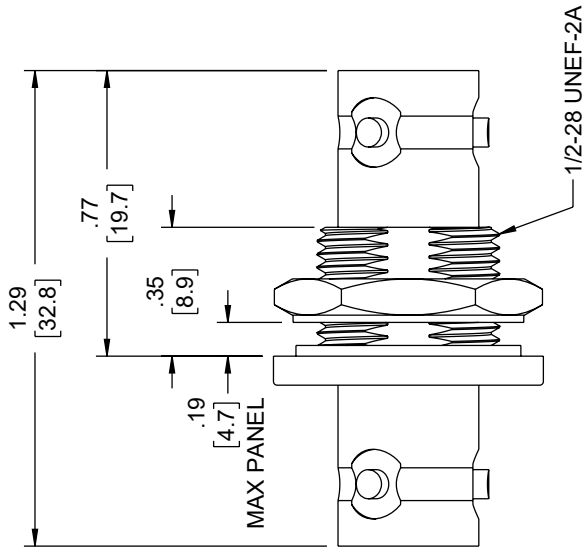
Compliance Certifications (see [product page](#) for current document)

Twinax Connector TRB 3-lug Bulkhead Jack Feedthru Non-Isolated from L-com has same day shipment for domestic and International orders. Our portfolio includes coaxial cable assemblies, connectors, adapters and custom products as well as lightning and surge protectors, NEMA rated enclosures, and an RF product line which includes antennas, amplifiers, passive, and active components. The information contained within this document is accurate to the best of our knowledge and representative of the part described herein. It may be necessary to make modifications to the part and/or the documentation of the part in order to impliment improvements. L-com reserves the right to make such changes as required. Unless otherwise stated, all specifications are nominal. L-com does not make any representation or warranty regarding the suitability of the part described herein for any particular purpose, and L-com does not assume liability arising out of the use of any part or document. The information contained within this document is accurate to the best of our knowledge and representative of the part described herein. It may be necessary to make modifications to the part and/or the documentation of the part in order to impliment improvements. L-com reserves the right to make such changes as required. Unless otherwise stated, all specifications are nominal. L-com does not make any representation or warranty regarding the suitability of the part described herein for any particular purpose, and L-com does not assume liability arising out of the use of any part or document.

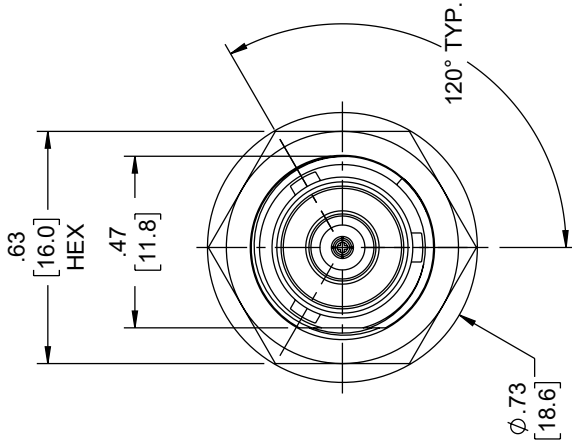
Twinax Connector TRB 3-lug Bulkhead Jack Feedthru Non-Isolated

L-com CAD Drawing

ZONE	REV	DESCRIPTION	DATE	CHANGED BY	APPROVED
A	A	INITIAL RELEASE	8/11/2023	KDANG	EKIM



RECOMMENDED MOUNTING HOLE



<p>L-com an INFINITE brand Website: www.L-com.com Phone: 1.800.341.5266 1.978.682.6936</p>		<p>INTERPRET ALL DIMENSIONS AND TOLERANCES PER ASME Y14.5 SCALE: NONE SHEET: 1 OF 1</p>
<p>DESCRIPTION: Twinaxial TRB 3-lug Bulkhead Jack Feedthru Non-Isolated</p>		
<p>UNLESS OTHERWISE SPECIFIED, LEADING DIMENSIONS ARE IN INCHES. DIMENSIONS IN [] ARE MILLIMETERS.</p> <p>TOLERANCES: X = ±2 [5] FRACTIONS ±1/32 ANGLES ±1° .XX = ±02 [0.5] .XXX = ±005 [0.13] CABLE LENGTH TOLERANCES: <12 [305] = +1 [25] / -0 >12 [305] < 20 [508] = +1 [25] / -0 >20 [508] < 30 [762] = +4 [102] / -0 >30 [762] < 60 [1524] = +6 [152] / -0 >60 [1524] < 300 [7620] = +6 [152] / -0 >300 [7620] = +5% / -0</p> <p>ALL DIMENSIONS ARE FOR REFERENCE ONLY AND SUBJECT TO CHANGE WITHOUT NOTICE UNLESS INDICATED OTHERWISE. UNLESS OTHERWISE SPECIFIED, DIMENSIONS MAY VARY IN SIZE AND LOCATION. COLORS MAY VARY.</p>	<p>ITEM NO. LCAD10-06567</p>	
<p>SIZE A</p>	<p>CAGE CODE 43321</p>	<p>REV A</p>

THE INFORMATION CONTAINED IN THIS DRAWING IS THE SOLE PROPERTY OF INFINITE ELECTRONICS, INC. ANY REPRODUCTION IN PART OR WHOLE WITHOUT THE WRITTEN PERMISSION OF INFINITE ELECTRONICS, INC. IS PROHIBITED. THESE COMMODITIES, TECHNOLOGY OR SOFTWARE WERE EXPORTED FROM THE UNITED STATES IN ACCORDANCE WITH THE EXPORT ADMINISTRATION REGULATIONS. DIVERSION CONTRARY TO U.S. LAW PROHIBITED.

T:Rev.02