

50 Ohm SMA Female to 75 Ohm F Male Adapter



LCAD9794

Configuration

- SMA Female Connector 1
- F Male Connector 2
- 50 Ohm, 75 Ohm
- Straight Body Geometry

Features

- Max VSWR of 1.5:1 up to 500 MHz
- SMA interface compliant with MIL-STD-348
- Type F interface compliant with MIL-C-39012
- Contact plating according to MIL-G-45204
- Gold Plated Contact

Applications

- Allows Connection Between Series
- General Purpose Test
- Allows Connection Between Series
- General Purpose Test

Description

L-com's LCAD9794 50 ohm SMA female to 75 ohm type F male adapter is part of our full line of RF components available for same-day shipping. The SMA connector mates mechanically with commercially available 3.5mm and 2.92mm (K) connectors. Our SMA to type F adapter has a female to male gender configuration. LCAD9794 SMA female to type F male adapter operates to 500 MHz. The L-com RF adapter provides good VSWR of 1.5:1 maximum.

RF adapters are often used to enable connections between two connector types that would otherwise not mate. Certain adapter configurations can also be used to protect connectors on expensive equipment where the number of connect/ disconnect cycles is high. An RF, microwave or millimeter wave adapter is connected to the equipment, and the commonly changed connection is made with the adapter which can be easily replaced when it wears out after high usage; such adapters are referred to as connector savers. L-com also offers bulkhead, panel mount, hermetically sealed, reverse polarity, and isolated ground adapter varieties to serve all of your RF, microwave and millimeter wave needs.

Electrical Specifications

| Description | Minimum | Typical | Maximum | Units |
|--------------------------------------|---------|----------------|---------|-------|
| Frequency Range | DC | | 500 | MHz |
| Impedance | | 50 Ohm, 75 Ohm | | |
| VSWR | | | 1.5:1 | |
| Operating Voltage (AC) | | | 500 | Vrms |
| Dielectric Withstanding Voltage (AC) | | | 1,500 | Vrms |
| Insulation Resistance | 5,000 | | | MOhms |

Electrical Specification Notes:
Values at 25°C, sea level.

Mechanical Specifications

Size

| | |
|--------|--------------------|
| Length | 0.96 in [24.38 mm] |
| Width | 0.44 in [11.18 mm] |
| Height | 0.44 in [11.18 mm] |
| Weight | 0.02 lbs [8.62 g] |

50 Ohm SMA Female to 75 Ohm F Male Adapter



LCAD9794

| Description | Connector 1 | Connector 2 |
|-------------------------|-------------|-------------|
| Type | SMA Female | F Male |
| Polarity | Standard | Standard |
| Interface Specification | MIL-STD-348 | MIL-C-39012 |
| Hex Size | | 7/16 in. |

Mechanical Specification Notes:

Not all "F" type connectors will mate with all "F" type connectors

There is no impedance transformation within this part : VSWR>1.50:1

Material Specifications

| Description | Connector 1 | | Connector 2 | |
|-----------------|------------------|---------------------|------------------|---------------------|
| | Material | Plating | Material | Plating |
| Type | SMA Female | | F Male | |
| Contact | Beryllium Copper | Gold MIL-G-45204 | Beryllium Copper | Gold MIL-G-45204 |
| Insulation | PTFE | | PTFE | |
| Outer Conductor | Brass | Nickel QQ-N-290 | | |
| Body | | | Brass | Nickel QQ-N-290 |
| Coupling Nut | | | Brass | Nickel QQ-N-290 |

Environmental Specifications

Temperature

Operating Range -65 to +165 °C

Compliance Certifications (see [product page](#) for current document)

Plotted and Other Data

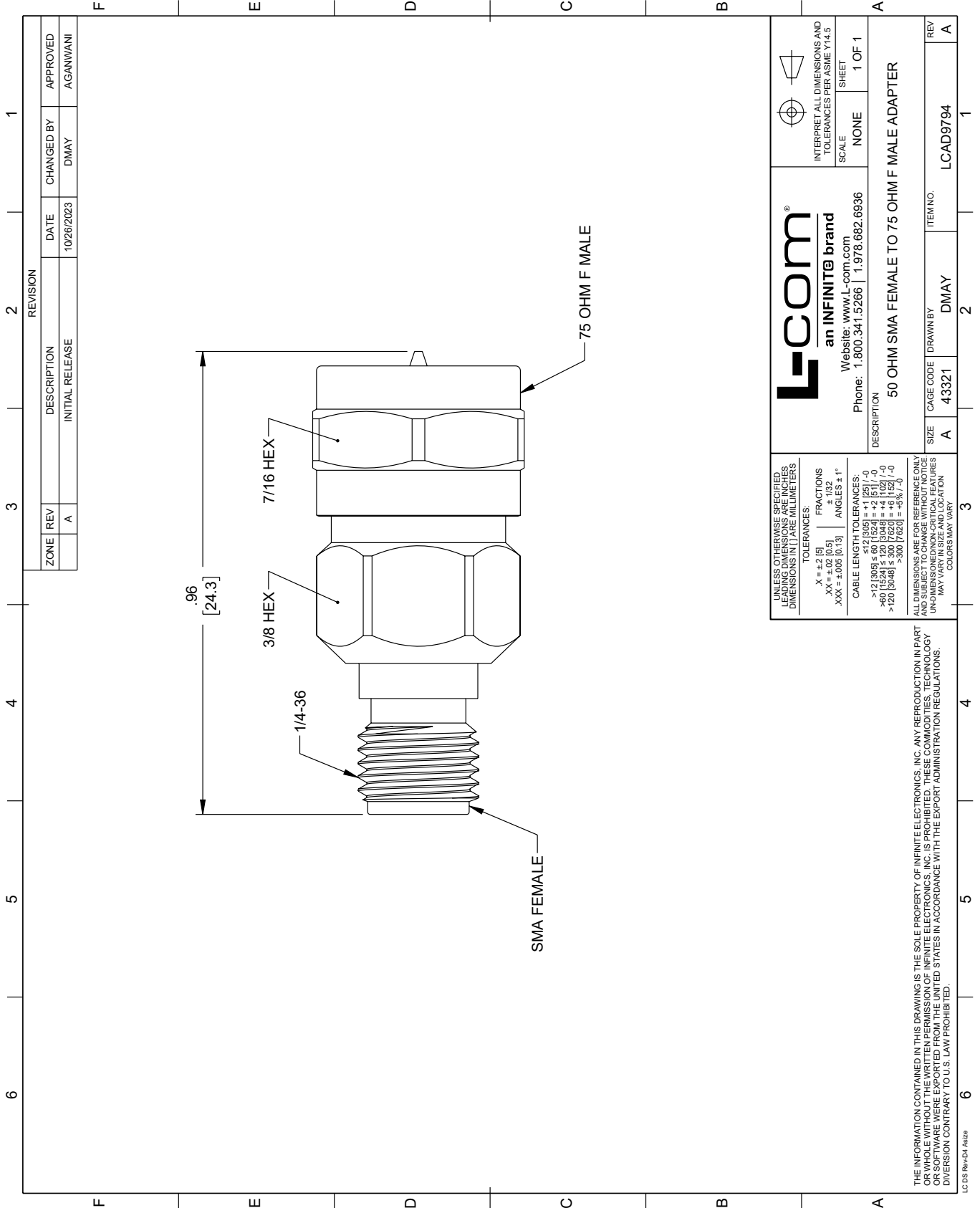
50 Ohm SMA Female to 75 Ohm F Male Adapter from L-com has same day shipment for domestic and International orders. Our portfolio includes coaxial cable assemblies, connectors, adapters and custom products as well as lightning and surge protectors, NEMA rated enclosures, and an RF product line which includes antennas, amplifiers, passive, and active components.

URL: <https://www.l-com.com/sma-male-f-female-straight-adapter-lcad9794-p.aspx>


The information contained within this document is accurate to the best of our knowledge and representative of the part described herein. It may be necessary to make modifications to the part and/or the documentation of the part in order to implement improvements. L-com reserves the right to make such changes as required. Unless otherwise stated, all specifications are nominal. L-com does not make any representation or warranty regarding the suitability of the part described herein for any particular purpose, and L-com does not assume liability arising out of the use of any part or document.

LCAD9794 CAD Drawing

50 Ohm SMA Female to 75 Ohm F Male Adapter



| REVISION | | DATE | CHANGED BY | APPROVED | |
|----------|-----|-----------------|------------|------------|----------|
| ZONE | REV | DESCRIPTION | DATE | CHANGED BY | APPROVED |
| | A | INITIAL RELEASE | 10/26/2023 | DMAY | AGANWANI |

| | | |
|--|-----------|--|
|  an INFINITE brand Website: www.L-com.com Phone: 1.800.341.5266 1.978.682.6936 | | INTERPRET ALL DIMENSIONS AND TOLERANCES PER ASME Y14.5 SCALE: NONE SHEET: 1 OF 1 |
| DESCRIPTION: 50 OHM SMA FEMALE TO 75 OHM F MALE ADAPTER | | |
| SIZE | CAGE CODE | ITEM NO. |
| A | 43321 | LCAD9794 |

UNLESS OTHERWISE SPECIFIED, LEADING DIMENSIONS ARE IN INCHES. DIMENSIONS IN [] ARE MILLIMETERS.

TOLERANCES:
 .X = ±.2 [5] FRACTIONS ± 1/32
 .XX = ±.02 [0.5] ANGLES ± 1°
 .XXX = ±.005 [0.13]

CABLE LENGTH TOLERANCES:
 <12 [305] ±.60 [15.24] = ±.2 [5] / -0
 >12 [305] ≤ 60 [1524] = ±.4 [10.2] / -0
 >60 [1524] ≤ 120 [3048] = ±.4 [10.2] / -0
 >120 [3048] ≤ 300 [7620] = ±.6 [15.24] / -0
 >300 [7620] = ±.8 [20.32] / -0

ALL DIMENSIONS ARE FOR REFERENCE ONLY. UNDIMENSIONED/NON-CRITICAL FEATURES MAY VARY IN SIZE AND LOCATION. COLORS MAY VARY.

THE INFORMATION CONTAINED IN THIS DRAWING IS THE SOLE PROPERTY OF INFINITE ELECTRONICS, INC. ANY REPRODUCTION IN PART OR WHOLE WITHOUT THE WRITTEN PERMISSION OF INFINITE ELECTRONICS, INC. IS PROHIBITED. THESE COMMODITIES, TECHNOLOGY OR SERVICES ARE EXPORTED FROM THE UNITED STATES IN ACCORDANCE WITH THE EXPORT ADMINISTRATION REGULATIONS. DIVERSION CONTRARY TO U.S. LAW PROHIBITED.

LC 05 Rev-D4 Asize