

Triax TRB 4 Lug Bulkhead Jack Feedthrough non-insulated Barrel Front Mount Panel Jack



## LCADMSB00006

### Configuration

- TRB 4-Lug Jack Connector 1
- TRB 4-Lug Jack Connector 2
- Straight Body Geometry
- Bulkhead Mount Method

### Features

- Non-Isolated

### Mechanical Specifications

| Size   |         |           |
|--------|---------|-----------|
| Length | 1.29in  | 32.77mm]  |
| Width  | 0.73in  | [18.54mm] |
| Height | 0.73in  | [18.54mm] |
| Weight | 0.01lbs | [4.54g]   |

| Description             | Connector 1    | Connector 2    |
|-------------------------|----------------|----------------|
| Type                    | TRB 4-Lug Jack | TRB 4-Lug Jack |
| Polarity                | Standard       | Standard       |
| Interface Specification | MIL-STD-1553B  | MIL-STD-1553B  |

Mechanical Specification Notes:

Isolated

### Material Specifications

| Description     | Connector 1      |         | Connector 2      |         |
|-----------------|------------------|---------|------------------|---------|
|                 | Material         | Plating | Material         | Plating |
| Type            | TRB 4-Lug Jack   |         | TRB 4-Lug Jack   |         |
| Insulation      | PTFE             |         | PTFE             |         |
| Outer Conductor | Beryllium Copper | Gold    | Beryllium Copper | Gold    |
| Body            | Brass            | Nickel  | Brass            | Nickel  |
| Coupling Nut    | Brass            | Nickel  | Brass            | Nickel  |

**Compliance Certifications** (see [product page](#) for current document)

Triax TRB 4 Lug Bulkhead Jack Feedthrough non-insulated Barrel Front Mount Panel Jack from L-com has same day shipment for domestic and International orders. Our portfolio includes coaxial cable assemblies, connectors, adapters and custom products as well

Triax TRB 4 Lug Bulkhead Jack Feedthrough non-insulated Barrel Front Mount Panel Jack

**LCADMSB00006**

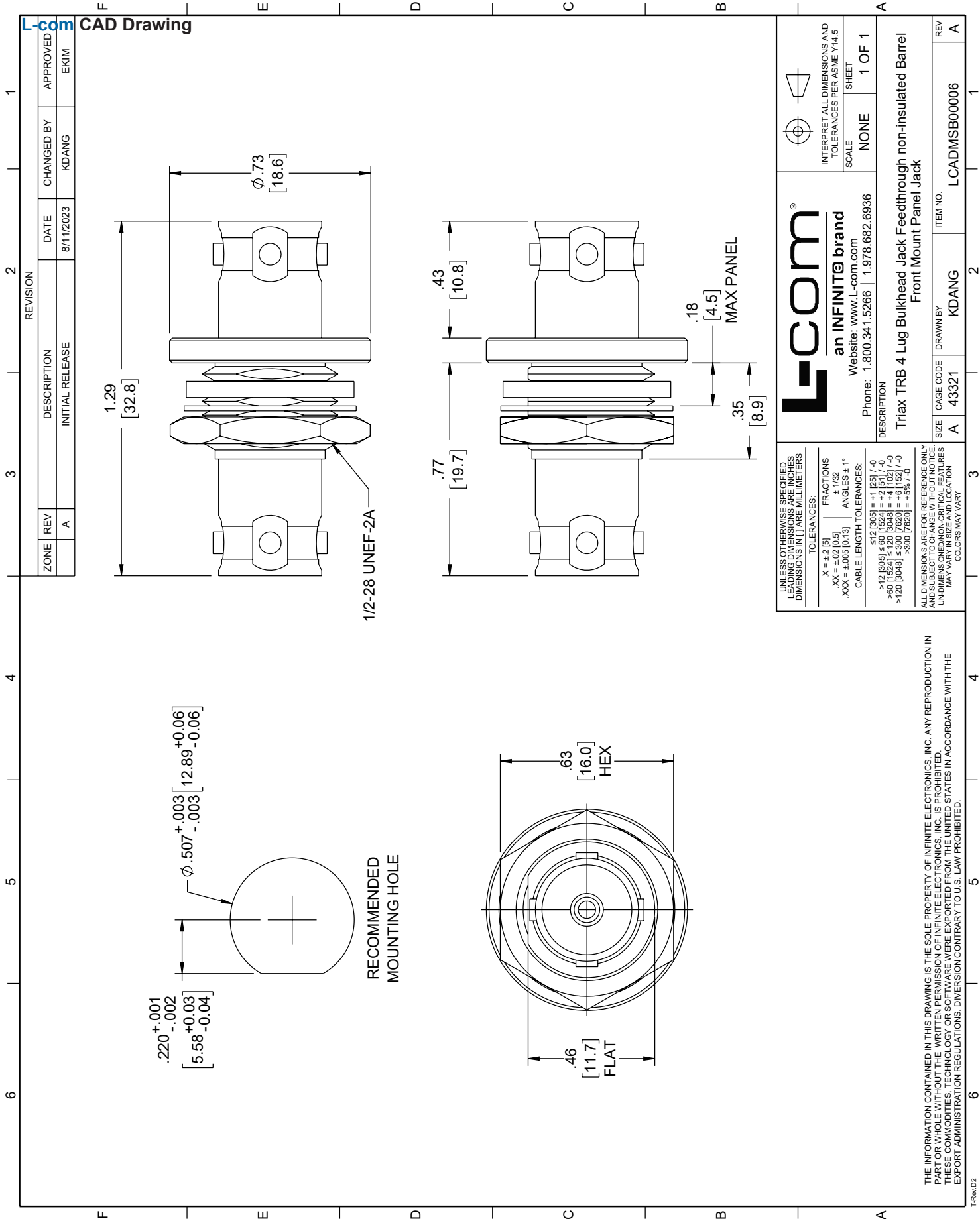


as lightning and surge protectors, NEMA rated enclosures, and an RF product line which includes antennas, amplifiers, passive, and active components. The information contained within this document is accurate to the best of our knowledge and representative of the part described herein. It may be necessary to make modifications to the part and/or the documentation of the part in order to impliment improvements. L-com reserves the right to make such changes as required. Unless otherwise stated, all specifications are nominal. L-com does not make any representation or warranty regarding the suitability of the part described herein for any particular purpose, and L-com does not assume liability arising out of the use of any part or document.

The information contained within this document is accurate to the best of our knowledge and representative of the part described herein. It may be necessary to make modifications to the part and/or the documentation of the part in order to impliment improvements. L-com reserves the right to make such changes as required. Unless otherwise stated, all specifications are nominal. L-com does not make any representation or warranty regarding the suitability of the part described herein for any particular purpose, and L-com does not assume liability arising out of the use of any part or document.

Triax TRB 4 Lug Bulkhead Jack Feedthrough non-insulated Barrel Front Mount Panel Jack

L-com CAD Drawing



| ZONE | REV | DESCRIPTION     | DATE      | CHANGED BY | APPROVED |
|------|-----|-----------------|-----------|------------|----------|
|      | A   | INITIAL RELEASE | 8/11/2023 | KDANG      | EKIM     |

|   |                  |   |
|---|------------------|---|
| <p><b>L-com</b><br/>an INFINITE brand<br/>Website: www.L-com.com<br/>Phone: 1.800.341.5266   1.978.682.6936</p> |                  | <p>INTERPRET ALL DIMENSIONS AND TOLERANCES PER ASME Y14.5</p> <p>SCALE: NONE</p> <p>SHEET: 1 OF 1</p> |
| <p>DESCRIPTION: Triax TRB 4 Lug Bulkhead Jack Feedthrough non-insulated Barrel Front Mount Panel Jack</p>       |                  |   |
| SIZE: A   | CAGE CODE: 43321 | ITEM NO.: LCADMSB00006  |
| REV: A  | DRAWN BY: KDANG  |   |

UNLESS OTHERWISE SPECIFIED LEADING DIMENSIONS ARE IN INCHES DIMENSIONS IN [ ] ARE MILLIMETERS

TOLERANCES:

X = ±2 [5] FRACTIONS ±1/32 ANGLES ±1°  
 .XX = ±0.02 [0.5] .XXX = ±0.005 [0.13]

CABLE LENGTH TOLERANCES:

<12 [305] = +1 [25] / -0  
 >12 [305] < 120 [3048] = ±4 [102] / 0  
 >120 [3048] < 300 [7620] = +6 [152] / -0  
 >300 [7620] = +5% / -0

ALL DIMENSIONS ARE FOR REFERENCE ONLY AND SUBJECT TO CHANGE WITHOUT NOTICE UNDIMENSIONED NON-CRITICAL FEATURES MAY VARY IN SIZE AND LOCATION COLORS MAY VARY

THE INFORMATION CONTAINED IN THIS DRAWING IS THE SOLE PROPERTY OF INFINITE ELECTRONICS, INC. ANY REPRODUCTION IN PART OR WHOLE WITHOUT THE WRITTEN PERMISSION OF INFINITE ELECTRONICS, INC. IS PROHIBITED. THESE COMMODITIES, TECHNOLOGY OR SOFTWARE WERE EXPORTED FROM THE UNITED STATES IN ACCORDANCE WITH THE EXPORT ADMINISTRATION REGULATIONS. DIVERSION CONTRARY TO U.S. LAW PROHIBITED.