

GPS Active Antenna, 1597 MHz to 1607 MHz, 10dBic,
Linear Polarization Small SMA mount



LCANGPS1009

Features

- Low Profile
- Embedded Low Noise Amplifier
- MIL-STD-810G
- Linearly Polarized
- 10 dBic Gain
- SMA Male
- IP67 Rated
- Operating Frequency Range 1559 MHz to 1610 MHz
- Operating Voltage 3.3 Vdc

Applications

- Military, Law Enforcement, or Private Security
- Hand-held/Portable Devices
- Asset and Fleet Tracking
- Scientific Instrumentation
- Oil, Gas, and Mining Industries
- M2M Applications
- GPS L1, GALLILEO E1, AND GLONASS

Description

L-Com's Active GNSS Antenna LCANGPS1009 is Linearly polarized and conforms to MIL-STD-810G. The LCANGPS1009 is an active GPS L1 band antenna with 10 dBic Gain. These Mil Spec active GNSS antenna units are ideally suited for use in rugged terrain where low profile, low drag, bullet style antennas are needed.

Our GNSS antenna specialists are ready and available to answer any questions you may have on the LCANGPS1009. This high quality multi-standard SMA male antenna meets GPS L1, GALLILEO E1 and GLONASS G1 requirements by operating in the 1559MHz to 1610MHz frequency range.

The LCANGPS1009 GNSS antenna series from L-Com are designed for portable, hand-held, or mobile devices which receive GNSS signals from satellite constellations to triangulate geolocations for navigation, tracking, surveying, mobile network timing, or munitions targeting. Order your Active GNSS LCANGPS1009 Antenna from L-Com today. There is no MOQ (minimum order quantity) and the product ships same day from our warehouse.

Configuration

Design	GPS/GNSS Active
Band Type	Single
Polarization	Linear, Vertical
Connector Type	SMA Male

Electrical Specifications

Description	Minimum	Typical	Maximum	Units
Frequency Range	1,597		1,607	MHz
Output VSWR			2.5:1	
Impedance		50		Ohms
Gain	10			dBic
Noise Figure		0.55		dB
Operating DC Voltage	2		3.5	Volts

Click the following link (or enter part number in "SEARCH" on website) to obtain additional part information including price, inventory and certifications:
[GPS Active Antenna, 1597 MHz to 1607 MHz, 10dBic, Linear Polarization Small SMA mount LCANGPS1009](#)

GPS Active Antenna, 1597 MHz to 1607 MHz, 10dBic,
Linear Polarization Small SMA mount



LCANGPS1009

Current	3.8	mA
---------	-----	----

Mechanical Specifications

Radome Material	Polyetherimide
Size	
Length	1.34 in [34.04 mm]
Weight	0.01 lbs [4.54 g]

Environmental Specifications

Temperature	
Operating Range	-40 to +71 deg C
Storage Range	-40 to +85 deg C
Environment	MIL-STD-810G
Humidity	MIL-STD-810G, Meth 507.5, Proc. II, 95% Relative Humidity
Shock	MIL-STD-810G
Vibration	MIL-STD-810G
Corrosion	MIL-STD-810G, Meth 509.5, 4 x 24 h
Altitude	MIL-STD-810G

Environmental Specification Notes:

- Operating Temp MIL-STD-810G, Meth. 501.5 & 502.5, Proc.II. Storage Temp MIL-STD-810G, Meth. 501.5 & 502.5, Proc. I.

Compliance Certifications (see [product page](#) for current document)

Plotted and Other Data

Notes:

GPS Active Antenna, 1597 MHz to 1607 MHz, 10dBic,
Linear Polarization Small SMA mount



LCANGPS1009

ELECTRICAL PERFORMANCES

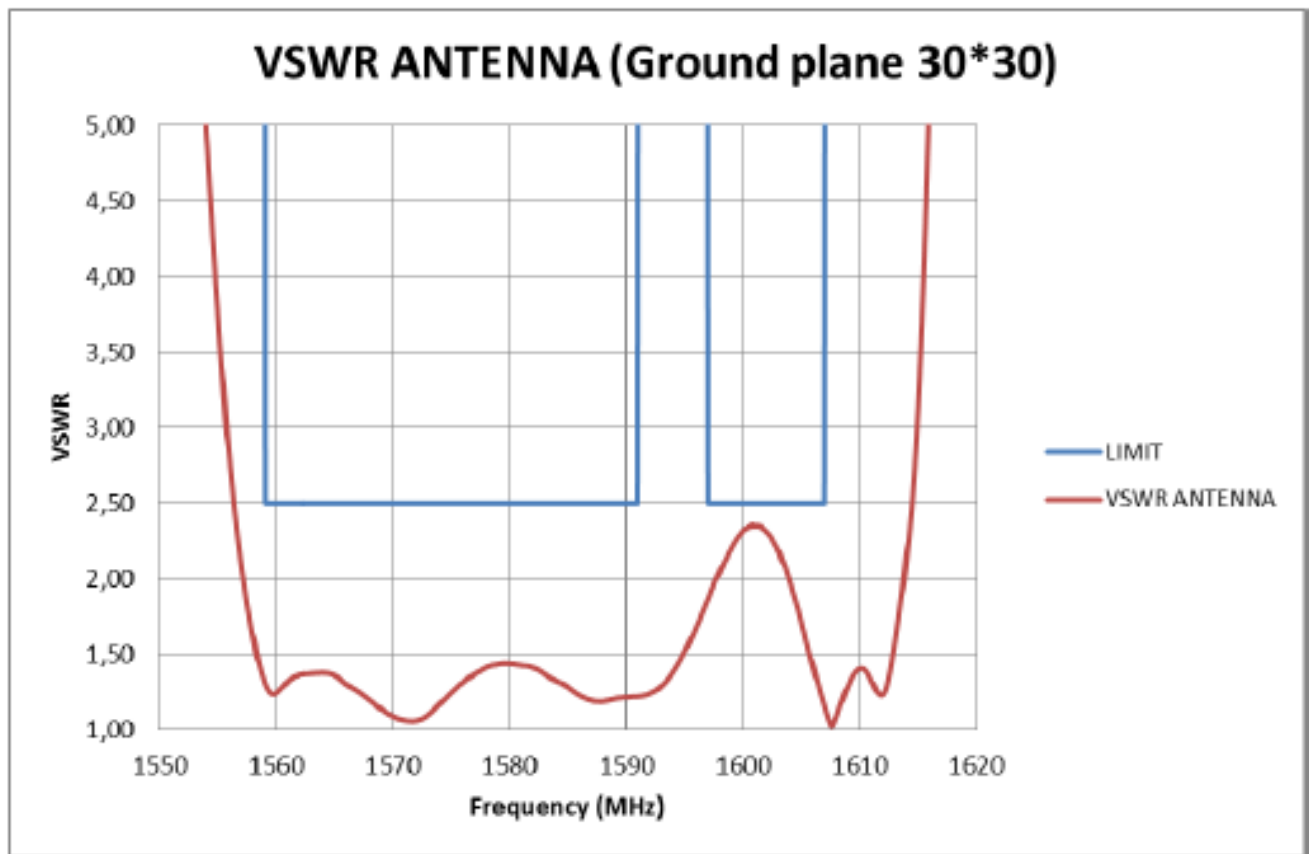


Figure 1: VSWR

GPS Active Antenna, 1597 MHz to 1607 MHz, 10dBic,
Linear Polarization Small SMA mount



LCANGPS1009

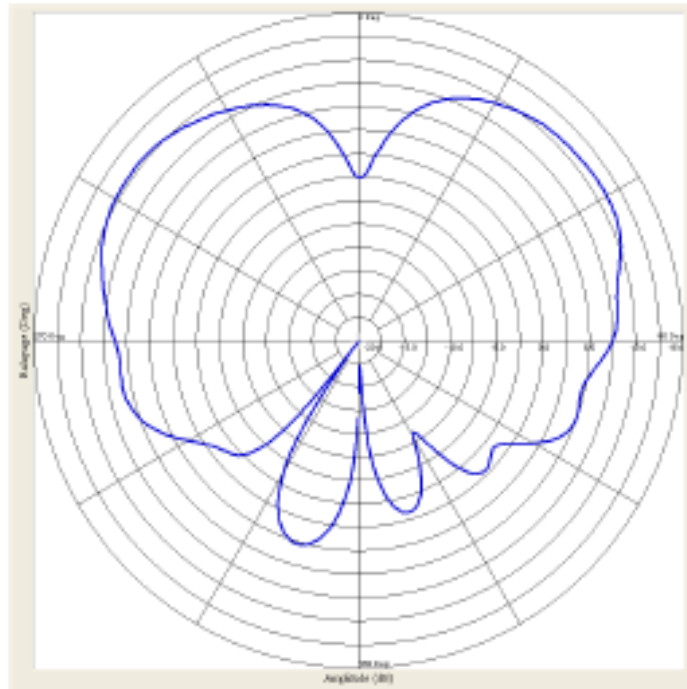
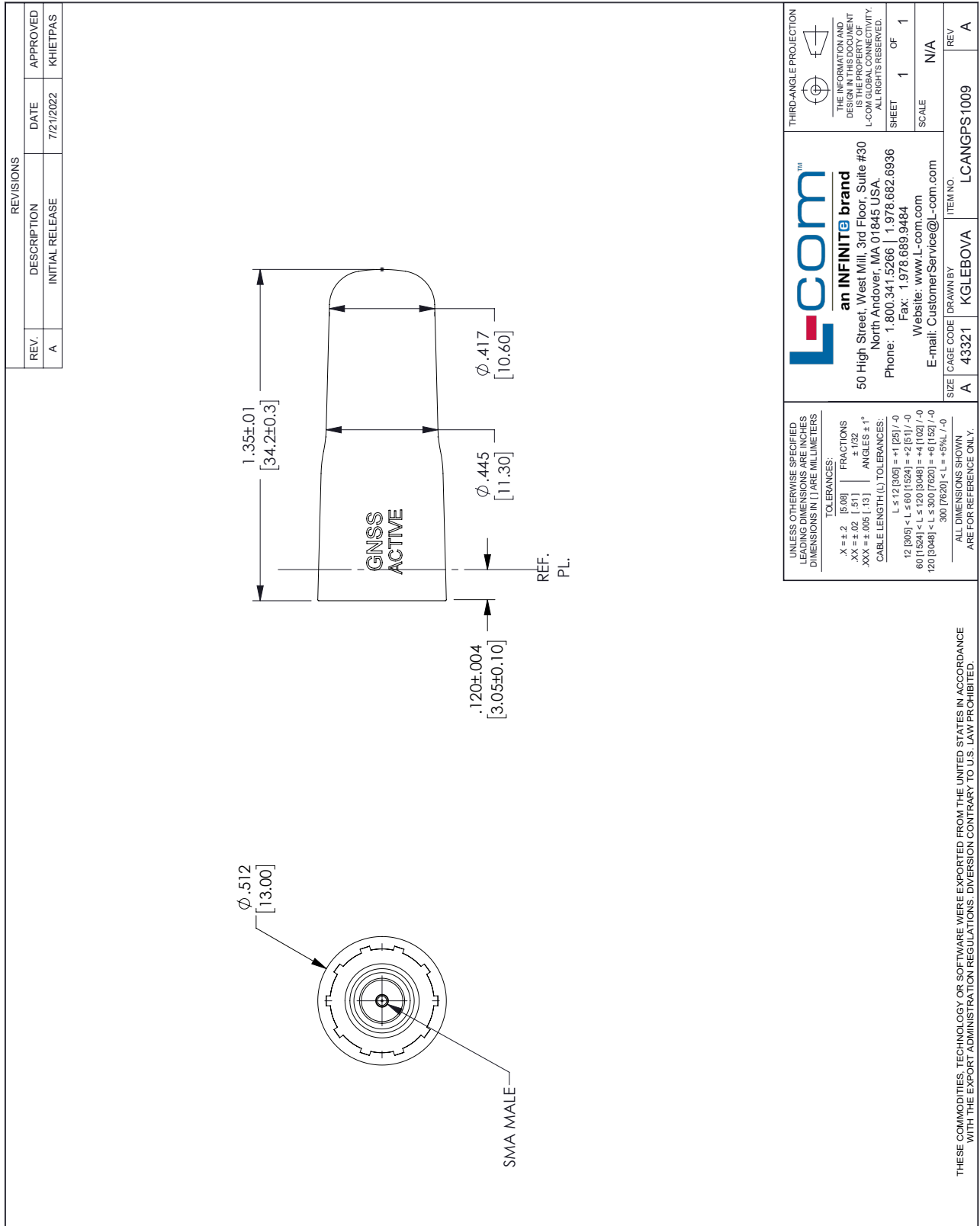


Figure 2: Radiation pattern on ground plane at 1575 MHz (RHCP)

GPS Active Antenna, 1597 MHz to 1607 MHz, 10dBic, Linear Polarization Small SMA mount from L-com has same day shipment for domestic and International orders. Our portfolio includes coaxial cable assemblies, connectors, adapters and custom products as well as lightning and surge protectors, NEMA rated enclosures, and an RF product line which includes antennas, amplifiers, passive, and active components.

The information contained within this document is accurate to the best of our knowledge and representative of the part described herein. It may be necessary to make modifications to the part and/or the documentation of the part in order to impliment improvements. L-com reserves the right to make such changes as required. Unless otherwise stated, all specifications are nominal. L-com does not make any representation or warranty regarding the suitability of the part described herein for any particular purpose, and L-com does not assume liability arising out of the use of any part or document.

L-com CAD Drawing



UNLESS OTHERWISE SPECIFIED LEADING DIMENSIONS ARE INCHES DIMENSIONS IN [] ARE MILLIMETERS

TOLERANCES:

X = ± .2	[5.08]	FRACTIONS	
.XX = ± .02	[.51]		± 1/32
.XXX = ± .005	[.13]		ANGLES ± 1°

CABLE LENGTH (L) TOLERANCES:

L ≤ 12 [305]	± L	+1 [25] / -0
12 [305] < L ≤ 60 [1524]	± L	+2 [51] / -0
60 [1524] < L ≤ 120 [3048]	± L	+4 [102] / -0
120 [3048] < L ≤ 300 [7620]	± L	+6 [152] / -0
300 [7620] < L ≤ +5%		L - 0

ALL DIMENSIONS SHOWN ARE FOR REFERENCE ONLY.

THIRD-ANGLE PROJECTION

THE INFORMATION AND DESIGN ARE THE PROPERTY OF L-COM GLOBAL CONNECTIVITY. ALL RIGHTS RESERVED.

SHEET 1 OF 1

SCALE N/A

an INFINITe brand
 50 High Street, West Mill, 3rd Floor, Suite #30
 North Andover, MA 01845 USA.
 Phone: 1.800.341.5266 | 1.978.682.6936
 Fax: 1.978.689.9484
 Website: www.L-com.com
 E-mail: CustomerService@L-com.com

SIZE A CAGE CODE 43321 DRAWN BY KGLEBOVA ITEM NO. LCANGPS1009 REV A

THESE COMMODITIES, TECHNOLOGY OR SOFTWARE WERE EXPORTED FROM THE UNITED STATES IN ACCORDANCE WITH THE EXPORT ADMINISTRATION REGULATIONS. DIVERSION CONTRARY TO U.S. LAW PROHIBITED.

T-Rev.D