

144, 430 MHz Omni Antenna 5.5 dBi Gain, NMO Connector, Stainless Steel Reflector



## LCANOM1085

### Features

- Vertically Polarized
- 5.5 dBi Gain
- NMO Connector
- Stainless Steel
- 1.5:1 VSWR Max
- 50 Watt Max Input Power

### Applications

- Offroad/Overland Vehicles
- Mining/Industrial Heavy Equipment
- Commercial Trucking
- Fleet Management
- Farm Equipment

### Description

The L-com LCANOM1085 is a dual band antenna that ships on the same day as ordered. Our vertical polarized antenna with 144 to 430 MHz frequency range has a NMO male connectors. This antenna made of stainless steel has an overall length of 35.04 in, a width of 2 in, and a weight of 0.55 lbs.

L-com's LCANOM1085 is a dual band antenna operating from 144 to 430 MHz with 5.5 dBi gain. The omni directional antenna has a maximum input VSWR of 1.5:1.

L-com has one of the largest in-stock collections of omni directional antennas with our wide selection of superior quality RF parts, that ship same day. Make your online purchase right now to take advantage of our same-day shipping. For further information on similar products, our expert technical support and knowledgeable sales team can help you get the ideal dual band antenna as per your requirement.

### Configuration

Band Type	Dual
Radiation Pattern	Omni Directional
Polarization	Vertical
Connector Type	NMO

### Electrical Specifications

Description	Minimum	Typical	Maximum	Units
Frequency Range	143		432	MHz
Input VSWR			1.5:1	
Impedance		50		Ohms
Gain		5.5		dBi
Input Power			50	Watts

### Specifications by Band

Click the following link (or enter part number in "SEARCH" on website) to obtain additional part information including price, inventory and certifications:  
[144, 430 MHz Omni Antenna 5.5 dBi Gain, NMO Connector, Stainless Steel Reflector LCANOM1085](#)

144, 430 MHz Omni Antenna 5.5 dBi Gain, NMO Connector, Stainless Steel Reflector



**LCANOM1085**

Description	Band 1	Band 2	Band 3	Band 4	Band 5	Units
Range	0.143 to 0.145	0.428 to 0.432				GHz
Gain	5.5	5.5				dBi
VSWR Max	2:1	2:1				
Maximum Input Power	100	100				Watts

**Mechanical Specifications**

Radome Material	Stainless Steel
<b>Size</b>	
Length	35.04 in [890.02 mm]
Width	2 in [50.8 mm]
Height	2 in [50.8 mm]
Weight	0.55 lbs [249.48 g]

**Environmental Specifications**

<b>Temperature</b>	
Operating Range	-40 to +80 deg C

**Compliance Certifications** (see [product page](#) for current document)

**Plotted and Other Data**

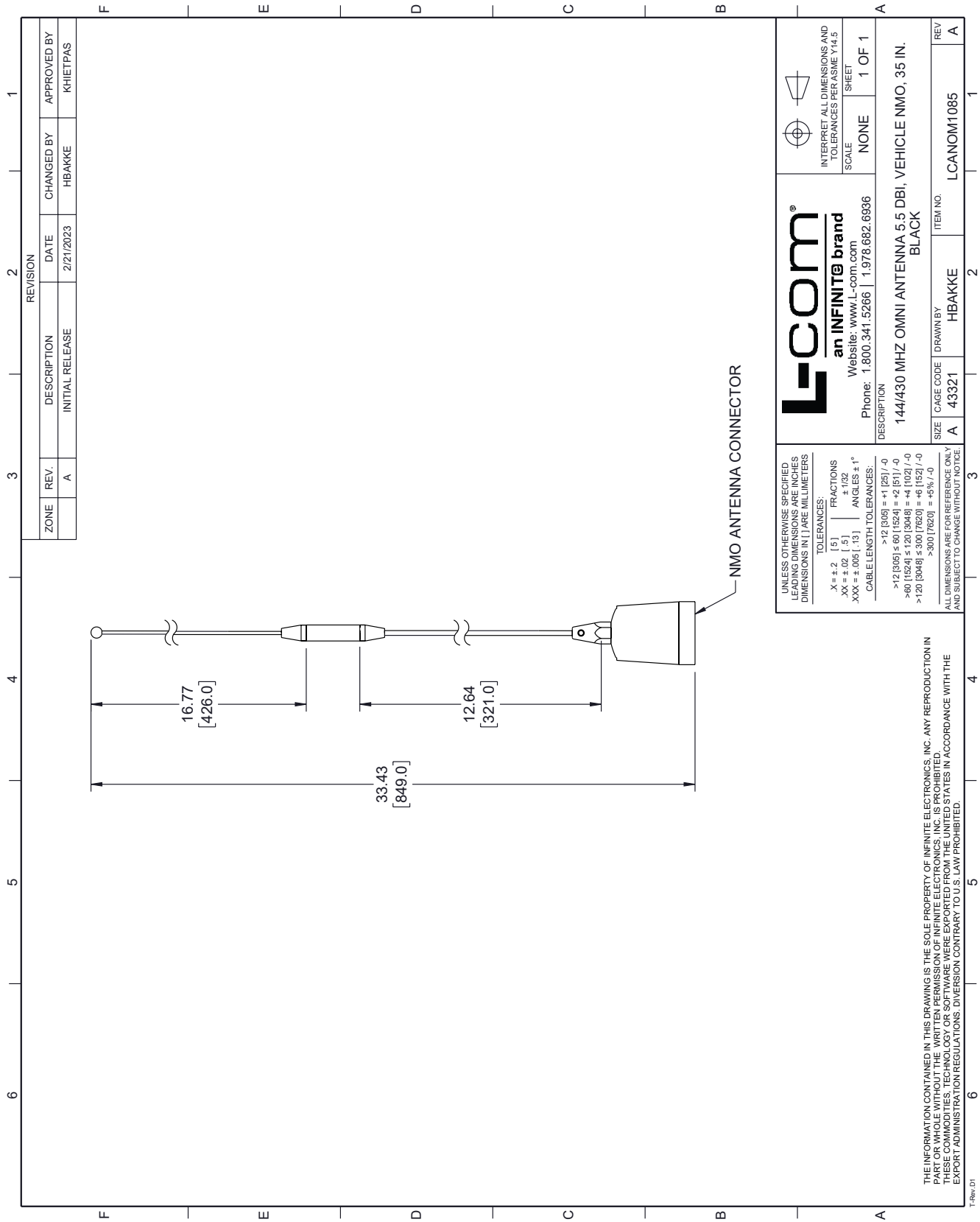
Notes:

144, 430 MHz Omni Antenna 5.5 dBi Gain, NMO Connector, Stainless Steel Reflector from L-com has same day shipment for domestic and International orders. Our portfolio includes coaxial cable assemblies, connectors, adapters and custom products as well as lightning and surge protectors, NEMA rated enclosures, and an RF product line which includes antennas, amplifiers, passive, and active components.

The information contained within this document is accurate to the best of our knowledge and representative of the part described herein. It may be necessary to make modifications to the part and/or the documentation of the part in order to impliment improvements. L-com reserves the right to make such changes as required. Unless otherwise stated, all specifications are nominal. L-com does not make any representation or warranty regarding the suitability of the part described herein for any particular purpose, and L-com does not assume liability arising out of the use of any part or document.

144, 430 MHz Omni Antenna 5.5 dBi Gain, NMO Connector, Stainless Steel Reflector

L-com CAD Drawing



REVISION			
ZONE	REV.	DESCRIPTION	DATE
	A	INITIAL RELEASE	2/21/2023

APPROVED BY	CHANGED BY
KHIETPAS	HBAKKE

<p><b>L-com</b> an INFINITE brand Website: <a href="http://www.L-com.com">www.L-com.com</a> Phone: 1.800.341.5266   1.978.682.6936</p>		<p>INTERPRET ALL DIMENSIONS AND TOLERANCES PER ASME Y14.5 SCALE: NONE SHEET: 1 OF 1</p>
<p>DESCRIPTION 144/430 MHZ OMNI ANTENNA 5.5 DBI, VEHICLE NMO, 35 IN. BLACK</p>		
SIZE	CAGE CODE	ITEM NO.
A	43321	HBAKKE
DRAWN BY		REV
HBAKKE		A

UNLESS OTHERWISE SPECIFIED, LEADING DIMENSIONS ARE INCHES DIMENSIONS IN [ ] ARE MILLIMETERS

TOLERANCES:

X = +.2 [5] FRACTIONS  
XX = +.02 [5] ANGLES ± 1°  
XXX = ±.005 [13]

CABLE LENGTH TOLERANCES:

> 12 [305] ± .001 [25] / -0  
> 60 [1524] ± .001 [25] / -0  
> 120 [3048] ± .001 [25] / -0  
> 300 [7620] ± .001 [25] / -0

ALL DIMENSIONS ARE FOR REFERENCE ONLY AND SUBJECT TO CHANGE WITHOUT NOTICE

THE INFORMATION CONTAINED IN THIS DRAWING IS THE SOLE PROPERTY OF INFINITE ELECTRONICS, INC. ANY REPRODUCTION IN PART OR WHOLE WITHOUT THE WRITTEN PERMISSION OF INFINITE ELECTRONICS, INC. IS PROHIBITED. THESE COMMODITIES, TECHNOLOGY OR SOFTWARE WERE EXPORTED FROM THE UNITED STATES IN ACCORDANCE WITH THE EXPORT ADMINISTRATION REGULATIONS. DIVERSION CONTRARY TO U.S. LAW PROHIBITED.

T-Rev: 01