

1.8 dBi, UHF Rubber Duck Antenna, 448-481 MHz, SMA Female Connector, Vertical Polarization



LCANRBD1000

Features

- 448 MHz to 481 MHz, 1.8 dBi Gain
- SMA-Female connector
- Heliflex whip antenna
- Plug and play
- 20W power handling
- VSWR < 2:1
- Vertical polarization

Applications

- PtP or PtMP applications
- Trunking for two-way radio comms
- UHF applications
- Public Safety / Emergency services
- Tetra and P-25 applications exclusively supported
- Land and Private mobile radio (LMR) (PMR)
- Fixed and mobile services

Description

The LCANRBD1000 rubber duck antenna from L-com is part of our extensive line of directional antennas that we offer with global same-day shipping from our facilities certified to ISO 9001:2015. L-com's high-quality single-band rubber duck antenna has a 1.8 dBi nominal gain and can be procured with no order limit. This rubber duck single-band 1.8 dBi antenna has a frequency range of 448 MHz to 481 MHz.

We lead the industry in supplying products like this 448 MHz to 481 MHz single-band antenna, along with other RF, microwave, and millimeter wave components. This rubber duck antenna from L-com uses a SMA connector and has a maximum input power of 20 watts. Use our single-band rubber duck antenna with vertical polarization for fixed and mobile services, public safety or emergency services, trunking for two-way radio communications, land and private mobile radio (LMR) (PMR), PtP or PtMP, tetra, and P-25 applications.

L-com's rubber duck antenna with 1.8 dBi gain has a SMA-type female connector. This SMA-series female connectorized omnidirectional antenna is 0.5 inches tall, 0.5 inches wide, and 5.11 inches long. The LCANRBD1000 UHF antenna has 360-degrees of horizontal and 90-degrees of vertical HPBW. Our high-quality antenna has a maximum input VSWR (voltage standing wave ratio) of 2:1.

L-com's 50 Ohms impedance antenna can operate at temperatures ranging from -40 °C to 60 °C. This single-band rubber duck antenna is offered with expert technical support, PDF datasheets, and CAD drawings with dimensions and specifications. Order your 1.8 dBi UHF rubber duck antennas now and enjoy our international or domestic same-day shipping.

Configuration

Design	Rubber Duck
Band Type	Single
Radiation Pattern	Omni Directional
Polarization	Vertical
Connector Type	SMA Female

Electrical Specifications

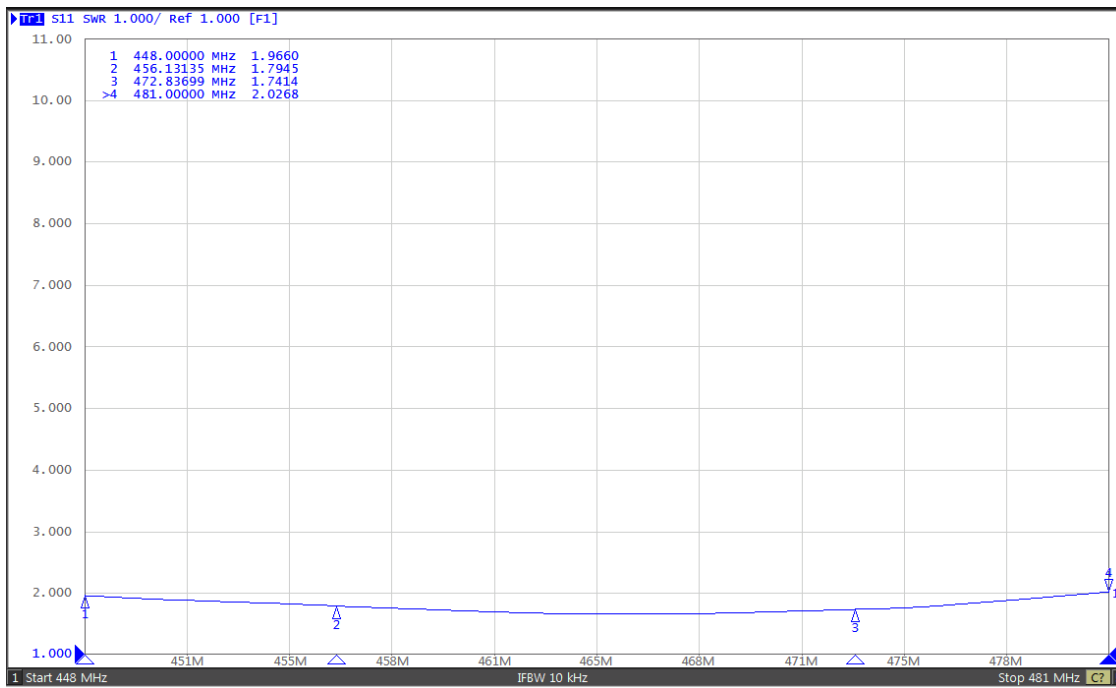
Description	Minimum	Typical	Maximum	Units
Frequency Range	448		481	MHz
Input VSWR			2:1	
Impedance		50		Ohms
Gain		1.8		dBi
Horizontal (Azimuth) HPBW		360		Omnidirectional Degrees
Vertical (Elevation) HPBW		90		Degrees
Input Power			20	Watts

1.8 dBi, UHF Rubber Duck Antenna, 448-481 MHz,
SMA Female Connector, Vertical Polarization

LCANRBD1000



VSWR plot:



Mechanical Specifications

Size

Length	3.14961 in [80 mm]
Width	0.5 in [12.7 mm]
Height	0.5 in [12.7 mm]
Weight	0.033 lbs [14.97 g]

Environmental Specifications

Temperature

Operating Range	-40 to +60 deg C
-----------------	------------------

1.8 dBi, UHF Rubber Duck Antenna, 448-481 MHz,
SMA Female Connector, Vertical Polarization

LCANRBD1000



Compliance Certifications (see [product page](#) for current document)

Plotted and Other Data

Notes:

Typical Radiation Pattern

Appendix

Electrical Downtilt: Angle in the antenna's elevation pattern in which the maximum gain occurs.

Gain: Antenna's average gain.

Front to Back Ratio @ 180°±30°: Average difference between the antenna's maximum gain and the maximum gain in the antenna's back lobe over ±30° angles.

Cross-polarization Ratio (dB): Typical difference between the co-polarization and cross-polarization gain across the sector's 3 dB Beam Width.

Dedicated to serving the needs of the Wireless Internet Service Provider (WISP) market, KP Performance Antennas offers purpose built products that reliably perform in the field. KP Performance Antennas product line consists of Yagi, Grid, Omni, Dish and other style antennas that operate in the 900 MHz, 2.4 GHz, 3 GHz, and 5 GHz frequencies.

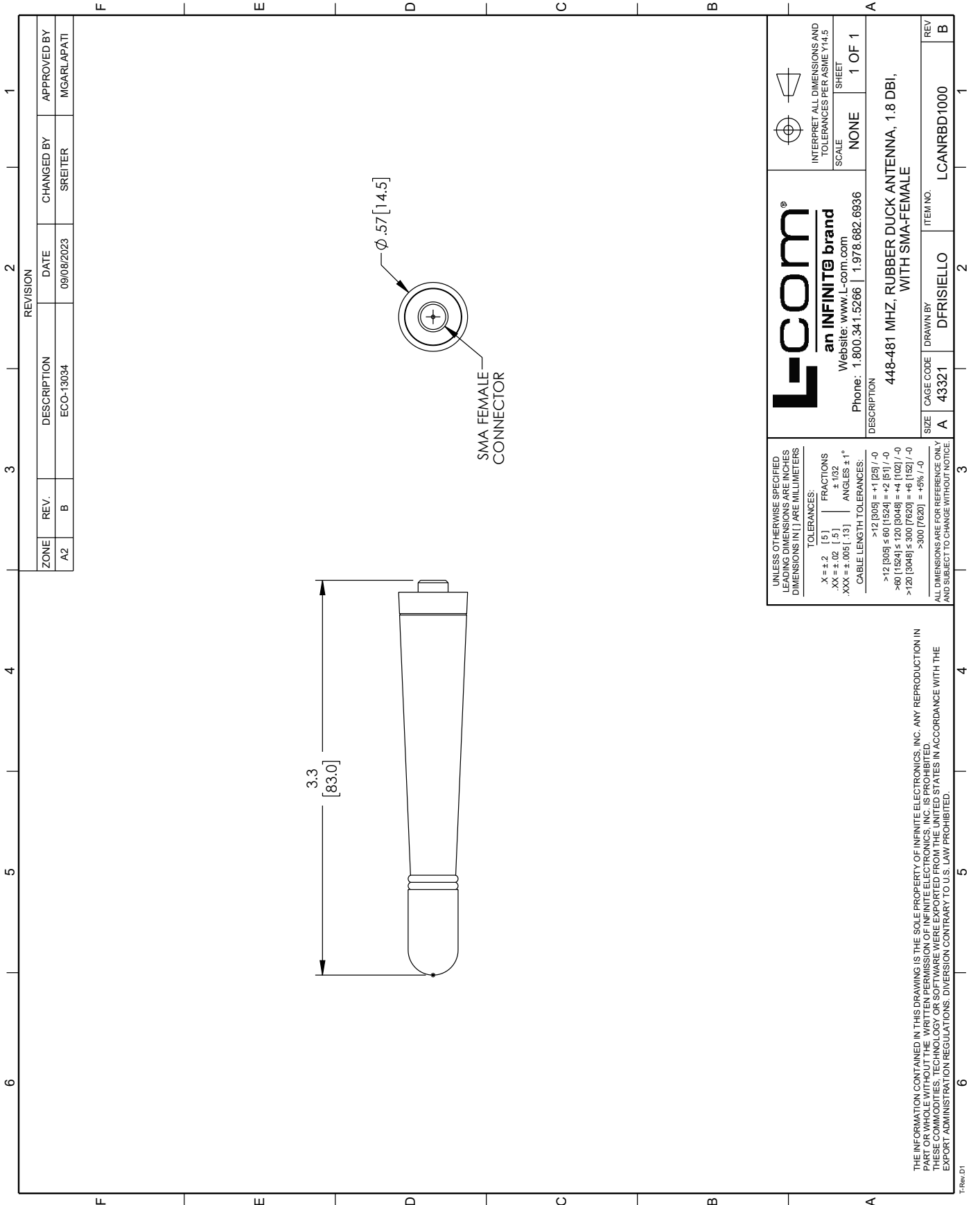
1.8 dBi, UHF Rubber Duck Antenna, 448-481 MHz, SMA Female Connector, Vertical Polarization from L-com has same day shipment for domestic and International orders. Our portfolio includes coaxial cable assemblies, connectors, adapters and custom products as well as lightning and surge protectors, NEMA rated enclosures, and an RF product line which includes antennas, amplifiers, passive, and active components.

URL: <https://www.l-com.com/1.8-dbi-uhf-rubber-duck-antenna-448-481-mhz-sma-female-connector-vertical-polarization-lcanrbd1000-p.aspx>

The information contained within this document is accurate to the best of our knowledge and representative of the part described herein. It may be necessary to make modifications to the part and/or the documentation of the part in order to implement improvements. L-com reserves the right to make such changes as required. Unless otherwise stated, all specifications are nominal. L-com does not make any representation or warranty regarding the suitability of the part described herein for any particular purpose, and L-com does not assume liability arising out of the use of any part or document.

LCANRBD1000 CAD Drawing

1.8 dBi, UHF Rubber Duck Antenna, 448-481 MHz, SMA Female Connector, Vertical Polarization



REVISION			
ZONE	REV.	DESCRIPTION	DATE
A2	B	ECC-13034	09/08/2023
			CHANGED BY
			SREITER
			APPROVED BY
			MGARLAPATI

<p>UNLESS OTHERWISE SPECIFIED ALL DIMENSIONS ARE IN INCHES DIMENSIONS IN [] ARE MILLIMETERS</p> <p>TOLERANCES:</p> <p>X = ±.2 [5] FRACTIONS ± 1/32 .XX = ±.02 [.5] ± 1/32 .XXX = ±.005 [.13] ANGLES ± 1°</p> <p>CABLE LENGTH TOLERANCES:</p> <p>>12 [305] = +1 [25] / -0 >60 [1524] = 0 [1524] = +2 [51] / -0 >120 [3048] = 0 [3048] = +4 [102] / -0 >300 [7620] = +8 [152] / -0</p> <p>ALL DIMENSIONS ARE FOR REFERENCE ONLY AND SUBJECT TO CHANGE WITHOUT NOTICE</p>	<p>L-com[®] an INFINITE brand Website: www.L-com.com Phone: 1.800.341.5266 1.978.682.6936</p>	<p>INTERPRET ALL DIMENSIONS AND TOLERANCES PER ASME Y14.5</p> <p>SCALE NONE</p> <p>SHEET 1 OF 1</p>
		<p>DESCRIPTION 448-481 MHZ. RUBBER DUCK ANTENNA, 1.8 DBI, WITH SMA-FEMALE</p>
<p>SIZE A</p>	<p>CAGE CODE A 43321</p>	<p>ITEM NO. LCANRBD1000</p>

THE INFORMATION CONTAINED IN THIS DRAWING IS THE SOLE PROPERTY OF INFINITE ELECTRONICS, INC. ANY REPRODUCTION IN PART OR WHOLE WITHOUT THE WRITTEN PERMISSION OF INFINITE ELECTRONICS, INC. IS PROHIBITED. THESE COMMODITIES, TECHNOLOGY OR SOFTWARE WERE EXPORTED FROM THE UNITED STATES IN ACCORDANCE WITH THE EXPORT ADMINISTRATION REGULATIONS. DIVERSION CONTRARY TO U.S. LAW PROHIBITED.

TRev.01