

868 MHz Rubber Duck Antenna, 3.5 dBi gain, SMA Male Connector, Vertical Polarization



## LCANRBD1017

### Features

- 868 MHz, 3.4 dBi Gain
- SMA-Male connector
- Heliflex whip antenna
- Plug and play
- 50W power handling
- VSWR < 1.5:1
- Vertical polarization
- Black

### Applications

- PtP or PtMP applications
- Trunking for two-way radio comms
- UHF applications
- Public Safety / Emergency services
- Tetra and P-25 applications exclusively supported
- Land and Private mobile radio (LMR) (PMR)
- Fixed and mobile services

### Description

The L-com LCANRBD1017 is a single band rubber duck antenna that ships on the same day as ordered. Our vertical polarized antenna with 868 MHz frequency band has a SMA male connector. This antenna with a black radome made of TPE has an overall length of 6.68 in, a width of 0.500 in, and a weight of 0.022 lbs.

L-com's LCANRBD1017 is a single band antenna with frequency band of 868 MHz and 3.5 dBi gain. The omni directional antenna has a maximum input VSWR of 1.5:1.

L-com has one of the largest in-stock collections of omni directional antennas with our wide selection of superior quality RF parts, that ship same day. Make your online purchase right now to take advantage of our same-day shipping. For further information on similar products, our expert technical support and knowledgeable sales team can help you get the ideal single band rubber duck antenna as per your requirement.

### Configuration

Design	Rubber Duck
Band Type	Single
Radiation Pattern	Omni Directional
Polarization	Vertical
Connector Type	SMA Male

### Electrical Specifications

Description	Minimum	Typical	Maximum	Units
Input VSWR			1.5:1	
Impedance		50		Ohms
Gain		3.5		dBi
Input Power			50	Watts

Click the following link (or enter part number in "SEARCH" on website) to obtain additional part information including price, inventory and certifications:  
[868 MHz Rubber Duck Antenna, 3.5 dBi gain, SMA Male Connector, Vertical Polarization LCANRBD1017](#)

868 MHz Rubber Duck Antenna, 3.5 dBi gain, SMA  
Male Connector, Vertical Polarization

## LCANRBD1017



### Mechanical Specifications

Radome Material	TPE
<b>Size</b>	
Length	6.68 in [169.67 mm]
Width	0.5 in [12.7 mm]
Height	0.5 in [12.7 mm]
Weight	0.022 lbs [9.98 g]

### Environmental Specifications

<b>Temperature</b>	
Operating Range	-40 to +80 deg C

**Compliance Certifications** (see [product page](#) for current document)

### Plotted and Other Data

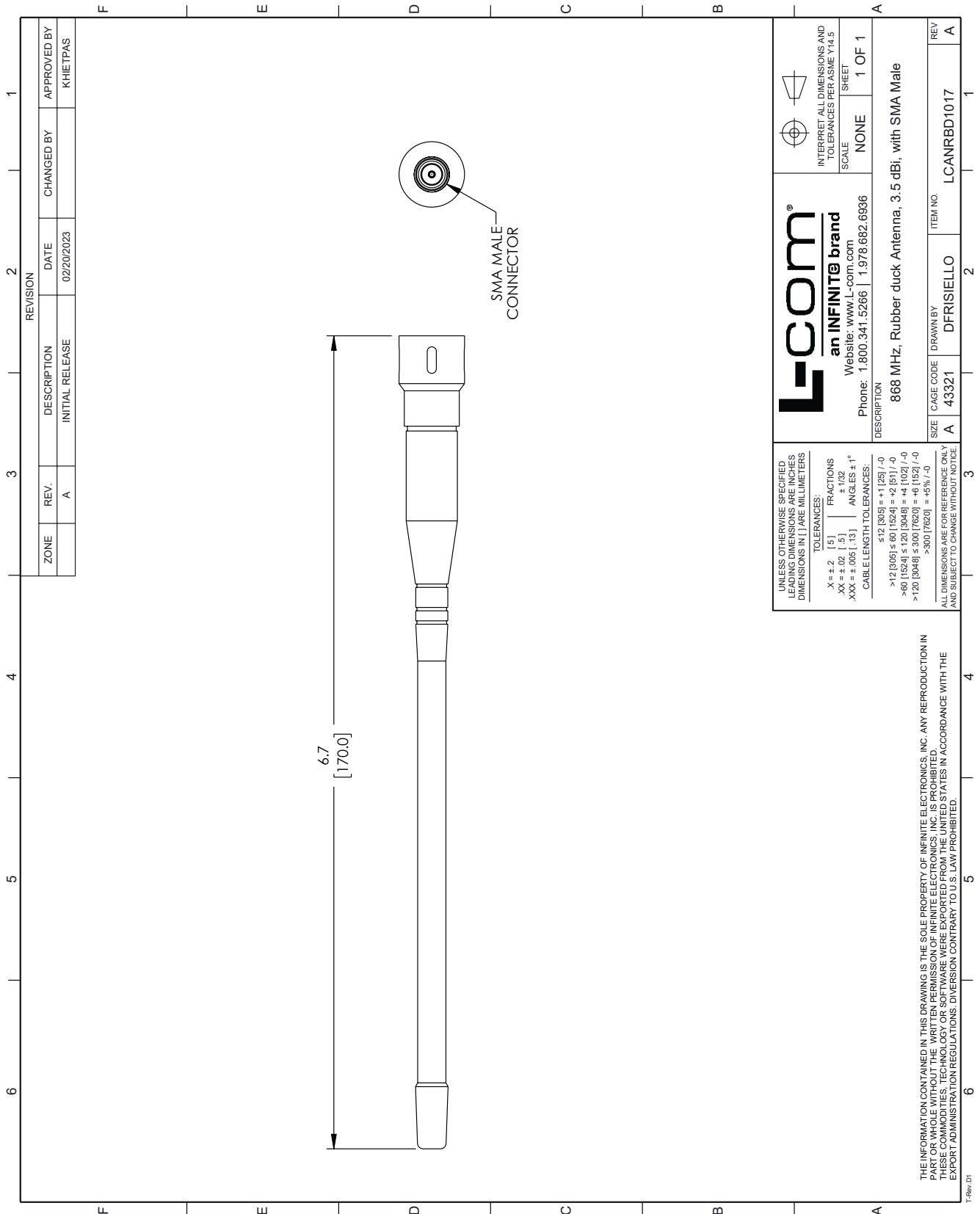
Notes:

868 MHz Rubber Duck Antenna, 3.5 dBi gain, SMA Male Connector, Vertical Polarization from L-com has same day shipment for domestic and International orders. Our portfolio includes coaxial cable assemblies, connectors, adapters and custom products as well as lightning and surge protectors, NEMA rated enclosures, and an RF product line which includes antennas, amplifiers, passive, and active components.

The information contained within this document is accurate to the best of our knowledge and representative of the part described herein. It may be necessary to make modifications to the part and/or the documentation of the part in order to impliment improvements. L-com reserves the right to make such changes as required. Unless otherwise stated, all specifications are nominal. L-com does not make any representation or warranty regarding the suitability of the part described herein for any particular purpose, and L-com does not assume liability arising out of the use of any part or document.

868 MHz Rubber Duck Antenna, 3.5 dBi gain, SMA Male Connector, Vertical Polarization

L-com CAD Drawing



REVISION			
ZONE	REV.	DESCRIPTION	DATE
	A	INITIAL RELEASE	02/20/2023
		CHANGED BY	APPROVED BY
			KHIE/PAS

**L-com**  
an INFINITE brand  
Website: [www.L-com.com](http://www.L-com.com)  
Phone: 1.800.341.5266 | 1.978.682.6936

INTERPRET ALL DIMENSIONS AND TOLERANCES PER ASME Y14.5  
SCALE NONE 1 OF 1 SHEET

DESCRIPTION: 868 MHz, Rubber duck Antenna, 3.5 dBi, with SMA Male

SIZE	CAGE CODE	DRAWN BY	ITEM NO.
A	43321	DFRISIELLO	LCANRBD1017

REV A

UNLESS OTHERWISE SPECIFIED, LEADING DIMENSIONS ARE INCHES, DIMENSIONS IN [ ] ARE MILLIMETERS.

TOLERANCES:  
X = ±.2 [ .5 ] FRACTIONS  
XX = ±.02 [ .5 ] ANGLES ± 1°  
XXX = ±.005 [ .13 ] ANGLES ± 1°

CABLE LENGTH TOLERANCES:  
≤ 12 [305] = ±1 [25] / -0  
> 12 [305] ≤ 60 [1524] = ±2 [51] / -0  
> 60 [1524] ≤ 120 [3048] = ±4 [102] / -0  
> 120 [3048] ≤ 300 [7620] = ±6 [152] / -0  
> 300 [7620] = ±5% / -0

ALL DIMENSIONS ARE FOR REFERENCE ONLY AND SUBJECT TO CHANGE WITHOUT NOTICE.

THE INFORMATION CONTAINED IN THIS DRAWING IS THE SOLE PROPERTY OF INFINITE ELECTRONICS, INC. ANY REPRODUCTION IN PART OR WHOLE WITHOUT THE WRITTEN PERMISSION OF INFINITE ELECTRONICS, INC. IS PROHIBITED. THESE COMMODITIES, TECHNOLOGY OR SOFTWARE WERE EXPORTED FROM THE UNITED STATES IN ACCORDANCE WITH THE EXPORT ADMINISTRATION REGULATIONS. DIVERSION CONTRARY TO U.S. LAW PROHIBITED.

T-Rev: 01