

5 dB Fixed Attenuator SMA Male (Plug) to SMA Female (Jack)
DC to 12 GHz Rated to 2 Watts, Brass Body, 1.35:1 VSWR



LCAT7467-5

RF Fixed Attenuators Technical Data Sheet

Features

- DC to 12 GHz Frequency Range
- SMA Connectorized Design
- Attenuation 5 dB \pm 1 dB
- Max Power 2 Watts (CW)
- Max VSWR of 1.35:1

Applications

- Instrumentation
- Precision Measurements
- Prototyping and Characterization
- Production Systems
- WIFI 6E
- 5G Cellular bands

Description

L-com carries a wide range of fixed attenuators with a broad selection of attenuation levels, frequency ranges, and power dissipation ranges. RF microwave attenuators (also known as RF pads) lower the amplitude of a signal (attenuate) a known amount and can be used in a wide variety of applications. These attenuator pads are used when a signal needs to be reduced to protect measurement equipment or other circuitry, to extend the range of power meters and amplifiers, and to impedance match circuits by reducing the VSWR seen by adjacent components. RF attenuators can prevent signal overload in amplifiers, receivers and detectors, adjusting the signal level to a range that is optimal.

Few RF components are as commonly used as fixed coaxial attenuators, and L-com carries one of the largest in-stock varieties and ships them same day. The 5 dB Fixed Attenuator LCAT7467-5 is rated to and operates from DC to 12 GHz. The versatile coaxial package uses SMA female to SMA male connectors.

Electrical Specifications

Description	Minimum	Typical	Maximum	Units
Frequency Range	DC		12	GHz
Impedance		50		Ohms
Nominal Attenuation		5		dB
VSWR			1.35:1	
Input Power, CW			2	Watts

Specifications by Frequency

Description	F1	F2	F3	F4	F5	Units
Range	DC to 2	2 to 5	5 to 10	10 to 12		GHz
VSWR, Max	1.15:1	1.25:1	1.35:1	1.35:1		
Attenuation Accuracy, Typ0.2		0.3	0.5	1		dB

Mechanical Specifications

Size

Length	0.969 in [24.61 mm]
Width/Diameter	0.315 in [8 mm]
Height	0.315 in [8 mm]
Weight	0.015 lbs [6.8 g]
Body Material and Plating	Brass, Gold

Click the following link (or enter part number in "SEARCH" on website) to obtain additional part information including price, inventory and certifications:
[5 dB Fixed Attenuator SMA Male \(Plug\) to SMA Female \(Jack\) DC to 12 GHz Rated to 2 Watts, Brass Body, 1.35:1 VSWR LCAT7467-5](#)

5 dB Fixed Attenuator SMA Male (Plug) to SMA Female (Jack) DC
to 12 GHz Rated to 2 Watts, Brass Body, 1.35:1 VSWR



LCAT7467-5

Configuration

Design	Fixed, Bi-Directional
Package Style	Conectorized

Connectors

Description	Connector 1	Connector 2
Type	SMA Female	SMA Male
Contact Material and Plating	Beryllium Copper, Gold	Beryllium Copper, Gold
Dielectric Type	Teflon	Teflon
Body Material and Plating	Brass, Gold	Brass, Gold

Environmental Specifications

Compliance Certifications

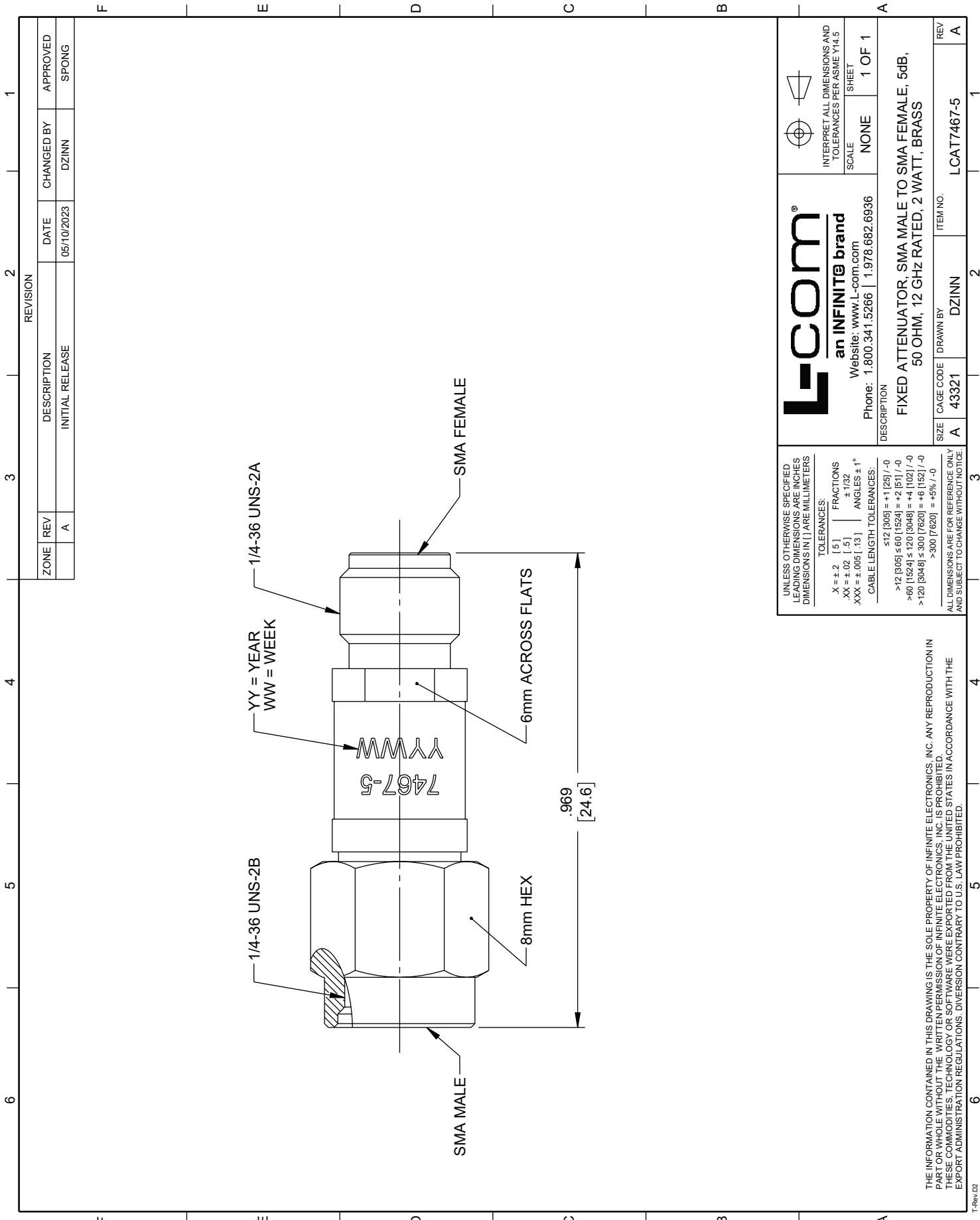
Plotted and Other Data

Our portfolio includes coaxial cable assemblies, connectors, adapters and custom products as well as lightning and surge protectors, NEMA rated enclosures, and an RF product line which includes antennas, amplifiers, passive, and active components.

The information contained in this document is accurate to the best of our knowledge and representative of the part described herein. It may be necessary to make modifications to the part and/or the documentation of the part, in order to implement improvements. L-com reserves the right to make such changes as required. Unless otherwise stated, all specifications are nominal. L-com does not make any representation or warranty regarding the suitability of the part described herein for any particular purpose, and L-com does not assume any liability arising out of the use of any part or documentation.

LCAT7467-5 CAD Drawing

5 dB Fixed Attenuator SMA Male (Plug) to SMA Female (Jack) DC to 12 GHz Rated to 2 Watts, Brass Body, 1.35:1 VSWR



ZONE	REV	DESCRIPTION	DATE	CHANGED BY	APPROVED
	A	INITIAL RELEASE	05/10/2023	DZINN	SPONG

 an INFINITE brand Website: www.L-com.com Phone: 1.800.341.5266 1.978.682.6936		INTERPRET ALL DIMENSIONS AND TOLERANCES PER ASME Y14.5 SCALE NONE SHEET 1 OF 1
DESCRIPTION FIXED ATTENUATOR, SMA MALE TO SMA FEMALE, 5dB, 50 OHM, 12 GHz RATED, 2 WATT, BRASS		
SIZE	CAGE CODE	ITEM NO.
A	43321	LCAT7467-5
REV	DRAWN BY	
A	DZINN	

UNLESS OTHERWISE SPECIFIED LEADING DIMENSIONS ARE INCHES DIMENSIONS IN [] ARE MILLIMETERS

TOLERANCES:

.X = ±.2	[.5]	FRACTIONS
.XX = ±.02	[.5]	± 1/32
.XXX = ±.005	[.13]	ANGLES ± 1°

CABLE LENGTH TOLERANCES:

<12 [305]	= +1 [25] / -0
>12 [305] ≤ 60 [1524]	= +2 [51] / -0
>60 [1524] ≤ 120 [3048]	= +4 [102] / -0
>120 [3048] ≤ 300 [7620]	= +6 [52] / -0
>300 [7620]	= +5% / -0

ALL DIMENSIONS ARE FOR REFERENCE ONLY AND SUBJECT TO CHANGE WITHOUT NOTICE.

THE INFORMATION CONTAINED IN THIS DRAWING IS THE SOLE PROPERTY OF INFINITE ELECTRONICS, INC. ANY REPRODUCTION IN PART OR WHOLE WITHOUT THE WRITTEN PERMISSION OF INFINITE ELECTRONICS, INC. IS PROHIBITED.

THESE COMMODITIES, TECHNOLOGY OR SOFTWARE WERE EXPORTED FROM THE UNITED STATES IN ACCORDANCE WITH THE EXPORT ADMINISTRATION REGULATIONS, DIVISION CONTRARY TO U.S. LAW PROHIBITED.