

9 dB Fixed Attenuator N Male (Plug) to N Female (Jack) DC to 12 GHz Rated to 2 Watts, Brass Body, 1.35:1 VSWR



**LCAT7468-9**

**Features**

- DC to 12 GHz Frequency Range
- N Connectorized Design
- Attenuation 9 dB  $\pm$ 1 dB
- Max Power 2 Watts (CW)
- Max VSWR of 1.35:1

**Applications**

- Instrumentation
- Precision Measurements
- Prototyping and Characterization
- Production Systems
- WIFI 6E
- 5G Cellular bands

**Description**

L-com carries a wide range of fixed attenuators with a broad selection of attenuation levels, frequency ranges, and power dissipation ranges. RF microwave attenuators (also known as RF pads) lower the amplitude of a signal (attenuate) a known amount and can be used in a wide variety of applications. These attenuator pads are used when a signal needs to be reduced to protect measurement equipment or other circuitry, to extend the range of power meters and amplifiers, and to impedance match circuits by reducing the VSWR seen by adjacent components. RF attenuators can prevent signal overload in amplifiers, receivers and detectors, adjusting the signal level to a range that is optimal.

Few RF components are as commonly used as fixed coaxial attenuators, and L-com carries one of the largest in-stock varieties and ships them same day. The 9 dB Fixed Attenuator LCAT7468-9 is rated to and operates from DC to 12 GHz. The versatile coaxial package uses N female to N male connectors.

**Electrical Specifications**

Description	Minimum	Typical	Maximum	Units
Frequency Range	DC		12	GHz
Impedance		50		Ohms
Nominal Attenuation		9		dB
VSWR			1.35:1	
Input Power, CW			2	Watts

**Specifications by Frequency**

Description	F1	F2	F3	F4	F5	Units
Frequency Range	DC to 2	2 to 5	5 to 10	10 to 12		GHz
VSWR, Max	1.15:1	1.25:1	1.35:1	1.35:1		
Attenuation Accuracy, Typ	0.2	0.3	0.5	1		dB

**Mechanical Specifications**

**Size**

- Length 2.1 in [53.34 mm]
- Width/Diameter 0.827 in [21.01 mm]
- Height 0.827 in [21.01 mm]
- Weight 0.06 lbs [27.22 g]
- Body Material and Plating Brass, Tri-Metal

9 dB Fixed Attenuator N Male (Plug) to N Female (Jack) DC to 12 GHz Rated to 2 Watts, Brass Body, 1.35:1 VSWR



## LCAT7468-9

### Configuration

Design Fixed, Bi-Directional  
Package Style Connectorized

### Connectors

Description	Connector 1	Connector 2
Type	N Female	N Male
Contact Material and Plating	Beryllium Copper, Gold	Beryllium Copper, Gold
Dielectric Type	Teflon	Teflon
Body Material and Plating	Brass, Tri-Metal	Brass, Tri-Metal

### Environmental Specifications

Temperature

**Compliance Certifications** (see [product page](#) for current document)

### Plotted and Other Data

Notes:

### Typical Performance Data

9 dB Fixed Attenuator N Male (Plug) to N Female (Jack) DC to 12 GHz Rated to 2 Watts, Brass Body, 1.35:1 VSWR from L-com has same day shipment for domestic and International orders. Our portfolio includes coaxial cable assemblies, connectors, adapters and custom products as well as lightning and surge protectors, NEMA rated enclosures, and an RF product line which includes antennas, amplifiers, passive, and active components.

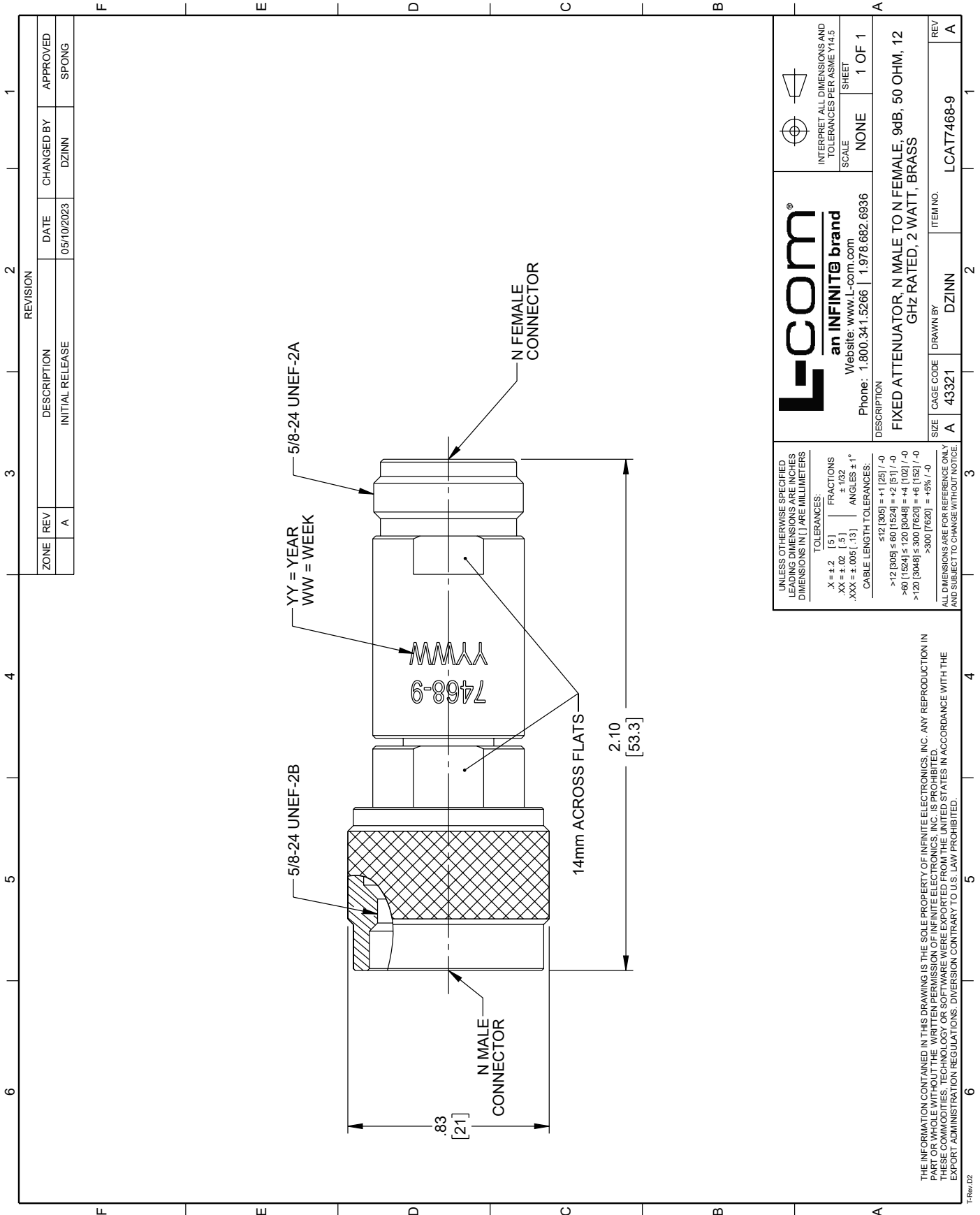
URL: <https://www.l-com.com/9-db-fixed-attenuator-n-male-plug-n-female-jack-dc-12-ghz-rated-2-watts-brass-body-1.35-1-vswr-lcat7468-9-p.aspx>

The information contained within this document is accurate to the best of our knowledge and representative of the part described herein. It may be necessary to make modifications to the part and/or the documentation of the part in order to implement improvements. L-com reserves the right to make such changes as required. Unless otherwise stated, all specifications are nominal. L-com does not make any representation or warranty regarding the suitability of the part described herein for any particular purpose, and L-com does not assume liability arising out of the use of any part or document.

# LCAT7468-9 CAD Drawing

9 dB Fixed Attenuator N Male (Plug) to N Female (Jack) DC to 12 GHz

Rated to 2 Watts, Brass Body, 1.35:1 VSWR



UNLESS OTHERWISE SPECIFIED DIMENSIONS ARE IN INCHES DIMENSIONS IN [ ] ARE IN MILLIMETERS		L-com® an INFINITE brand Website: www.L-com.com Phone: 1.800.341.5266   1.978.682.6936		INTERPRET ALL DIMENSIONS AND TOLERANCES PER ASME Y14.5 SCALE: NONE SHEET: 1 OF 1	
TOLERANCES: X ± .2 [5] FRACTIONS .XX ± .02 [5] ± 1/32 .XXX ± .005 [13] ANGLES ± 1° CABLE LENGTH TOLERANCES: ≤ 12 [305] = +1 [25] / -0 > 12 [305] ≤ 60 [1524] = +2 [51] / -0 > 60 [1524] ≤ 120 [3048] = +4 [102] / -0 > 120 [3048] ≤ 300 [7620] = +6 [152] / -0 > 300 [7620] = +8% / -0		DESCRIPTION FIXED ATTENUATOR, N MALE TO N FEMALE, 9dB, 50 OHM, 12 GHZ RATED, 2 WATT, BRASS		REV A	
ALL DIMENSIONS ARE FOR REFERENCE ONLY AND SUBJECT TO CHANGE WITHOUT NOTICE		ITEM NO. LCAT7468-9		REV A	
DRAWN BY DZINN		CAGE CODE A 43321		ITEM NO. LCAT7468-9	

THE INFORMATION CONTAINED IN THIS DRAWING IS THE SOLE PROPERTY OF INFINITE ELECTRONICS, INC. ANY REPRODUCTION IN PART OR WHOLE WITHOUT THE WRITTEN PERMISSION OF INFINITE ELECTRONICS, INC. IS PROHIBITED. THESE COMMODITIES, TECHNOLOGY OR SOFTWARE WERE EXPORTED FROM THE UNITED STATES IN ACCORDANCE WITH THE EXPORT ADMINISTRATION REGULATIONS. DIVERSION CONTRARY TO U.S. LAW PROHIBITED.

TrRev.02