

10W/10 dB RF Fixed Attenuator, 2.2-5 Male to
2.2-5 Female Brass Body DC to 6 GHz



LCAT7493-10

Features

- DC to 6 GHz Frequency Range
- 2.2-5 Connectorized Design
- Attenuation 10 dB \pm 1 dB
- Max Power 10 Watts (CW)
- Max VSWR of 1.25:1

Applications

- Instrumentation
- Precision Measurements
- Prototyping and Characterization
- Production Systems
- 5G Cellular bands

Description

L-com carries a wide range of fixed attenuators with a broad selection of attenuation levels, frequency ranges, and power dissipation ranges. RF microwave attenuators (also known as RF pads) lower the amplitude of a signal (attenuate) a known amount and can be used in a wide variety of applications. These attenuator pads are used when a signal needs to be reduced to protect measurement equipment or other circuitry, to extend the range of power meters and amplifiers, and to impedance match circuits by reducing the VSWR seen by adjacent components. RF attenuators can prevent signal overload in amplifiers, receivers and detectors, adjusting the signal level to a range that is optimal. Few RF components are as commonly used as fixed coaxial attenuators, and L-com carries one of the largest in-stock varieties and ships them same day. The 10 dB Fixed Attenuator LCAT7493-10 is rated to 10 Watts and operates from DC to 6 GHz.

Electrical Specifications

Description	Minimum	Typical	Maximum	Units
Frequency Range	DC		6	GHz
Impedance		50		Ohms
Nominal Attenuation		10		dB
Attenuation Accuracy			\pm 1	dB
VSWR			1.25:1	
Input Power, CW			10	Watts
Input Power, Peak			100	Watts
8% Duty Cycle, 20us PW				

Mechanical Specifications

Size

- Length 2.36 in [59.94 mm]
- Width/Diameter 0.79 in [20.07 mm]
- Height 0.79 in [20.07 mm]
- Weight 0.066 lbs [29.94 g]
- Body Material and Plating Brass, Copper-Tin-Zinc Alloy

Configuration

- Design Fixed, Bidirectional
- Design Type Standard
- Package Style Connectorized

10W/10 dB RF Fixed Attenuator, 2.2-5 Male to
2.2-5 Female Brass Body DC to 6 GHz



LCAT7493-10

Connectors

Description	Connector 1	Connector 2
Type	2.2-5 Male	2.2-5 Female
Contact Material and Plating	Beryllium Copper, Silver	Beryllium Copper, Silver
Dielectric Type	PTFE	PTFE
Body Material and Plating	Brass, Tri-Metal	Brass, Tri-Metal

Environmental Specifications

Temperature

Operating Range	-40 to +75 deg C
Storage Range	-50 to +85 deg C
Humidity	<95%
Shock	IEC 60068-2-27
Vibration	IEC 60068-2-6-Fc
Altitude	<5000m
Thermal Shock	IEC 60068 -2-14-Na

Compliance Certifications (see [product page](#) for current document)

Plotted and Other Data

Notes:

Typical Performance Data

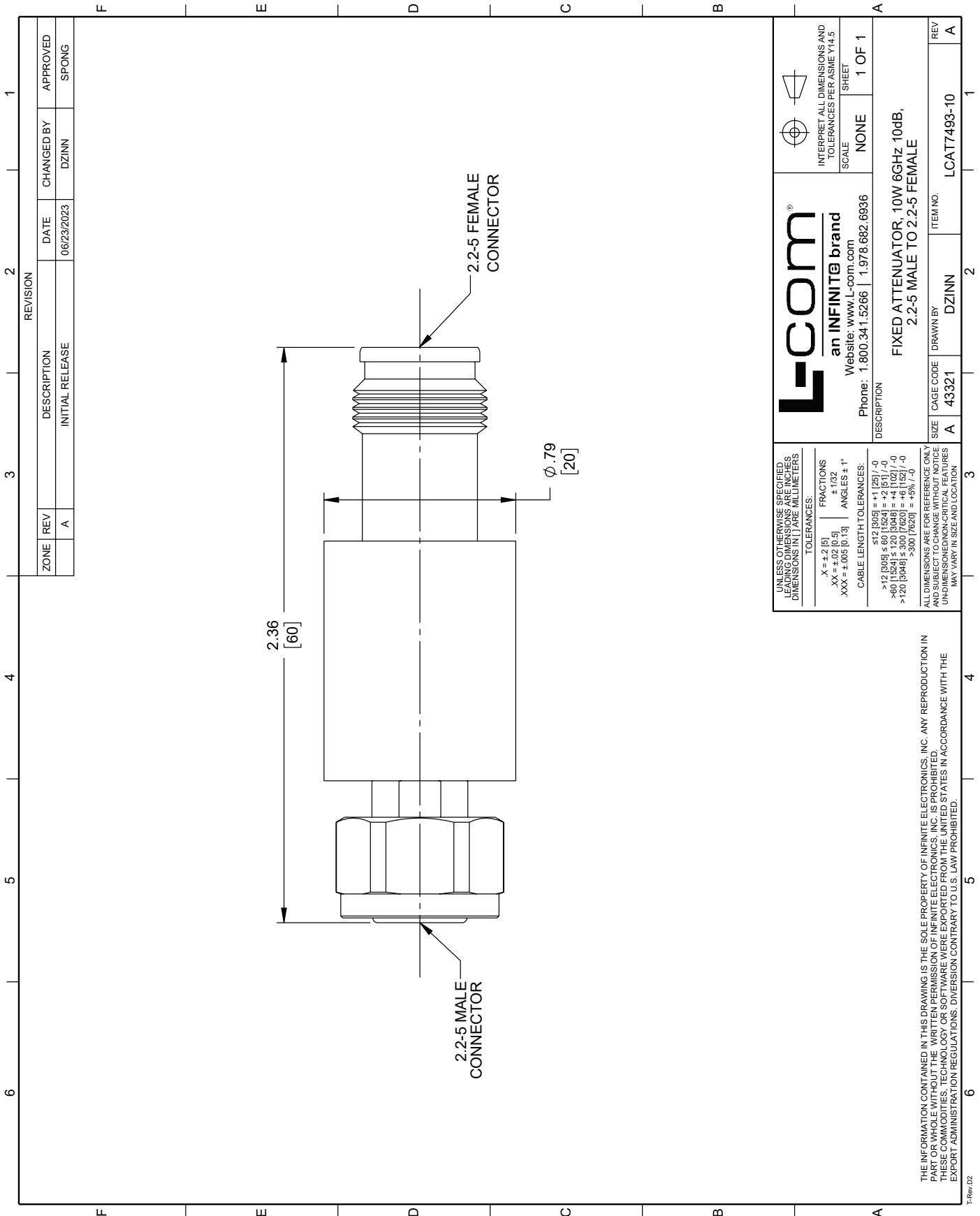
10W/10 dB RF Fixed Attenuator, 2.2-5 Male to 2.2-5 Female Brass Body DC to 6 GHz from L-com has same day shipment for domestic and International orders. Our portfolio includes coaxial cable assemblies, connectors, adapters and custom products as well as lightning and surge protectors, NEMA rated enclosures, and an RF product line which includes antennas, amplifiers, passive, and active components.

URL: <https://www.l-com.com/6ghz-10db-10w-fixed-attenuator-2.2-5-male-2.2-5-female-lcat7493-10-p.aspx>

The information contained within this document is accurate to the best of our knowledge and representative of the part described herein. It may be necessary to make modifications to the part and/or the documentation of the part in order to implement improvements. L-com reserves the right to make such changes as required. Unless otherwise stated, all specifications are nominal. L-com does not make any representation or warranty regarding the suitability of the part described herein for any particular purpose, and L-com does not assume liability arising out of the use of any part or document.

LCAT7493-10 CAD Drawing

10W/10 dB RF Fixed Attenuator, 2.2-5 Male to 2.2-5 Female Brass Body DC to 6 GHz



ZONE	REV	DESCRIPTION	DATE	CHANGED BY	APPROVED
	A	INITIAL RELEASE	06/23/2023	DZINN	SPONG

<p>L-com an INFINITE brand</p> <p>Website: www.L-com.com</p> <p>Phone: 1.800.341.5266 1.978.682.6936</p>	<p>INTERPRET ALL DIMENSIONS AND TOLERANCES PER ASME Y14.5</p> <p>SCALE: NONE</p> <p>SHEET: 1 OF 1</p>
	<p>DESCRIPTION: FIXED ATTENUATOR, 10W 6GHz 10dB, 2.2-5 MALE TO 2.2-5 FEMALE</p> <p>ITEM NO: LCAT7493-10</p>
<p>UNLESS OTHERWISE SPECIFIED LEADING DIMENSIONS ARE INCHES DIMENSIONS IN [] ARE MILLIMETERS</p> <p>TOLERANCES:</p> <p>X = +.2 (5) FRACTIONS ± 1/32</p> <p>XX = +.02 (0.5) ANGLES ± 1°</p> <p>XXX = ±.005 (0.13)</p> <p>CABLE LENGTH TOLERANCES:</p> <p>>12 [305] ≤ 60 [1524] = +.2 (5) / -0</p> <p>>60 [1524] ≤ 300 [7620] = +.4 (10) / -0</p> <p>>300 [7620] = +.5 (12.5) / -0</p>	<p>ALL DIMENSIONS ARE FOR REFERENCE ONLY. DIMENSIONS TO BE USED FOR MANUFACTURE AND SUBJECT TO CHANGE WITHOUT NOTICE AND WITHOUT CHANGE IN PRICE. UNDIMENSIONED NON-CRITICAL FEATURES MAY VARY IN SIZE AND LOCATION.</p>

THE INFORMATION CONTAINED IN THIS DRAWING IS THE SOLE PROPERTY OF INFINITE ELECTRONICS, INC. ANY REPRODUCTION IN PART OR WHOLE WITHOUT THE WRITTEN PERMISSION OF INFINITE ELECTRONICS, INC. IS PROHIBITED. THESE COMMODITIES, TECHNOLOGY OR SOFTWARE WERE EXPORTED FROM THE UNITED STATES IN ACCORDANCE WITH THE EXPORT ADMINISTRATION REGULATIONS. DIVERSION CONTRARY TO U.S. LAW PROHIBITED.

TRev.02