

N Male to N Female Bulkhead Cable Assembly using LC085TB Coax, 2 FT



**LCCA30121-FT2**

**Configuration**

- Connector 1: N Male
- Connector 2: N Female Bulkhead
- Cable Type: LC085TB

**Features**

- Max Frequency 11 GHz
- Shielding Effectivity > 100dB
- PTFE Dielectric with 69.5% VoP
- Hand Formable
- Tin Filled Copper Composite Braid Outer Conductor

**Applications**

- General Purpose
- Laboratory Use
- System Interconnect



**Description**

L-com's LCCA30121-FT2 is a N male to N female bulkhead cable assembly using LC085TB coax, 2 FT and ships same-day. The LC085TB coax of this N cable uses the PTFE dielectric with a VoP of 69.5%. These formable RF cable assemblies are a great alternative to expensive semi-rigid assemblies because they can be hand formed to fit specific designs. Our L-com N to N cable assembly has a male to female gender configuration with formable LC085TB series coax and operates to 11 GHz. The tinned copper composite braid outer conductor is easily formed by hand with an overall diameter of 0.085 inches and excellent shielding effectiveness greater than 100dB. L-com's RF cable assembly with N bulkhead interface enables system designers to have external connections on their product enclosures or to be used for other rack mount and panel mount applications.

Custom versions of this N male to N female cable, along with the rest of L-com's other RF assemblies, can also be built and shipped same day. Other available RF cable assembly value added services from L-com include connector orientation or clocking, heat shrink booting and custom labeling. RF testing can also be performed to document the electrical performance of your cable assembly. Contact a sales representative for testing or custom RF cable quotes. Part number LCCA30121-FT2 L-com N Male to N Female Bulkhead Cable Assembly using LC085TB Coax, 2 FT data sheet PDF includes details of the RF product specifications, CAD drawing(s) and dimensions below.

N Male to N Female Bulkhead Cable Assembly using LC085TB Coax, 2 FT



## LCCA30121-FT2

### Electrical Specifications

Description	Minimum	Typical	Maximum	Units
Frequency Range	DC		11	GHz
Velocity of Propagation		69.5		%
RF Shielding	100			dB
Capacitance		29.4 [96.46]		pF/ft [pF/m]
DC Resistance Inner Conductor		65.7 [215.55]		Ohms/1000ft [Ohms/Km]
DC Resistance Outer Conductor		10.2 [33.46]		Ohms/1000ft [Ohms/Km]

### Specifications by Frequency

Description	F1	F2	F3	F4	F5	Units
Frequency	0.5	1	2.5	5	11	GHz
Insertion Loss (Max.)	0.5	0.65	0.9	1.3	1.91	dB

#### Electrical Specification Notes:

The Insertion Loss data above is based on the performance specifications of the coax cable and connectors used in this assembly. The Insertion Loss is estimated as 0.1 dB per connector.

### Mechanical Specifications

#### Cable Assembly

Length	24 in [609.6 mm]
Diameter	0.013 in [0.33 mm]

#### Cable

Cable Type	LC085TB
Impedance	50 Ohms
Inner Conductor Type	Solid
Inner Conductor Material and Plating	Copper Clad Steel, Silver
Dielectric Type	PTFE
Number of Shields	0
Outer Conductor Material and Plating	Tinned Copper Composite Braid
Outer Conductor Diameter	0.085 in [2.16 mm]
Repeated Minimum Bend Radius	0.78 in [19.81 mm]

N Male to N Female Bulkhead Cable Assembly using LC085TB Coax, 2 FT



## LCCA30121-FT2

### Connectors

Description	Connector 1	Connector 2
Type	N Male	N Female Bulkhead
Impedance	50 Ohms	50 Ohms
Contact Material and Plating	Brass, Gold over Nickel	Phosphor Bronze, Gold over Nickel
Dielectric Type	PTFE	PTFE
Outer Conductor Material and Plating		Brass, Nickel
Body Material and Plating	Brass, Nickel	Brass, Nickel
Coupling Nut Material and Plating	Brass, Nickel	

### Environmental Specifications

#### Temperature

Operating Range -55 to +125 deg C

**Compliance Certifications** (see [product page](#) for current document)

### Plotted and Other Data

Notes:

- Values at 25°C, sea level.

N Male to N Female Bulkhead Cable Assembly using LC085TB Coax, 2 FT



## LCCA30121-FT2

### How to Order

Part Number Configuration:

**LCCA30121 - xx uu**



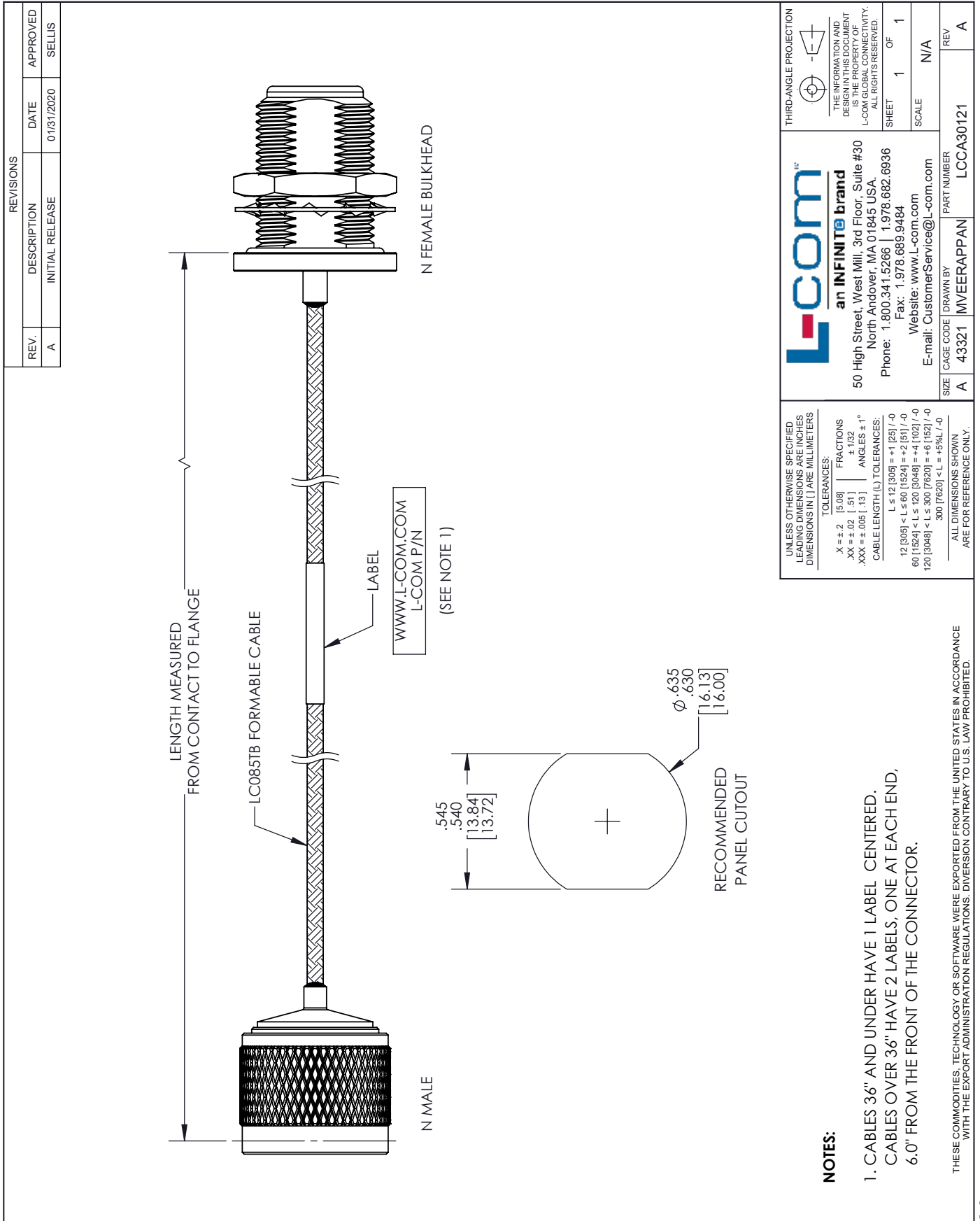
Example: LCCA30121-12 = 12 inches long cable  
LCCA30121-100cm = 100 cm long cable

N Male to N Female Bulkhead Cable Assembly using LC085TB Coax, 2 FT from L-com has same day shipment for domestic and International orders. L-com is a leading manufacturer of wired and wireless connectivity products and committed to in-stock availability and same day shipping. Our portfolio includes coaxial cable assemblies, connectors, adapters and custom products as well as lightning and surge protectors, NEMA rated enclosures, and an RF product line which includes antennas, amplifiers, passive, and active components.

The information contained within this document is accurate to the best of our knowledge and representative of the part described herein. It may be necessary to make modifications to the part and/or the documentation of the part in order to implement improvements. L-com reserves the right to make such changes as required. Unless otherwise stated, all specifications are nominal. L-com does not make any representation or warranty regarding the suitability of the part described herein for any particular purpose, and L-com does not assume liability arising out of the use of any part or document contained within this document is accurate to the best of our knowledge and representative of the part described herein. It may be necessary to make modifications to the part and/or the documentation of the part in order to implement improvements. L-com reserves the right to make such changes as required. Unless otherwise stated, all specifications are nominal. L-com does not make any representation or warranty regarding the suitability of the part described herein for any particular purpose, and L-com does not assume liability arising out of the use of any part or document.

# N Male to N Female Bulkhead Cable Assembly using LC085TB Coax, 2 FT

## L-com CAD Drawing



**L-com**  
an INFINITE brand

50 High Street, West Mill, 3rd Floor, Suite #30  
North Andover, MA 01845 USA.  
Phone: 1.800.341.5266 | 1.978.682.6936  
Fax: 1.978.689.9484  
Website: www.l-com.com  
E-mail: CustomerService@l-com.com

THIRD-ANGLE PROJECTION

THE INFORMATION AND DESIGN IN THIS DOCUMENT IS THE PROPERTY OF L-COM GLOBAL CONNECTIVITY. ALL RIGHTS RESERVED.

SHEET 1 OF 1  
SCALE N/A

SIZE	CAGE CODE	DRAWN BY	PART NUMBER	REV
A	43321	MVEERAPPAN	LCCA30121	A