

Low Loss 7/16 DIN Male to 7/16 DIN Male Cable Assembly using LMR-600-DB Coax, 1.5 FT with Times Microwave Components



LCCA30217-FT1.5

Configuration

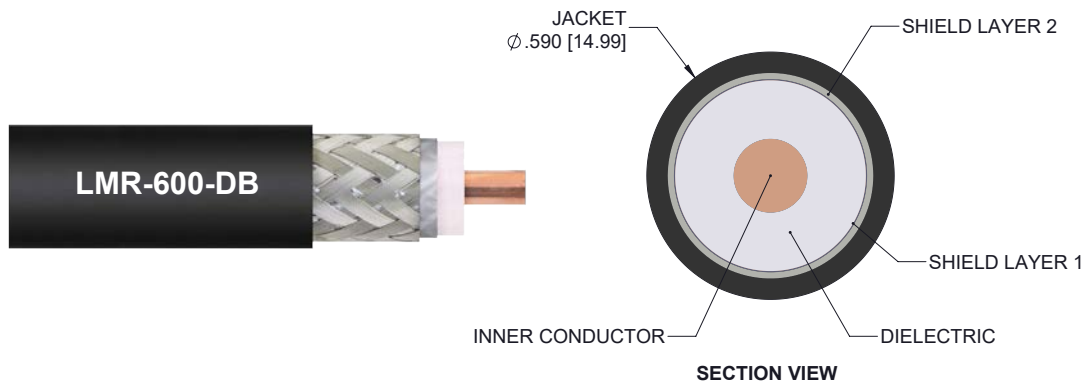
- Connector 1: 7/16 DIN Male
- Connector 2: 7/16 DIN Male
- Cable Type: LMR-600-DB

Features

- Using Times Microwave Components
- Max Frequency 5.8 GHz
- Shielding Effectivity > 90 dB
- 87% Phase Velocity
- PE Jacket
- Low Insertion Loss
- Bend Radius of 6 Inches

Applications

- General Purpose
- Laboratory Use
- Antenna Installations
- Land Mobile Radio & Other Communication Systems
- Cellular & Wi-Fi Systems



Description

L-com's LCCA30217-FT1.5 is a low loss 7/16 DIN male to 7/16 DIN male cable assembly using LMR-600-DB coax, 1.5 FT with Times Microwave components and ships same-day. The LMR-600-DB coax of this 7/16 DIN cable uses the PE (F) dielectric with a VoP of 87%, resulting in very low insertion loss compared to solid dielectrics. These flexible RF cable assemblies are ideal for applications where flexure is required. Our L-com 7/16 DIN to 7/16 DIN cable assembly has a male to male gender configuration with flexible LMR-600-DB series coax and operates to 5.8 GHz. The double shield of this 7/16 DIN cable is layered by tinned copper braid over aluminum tape providing shielding effectiveness greater than 90dB. *LMR[™] is a trademark of Times Microwave Systems.

Custom versions of this 7/16 DIN male to 7/16 DIN male cable, along with the rest of L-com's other RF assemblies, can also be built and shipped same day. Other available RF cable assembly value added services from L-com include connector orientation or clocking, heat shrink booting and custom labeling. RF testing can also be performed to document the electrical performance of your cable assembly. Contact a sales representative for testing or custom RF cable quotes. Part number LCCA30217-FT1.5 L-com Low Loss 7/16 DIN Male to 7/16 DIN Male Cable Assembly using LMR-600-DB Coax, 1.5 FT with Times Microwave Components data sheet PDF includes details of the RF product specifications, CAD drawing(s) and dimensions below.

Low Loss 7/16 DIN Male to 7/16 DIN Male Cable Assembly using LMR-600-DB Coax, 1.5 FT with Times Microwave Components



LCCA30217-FT1.5

Electrical Specifications

| Description | Minimum | Typical | Maximum | Units |
|-------------------------------|---------|--------------|---------|-----------------------|
| Frequency Range | DC | | 5.8 | GHz |
| VSWR | | | 1.33:1 | |
| Velocity of Propagation | | 87 | | % |
| RF Shielding | 90 | | | dB |
| Group Delay | | 1.17 [3.84] | | ns/ft [ns/m] |
| Capacitance | | 23.4 [76.77] | | pF/ft [pF/m] |
| Inductance | | 0.058 [0.19] | | uH/ft [uH/m] |
| DC Resistance Inner Conductor | | 0.53 [1.74] | | Ohms/1000ft [Ohms/Km] |
| DC Resistance Outer Conductor | | 1.2 [3.94] | | Ohms/1000ft [Ohms/Km] |
| Jacket Spark | | | 8,000 | Vrms |

Specifications by Frequency

| Description | F1 | F2 | F3 | F4 | F5 | Units |
|-----------------------|------|------|------|------|-----|-------|
| Frequency | 0.25 | 0.5 | 1 | 2.5 | 5.8 | GHz |
| Insertion Loss (Typ.) | 0.21 | 0.22 | 0.23 | 0.26 | 0.3 | dB |

Electrical Specification Notes:

The Insertion Loss data above is based on the performance specifications of the coax cable and connectors used in this assembly. The Insertion Loss includes an estimated insertion loss of 0.1 dB per connector.

Mechanical Specifications

Cable Assembly

| | |
|----------|--------------------|
| Length | 18 in [457.2 mm] |
| Diameter | 1.25 in [31.75 mm] |

Cable

| | |
|--------------------------------------|----------------------|
| Cable Type | LMR-600-DB |
| Impedance | 50 Ohms |
| Inner Conductor Type | Solid |
| Inner Conductor Material and Plating | Copper Clad Aluminum |
| Dielectric Type | PE (F) |
| Number of Shields | 2 |
| Shield Layer 1 | Aluminum Tape |
| Shield Layer 2 | Tinned Copper Braid |

Low Loss 7/16 DIN Male to 7/16 DIN Male Cable Assembly using LMR-600-DB Coax, 1.5 FT with Times Microwave Components



LCCA30217-FT1.5

| | |
|------------------------------|------------------------|
| Jacket Material | PE, Black |
| Jacket Diameter | 0.59 in [14.99 mm] |
| One Time Minimum Bend Radius | 1.5 in [38.1 mm] |
| Repeated Minimum Bend Radius | 6 in [152.4 mm] |
| Bending Moment | 2.75 lbs-ft [3.73 N-m] |
| Flat Plate Crush | 60 lbs/in [1.07 Kg/mm] |
| Tensile Strength | 350 lbs [158.76 Kg] |

Connectors

| Description | Connector 1 | Connector 2 |
|---------------------------------------|------------------------|------------------------|
| Type | 7/16 DIN Male | 7/16 DIN Male |
| Impedance | 50 Ohms | 50 Ohms |
| Contact Material and Plating | Copper, Silver | Copper, Silver |
| Contact Plating Specification | 196µ in. minimum | 196µ in. minimum |
| Dielectric Type | PTFE | PTFE |
| Outer Conductor Material and Plating | Brass, Tri-Metal | Brass, Tri-Metal |
| Outer Conductor Plating Specification | 78µin. minimum | 78µin. minimum |
| Body Material and Plating | Brass, Tri-Metal | Brass, Tri-Metal |
| Body Plating Specification | 78µ in. minimum | 78µ in. minimum |
| Coupling Nut Material and Plating | Brass, Nickel | Brass, Nickel |
| Coupling Nut Plating Specification | 196µ in. minimum | 196µ in. minimum |
| Hex Size | 1 1/4 in | 1 1/4 in |
| Torque | 18.417 ft-lbs 24.97 Nm | 18.417 ft-lbs 24.97 Nm |

Environmental Specifications

Temperature

| | |
|-----------------|------------------|
| Operating Range | -40 to +85 deg C |
| Storage Range | -70 to +85 deg C |

Compliance Certifications (see [product page](#) for current document)

Plotted and Other Data

Notes:

Low Loss 7/16 DIN Male to 7/16 DIN Male Cable Assembly using LMR-600-DB Coax, 1.5 FT with Times Microwave Components



LCCA30217-FT1.5

How to Order

Part Number Configuration:

LCCA30217 - xx uu



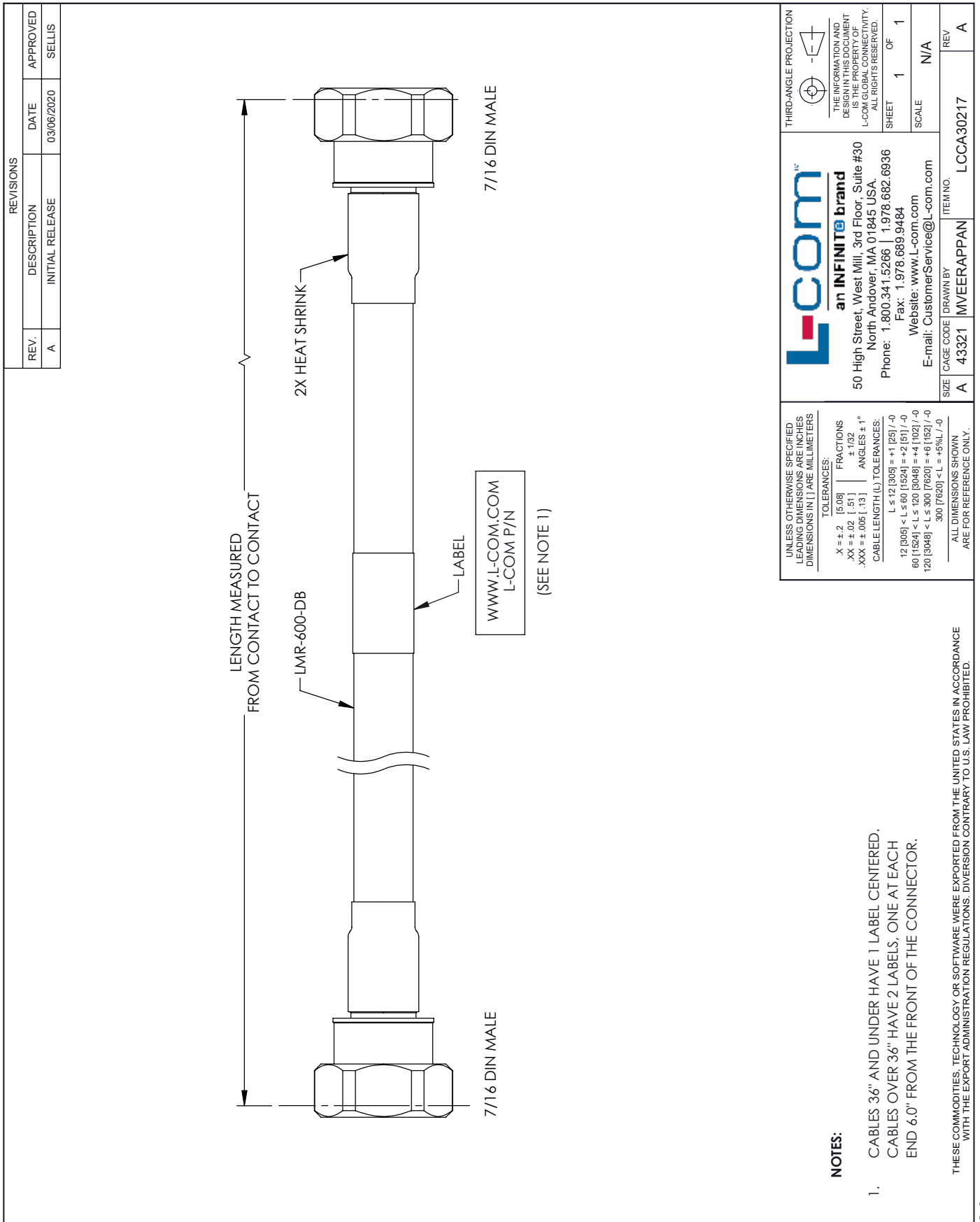
Example: LCCA30217-12 = 12 inches long cable
LCCA30217-100cm = 100 cm long cable

Low Loss 7/16 DIN Male to 7/16 DIN Male Cable Assembly using LMR-600-DB Coax, 1.5 FT with Times Microwave Components from L-com has same day shipment for domestic and International orders. L-com is a leading manufacturer of wired and wireless connectivity products and committed to in-stock availability and same day shipping. Our portfolio includes coaxial cable assemblies, connectors, adapters and custom products as well as lightning and surge protectors, NEMA rated enclosures, and an RF product line which includes antennas, amplifiers, passive, and active components.

The information contained within this document is accurate to the best of our knowledge and representative of the part described herein. It may be necessary to make modifications to the part and/or the documentation of the part in order to impliment improvements. L-com reserves the right to make such changes as required. Unless otherwise stated, all specifications are nominal. L-com does not make any representation or warranty regarding the suitability of the part described herein for any particular purpose, and L-com does not assume liability arising out of the use of any part or document.ontained within this document is accurate to the best of our knowledge and representative of the part described herein. It may be necessary to make modifications to the part and/or the documentation of the part in order to impliment improvements. L-com reserves the right to make such changes as required. Unless otherwise stated, all specifications are nominal. L-com does not make any representation or warranty regarding the suitability of the part described herein for any particular purpose, and L-com does not assume liability arising out of the use of any part or document.

Low Loss 7/16 DIN Male to 7/16 DIN Male Cable Assembly using LMR-600-DB Coax, 1.5 FT with Times Microwave Components

L-com CAD Drawing



| REVISIONS | | |
|-----------|-----------------|------------|
| REV. | DESCRIPTION | DATE |
| A | INITIAL RELEASE | 03/06/2020 |
| | | APPROVED |
| | | SELLIS |

THIRD-ANGLE PROJECTION

THE INFORMATION AND DESIGN IN THIS DOCUMENT IS THE PROPERTY OF L-COM GLOBAL CONNECTIVITY. ALL RIGHTS RESERVED.

SHEET 1 OF 1

SCALE N/A

REV A

L-com
an INFINITE brand

50 High Street, West Mill, 3rd Floor, Suite #30
North Andover, MA 01845 USA.
Phone: 1.800.341.5266 | 1.978.682.6936
Fax: 1.978.689.9484
Website: www.l-com.com
E-mail: CustomerService@l-com.com

SIZE A CAGE CODE A 43321 DRAWN BY MVEERAPPAN ITEM NO. LCCA30217

UNLESS OTHERWISE SPECIFIED LEADING DIMENSIONS ARE INCHES DIMENSIONS IN [] ARE MILLIMETERS

TOLERANCES:

| | | |
|-------------|--------|-------------|
| .X ± .2 | [5.08] | FRACTIONS |
| .XX ± .02 | [.51] | ± 1/32 |
| .XXX ± .005 | [.13] | ANGLES ± 1° |

CABLE LENGTH (L) TOLERANCES:

| | |
|-----------------------------|----------------|
| L ≤ 12 [305] | ± 1 [25] / -0 |
| 12 [305] < L ≤ 60 [1524] | ± 2 [61] / -0 |
| 60 [1524] < L ≤ 120 [3048] | ± 4 [102] / -0 |
| 120 [3048] < L ≤ 300 [7620] | ± 6 [152] / -0 |
| 300 [7620] < L | ± 9.5% / -0 |

ALL DIMENSIONS SHOWN ARE FOR REFERENCE ONLY.

- NOTES:**
- CABLES 36" AND UNDER HAVE 1 LABEL CENTERED. CABLES OVER 36" HAVE 2 LABELS, ONE AT EACH END 6.0" FROM THE FRONT OF THE CONNECTOR.
- THESE COMMODITIES, TECHNOLOGY OR SOFTWARE WERE EXPORTED FROM THE UNITED STATES IN ACCORDANCE WITH THE EXPORT ADMINISTRATION REGULATIONS. DIVERSION CONTRARY TO U.S. LAW PROHIBITED.