

SMA Male to Reverse Polarity SMA Male Cable  
Assembly using RG223 Coax, 6 FT



**LCCA30358-FT6**

**Configuration**

- Connector 1: SMA Male
- Connector 2: SMA Male Reverse Polarity
- Cable Type: RG223

**Features**

- 66% Phase Velocity
- Double Shielded
- PVC Jacket

**Applications**

- General Purpose
- Laboratory Use



**Description**

L-com's LCCA30358-FT6 is a SMA male to reverse polarity SMA male cable assembly using RG223 coax, 6 FT and ships same-day. The RG223 coax of this SMA cable uses the PE dielectric with a VoP of 66%. These flexible RF cable assemblies are ideal for applications where flexure is required. Our L-com SMA to SMA cable assembly has a male to male gender configuration with flexible RG223 series coax. The double shield of this SMA cable is layered by silver plated copper braid over silver plated copper braid.

Custom versions of this SMA male to SMA male cable, along with the rest of L-com's other RF assemblies, can also be built and shipped same day. Other available RF cable assembly value added services from L-com include connector orientation or clocking, heat shrink booting and custom labeling. RF testing can also be performed to document the electrical performance of your cable assembly. Contact a sales representative for testing or custom RF cable quotes. Part number LCCA30358-FT6 L-com SMA Male to Reverse Polarity SMA Male Cable Assembly using RG223 Coax, 6 FT data sheet PDF includes details of the RF product specifications, CAD drawing(s) and dimensions below.

SMA Male to Reverse Polarity SMA Male Cable  
Assembly using RG223 Coax, 6 FT



**LCCA30358-FT6**

**Electrical Specifications**

Description	Minimum	Typical	Maximum	Units
VSWR			1.5:1	
Velocity of Propagation		66		%
Capacitance		30.8 [101.05]		pF/ft [pF/m]
Operating Voltage (AC)			500	Vrms

**Mechanical Specifications**

**Cable Assembly**

Length	72 in [182.88 cm]
Diameter	0.315 in [8 mm]
Weight	0.066 lbs [29.94 g]

**Cable**

Cable Type	RG223
Impedance	50 Ohms
Inner Conductor Type	Solid
Inner Conductor Material and Plating	Copper, Silver
Dielectric Type	PE
Number of Shields	2
Shield Layer 1	Silver Plated Copper Braid
Shield Layer 2	Silver Plated Copper Braid
Jacket Material	PVC, Black
Jacket Diameter	0.21 in [5.33 mm]
One Time Minimum Bend Radius	0.984 in [24.99 mm]

SMA Male to Reverse Polarity SMA Male Cable  
Assembly using RG223 Coax, 6 FT



## LCCA30358-FT6

### Connectors

Description	Connector 1	Connector 2
Type	SMA Male	SMA Male Reverse Polarity
Specification	MIL-STD-348A	
Impedance	50 Ohms	50 Ohms
Contact Material and Plating	Brass, Gold	Gold
Contact Plating Specification	50 $\mu$ in. minimum	
Dielectric Type	Teflon	PTFE
Body Material and Plating	Brass, Nickel	Brass, Nickel
Body Plating Specification	100 $\mu$ in. minimum	
Coupling Nut Material and Plating		Brass, Nickel
Hex Size	5/16 in	5/16 in.
Torque	5 in-lbs 0.57 Nm	5 in-lbs 0.57 Nm

**Compliance Certifications** (see [product page](#) for current document)

### Plotted and Other Data

Notes:

SMA Male to Reverse Polarity SMA Male Cable  
Assembly using RG223 Coax, 6 FT

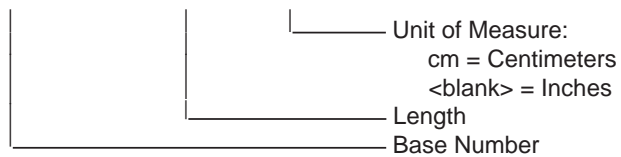


**LCCA30358-FT6**

**How to Order**

Part Number Configuration:

**LCCA30358 - xx uu**



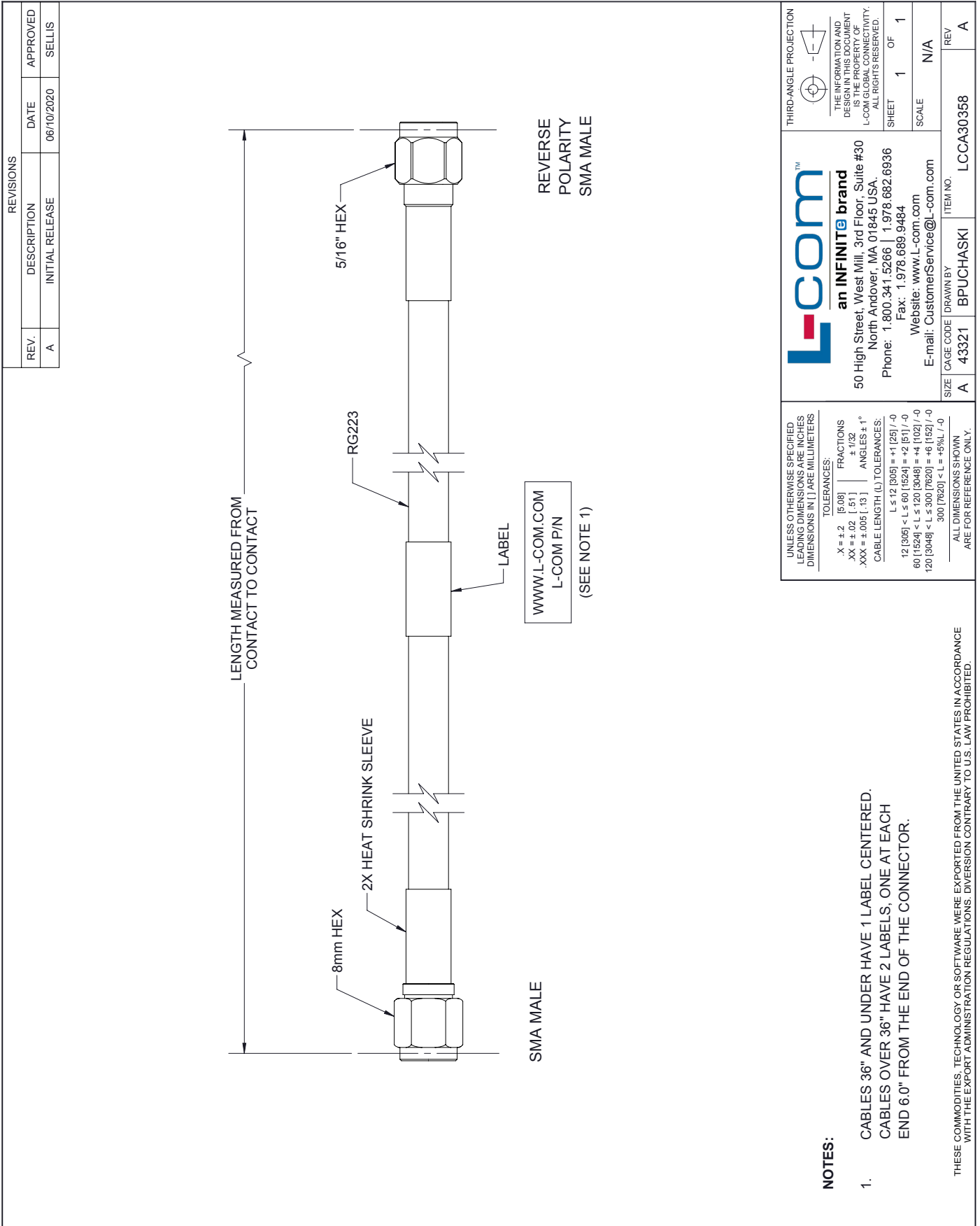
Example: LCCA30358-12 = 12 inches long cable  
LCCA30358-100cm = 100 cm long cable

SMA Male to Reverse Polarity SMA Male Cable Assembly using RG223 Coax, 6 FT from L-com has same day shipment for domestic and International orders. L-com is a leading manufacturer of wired and wireless connectivity products and committed to in-stock availability and same day shipping. Our portfolio includes coaxial cable assemblies, connectors, adapters and custom products as well as lightning and surge protectors, NEMA rated enclosures, and an RF product line which includes antennas, amplifiers, passive, and active components.

The information contained within this document is accurate to the best of our knowledge and representative of the part described herein. It may be necessary to make modifications to the part and/or the documentation of the part in order to impliment improvements. L-com reserves the right to make such changes as required. Unless otherwise stated, all specifications are nominal. L-com does not make any representation or warranty regarding the suitability of the part described herein for any particular purpose, and L-com does not assume liability arising out of the use of any part or document.ontained within this document is accurate to the best of our knowledge and representative of the part described herein. It may be necessary to make modifications to the part and/or the documentation of the part in order to impliment improvements. L-com reserves the right to make such changes as required. Unless otherwise stated, all specifications are nominal. L-com does not make any representation or warranty regarding the suitability of the part described herein for any particular purpose, and L-com does not assume liability arising out of the use of any part or document.

SMA Male to Reverse Polarity SMA Male Cable Assembly using RG223 Coax, 6 FT

L-com CAD Drawing



REVISIONS		
REV.	DESCRIPTION	DATE
A	INITIAL RELEASE	06/10/2020
		APPROVED
		SELLIS

<p><b>L-com</b><sup>TM</sup> an INFINITE brand</p> <p>50 High Street, West Mill, 3rd Floor, Suite #30 North Andover, MA 01845 USA. Phone: 1.800.341.5266   1.978.682.6936 Fax: 1.978.689.9484 Website: www.L-com.com E-mail: CustomerService@L-com.com</p>	<p>THIRD-ANGLE PROJECTION</p> <p>THE INFORMATION AND DESIGN IN THIS DOCUMENT IS THE PROPERTY OF L-COM GLOBAL CONNECTIVITY. ALL RIGHTS RESERVED.</p> <p>SHEET 1 OF 1</p> <p>SCALE N/A</p>
	<p>UNLESS OTHERWISE SPECIFIED LEADING DIMENSIONS ARE INCHES DIMENSIONS IN [ ] ARE MILLIMETERS</p> <p>TOLERANCES:</p> <p>.X = ±.2 [ .08]    FRACTIONS ± 1/32 .XX = ±.02 [ .51]    ANGLES ± 1° .XXX = ±.005 [ .13]</p> <p>CABLE LENGTH (L) TOLERANCES: L ≤ 12 [305] = ±.1 [25] / -0 12 [305] &lt; L ≤ 60 [1524] = -.2 [51] / -0 60 [1524] &lt; L ≤ 300 [7620] = -.6 [152] / -0 300 [7620] &lt; L = +5%L / -0</p> <p>ALL DIMENSIONS SHOWN ARE FOR REFERENCE ONLY.</p>

NOTES:

1. CABLES 36" AND UNDER HAVE 1 LABEL CENTERED.  
CABLES OVER 36" HAVE 2 LABELS, ONE AT EACH END 6.0" FROM THE END OF THE CONNECTOR.

THESE COMMODITIES, TECHNOLOGY OR SOFTWARE WERE EXPORTED FROM THE UNITED STATES IN ACCORDANCE WITH THE EXPORT ADMINISTRATION REGULATIONS. DIVERSION CONTRARY TO U.S. LAW PROHIBITED.