

Low Loss SMA Male Right Angle to Reverse Polarity SMA Plug Cable Assembly using 100 Series Coax, 5 FT



LCCA30384-FT5

Configuration

- Connector 1: SMA Male Right Angle
- Connector 2: SMA Plug Reverse Polarity
- Cable Type: CA-100

Features

- LMR-100 Equivalent
- Shielding Effectivity > 90 dB
- 66% Phase Velocity
- Low Insertion Loss
- Double Shielded
- PVC Jacket

Applications

- General Purpose
- Laboratory Use
- Antenna Installations
- Land Mobile Radio & Other Communication Systems
- Cellular & Wi-Fi Systems

Description

L-com's LCCA30384-FT5 is a low loss SMA male right angle to reverse polarity SMA plug cable assembly using 100 series coax, 5 FT and ships same-day. The CA-100 coax of this SMA cable uses the PE dielectric with a VoP of 66%, resulting in very low insertion loss compared to solid dielectrics. These flexible RF cable assemblies are ideal for applications where flexure is required. Our L-com SMA to SMA cable assembly has a male to plug gender configuration with flexible CA-100 series coax. The double shield of this SMA cable is layered by tinned copper braid over aluminum tape providing shielding effectiveness greater than 90dB. This right angle SMA cable interface on the CA-100 coax allows for easier connections in tight spaces.

Custom versions of this SMA male to SMA plug cable, along with the rest of L-com's other RF assemblies, can also be built and shipped same day. Other available RF cable assembly value added services from L-com include connector orientation or clocking, heat shrink booting and custom labeling. RF testing can also be performed to document the electrical performance of your cable assembly. Contact a sales representative for testing or custom RF cable quotes. Part number LCCA30384-FT5 L-com Low Loss SMA Male Right Angle to Reverse Polarity SMA Plug Cable Assembly using 100 Series Coax, 5 FT data sheet PDF includes details of the RF product specifications, CAD drawing(s) and dimensions below.

Electrical Specifications

Description	Minimum	Typical	Maximum	Units
VSWR			1.5:1	
Velocity of Propagation		66		%
RF Shielding	90			dB
Capacitance		30.8 [101.05]		pF/ft [pF/m]
DC Resistance Inner Conductor		81.07 [265.98]		Ohms/1000ft [Ohms/Km]
DC Resistance Outer Conductor		9.51 [31.2]		Ohms/1000ft [Ohms/Km]

Mechanical Specifications

Cable Assembly

Cable

Cable Type CA-100

Low Loss SMA Male Right Angle to Reverse Polarity SMA Plug Cable Assembly using 100 Series Coax, 5 FT



LCCA30384-FT5

Impedance	50 Ohms
Inner Conductor Type	Solid
Inner Conductor Material and Plating	Copper Clad Steel
Dielectric Type	PE
Number of Shields	2
Shield Layer 1	Aluminum Tape
Shield Layer 2	Tinned Copper Braid
Jacket Material	PVC, Black
Jacket Diameter	0.11 in [2.79 mm]
One Time Minimum Bend Radius	0.55 in [13.97 mm]
Repeated Minimum Bend Radius	1 in [25.4 mm]

Connectors

Description	Connector 1	Connector 2
Type	SMA Male Right Angle	SMA Plug Reverse Polarity
Specification	MIL-STD-348A	MIL-STD-348
Impedance	50 Ohms	50 Ohms
Contact Material and Plating	Brass, Gold	Gold
Contact Plating Specification	50 µin minimum	MIL-G-45204
Dielectric Type	PTFE	PTFE
Body Material and Plating	Brass, Nickel	Brass, Nickel
Body Plating Specification	100 µin minimum	QQ-N-290
Coupling Nut Material and Plating	Brass, Nickel	Brass, Nickel
Coupling Nut Plating Specification	100 µin minimum	QQ-N-290
Hex Size	5/16 inch	5/16 inch
Torque	3 in-lbs 0.34 Nm	3 in-lbs 0.34 Nm

Environmental Specifications

Temperature

Operating Range -20 to +70 deg C

Compliance Certifications (see [product page](#) for current document)

Plotted and Other Data

Notes:

Low Loss SMA Male Right Angle to Reverse Polarity SMA Plug Cable Assembly using 100 Series Coax, 5 FT

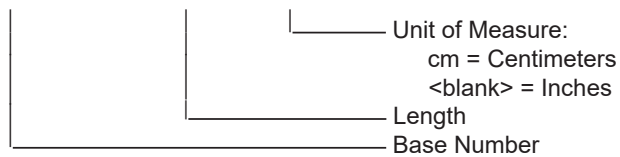


LCCA30384-FT5

How to Order

Part Number Configuration:

LCCA30384 - xx uu



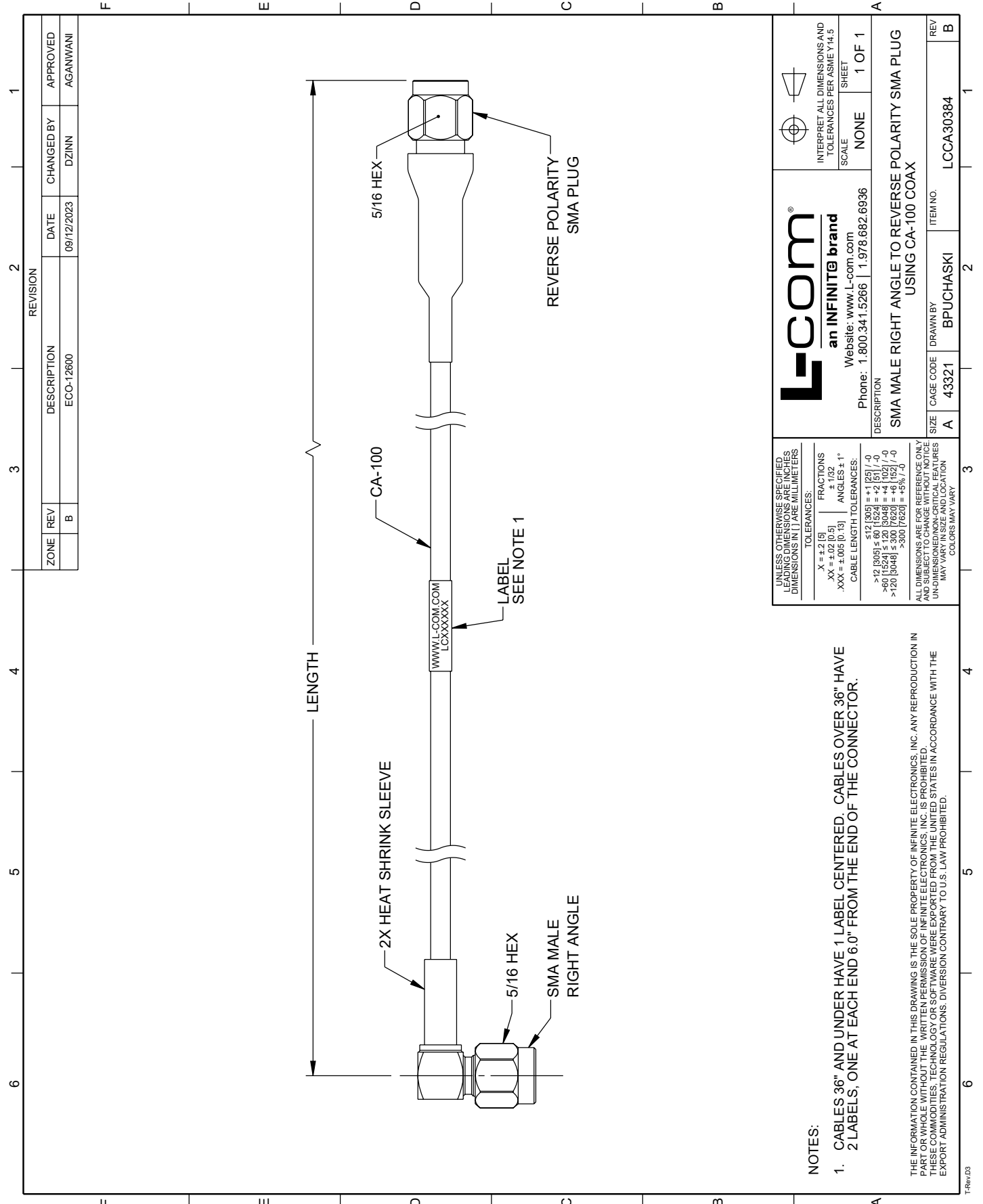
Example: LCCA30384-12 = 12 inches long cable
LCCA30384-100cm = 100 cm long cable

Low Loss SMA Male Right Angle to Reverse Polarity SMA Plug Cable Assembly using 100 Series Coax, 5 FT from L-com has same day shipment for domestic and International orders. L-com is a leading manufacturer of wired and wireless connectivity products and committed to in-stock availability and same day shipping. Our portfolio includes coaxial cable assemblies, connectors, adapters and custom products as well as lightning and surge protectors, NEMA rated enclosures, and an RF product line which includes antennas, amplifiers, passive, and active components.

The information contained within this document is accurate to the best of our knowledge and representative of the part described herein. It may be necessary to make modifications to the part and/or the documentation of the part in order to impliment improvements. L-com reserves the right to make such changes as required. Unless otherwise stated, all specifications are nominal. L-com does not make any representation or warranty regarding the suitability of the part described herein for any particular purpose, and L-com does not assume liability arising out of the use of any part or document.ontained within this document is accurate to the best of our knowledge and representative of the part described herein. It may be necessary to make modifications to the part and/or the documentation of the part in order to impliment improvements. L-com reserves the right to make such changes as required. Unless otherwise stated, all specifications are nominal. L-com does not make any representation or warranty regarding the suitability of the part described herein for any particular purpose, and L-com does not assume liability arising out of the use of any part or document.

Low Loss SMA Male Right Angle to Reverse Polarity SMA Plug Cable Assembly using 100 Series Coax, 5 FT

L-com CAD Drawing



L-com
an INFINITE brand
Website: www.L-com.com
Phone: 1.800.341.5266 | 1.978.682.6936

INTERPRET ALL DIMENSIONS AND TOLERANCES PER ASME Y14.5
SCALE NONE
SHEET 1 OF 1

UNLESS OTHERWISE SPECIFIED, LEADING DIMENSIONS ARE IN INCHES, DIMENSIONS IN [] ARE IN MILLIMETERS.
TOLERANCES:
X = ±.2 [5]
.XX = ±.02 [0.5]
.XXX = ±.005 [0.13]
FRACTIONS ± 1/32
ANGLES ± 1°
CABLE LENGTH TOLERANCES:
≤ 12 [305] = +.1 [25] / -0
> 12 [305] ≤ 60 [1524] = +.2 [51] / -0
> 60 [1524] ≤ 120 [3048] = +.4 [102] / -0
> 120 [3048] ≤ 300 [7620] = +.8 [52] / -0
> 300 [7620] = +.8 [52] / -0
ALL DIMENSIONS ARE FOR REFERENCE ONLY AND SUBJECT TO CHANGE WITHOUT NOTICE. UNLESS OTHERWISE NOTICED, DIMENSIONS MAY VARY IN SIZE AND LOCATION. COLORS MAY VARY.

DESCRIPTION
SMA MALE RIGHT ANGLE TO REVERSE POLARITY SMA PLUG USING CA-100 COAX

ITEM NO. LCCA30384

DRAWN BY BPUCHASKI

REVISION B

NOTES:

- CABLES 36" AND UNDER HAVE 1 LABEL CENTERED. CABLES OVER 36" HAVE 2 LABELS, ONE AT EACH END 6.0" FROM THE END OF THE CONNECTOR.

THE INFORMATION CONTAINED IN THIS DRAWING IS THE SOLE PROPERTY OF INFINITE ELECTRONICS, INC. ANY REPRODUCTION IN PART OR WHOLE WITHOUT THE WRITTEN PERMISSION OF INFINITE ELECTRONICS, INC. IS PROHIBITED. THESE COMMODITIES, TECHNOLOGY OR SOFTWARE WERE EXPORTED FROM THE UNITED STATES IN ACCORDANCE WITH THE EXPORT ADMINISTRATION REGULATIONS. DIVERSION CONTRARY TO U.S. LAW PROHIBITED.