

BNC Female Bulkhead to SMA Male Right Angle Cable Assembly using LC141TBJ Coax, 4 FT



LCCA30469-FT4

Configuration

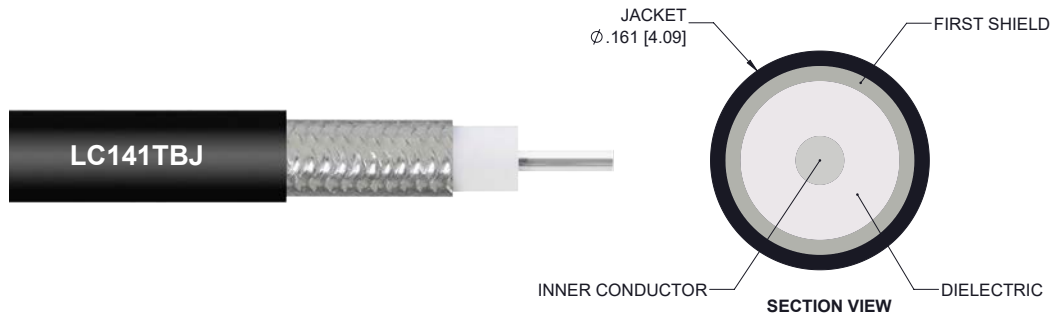
- Connector 1: BNC Female Bulkhead
- Connector 2: SMA Male Right Angle
- Cable Type: LC141TBJ

Features

- Max Frequency 1 GHz
- Shielding Effectivity > 100dB
- PTFE Dielectric with 69.9% VoP
- Hand Formable
- Tin Filled Copper Braid Outer Conductor

Applications

- General Purpose
- Laboratory Use
- System Interconnect



Description

L-com's LCCA30469-FT4 is a BNC female bulkhead to SMA male right angle cable assembly using LC141TBJ coax, 4 FT and ships same-day. The LC141TBJ coax of this BNC cable uses the PTFE dielectric with a VoP of 70%. These formable RF cable assemblies are a great alternative to expensive semi-rigid assemblies because they can be hand formed to fit specific designs. Our L-com BNC to SMA cable assembly has a female to male gender configuration with formable LC141TBJ series coax and operates to 1 GHz. The jacketed tinned copper braid outer conductor is easily formed by hand with an overall diameter of 0.161 inches and excellent shielding effectiveness greater than 100dB. L-com's RF cable assembly with BNC bulkhead interface enables system designers to have external connections on their product enclosures or to be used for other rack mount and panel mount applications. This right angle SMA cable interface on the LC141TBJ coax allows for easier connections in tight spaces.

Custom versions of this BNC female to BNC male cable, along with the rest of L-com's other RF assemblies, can also be built and shipped same day. Other available RF cable assembly value added services from L-com include connector orientation or clocking, heat shrink booting and custom labeling. RF testing can also be performed to document the electrical performance of your cable assembly. Contact a sales representative for testing or custom RF cable quotes. Part number LCCA30469-FT4 L-com BNC Female Bulkhead to SMA Male Right Angle Cable Assembly using LC141TBJ Coax, 4 FT data sheet PDF includes details of the RF product specifications, CAD drawing(s) and dimensions below.

BNC Female Bulkhead to SMA Male Right Angle Cable
Assembly using LC141TBJ Coax, 4 FT



LCCA30469-FT4

Electrical Specifications

Description	Minimum	Typical	Maximum	Units
Frequency Range	DC		1,000	MHz
VSWR			1.45:1	
Velocity of Propagation		70		%
RF Shielding	100			dB
Group Delay		1.43 [4.69]		ns/ft [ns/m]
Capacitance		29 [95.14]		pF/ft [pF/m]
DC Resistance Inner Conductor		8.23 [27]		Ohms/1000ft [Ohms/Km]

Specifications by Frequency

Description	F1	F2	F3	F4	F5	Units
Frequency	500	1,000				MHz
Insertion Loss (Max.)	0.52	0.68				dB

Electrical Specification Notes:

The Insertion Loss data above is based on the performance specifications of the coax cable and connectors used in this assembly. The Insertion Loss includes an estimated insertion loss of 0.1 dB per connector.

Mechanical Specifications

Cable Assembly

Length 48 in [121.92 cm]

Cable

Cable Type LC141TBJ
 Impedance 50 Ohms
 Inner Conductor Type Solid
 Inner Conductor Material and Plating Copper, Silver
 Dielectric Type PTFE
 Outer Conductor Material and Plating Tinned Copper Braid
 Jacket Material FEP, Black
 Jacket Diameter 0.161 in [4.09 mm]

One Time Minimum Bend Radius 0.315 in [8 mm]
 Repeated Minimum Bend Radius 1.575 in [40.01 mm]

BNC Female Bulkhead to SMA Male Right Angle Cable
Assembly using LC141TBJ Coax, 4 FT



LCCA30469-FT4

Connectors

Description	Connector 1	Connector 2
Type	BNC Female Bulkhead	SMA Male Right Angle
Impedance	50 Ohms	50 Ohms
Contact Material and Plating		Brass, Gold over Nickel
Dielectric Type		PTFE
Body Material and Plating	Brass, Nickel	Brass, Gold over Nickel
Coupling Nut Material and Plating		Passivated Stainless Steel
Hex Size		5/16 inch
Torque		8 in-lbs 0.9 Nm

Environmental Specifications

Temperature

Operating Range -65 to +150 deg C

Compliance Certifications (see [product page](#) for current document)

Plotted and Other Data

Notes:

- Values at 25°C, sea level.

BNC Female Bulkhead to SMA Male Right Angle Cable Assembly using LC141TBJ Coax, 4 FT

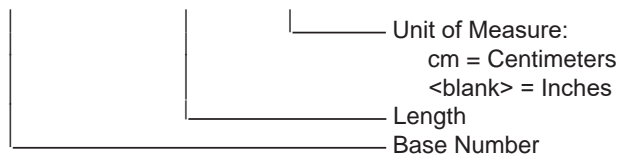


LCCA30469-FT4

How to Order

Part Number Configuration:

LCCA30469 - xx uu



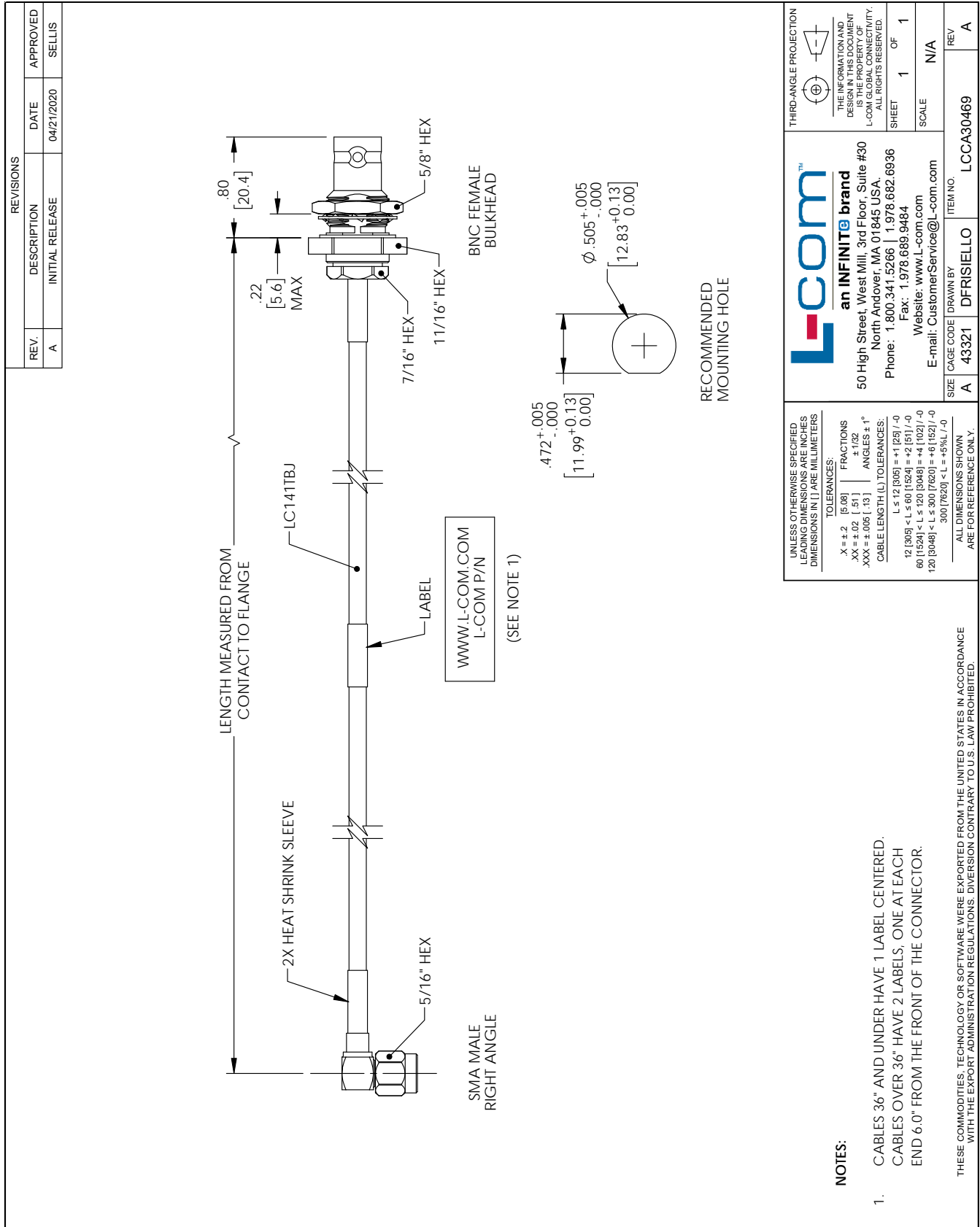
Example: LCCA30469-12 = 12 inches long cable
LCCA30469-100cm = 100 cm long cable

BNC Female Bulkhead to SMA Male Right Angle Cable Assembly using LC141TBJ Coax, 4 FT from L-com has same day shipment for domestic and International orders. L-com is a leading manufacturer of wired and wireless connectivity products and committed to in-stock availability and same day shipping. Our portfolio includes coaxial cable assemblies, connectors, adapters and custom products as well as lightning and surge protectors, NEMA rated enclosures, and an RF product line which includes antennas, amplifiers, passive, and active components.

The information contained within this document is accurate to the best of our knowledge and representative of the part described herein. It may be necessary to make modifications to the part and/or the documentation of the part in order to impliment improvements. L-com reserves the right to make such changes as required. Unless otherwise stated, all specifications are nominal. L-com does not make any representation or warranty regarding the suitability of the part described herein for any particular purpose, and L-com does not assume liability arising out of the use of any part or document.ontained within this document is accurate to the best of our knowledge and representative of the part described herein. It may be necessary to make modifications to the part and/or the documentation of the part in order to impliment improvements. L-com reserves the right to make such changes as required. Unless otherwise stated, all specifications are nominal. L-com does not make any representation or warranty regarding the suitability of the part described herein for any particular purpose, and L-com does not assume liability arising out of the use of any part or document.

BNC Female Bulkhead to SMA Male Right Angle Cable Assembly using LC141TBJ Coax, 4 FT

L-com CAD Drawing



T-Rev D