

N Male to SMA Female Bulkhead Cable Assembly  
using LC141TBJ Coax, 1 FT



## LCCA30485-FT1

### Configuration

- Connector 1: N Male
- Connector 2: SMA Female Bulkhead
- Cable Type: LC141TBJ

### Features

- Max Frequency 11 GHz
- Shielding Effectivity > 100dB
- PTFE Dielectric with 69.9% VoP
- Hand Formable
- Tin Filled Copper Braid Outer Conductor

### Applications

- General Purpose
- Laboratory Use
- System Interconnect



### Description

L-com's LCCA30485-FT1 is a N male to SMA female bulkhead cable assembly using LC141TBJ coax, 1 FT and ships same-day. The LC141TBJ coax of this N cable uses the PTFE dielectric with a VoP of 70%. These formable RF cable assemblies are a great alternative to expensive semi-rigid assemblies because they can be hand formed to fit specific designs. Our L-com N to SMA cable assembly has a male to female gender configuration with formable LC141TBJ series coax and operates to 11 GHz. The jacketed tinned copper braid outer conductor is easily formed by hand with an overall diameter of 0.161 inches and excellent shielding effectiveness greater than 100dB. L-com's RF cable assembly with SMA bulkhead interface enables system designers to have external connections on their product enclosures or to be used for other rack mount and panel mount applications.

Custom versions of this N male to N female cable, along with the rest of L-com's other RF assemblies, can also be built and shipped same day. Other available RF cable assembly value added services from L-com include connector orientation or clocking, heat shrink booting and custom labeling. RF testing can also be performed to document the electrical performance of your cable assembly. Contact a sales representative for testing or custom RF cable quotes. Part number LCCA30485-FT1 L-com N Male to SMA Female Bulkhead Cable Assembly using LC141TBJ Coax, 1 FT data sheet PDF includes details of the RF product specifications, CAD drawing(s) and dimensions below.

N Male to SMA Female Bulkhead Cable Assembly  
using LC141TBJ Coax, 1 FT



## LCCA30485-FT1

### Electrical Specifications

Description	Minimum	Typical	Maximum	Units
Frequency Range	DC		11	GHz
VSWR			1.45:1	
Velocity of Propagation		70		%
RF Shielding	100			dB
Group Delay		1.43 [4.69]		ns/ft [ns/m]
Capacitance		29 [95.14]		pF/ft [pF/m]
DC Resistance Inner Conductor		8.23 [27]		Ohms/1000ft [Ohms/Km]

### Specifications by Frequency

Description	F1	F2	F3	F4	F5	Units
Frequency	0.5	1	2.5	5	11	GHz
Insertion Loss (Max.)	0.28	0.32	0.39	0.49	0.67	dB

#### Electrical Specification Notes:

The Insertion Loss data above is based on the performance specifications of the coax cable and connectors used in this assembly. The Insertion Loss includes an estimated insertion loss of 0.1 dB per connector.

### Mechanical Specifications

#### Cable Assembly

Length 12 in [304.8 mm]  
Diameter 0.79 in [20.07 mm]

#### Cable

Cable Type LC141TBJ  
Impedance 50 Ohms  
Inner Conductor Type Solid  
Inner Conductor Material and Plating Copper, Silver  
Dielectric Type PTFE  
Outer Conductor Material and Plating Tinned Copper Braid  
Jacket Material FEP, Black  
Jacket Diameter 0.161 in [4.09 mm]

One Time Minimum Bend Radius 0.315 in [8 mm]  
Repeated Minimum Bend Radius 1.575 in [40.01 mm]

N Male to SMA Female Bulkhead Cable Assembly  
using LC141TBJ Coax, 1 FT



## LCCA30485-FT1

### Connectors

Description	Connector 1	Connector 2
Type	N Male	SMA Female Bulkhead
Impedance	50 Ohms	50 Ohms
Contact Material and Plating	Brass, Gold over Nickel	Beryllium Copper, Gold over Nickel
Dielectric Type	PTFE	PTFE
Body Material and Plating	Brass, Nickel	Brass, Gold over Nickel
Coupling Nut Material and Plating	Brass, Nickel	

### Environmental Specifications

#### Temperature

Operating Range	-65 to +150 deg C
Storage Range	+10 to +35 deg C

**Compliance Certifications** (see [product page](#) for current document)

### Plotted and Other Data

Notes:

- Values at 25°C, sea level.

N Male to SMA Female Bulkhead Cable Assembly  
using LC141TBJ Coax, 1 FT



## LCCA30485-FT1

### How to Order

Part Number Configuration:

**LCCA30485 - xx uu**



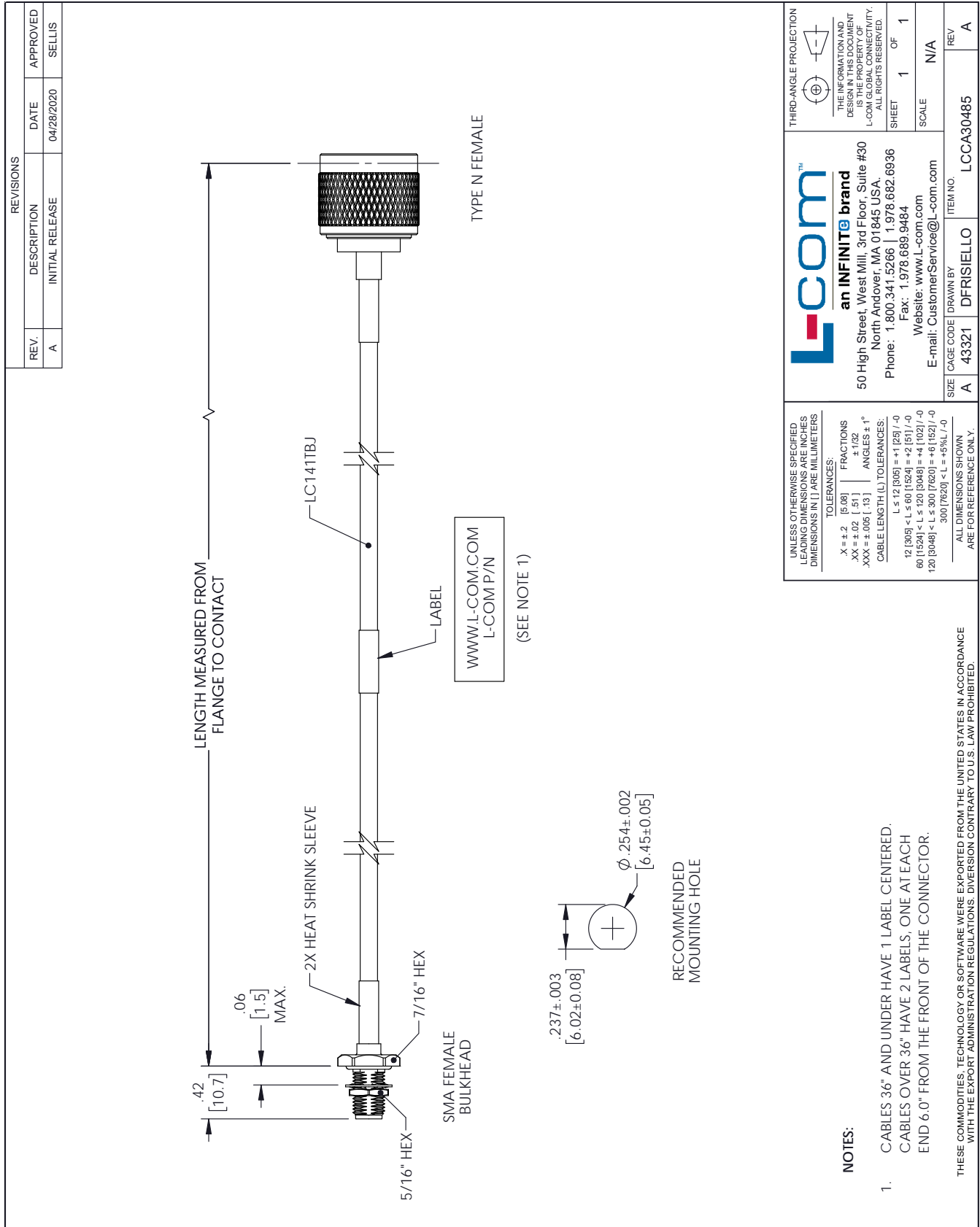
Example: LCCA30485-12 = 12 inches long cable  
LCCA30485-100cm = 100 cm long cable

N Male to SMA Female Bulkhead Cable Assembly using LC141TBJ Coax, 1 FT from L-com has same day shipment for domestic and International orders. L-com is a leading manufacturer of wired and wireless connectivity products and committed to in-stock availability and same day shipping. Our portfolio includes coaxial cable assemblies, connectors, adapters and custom products as well as lightning and surge protectors, NEMA rated enclosures, and an RF product line which includes antennas, amplifiers, passive, and active components.

The information contained within this document is accurate to the best of our knowledge and representative of the part described herein. It may be necessary to make modifications to the part and/or the documentation of the part in order to implement improvements. L-com reserves the right to make such changes as required. Unless otherwise stated, all specifications are nominal. L-com does not make any representation or warranty regarding the suitability of the part described herein for any particular purpose, and L-com does not assume liability arising out of the use of any part or document contained within this document is accurate to the best of our knowledge and representative of the part described herein. It may be necessary to make modifications to the part and/or the documentation of the part in order to implement improvements. L-com reserves the right to make such changes as required. Unless otherwise stated, all specifications are nominal. L-com does not make any representation or warranty regarding the suitability of the part described herein for any particular purpose, and L-com does not assume liability arising out of the use of any part or document.

# N Male to SMA Female Bulkhead Cable Assembly using LC141TBJ Coax, 1 FT

## L-com CAD Drawing



T-Rev D