

N Female to SMA Female Bulkhead Cable  
Assembly using LC141TBJ Coax, 3 FT



**LCCA30487-FT3**

**Configuration**

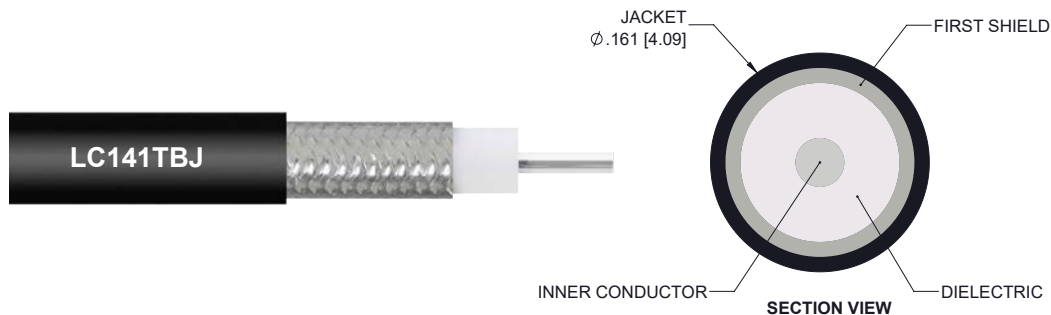
- Connector 1: N Female
- Connector 2: SMA Female Bulkhead
- Cable Type: LC141TBJ

**Features**

- Max Frequency 10 GHz
- Shielding Effectivity > 100dB
- PTFE Dielectric with 69.9% VoP
- Hand Formable
- Tin Filled Copper Braid Outer Conductor

**Applications**

- General Purpose
- Laboratory Use
- System Interconnect



**Description**

L-com's LCCA30487-FT3 is a N female to SMA female bulkhead cable assembly using LC141TBJ coax, 3 FT and ships same-day. The LC141TBJ coax of this N cable uses the PTFE dielectric with a VoP of 70%. These formable RF cable assemblies are a great alternative to expensive semi-rigid assemblies because they can be hand formed to fit specific designs. Our L-com N to SMA cable assembly has a female to female gender configuration with formable LC141TBJ series coax and operates to 10 GHz. The jacketed tinned copper braid outer conductor is easily formed by hand with an overall diameter of 0.161 inches and excellent shielding effectiveness greater than 100dB. L-com's RF cable assembly with SMA bulkhead interface enables system designers to have external connections on their product enclosures or to be used for other rack mount and panel mount applications.

Custom versions of this N female to N female cable, along with the rest of L-com's other RF assemblies, can also be built and shipped same day. Other available RF cable assembly value added services from L-com include connector orientation or clocking, heat shrink booting and custom labeling. RF testing can also be performed to document the electrical performance of your cable assembly. Contact a sales representative for testing or custom RF cable quotes. Part number LCCA30487-FT3 L-com N Female to SMA Female Bulkhead Cable Assembly using LC141TBJ Coax, 3 FT data sheet PDF includes details of the RF product specifications, CAD drawing(s) and dimensions below.

N Female to SMA Female Bulkhead Cable  
Assembly using LC141TBJ Coax, 3 FT



## LCCA30487-FT3

### Electrical Specifications

| Description                   | Minimum | Typical     | Maximum | Units                 |
|-------------------------------|---------|-------------|---------|-----------------------|
| Frequency Range               | DC      |             | 10      | GHz                   |
| VSWR                          |         |             | 1.45:1  |                       |
| Velocity of Propagation       |         | 70          |         | %                     |
| RF Shielding                  | 100     |             |         | dB                    |
| Group Delay                   |         | 1.43 [4.69] |         | ns/ft [ns/m]          |
| Capacitance                   |         | 29 [95.14]  |         | pF/ft [pF/m]          |
| DC Resistance Inner Conductor |         | 8.23 [27]   |         | Ohms/1000ft [Ohms/Km] |

### Specifications by Frequency

| Description           | F1   | F2   | F3   | F4   | F5   | Units |
|-----------------------|------|------|------|------|------|-------|
| Frequency             | 0.5  | 1    | 2.5  | 5    | 10   | GHz   |
| Insertion Loss (Max.) | 0.44 | 0.56 | 0.75 | 1.07 | 1.55 | dB    |

#### Electrical Specification Notes:

The Insertion Loss data above is based on the performance specifications of the coax cable and connectors used in this assembly. The Insertion Loss includes an estimated insertion loss of 0.1 dB per connector.

### Mechanical Specifications

#### Cable Assembly

|          |                  |
|----------|------------------|
| Length   | 36 in [914.4 mm] |
| Diameter | 0.63 in [16 mm]  |

#### Cable

|                                      |                     |
|--------------------------------------|---------------------|
| Cable Type                           | LC141TBJ            |
| Impedance                            | 50 Ohms             |
| Inner Conductor Type                 | Solid               |
| Inner Conductor Material and Plating | Copper, Silver      |
| Dielectric Type                      | PTFE                |
| Outer Conductor Material and Plating | Tinned Copper Braid |
| Jacket Material                      | FEP, Black          |
| Jacket Diameter                      | 0.161 in [4.09 mm]  |
| One Time Minimum Bend Radius         | 0.315 in [8 mm]     |
| Repeated Minimum Bend Radius         | 1.575 in [40.01 mm] |

N Female to SMA Female Bulkhead Cable  
Assembly using LC141TBJ Coax, 3 FT



## LCCA30487-FT3

### Connectors

| Description                  | Connector 1                       | Connector 2                        |
|------------------------------|-----------------------------------|------------------------------------|
| Type                         | N Female                          | SMA Female Bulkhead                |
| Impedance                    | 50 Ohms                           | 50 Ohms                            |
| Contact Material and Plating | Phosphor Bronze, Gold over Nickel | Beryllium Copper, Gold over Nickel |
| Dielectric Type              | PTFE                              | PTFE                               |
| Body Material and Plating    | Brass, Nickel                     | Brass, Gold over Nickel            |

### Environmental Specifications

#### Temperature

|                 |                   |
|-----------------|-------------------|
| Operating Range | -65 to +150 deg C |
| Storage Range   | +10 to +35 deg C  |

**Compliance Certifications** (see [product page](#) for current document)

### Plotted and Other Data

Notes:

- Values at 25°C, sea level.

N Female to SMA Female Bulkhead Cable Assembly using LC141TBJ Coax, 3 FT



## LCCA30487-FT3

### How to Order

Part Number Configuration:

**LCCA30487 - xx uu**



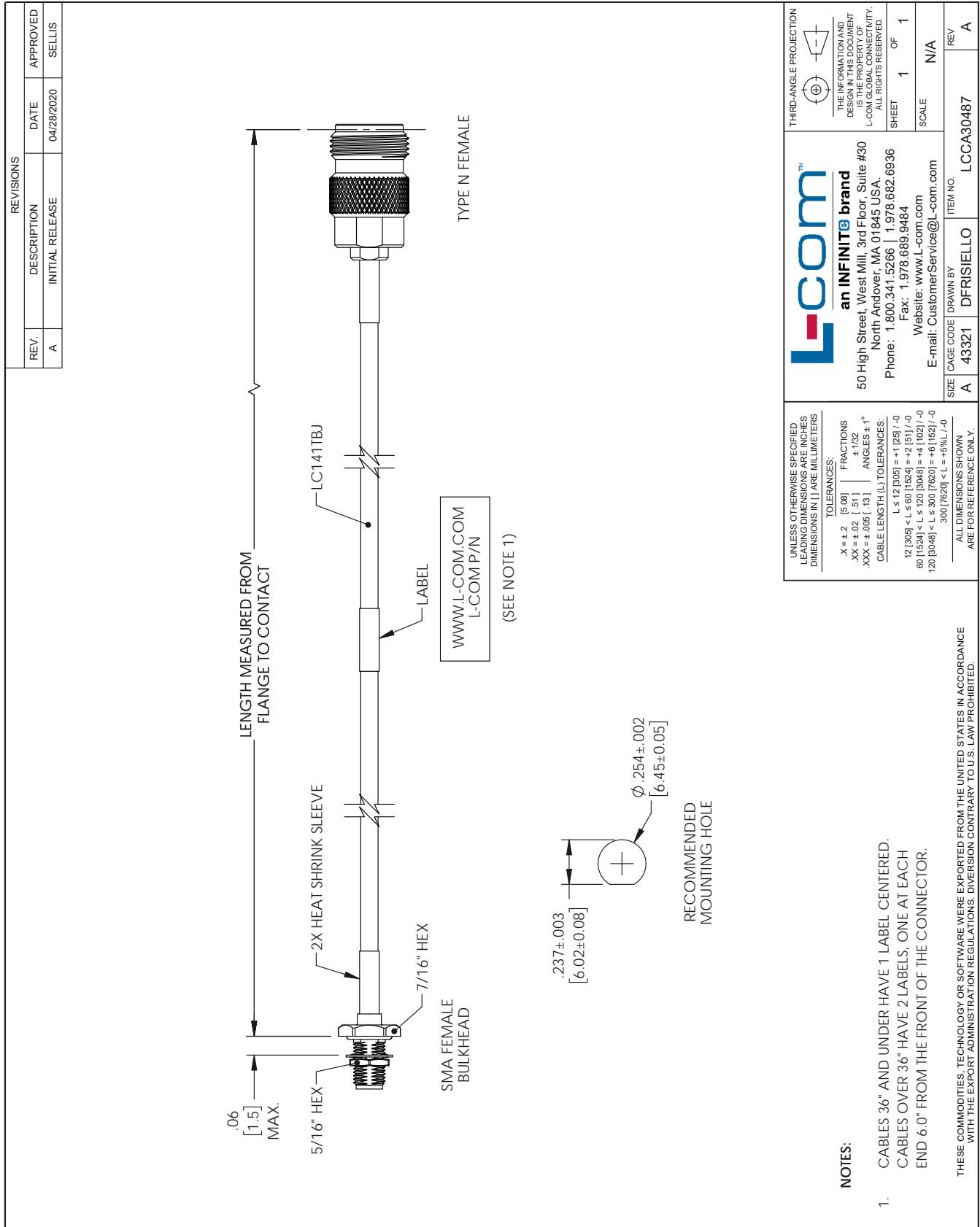
Example: LCCA30487-12 = 12 inches long cable  
LCCA30487-100cm = 100 cm long cable

N Female to SMA Female Bulkhead Cable Assembly using LC141TBJ Coax, 3 FT from L-com has same day shipment for domestic and International orders. L-com is a leading manufacturer of wired and wireless connectivity products and committed to in-stock availability and same day shipping. Our portfolio includes coaxial cable assemblies, connectors, adapters and custom products as well as lightning and surge protectors, NEMA rated enclosures, and an RF product line which includes antennas, amplifiers, passive, and active components.

The information contained within this document is accurate to the best of our knowledge and representative of the part described herein. It may be necessary to make modifications to the part and/or the documentation of the part in order to impliment improvements. L-com reserves the right to make such changes as required. Unless otherwise stated, all specifications are nominal. L-com does not make any representation or warranty regarding the suitability of the part described herein for any particular purpose, and L-com does not assume liability arising out of the use of any part or document.ontained within this document is accurate to the best of our knowledge and representative of the part described herein. It may be necessary to make modifications to the part and/or the documentation of the part in order to impliment improvements. L-com reserves the right to make such changes as required. Unless otherwise stated, all specifications are nominal. L-com does not make any representation or warranty regarding the suitability of the part described herein for any particular purpose, and L-com does not assume liability arising out of the use of any part or document.

# N Female to SMA Female Bulkhead Cable Assembly using LC141TBJ Coax, 3 FT

## L-com CAD Drawing



**L-com**  
an INFINITE brand

50 High Street, West Mill, 3rd Floor, Suite #30  
North Andover, MA 01845 USA  
Phone: 1.800.341.5266 | 1.978.682.6936  
Fax: 1.978.689.9484  
Website: www.L-com.com  
E-mail: CustomerService@L-com.com

UNLESS OTHERWISE SPECIFIED, LEADING DIMENSIONS ARE INCHES DIMENSIONS IN [ ] ARE MILLIMETERS

TOLERANCES:

|              |       |             |
|--------------|-------|-------------|
| X = ±.2      | [.06] | FRACTIONS   |
| .XX = ±.02   | [.51] | ±.1/32      |
| .XXX = ±.005 | [.13] | ANGLES ± 1° |

CABLE LENGTH (L) TOLERANCES:

|                             |                 |
|-----------------------------|-----------------|
| L ≤ 12 [305]                | = +1 [25] / -0  |
| 12 [305] < L ≤ 60 [1524]    | = +2 [51] / -0  |
| 60 [1524] < L ≤ 120 [3048]  | = +4 [102] / -0 |
| 120 [3048] < L ≤ 300 [7620] | = +6 [152] / -0 |
| 300 [7620] < L              | = +5% L / -0    |

ALL DIMENSIONS SHOWN ARE FOR REFERENCE ONLY.

SIZE A CAGE CODE 43321 DRAWN BY DFRISIELLO ITEM NO. LCCA30487

- NOTES:**
- CABLES 36" AND UNDER HAVE 1 LABEL CENTERED.  
CABLES OVER 36" HAVE 2 LABELS, ONE AT EACH END 6.0" FROM THE FRONT OF THE CONNECTOR.
- THESE COMMODITIES, TECHNOLOGY OR SOFTWARE WERE EXPORTED FROM THE UNITED STATES IN ACCORDANCE WITH THE EXPORT ADMINISTRATION REGULATIONS. DIVERSION CONTRARY TO U.S. LAW PROHIBITED.

T-Rev D