

BNC Female Bulkhead to SMA Female Cable  
Assembly using LC085TB Coax, 10 FT



**LCCA30537-FT10**

**Configuration**

- Connector 1: BNC Female Bulkhead
- Connector 2: SMA Female
- Cable Type: LC085TB

**Features**

- Max Frequency 1 GHz
- Shielding Effectivity > 100dB
- PTFE Dielectric with 69.5% VoP
- Hand Formable
- Tin Filled Copper Composite Braid Outer Conductor

**Applications**

- General Purpose
- Laboratory Use
- System Interconnect



**Description**

L-com's LCCA30537-FT10 is a BNC female bulkhead to SMA female cable assembly using LC085TB coax, 10 FT and ships same-day. The LC085TB coax of this BNC cable uses the PTFE dielectric with a VoP of 69.5%. These formable RF cable assemblies are a great alternative to expensive semi-rigid assemblies because they can be hand formed to fit specific designs. Our L-com BNC to SMA cable assembly has a female to female gender configuration with formable LC085TB series coax and operates to 1 GHz. The tin plated copper outer conductor can be easily formed by hand and has an overall diameter of 0.085 inches. L-com's RF cable assembly with BNC bulkhead interface enables system designers to have external connections on their product enclosures or to be used for other rack mount and panel mount applications.

Custom versions of this BNC female to BNC female cable, along with the rest of L-com's other RF assemblies, can also be built and shipped same day. Other available RF cable assembly value added services from L-com include connector orientation or clocking, heat shrink booting and custom labeling. RF testing can also be performed to document the electrical performance of your cable assembly. Contact a sales representative for testing or custom RF cable quotes. Part number LCCA30537-FT10 L-com BNC Female Bulkhead to SMA Female Cable Assembly using LC085TB Coax, 10 FT data sheet PDF includes details of the RF product specifications, CAD drawing(s) and dimensions below.

BNC Female Bulkhead to SMA Female Cable  
Assembly using LC085TB Coax, 10 FT



## LCCA30537-FT10

### Electrical Specifications

Description	Minimum	Typical	Maximum	Units
Frequency Range	DC		1,000	MHz
VSWR			1.45:1	
Velocity of Propagation		69.5		%
Capacitance		29 [95.14]		pF/ft [pF/m]
DC Resistance Inner Conductor		65.7 [215.55]		Ohms/1000ft [Ohms/Km]
DC Resistance Outer Conductor		10.2 [33.46]		Ohms/1000ft [Ohms/Km]

### Specifications by Frequency

Description	F1	F2	F3	F4	F5	Units
Frequency	500	1,000				MHz
Insertion Loss (Typ.)	1.7	2.5				dB

#### Electrical Specification Notes:

The Insertion Loss data above is based on the performance specifications of the coax cable and connectors used in this assembly. The Insertion Loss includes an estimated insertion loss of 0.1 dB per connector.

### Mechanical Specifications

#### Cable Assembly

Length 120 in [304.8 cm]

#### Cable

Cable Type LC085TB  
 Impedance 50 Ohms  
 Inner Conductor Type Solid  
 Inner Conductor Material and Plating Copper Clad Steel, Silver  
 Dielectric Type PTFE  
 Number of Shields 1  
 Outer Conductor Material and Plating Copper, Tin  
 Outer Conductor Diameter 0.085 in [2.16 mm]  
 Repeated Minimum Bend Radius 0.78 in [19.81 mm]

BNC Female Bulkhead to SMA Female Cable  
Assembly using LC085TB Coax, 10 FT



## LCCA30537-FT10

### Connectors

Description	Connector 1	Connector 2
Type	BNC Female Bulkhead	SMA Female
Impedance	50 Ohms	50 Ohms
Contact Material and Plating	Brass, Gold	Beryllium Copper, Gold over Nickel
Contact Plating Specification	30 µin minimum	
Dielectric Type	PTFE	PTFE
Body Material and Plating	Brass, Nickel	Brass, Gold over Nickel
Body Plating Specification	100 µin minimum	
Seal Gasket Material	Silicone	

**Compliance Certifications** (see [product page](#) for current document)

### Plotted and Other Data

Notes:

BNC Female Bulkhead to SMA Female Cable  
Assembly using LC085TB Coax, 10 FT



## LCCA30537-FT10

### How to Order

Part Number Configuration:

**LCCA30537 - xx uu**



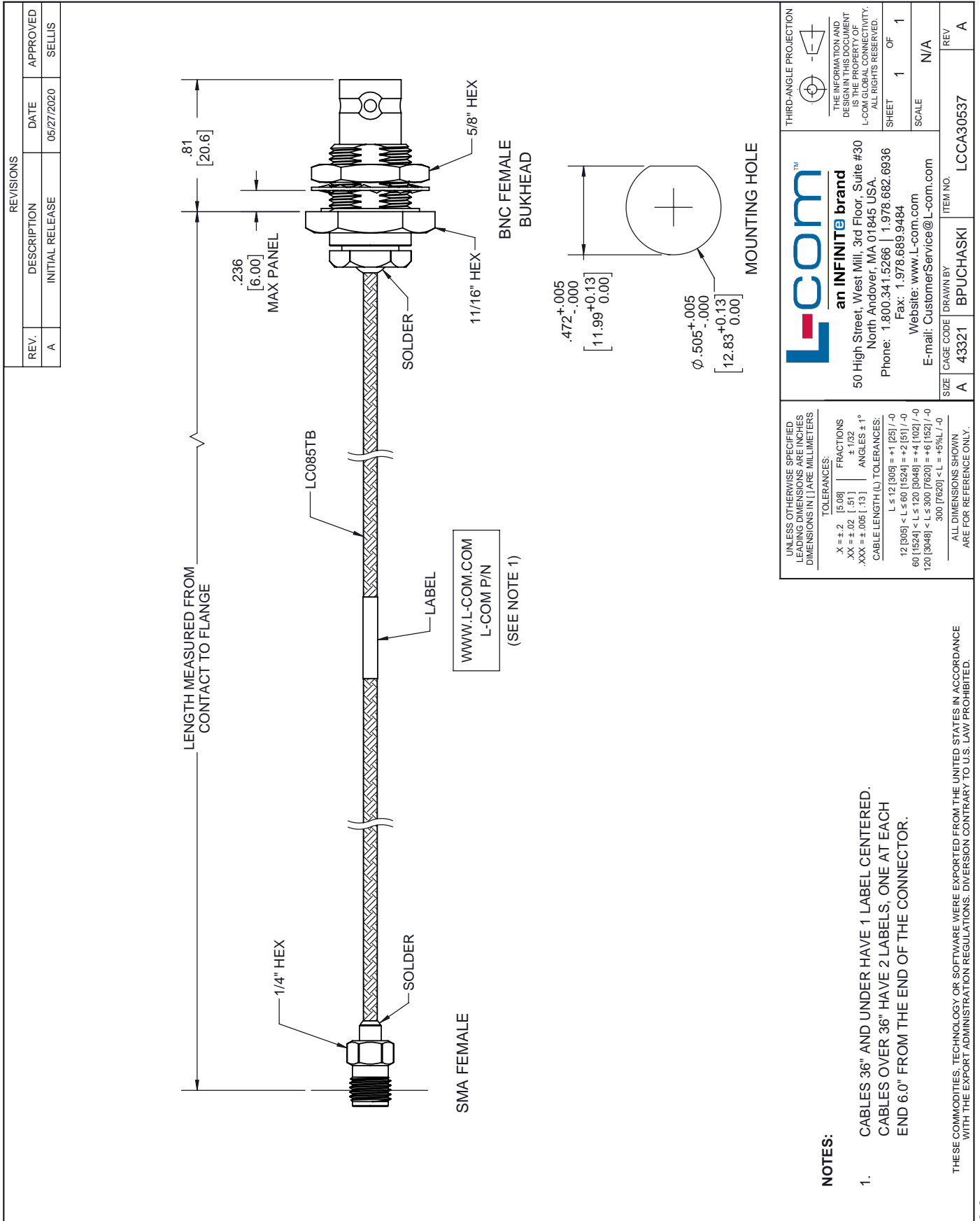
Example: LCCA30537-12 = 12 inches long cable  
LCCA30537-100cm = 100 cm long cable

BNC Female Bulkhead to SMA Female Cable Assembly using LC085TB Coax, 10 FT from L-com has same day shipment for domestic and International orders. L-com is a leading manufacturer of wired and wireless connectivity products and committed to in-stock availability and same day shipping. Our portfolio includes coaxial cable assemblies, connectors, adapters and custom products as well as lightning and surge protectors, NEMA rated enclosures, and an RF product line which includes antennas, amplifiers, passive, and active components.

The information contained within this document is accurate to the best of our knowledge and representative of the part described herein. It may be necessary to make modifications to the part and/or the documentation of the part in order to implement improvements. L-com reserves the right to make such changes as required. Unless otherwise stated, all specifications are nominal. L-com does not make any representation or warranty regarding the suitability of the part described herein for any particular purpose, and L-com does not assume liability arising out of the use of any part or document contained within this document is accurate to the best of our knowledge and representative of the part described herein. It may be necessary to make modifications to the part and/or the documentation of the part in order to implement improvements. L-com reserves the right to make such changes as required. Unless otherwise stated, all specifications are nominal. L-com does not make any representation or warranty regarding the suitability of the part described herein for any particular purpose, and L-com does not assume liability arising out of the use of any part or document.

# BNC Female Bulkhead to SMA Female Cable Assembly using LC085TB Coax, 10 FT

## L-com CAD Drawing



 <b>an INFINITE brand</b> 50 High Street, West Mill, 3rd Floor, Suite #30 North Andover, MA 01845 USA. Phone: 1.800.341.5266   1.978.682.6936 Fax: 1.978.689.9484 Website: www.L-com.com E-mail: CustomerService@L-com.com	THIRD-ANGLE PROJECTION  THE INFORMATION AND DESIGN IN THIS DOCUMENT IS THE PROPERTY OF L-COM GLOBAL CONNECTIVITY. ALL RIGHTS RESERVED. SHEET 1 OF 1 SCALE N/A	SIZE A CAGE CODE 43321 DRAWN BY BPUCHASKI ITEM NO. LCCA30537 REV A
UNLESS OTHERWISE SPECIFIED LEADING DIMENSIONS ARE INCHES DIMENSIONS IN [ ] ARE MILLIMETERS TOLERANCES: .X ± .2 [5.08]    FRACTIONS ± 1/32 .XX ± .02 [ .51]    ANGLES ± 1° .XXX ± .005 [ .13]    CABLE LENGTH (L) TOLERANCES: L ≤ 12 [305] = ± 1 [25] / -0 12 [305] < L ≤ 60 [1524] = ± 2 [51] / -0 60 [1524] < L ≤ 120 [3048] = ± 4 [102] / -0 120 [3048] < L ≤ 300 [7620] = ± 6 [152] / -0 300 [7620] < L = ± 9% L / -0 ALL DIMENSIONS SHOWN ARE FOR REFERENCE ONLY.		