

BNC Female to SMA Female Bulkhead Cable  
Assembly using LC085TB Coax, 1.5 FT



**LCCA30538-FT1.5**

**Configuration**

- Connector 1: BNC Female
- Connector 2: SMA Female Bulkhead
- Cable Type: LC085TB

**Features**

- Max Frequency 1 GHz
- Shielding Effectivity > 100dB
- PTFE Dielectric with 69.5% VoP
- Hand Formable
- Tin Filled Copper Composite Braid Outer Conductor

**Applications**

- General Purpose
- Laboratory Use
- System Interconnect



**Description**

L-com's LCCA30538-FT1.5 is a BNC female to SMA female bulkhead cable assembly using LC085TB coax, 1.5 FT and ships same-day. The LC085TB coax of this BNC cable uses the PTFE dielectric with a VoP of 69.5%. These formable RF cable assemblies are a great alternative to expensive semi-rigid assemblies because they can be hand formed to fit specific designs. Our L-com BNC to SMA cable assembly has a female to female gender configuration with formable LC085TB series coax and operates to 1 GHz. The tin plated copper outer conductor can be easily formed by hand and has an overall diameter of 0.085 inches. L-com's RF cable assembly with SMA bulkhead interface enables system designers to have external connections on their product enclosures or to be used for other rack mount and panel mount applications.

Custom versions of this BNC female to BNC female cable, along with the rest of L-com's other RF assemblies, can also be built and shipped same day. Other available RF cable assembly value added services from L-com include connector orientation or clocking, heat shrink booting and custom labeling. RF testing can also be performed to document the electrical performance of your cable assembly. Contact a sales representative for testing or custom RF cable quotes. Part number LCCA30538-FT1.5 L-com BNC Female to SMA Female Bulkhead Cable Assembly using LC085TB Coax, 1.5 FT data sheet PDF includes details of the RF product specifications, CAD drawing(s) and dimensions below.

BNC Female to SMA Female Bulkhead Cable  
Assembly using LC085TB Coax, 1.5 FT



## LCCA30538-FT1.5

### Electrical Specifications

| Description                   | Minimum | Typical       | Maximum | Units                 |
|-------------------------------|---------|---------------|---------|-----------------------|
| Frequency Range               | DC      |               | 1,000   | MHz                   |
| VSWR                          |         |               | 1.45:1  |                       |
| Velocity of Propagation       |         | 69.5          |         | %                     |
| Capacitance                   |         | 29 [95.14]    |         | pF/ft [pF/m]          |
| DC Resistance Inner Conductor |         | 65.7 [215.55] |         | Ohms/1000ft [Ohms/Km] |
| DC Resistance Outer Conductor |         | 10.2 [33.46]  |         | Ohms/1000ft [Ohms/Km] |

### Specifications by Frequency

| Description           | F1   | F2    | F3 | F4 | F5 | Units |
|-----------------------|------|-------|----|----|----|-------|
| Frequency             | 500  | 1,000 |    |    |    | MHz   |
| Insertion Loss (Typ.) | 0.43 | 0.55  |    |    |    | dB    |

#### Electrical Specification Notes:

The Insertion Loss data above is based on the performance specifications of the coax cable and connectors used in this assembly. The Insertion Loss includes an estimated insertion loss of 0.1 dB per connector.

### Mechanical Specifications

#### Cable Assembly

Length 18 in [457.2 mm]

#### Cable

Cable Type LC085TB  
 Impedance 50 Ohms  
 Inner Conductor Type Solid  
 Inner Conductor Material and Plating Copper Clad Steel, Silver  
 Dielectric Type PTFE  
 Number of Shields 1  
 Outer Conductor Material and Plating Copper, Tin  
 Outer Conductor Diameter 0.085 in [2.16 mm]  
 Repeated Minimum Bend Radius 0.78 in [19.81 mm]

BNC Female to SMA Female Bulkhead Cable  
Assembly using LC085TB Coax, 1.5 FT



## LCCA30538-FT1.5

### Connectors

| Description                   | Connector 1     | Connector 2                        |
|-------------------------------|-----------------|------------------------------------|
| Type                          | BNC Female      | SMA Female Bulkhead                |
| Impedance                     | 50 Ohms         | 50 Ohms                            |
| Contact Material and Plating  | Brass, Gold     | Beryllium Copper, Gold over Nickel |
| Contact Plating Specification | 30 µin minimum  |                                    |
| Dielectric Type               | PTFE            | PTFE                               |
| Body Material and Plating     | Brass, Nickel   | Brass, Gold over Nickel            |
| Body Plating Specification    | 100 µin minimum |                                    |
| Seal Gasket Material          | Silicone        |                                    |

**Compliance Certifications** (see [product page](#) for current document)

### Plotted and Other Data

Notes:

BNC Female to SMA Female Bulkhead Cable  
Assembly using LC085TB Coax, 1.5 FT



## LCCA30538-FT1.5

### How to Order

Part Number Configuration:

**LCCA30538 - xx uu**



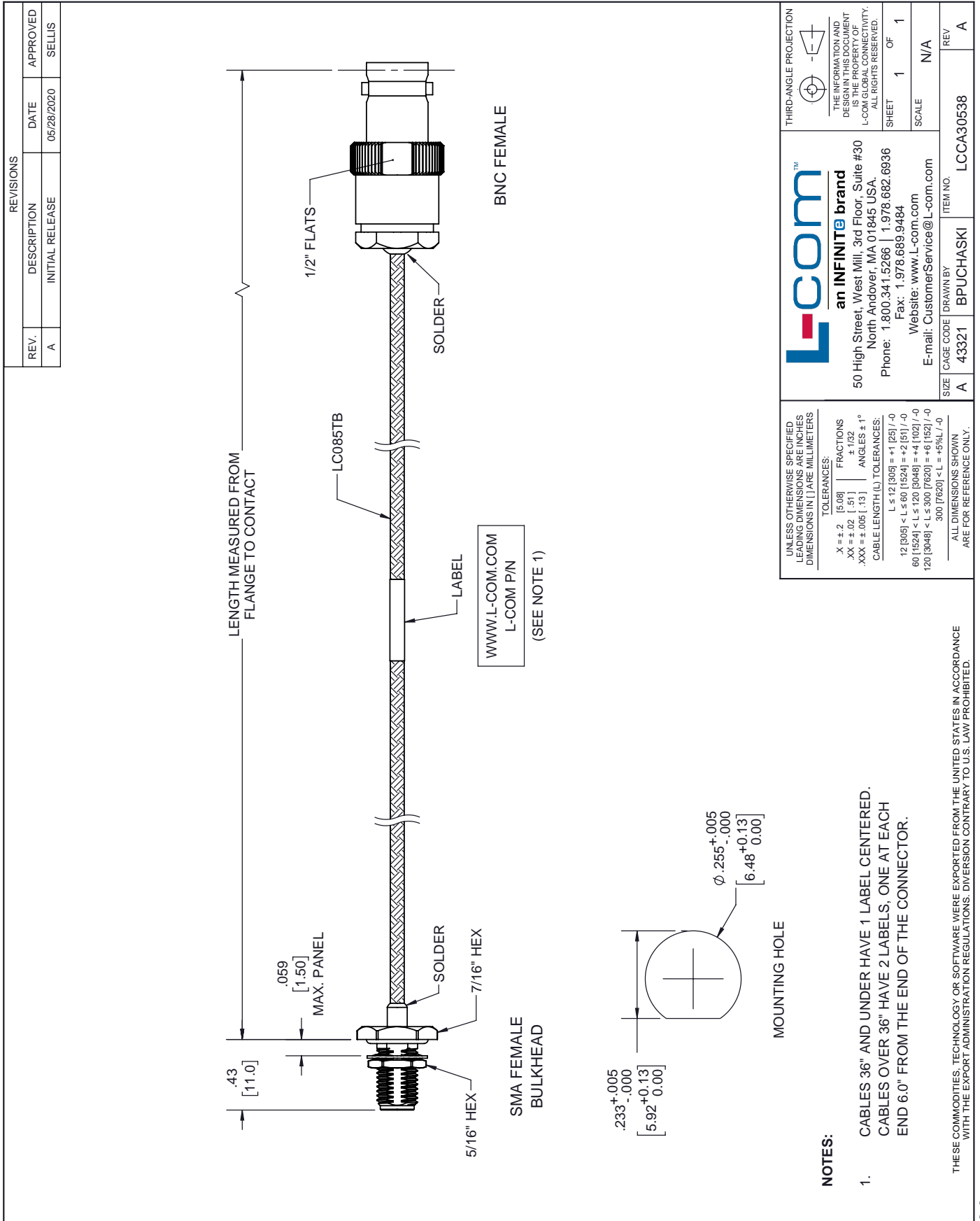
Example: LCCA30538-12 = 12 inches long cable  
LCCA30538-100cm = 100 cm long cable

BNC Female to SMA Female Bulkhead Cable Assembly using LC085TB Coax, 1.5 FT from L-com has same day shipment for domestic and International orders. L-com is a leading manufacturer of wired and wireless connectivity products and committed to in-stock availability and same day shipping. Our portfolio includes coaxial cable assemblies, connectors, adapters and custom products as well as lightning and surge protectors, NEMA rated enclosures, and an RF product line which includes antennas, amplifiers, passive, and active components.

The information contained within this document is accurate to the best of our knowledge and representative of the part described herein. It may be necessary to make modifications to the part and/or the documentation of the part in order to implement improvements. L-com reserves the right to make such changes as required. Unless otherwise stated, all specifications are nominal. L-com does not make any representation or warranty regarding the suitability of the part described herein for any particular purpose, and L-com does not assume liability arising out of the use of any part or document contained within this document is accurate to the best of our knowledge and representative of the part described herein. It may be necessary to make modifications to the part and/or the documentation of the part in order to implement improvements. L-com reserves the right to make such changes as required. Unless otherwise stated, all specifications are nominal. L-com does not make any representation or warranty regarding the suitability of the part described herein for any particular purpose, and L-com does not assume liability arising out of the use of any part or document.

# BNC Female to SMA Female Bulkhead Cable Assembly using LC085TB Coax, 1.5 FT

## L-com CAD Drawing



**L-com™**  
an INFINITE brand

50 High Street, West Mill, 3rd Floor, Suite #30  
North Andover, MA 01845 USA.  
Phone: 1.800.341.5266 | 1.978.682.6936  
Fax: 1.978.689.9484  
Website: [www.L-com.com](http://www.L-com.com)  
E-mail: [CustomerService@L-com.com](mailto:CustomerService@L-com.com)

THIRD-ANGLE PROJECTION

THE INFORMATION AND DESIGN IN THIS DOCUMENT IS THE PROPERTY OF L-COM GLOBAL CONNECTIVITY. ALL RIGHTS RESERVED.  
 SHEET 1 OF 1  
 SCALE N/A

|      |           |           |           |
|------|-----------|-----------|-----------|
| SIZE | CAGE CODE | DRAWN BY  | ITEM NO.  |
| A    | 43321     | BPUCHASKI | LCCA30538 |
|      |           |           | REV<br>A  |