

N Male Right Angle to SMA Female Bulkhead Cable  
Assembly using LC085TB Coax, 4 FT



**LCCA30552-FT4**

**Configuration**

- Connector 1: N Male Right Angle
- Connector 2: SMA Female Bulkhead
- Cable Type: LC085TB

**Features**

- Max Frequency 10 GHz
- Shielding Effectivity > 100dB
- PTFE Dielectric with 69.5% VoP
- Hand Formable
- Tin Filled Copper Composite Braid Outer Conductor

**Applications**

- General Purpose
- Laboratory Use
- System Interconnect



**Description**

L-com's LCCA30552-FT4 is a N male right angle to SMA female bulkhead cable assembly using LC085TB coax, 4 FT and ships same-day. These formable RF cable assemblies are a great alternative to expensive semi-rigid assemblies because they can be hand formed to fit specific designs. Our L-com N to SMA cable assembly has a male to female gender configuration with formable LC085TB series coax and operates to 10 GHz. The tin plated copper outer conductor can be easily formed by hand and has an overall diameter of 0.085 inches. L-com's RF cable assembly with SMA bulkhead interface enables system designers to have external connections on their product enclosures or to be used for other rack mount and panel mount applications. This right angle N cable interface on the LC085TB coax allows for easier connections in tight spaces.

Custom versions of this N male to N female cable, along with the rest of L-com's other RF assemblies, can also be built and shipped same day. Other available RF cable assembly value added services from L-com include connector orientation or clocking, heat shrink booting and custom labeling. RF testing can also be performed to document the electrical performance of your cable assembly. Contact a sales representative for testing or custom RF cable quotes. Part number LCCA30552-FT4 L-com N Male Right Angle to SMA Female Bulkhead Cable Assembly using LC085TB Coax, 4 FT data sheet PDF includes details of the RF product specifications, CAD drawing(s) and dimensions below.

N Male Right Angle to SMA Female Bulkhead Cable  
Assembly using LC085TB Coax, 4 FT



## LCCA30552-FT4

### Electrical Specifications

| Description                   | Minimum | Typical       | Maximum | Units                 |
|-------------------------------|---------|---------------|---------|-----------------------|
| Frequency Range               | DC      |               | 10      | GHz                   |
| VSWR                          |         |               | 1.45:1  |                       |
| Velocity of Propagation       |         | 69.5          |         | %                     |
| Capacitance                   |         | 29 [95.14]    |         | pF/ft [pF/m]          |
| DC Resistance Inner Conductor |         | 65.7 [215.55] |         | Ohms/1000ft [Ohms/Km] |
| DC Resistance Outer Conductor |         | 10.2 [33.46]  |         | Ohms/1000ft [Ohms/Km] |

### Specifications by Frequency

| Description           | F1  | F2   | F3  | F4  | F5   | Units |
|-----------------------|-----|------|-----|-----|------|-------|
| Frequency             | 0.5 | 1    | 2.5 | 5   | 10   | GHz   |
| Insertion Loss (Typ.) | 0.9 | 1.22 | 1.7 | 2.5 | 3.54 | dB    |

#### Electrical Specification Notes:

The Insertion Loss data above is based on the performance specifications of the coax cable and connectors used in this assembly. The Insertion Loss includes an estimated insertion loss of 0.1 dB for the straight connector and 0.2 dB for the right angle connector.

### Mechanical Specifications

#### Cable Assembly

Length 48 in [121.92 cm]  
Diameter 0.79 in [20.07 mm]

#### Cable

Cable Type LC085TB  
Impedance 50 Ohms  
Inner Conductor Type Solid  
Inner Conductor Material and Plating Copper Clad Steel, Silver  
Dielectric Type PTFE  
Number of Shields 1  
Outer Conductor Material and Plating Copper, Tin  
Outer Conductor Diameter 0.085 in [2.16 mm]  
  
Repeated Minimum Bend Radius 0.78 in [19.81 mm]

N Male Right Angle to SMA Female Bulkhead Cable Assembly using LC085TB Coax, 4 FT



## LCCA30552-FT4

### Connectors

| Description                       | Connector 1        | Connector 2                        |
|-----------------------------------|--------------------|------------------------------------|
| Type                              | N Male Right Angle | SMA Female Bulkhead                |
| Impedance                         | 50 Ohms            | 50 Ohms                            |
| Contact Material and Plating      | Brass, Gold        | Beryllium Copper, Gold over Nickel |
| Dielectric Type                   | PTFE               | PTFE                               |
| Body Material and Plating         | Brass, Nickel      | Brass, Gold over Nickel            |
| Coupling Nut Material and Plating | Brass, Nickel      |                                    |

**Compliance Certifications** (see [product page](#) for current document)

### Plotted and Other Data

Notes:

N Male Right Angle to SMA Female Bulkhead Cable Assembly using LC085TB Coax, 4 FT



**LCCA30552-FT4**

**How to Order**

Part Number Configuration:

**LCCA30552 - xx uu**



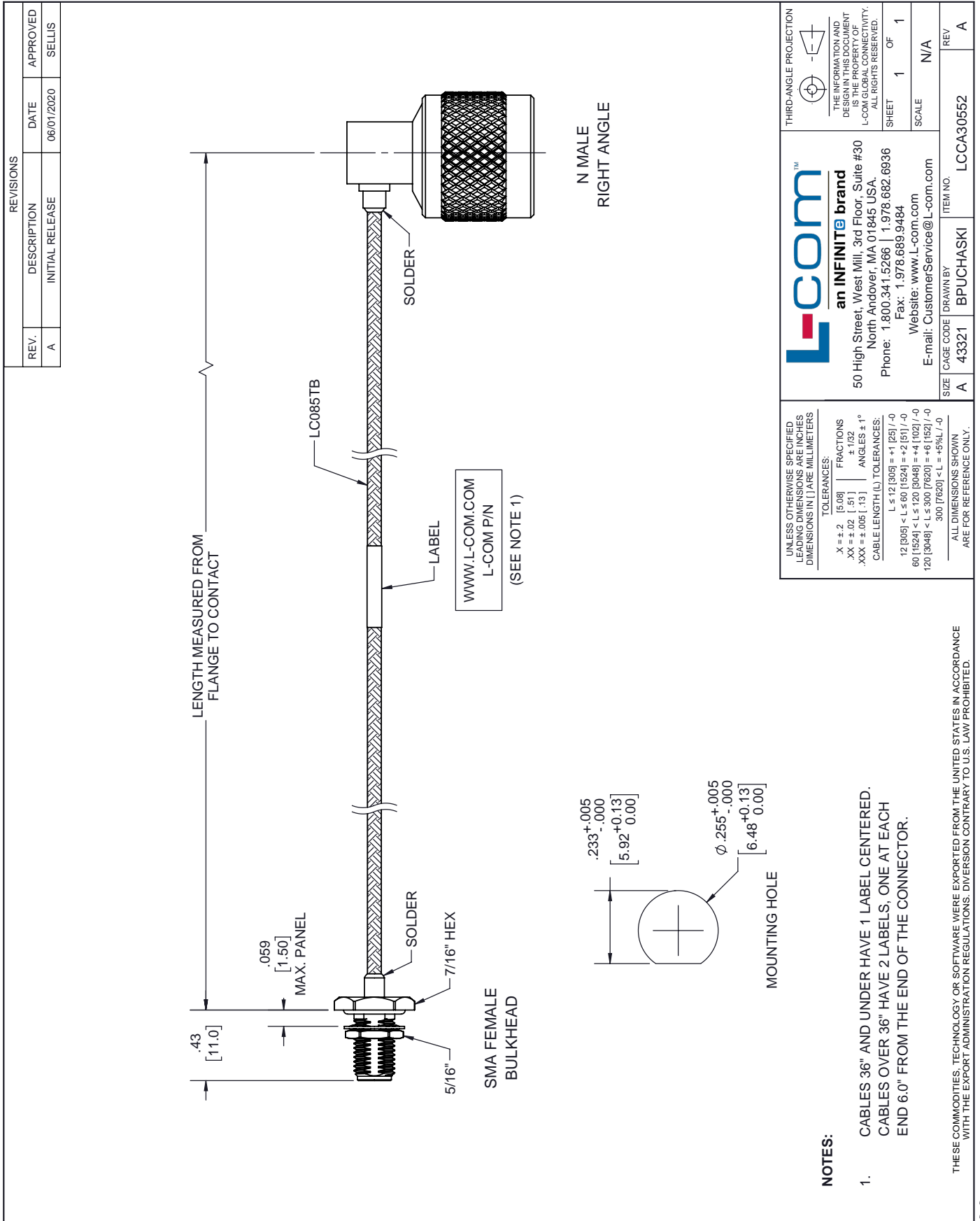
Example: LCCA30552-12 = 12 inches long cable  
LCCA30552-100cm = 100 cm long cable

N Male Right Angle to SMA Female Bulkhead Cable Assembly using LC085TB Coax, 4 FT from L-com has same day shipment for domestic and International orders. L-com is a leading manufacturer of wired and wireless connectivity products and committed to in-stock availability and same day shipping. Our portfolio includes coaxial cable assemblies, connectors, adapters and custom products as well as lightning and surge protectors, NEMA rated enclosures, and an RF product line which includes antennas, amplifiers, passive, and active components.

The information contained within this document is accurate to the best of our knowledge and representative of the part described herein. It may be necessary to make modifications to the part and/or the documentation of the part in order to impliment improvements. L-com reserves the right to make such changes as required. Unless otherwise stated, all specifications are nominal. L-com does not make any representation or warranty regarding the suitability of the part described herein for any particular purpose, and L-com does not assume liability arising out of the use of any part or document.ontained within this document is accurate to the best of our knowledge and representative of the part described herein. It may be necessary to make modifications to the part and/or the documentation of the part in order to impliment improvements. L-com reserves the right to make such changes as required. Unless otherwise stated, all specifications are nominal. L-com does not make any representation or warranty regarding the suitability of the part described herein for any particular purpose, and L-com does not assume liability arising out of the use of any part or document.

# N Male Right Angle to SMA Female Bulkhead Cable Assembly using LC085TB Coax, 4 FT

## L-com CAD Drawing



### NOTES:

- CABLES 36" AND UNDER HAVE 1 LABEL CENTERED. CABLES OVER 36" HAVE 2 LABELS, ONE AT EACH END 6.0" FROM THE END OF THE CONNECTOR.

THESE COMMODITIES, TECHNOLOGY OR SOFTWARE WERE EXPORTED FROM THE UNITED STATES IN ACCORDANCE WITH THE EXPORT ADMINISTRATION REGULATIONS. DIVERSION CONTRARY TO U.S. LAW PROHIBITED.

T-Rev D