

SMA Male to TNC Female Cable Assembly using LC085TBJ Coax, 4 FT



LCCA30622-FT4

Configuration

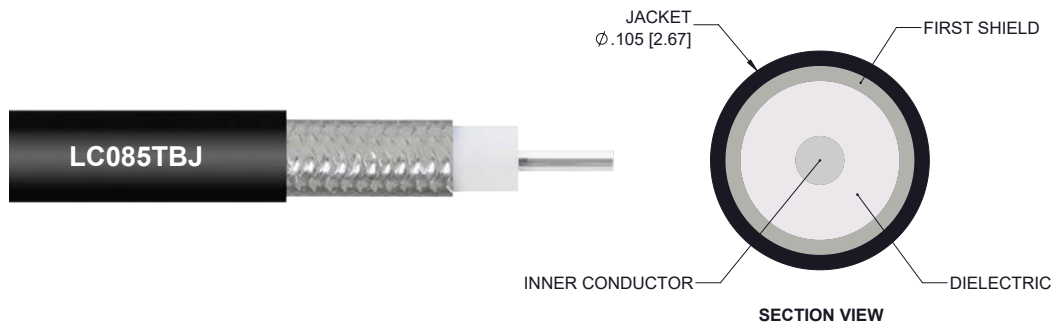
- Connector 1: SMA Male
- Connector 2: TNC Female
- Cable Type: LC085TBJ

Features

- Max Frequency 6 GHz
- Shielding Effectivity > 100dB
- PTFE Dielectric with 69.5% VoP
- Hand Formable
- Tin Filled Copper Composite Braid Outer Conductor
- FEP Jacket

Applications

- General Purpose
- Laboratory Use
- System Interconnect



Description

L-com's LCCA30622-FT4 is a SMA male to TNC female cable assembly using LC085TBJ coax, 4 FT and ships same-day. The LC085TBJ coax of this SMA cable uses the PTFE dielectric with a VoP of 69.5%. These formable RF cable assemblies are a great alternative to expensive semi-rigid assemblies because they can be hand formed to fit specific designs. Our L-com SMA to TNC cable assembly has a male to female gender configuration with formable LC085TBJ series coax and operates to 6 GHz. The jacketed tinned copper composite braid outer conductor is easily formed by hand with an overall diameter of 0.105 inches and excellent shielding effectiveness greater than 100dB.

Custom versions of this SMA male to SMA female cable, along with the rest of L-com's other RF assemblies, can also be built and shipped same day. Other available RF cable assembly value added services from L-com include connector orientation or clocking, heat shrink booting and custom labeling. RF testing can also be performed to document the electrical performance of your cable assembly. Contact a sales representative for testing or custom RF cable quotes. Part number LCCA30622-FT4 L-com SMA Male to TNC Female Cable Assembly using LC085TBJ Coax, 4 FT data sheet PDF includes details of the RF product specifications, CAD drawing(s) and dimensions below.

SMA Male to TNC Female Cable Assembly using LC085TBJ Coax, 4 FT



LCCA30622-FT4

Electrical Specifications

| Description | Minimum | Typical | Maximum | Units |
|-------------------------------|---------|---------------|---------|-----------------------|
| Frequency Range | DC | | 6 | GHz |
| VSWR | | | 1.45:1 | |
| Velocity of Propagation | | 69.5 | | % |
| RF Shielding | 100 | | | dB |
| Group Delay | | 1.43 [4.69] | | ns/ft [ns/m] |
| Capacitance | | 29 [95.14] | | pF/ft [pF/m] |
| DC Resistance Inner Conductor | | 65.7 [215.55] | | Ohms/1000ft [Ohms/Km] |
| DC Resistance Outer Conductor | | 10.2 [33.46] | | Ohms/1000ft [Ohms/Km] |

Specifications by Frequency

| Description | F1 | F2 | F3 | F4 | F5 | Units |
|-----------------------|-----|------|-----|-----|----|-------|
| Frequency | 0.5 | 1 | 2.5 | 6 | | GHz |
| Insertion Loss (Typ.) | 0.8 | 1.12 | 1.6 | 2.3 | | dB |

Electrical Specification Notes:

The Insertion Loss data above is based on the performance specifications of the coax cable and connectors used in this assembly. The Insertion Loss includes an estimated insertion loss of 0.1 dB per connector.

Mechanical Specifications

Cable Assembly

Length 48 in [121.92 cm]
Diameter 0.472 in [11.99 mm]

Cable

Cable Type LC085TBJ
Impedance 50 Ohms
Inner Conductor Type Solid
Inner Conductor Material and Plating Copper Clad Steel, Silver
Dielectric Type PTFE
Number of Shields 1
Outer Conductor Material and Plating Tinned Copper Composite Braid
Jacket Material FEP, Black
Jacket Diameter 0.105 in [2.67 mm]

One Time Minimum Bend Radius 0.5 in [12.7 mm]
Repeated Minimum Bend Radius 0.787 in [19.99 mm]

SMA Male to TNC Female Cable Assembly using LC085TBJ Coax, 4 FT



LCCA30622-FT4

Connectors

| Description | Connector 1 | Connector 2 |
|-----------------------------------|----------------------------|------------------------------------|
| Type | SMA Male | TNC Female |
| Impedance | 50 Ohms | 50 Ohms |
| Contact Material and Plating | Brass, Gold over Nickel | Beryllium Copper, Gold over Nickel |
| Dielectric Type | PTFE | PTFE |
| Body Material and Plating | Brass, Gold over Nickel | Brass, Nickel |
| Coupling Nut Material and Plating | Passivated Stainless Steel | |
| Hex Size | 5/16 inch | |
| Torque | 8 in-lbs 0.9 Nm | |

Compliance Certifications (see [product page](#) for current document)

Plotted and Other Data

Notes:

SMA Male to TNC Female Cable Assembly using LC085TBJ Coax, 4 FT



LCCA30622-FT4

How to Order

Part Number Configuration:

LCCA30622 - xx uu



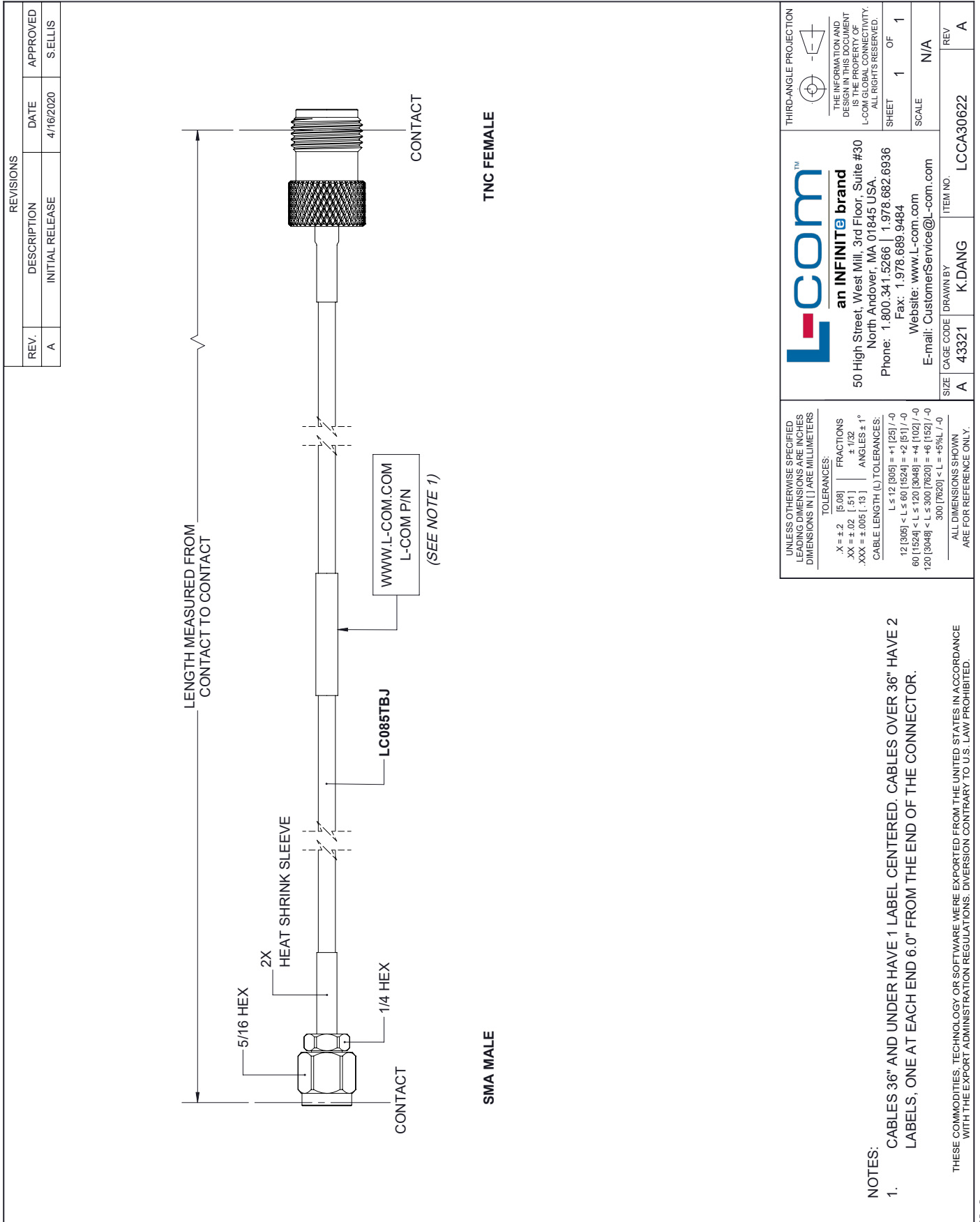
Example: LCCA30622-12 = 12 inches long cable
LCCA30622-100cm = 100 cm long cable

SMA Male to TNC Female Cable Assembly using LC085TBJ Coax, 4 FT from L-com has same day shipment for domestic and International orders. L-com is a leading manufacturer of wired and wireless connectivity products and committed to in-stock availability and same day shipping. Our portfolio includes coaxial cable assemblies, connectors, adapters and custom products as well as lightning and surge protectors, NEMA rated enclosures, and an RF product line which includes antennas, amplifiers, passive, and active components.

The information contained within this document is accurate to the best of our knowledge and representative of the part described herein. It may be necessary to make modifications to the part and/or the documentation of the part in order to impliment improvements. L-com reserves the right to make such changes as required. Unless otherwise stated, all specifications are nominal. L-com does not make any representation or warranty regarding the suitability of the part described herein for any particular purpose, and L-com does not assume liability arising out of the use of any part or document.ontained within this document is accurate to the best of our knowledge and representative of the part described herein. It may be necessary to make modifications to the part and/or the documentation of the part in order to impliment improvements. L-com reserves the right to make such changes as required. Unless otherwise stated, all specifications are nominal. L-com does not make any representation or warranty regarding the suitability of the part described herein for any particular purpose, and L-com does not assume liability arising out of the use of any part or document.

SMA Male to TNC Female Cable Assembly using LC085TBJ Coax, 4 FT

L-com CAD Drawing



| REVISIONS | | |
|-----------|-----------------|-----------|
| REV. | DESCRIPTION | DATE |
| A | INITIAL RELEASE | 4/16/2020 |
| | | APPROVED |
| | | S. ELLIS |

| | |
|---|--|
| <p>UNLESS OTHERWISE SPECIFIED LEADING DIMENSIONS ARE INCHES DIMENSIONS IN [] ARE MILLIMETERS</p> <p>TOLERANCES:</p> <p>.X = ±.2 [.08] FRACTIONS ± 1/32</p> <p>.XX = ±.02 [.51] ANGLES ± 1°</p> <p>.XXX = ±.005 [.13]</p> <p>CABLE LENGTH (L) TOLERANCES:</p> <p>L ≤ 12 [305] = ±1 [25] / -0</p> <p>12 [305] < L ≤ 60 [1524] = -2 [51] / -0</p> <p>60 [1524] < L ≤ 120 [3048] = -4 [102] / -0</p> <p>120 [3048] < L ≤ 300 [7620] = -6 [152] / -0</p> <p>300 [7620] < L = +5% / -0</p> <p>ALL DIMENSIONS SHOWN ARE FOR REFERENCE ONLY.</p> | <p>THIRD-ANGLE PROJECTION</p> <p>THE INFORMATION AND DESIGN IN THIS DOCUMENT IS THE PROPERTY OF L-COM GLOBAL CONNECTIVITY. ALL RIGHTS RESERVED.</p> <p>SHEET 1 OF 1</p> <p>SCALE N/A</p> |
| | |
| <p>SIZE A</p> <p>CAGE CODE 43321</p> <p>DRAWN BY K.DANG</p> <p>ITEM NO. LCCA30622</p> <p>REV A</p> | |

NOTES:

- CABLES 36" AND UNDER HAVE 1 LABEL CENTERED. CABLES OVER 36" HAVE 2 LABELS, ONE AT EACH END 6.0" FROM THE END OF THE CONNECTOR.

THESE COMMODITIES, TECHNOLOGY OR SOFTWARE WERE EXPORTED FROM THE UNITED STATES IN ACCORDANCE WITH THE EXPORT ADMINISTRATION REGULATIONS. DIVERSION CONTRARY TO U.S. LAW PROHIBITED.