

4.3-10 Male to 7/16 DIN Male Low PIM Cable Using TFT-402-LF Coax Using Times Microwave Components 1 Meter



**LCCA31068-M1**

**Configuration**

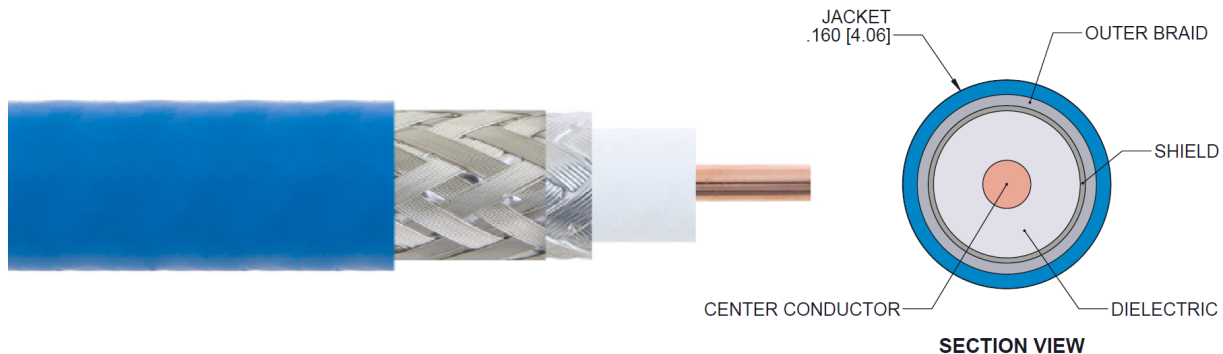
- Connector 1: 4.3-10 Male
- Connector 2: 7/16 DIN Male
- Cable Type: TFT-5G-402

**Features**

- 100% Tested with PIM Test Results Marked on Cable
- Lightweight and Extremely Flexible
- Low Loss with Excellent VSWR
- IP67 (when mated)
- Using Times Microwave Components

**Applications**

- Distributed Antenna Systems (DAS)
- Plenum Installations
- Multi-Carrier Communication Systems
- PIM Testing



**Description**

L-com's LCCA31068-M1 is a 4.3-10 male to 7/16 DIN male low PIM cable using TFT-402-LF coax using Times Microwave components 1 meter and ships same-day. The TFT-5G-402 coax of this 4.3-10 cable uses the PTFE dielectric with a VoP of 76%. These flexible RF cable assemblies are ideal for applications where flexure is required. Our L-com 4.3-10 to 7/16 DIN cable assembly has a male to male gender configuration with flexible TFT-5G-402 series coax and operates to 5.8 GHz. The double shield of this 4.3-10 cable is layered by over providing shielding effectiveness greater than 80dB. With passive intermodulation levels better than -160 dBc, our cable assembly design is ideal where low PIM is desired. Times Microwave cable is used in each assembly and TMS components are used to form connections with the super flexible low PIM cable. These cable assemblies are expertly built to satisfy your specific need with high quality Times Microwave Systems manufactured parts.

Custom versions of this 4.3-10 male to 4.3-10 male cable, along with the rest of L-com's other RF assemblies, can also be built and shipped same day. Other available RF cable assembly value added services from L-com include connector orientation or clocking, heat shrink booting and custom labeling. RF testing can also be performed to document the electrical performance of your cable assembly. Contact a sales representative for testing or custom RF cable quotes. Part number LCCA31068-M1 L-com 4.3-10 Male to 7/16 DIN Male Low PIM Cable Using TFT-402-LF Coax Using Times Microwave Components 1 Meter data sheet PDF includes details of the RF product specifications, CAD drawing(s) and dimensions below.

4.3-10 Male to 7/16 DIN Male Low PIM Cable Using TFT-402-LF Coax Using Times Microwave Components 1 Meter



**LCCA31068-M1**

**Electrical Specifications**

| Description             | Minimum | Typical     | Maximum | Units        |
|-------------------------|---------|-------------|---------|--------------|
| Frequency Range         | DC      |             | 5.8     | GHz          |
| VSWR                    |         |             | 1.4:1   |              |
| Velocity of Propagation |         | 76          |         | %            |
| RF Shielding            | 80      |             |         | dB           |
| Passive Intermodulation |         |             | -160    | dBc          |
| Capacitance             |         | 26.7 [87.6] |         | pF/ft [pF/m] |

**Specifications by Frequency**

| Description           | F1   | F2   | F3   | F4   | F5   | Units |
|-----------------------|------|------|------|------|------|-------|
| Frequency             | 0.25 | 0.5  | 1    | 2.5  | 5.8  | GHz   |
| Insertion Loss (Typ.) | 0.34 | 0.45 | 0.59 | 0.89 | 1.31 | dB    |

Electrical Specification Notes:

PIM test results vary between cables

The Insertion Loss data above is based on the performance specifications of the coax and connectors used in this assembly. The Insertion Loss includes an estimated insertion loss of 0.1\*SQRT(FGHz) dB for the 4.3-10 connector and 0.1 dB for the 7/16 DIN connector.

**Mechanical Specifications**

**Cable Assembly**

|          |                    |
|----------|--------------------|
| Length   | 39.37 in [100 cm]  |
| Diameter | 0.5 in [12.7 mm]   |
| Weight   | 0.153 lbs [69.4 g] |

**Cable**

|                                      |                    |
|--------------------------------------|--------------------|
| Cable Type                           | TFT-5G-402         |
| Impedance                            | 50 Ohms            |
| Inner Conductor Type                 | Solid              |
| Inner Conductor Material and Plating | Copper             |
| Dielectric Type                      | PTFE               |
| Number of Shields                    | 2                  |
| Jacket Material                      | FEP, Blue          |
| Jacket Diameter                      | 0.16 in [4.06 mm]  |
| One Time Minimum Bend Radius         | 0.75 in [19.05 mm] |

4.3-10 Male to 7/16 DIN Male Low PIM Cable Using TFT-402-LF Coax Using Times Microwave Components 1 Meter



## LCCA31068-M1

### Connectors

| Description                        | Connector 1       | Connector 2            |
|------------------------------------|-------------------|------------------------|
| Type                               | 4.3-10 Male       | 7/16 DIN Male          |
| Impedance                          | 50 Ohms           | 50 Ohms                |
| Mating Cycles                      | 500               |                        |
| Contact Material and Plating       | Brass, Silver     | Brass, Silver          |
| Contact Plating Specification      | 200 µin           | 5 µm                   |
| Dielectric Type                    | PTFE              | PTFE                   |
| Body Material and Plating          | Brass, Tri-Metal  | Brass, Tri-Metal       |
| Body Plating Specification         | 80 µin            | 3 µm                   |
| Coupling Nut Material and Plating  | Brass, Tri-Metal  | Brass, Tri-Metal       |
| Coupling Nut Plating Specification | 80 µin            | 3 µm                   |
| Torque                             | 44 in-lbs 4.97 Nm | 22.083 ft-lbs 29.95 Nm |

### Environmental Specifications

#### Temperature

Operating Range -55 to +85 deg C

**Compliance Certifications** (see [product page](#) for current document)

### Plotted and Other Data

Notes:

4.3-10 Male to 7/16 DIN Male Low PIM Cable Using TFT-402-LF Coax Using Times Microwave Components 1 Meter



**LCCA31068-M1**

**How to Order**

Part Number Configuration:

**LCCA31068 - xx uu**



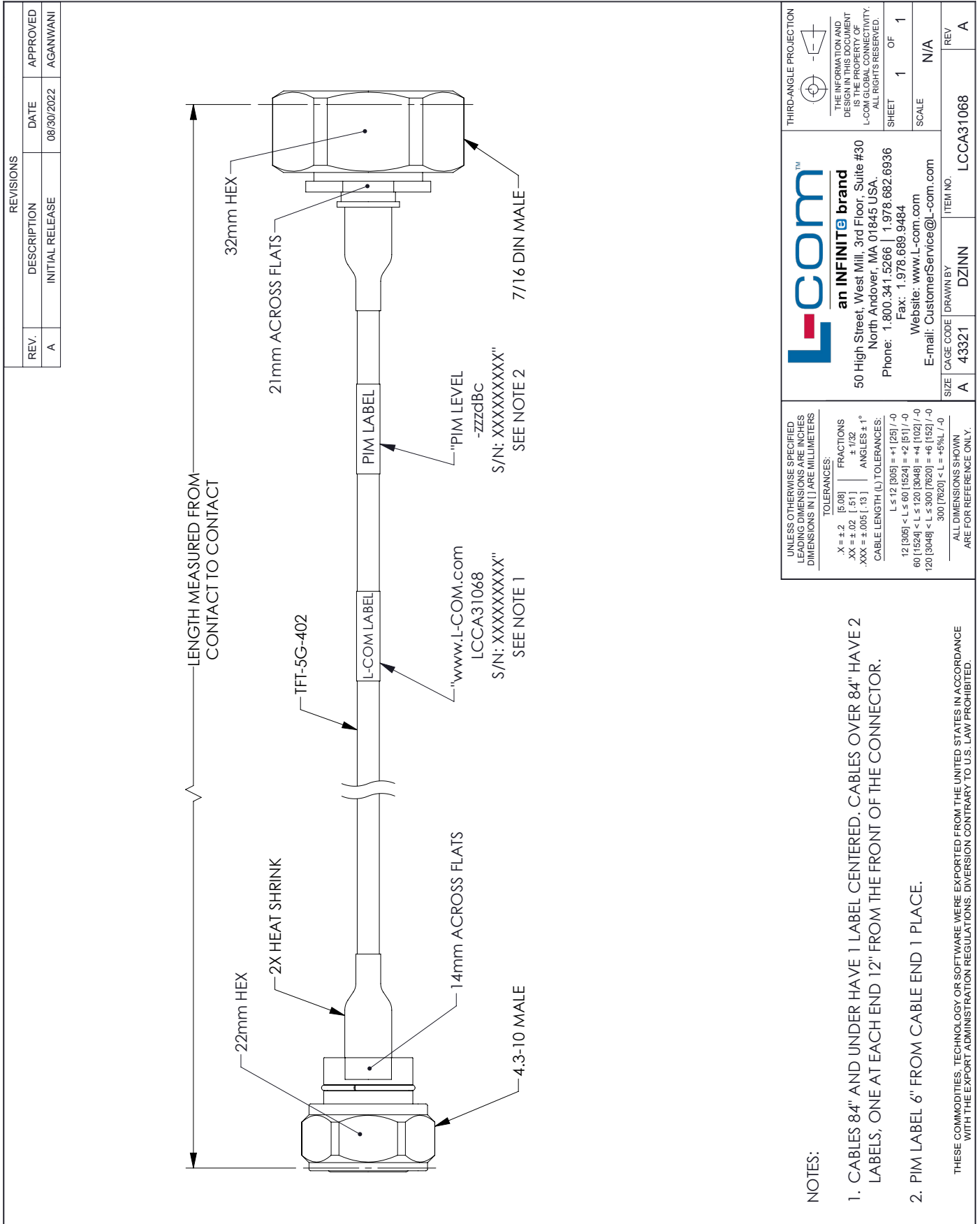
Example: LCCA31068-12 = 12 inches long cable  
LCCA31068-100cm = 100 cm long cable

4.3-10 Male to 7/16 DIN Male Low PIM Cable Using TFT-402-LF Coax Using Times Microwave Components 1 Meter from L-com has same day shipment for domestic and International orders. L-com is a leading manufacturer of wired and wireless connectivity products and committed to in-stock availability and same day shipping. Our portfolio includes coaxial cable assemblies, connectors, adapters and custom products as well as lightning and surge protectors, NEMA rated enclosures, and an RF product line which includes antennas, amplifiers, passive, and active components.

The information contained within this document is accurate to the best of our knowledge and representative of the part described herein. It may be necessary to make modifications to the part and/or the documentation of the part in order to impliment improvements. L-com reserves the right to make such changes as required. Unless otherwise stated, all specifications are nominal. L-com does not make any representation or warranty regarding the suitability of the part described herein for any particular purpose, and L-com does not assume liability arising out of the use of any part or document.ontained within this document is accurate to the best of our knowledge and representative of the part described herein. It may be necessary to make modifications to the part and/or the documentation of the part in order to impliment improvements. L-com reserves the right to make such changes as required. Unless otherwise stated, all specifications are nominal. L-com does not make any representation or warranty regarding the suitability of the part described herein for any particular purpose, and L-com does not assume liability arising out of the use of any part or document.

4.3-10 Male to 7/16 DIN Male Low PIM Cable Using TFT-402-  
LF Coax Using Times Microwave Components 1 Meter

L-com CAD Drawing



NOTES:

1. CABLES 84" AND UNDER HAVE 1 LABEL CENTERED. CABLES OVER 84" HAVE 2 LABELS, ONE AT EACH END 12" FROM THE FRONT OF THE CONNECTOR.
2. PIM LABEL 6" FROM CABLE END 1 PLACE.

THESE COMMODITIES, TECHNOLOGY OR SOFTWARE WERE EXPORTED FROM THE UNITED STATES IN ACCORDANCE WITH THE EXPORT ADMINISTRATION REGULATIONS. DIVERSION CONTRARY TO U.S. LAW PROHIBITED.

T-Rev.0