

SMA Male to MCX Jack Cable Assembly using RG316-DS Coax, 4 FT



LCCA31485-FT4

Configuration

- Connector 1: SMA Male
- Connector 2: MCX Jack
- Cable Type: RG316-DS
- Coax Flex Type: Flexible

Description

L-com's LCCA31485-FT4 is a SMA male to MCX jack cable assembly using RG316-DS coax, 4 FT and ships same-day. The RG316-DS coax of this SMA cable uses the PTFE dielectric with a VoP of 70%. These flexible RF cable assemblies are ideal for applications where flexure is required. Our L-com SMA to MCX cable assembly has a male to jack gender configuration with flexible RG316-DS series coax. The double shield of this SMA cable is layered by silver plated copper braid over silver plated copper braid.

Custom versions of this SMA male to SMA jack cable, along with the rest of L-com's other RF assemblies, can also be built and shipped same day. Other available RF cable assembly value added services from L-com include connector orientation or clocking, heat shrink booting and custom labeling. RF testing can also be performed to document the electrical performance of your cable assembly. Contact a sales representative for testing or custom RF cable quotes. Part number LCCA31485-FT4 L-com SMA Male to MCX Jack Cable Assembly using RG316-DS Coax, 4 FT data sheet PDF includes details of the RF product specifications, CAD drawing(s) and dimensions below.

Electrical Specifications

Description	Minimum	Typical	Maximum	Units
Velocity of Propagation		70		%
Capacitance		29.4 [96.46]		pF/ft [pF/m]

Mechanical Specifications

Cable Assembly

Length	48 in [121.92 cm]
Width/Diameter	0.312 in [7.92 mm]
Weight	0.074 lbs [33.57 g]

Cable

Cable Type	RG316-DS
Impedance	50 Ohms
Inner Conductor Type	Stranded
Inner Conductor Material and Plating	Copper Clad Steel, Silver
Dielectric Type	PTFE
Number of Shields	2
Shield Layer 1	Silver Plated Copper Braid
Shield Layer 2	Silver Plated Copper Braid
Jacket Material	FEP, Tan
Jacket Diameter	0.114 in [2.9 mm]
Repeated Minimum Bend Radius	0.6 in [15.24 mm]

SMA Male to MCX Jack Cable Assembly
using RG316-DS Coax, 4 FT



LCCA31485-FT4

Connectors

Description	Connector 1	Connector 2
Type	SMA Male	MCX Jack
Specification	MIL-STD-348A	
Impedance	50 Ohms	50 Ohms
Configuration	Straight	Straight
Contact Material and Plating	Brass, Gold	
Contact Plating Specification	30 µin minimum	
Dielectric Type	PTFE	
Body Material and Plating	Brass, Nickel	Brass, Nickel
Body Plating Specification	100 µin minimum	
Coupling Nut Material and Plating	Brass, Nickel	
Coupling Nut Plating Specification	100 µin minimum	
Hex Size	5/16 inch	
Torque	3 in-lbs 0.34 Nm	

Environmental Specifications

Compliance Certifications (see [product page](#) for current document)

Plotted and Other Data

Notes:

SMA Male to MCX Jack Cable Assembly
using RG316-DS Coax, 4 FT



LCCA31485-FT4

Typical Performance Data

How to Order

Part Number Configuration:

LCCA31485

- **xx**

uu

Unit of Measure:
cm = Centimeters
<blank> = Inches
Length
Base Number

Example: LCCA31485-12 = 12 inches long cable
LCCA31485-100cm = 100 cm long cable

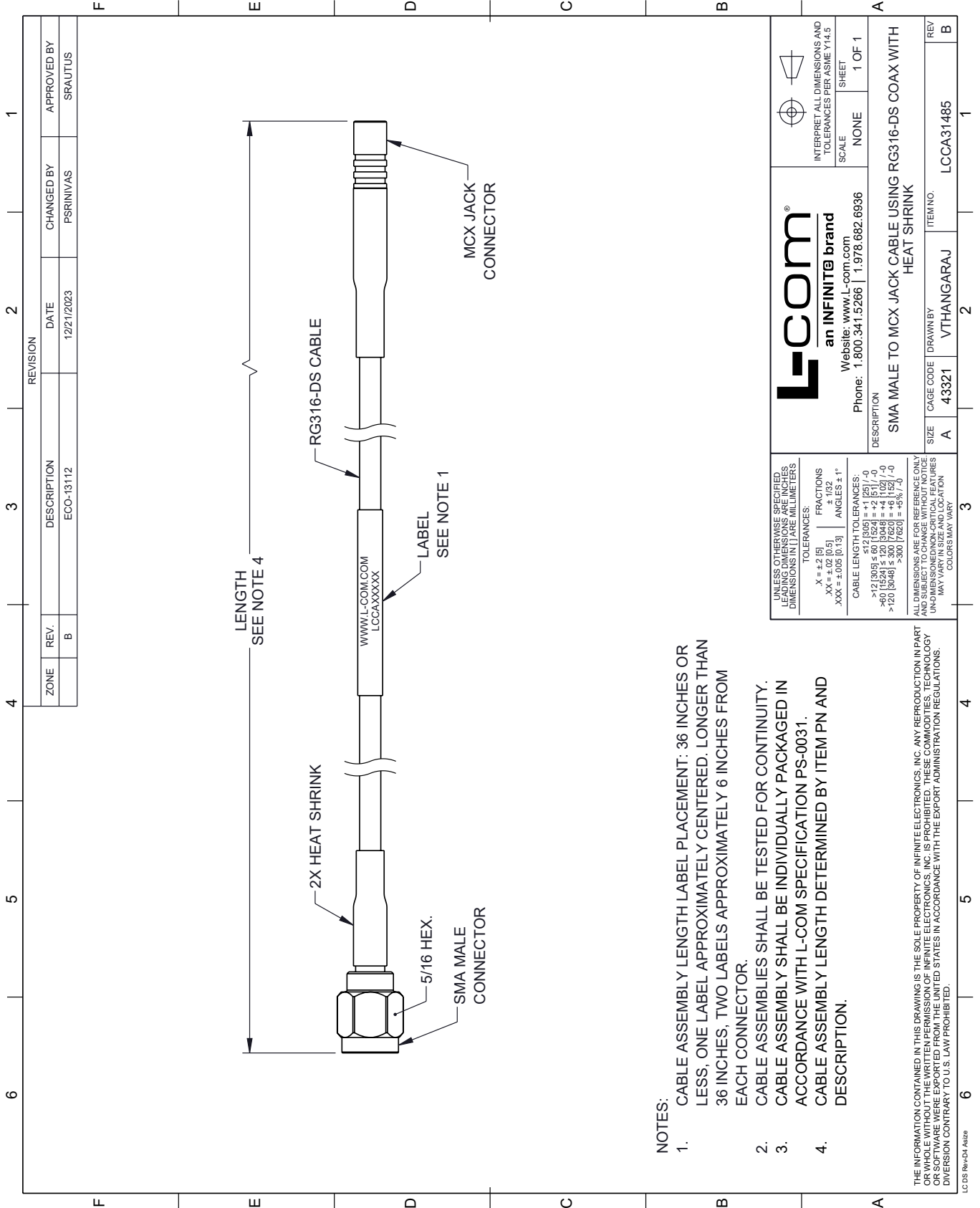
SMA Male to MCX Jack Cable Assembly using RG316-DS Coax, 4 FT from L-com has same day shipment for domestic and International orders. Our portfolio includes coaxial cable assemblies, connectors, adapters and custom products as well as lightning and surge protectors, NEMA rated enclosures, and an RF product line which includes antennas, amplifiers, passive, and active components.

URL: <https://www.l-com.com/sma-male-mcx-jack-cable-assembly-rg316-lcca31485-ft4-p.aspx>

The information contained within this document is accurate to the best of our knowledge and representative of the part described herein. It may be necessary to make modifications to the part and/or the documentation of the part in order to impliment improvements. L-com reserves the right to make such changes as required. Unless otherwise stated, all specifications are nominal. L-com does not make any representation or warranty regarding the suitability of the part described herein for any particular purpose, and L-com does not assume liability arising out of the use of any part or document.

LCCA31485-FT4 CAD Drawing



SMA Male to MCX Jack Cable Assembly using RG316-DS Coax, 4 FT



NOTES:

1. CABLE ASSEMBLY LENGTH LABEL PLACEMENT: 36 INCHES OR LESS, ONE LABEL APPROXIMATELY CENTERED, LONGER THAN 36 INCHES, TWO LABELS APPROXIMATELY 6 INCHES FROM EACH CONNECTOR.
2. CABLE ASSEMBLIES SHALL BE TESTED FOR CONTINUITY.
3. CABLE ASSEMBLY SHALL BE INDIVIDUALLY PACKAGED IN ACCORDANCE WITH L-COM SPECIFICATION PS-0031.
4. CABLE ASSEMBLY LENGTH DETERMINED BY ITEM PN AND DESCRIPTION.

THE INFORMATION CONTAINED IN THIS DRAWING IS THE SOLE PROPERTY OF INFINITE ELECTRONICS, INC. ANY REPRODUCTION IN PART OR WHOLE WITHOUT THE WRITTEN PERMISSION OF INFINITE ELECTRONICS, INC. IS PROHIBITED. THESE COMMODITIES, TECHNOLOGY OR SERVICES ARE EXPORTED FROM THE UNITED STATES IN ACCORDANCE WITH THE EXPORT ADMINISTRATION REGULATIONS. DIVERSION CONTRARY TO U.S. LAW PROHIBITED.

UNLESS OTHERWISE SPECIFIED, LEADING DIMENSIONS ARE IN INCHES. DIMENSIONS IN [] ARE MILLIMETERS.		 	
TOLERANCES:		SHEET 1 OF 1	
.X = ±.2 [5]	FRACTIONS ± 1/32	INTERPRET ALL DIMENSIONS AND TOLERANCES PER ASME Y14.5	
.XX = ±.02 [0.5]	ANGLES ± 1°	SCALE	NONE
.XXX = ±.005 [0.13]		NONE	
CABLE LENGTH TOLERANCES:		L-com an INFINITE brand Website: www.L-com.com Phone: 1.800.341.5266 1.978.682.6936	
>12 [305] ≤ 60 [1524] = ±.1 [25] / -0		SMA MALE TO MCX JACK CABLE USING RG316-DS COAX WITH HEAT SHRINK	
>60 [1524] ≤ 120 [3048] = ±.4 [102] / -0		DESCRIPTION	
>120 [3048] ≤ 300 [7620] = ±.6 [15] / -0		SIZE	A
ALL DIMENSIONS ARE FOR REFERENCE ONLY. UNDIMENSIONED NON-CRITICAL FEATURES MAY VARY IN SIZE AND LOCATION. COLORS MAY VARY.		CAGE CODE	43321
		DRAWN BY	VTHANGARAJ
		ITEM NO.	LCCA31485
		REV	B