

SMP Plug Right Angle to SMP Plug Right Angle
using RG316 Coax Cable 48 Inches



LCCA9846-48

Configuration

- Connector 1: SMP Plug Right Angle
- Connector 2: SMP Plug Right Angle
- Cable Type: RG316

Features

- VSWR of 1.4:1

Applications

- Military
- Aerospace
- Wireless Communications
- General Purpose Test

Description

L-com's LCCA9846-48 is a SMP plug right angle to SMP plug right angle using RG316 coax cable 48 inches and ships same-day. Our L-com SMP to SMP cable assembly has a plug to plug gender configuration with RG316 series coax and operates to 3 GHz. This right angle SMP cable interface on the RG316 allows for easier connections in tight spaces.

Custom versions of this SMP plug to SMP plug cable, along with the rest of L-com's other RF assemblies, can also be built and shipped same day. Other available RF cable assembly value added services from L-com include connector orientation or clocking, heat shrink booting and custom labeling. RF testing can also be performed to document the electrical performance of your cable assembly. Contact a sales representative for testing or custom RF cable quotes. Part number LCCA9846-48 L-com SMP Plug Right Angle to SMP Plug Right Angle using RG316 Coax Cable 48 Inches data sheet PDF includes details of the RF product specifications, CAD drawing(s) and dimensions below.

Electrical Specifications

Description	Minimum	Typical	Maximum	Units
Frequency Range	DC		3	GHz
VSWR			1.4:1	
Velocity of Propagation		69		%
Capacitance		29.4 [96.46]		pF/ft [pF/m]

Specifications by Frequency

Description	F1	F2	F3	F4	F5	Units
Frequency	0.1	0.25	0.5	1	3	GHz
Insertion Loss (Typ.)	0.84	1.04	1.36	1.92	2.72	dB

Electrical Specification Notes:

Insertion Loss does not include the loss of the connectors. Insertion Loss is estimated as 0.2 dB per connector

SMP Plug Right Angle to SMP Plug Right Angle
using RG316 Coax Cable 48 Inches



LCCA9846-48

Mechanical Specifications

Cable Assembly

Length* 48 in [121.92 cm]
Weight 0.145 lbs [65.77 g]

Cable

Cable Type RG316
Impedance 50 Ohms
Inner Conductor Type Stranded
Inner Conductor Material and Plating Copper Clad Steel, Silver
Dielectric Type PTFE

Connectors

Description	Connector 1	Connector 2
Type	SMP Plug Right Angle	SMP Plug Right Angle
Impedance	50 Ohms	50 Ohms
Contact Material and Plating	Beryllium Copper, Gold over Copper	Beryllium Copper, Gold over Copper
Body Material and Plating	Bronze, Copper-Tin-Zinc Alloy	Bronze, Copper-Tin-Zinc Alloy

Compliance Certifications (see [product page](#) for current document)

Plotted and Other Data

Notes:

- Values at 25°C, sea level.

SMP Plug Right Angle to SMP Plug Right Angle
using RG316 Coax Cable 48 Inches

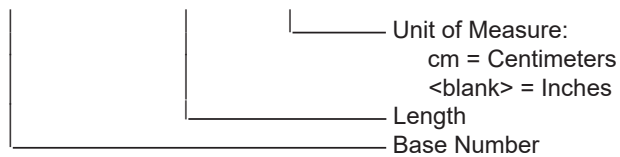


LCCA9846-48

How to Order

Part Number Configuration:

LCCA9846 - xx uu

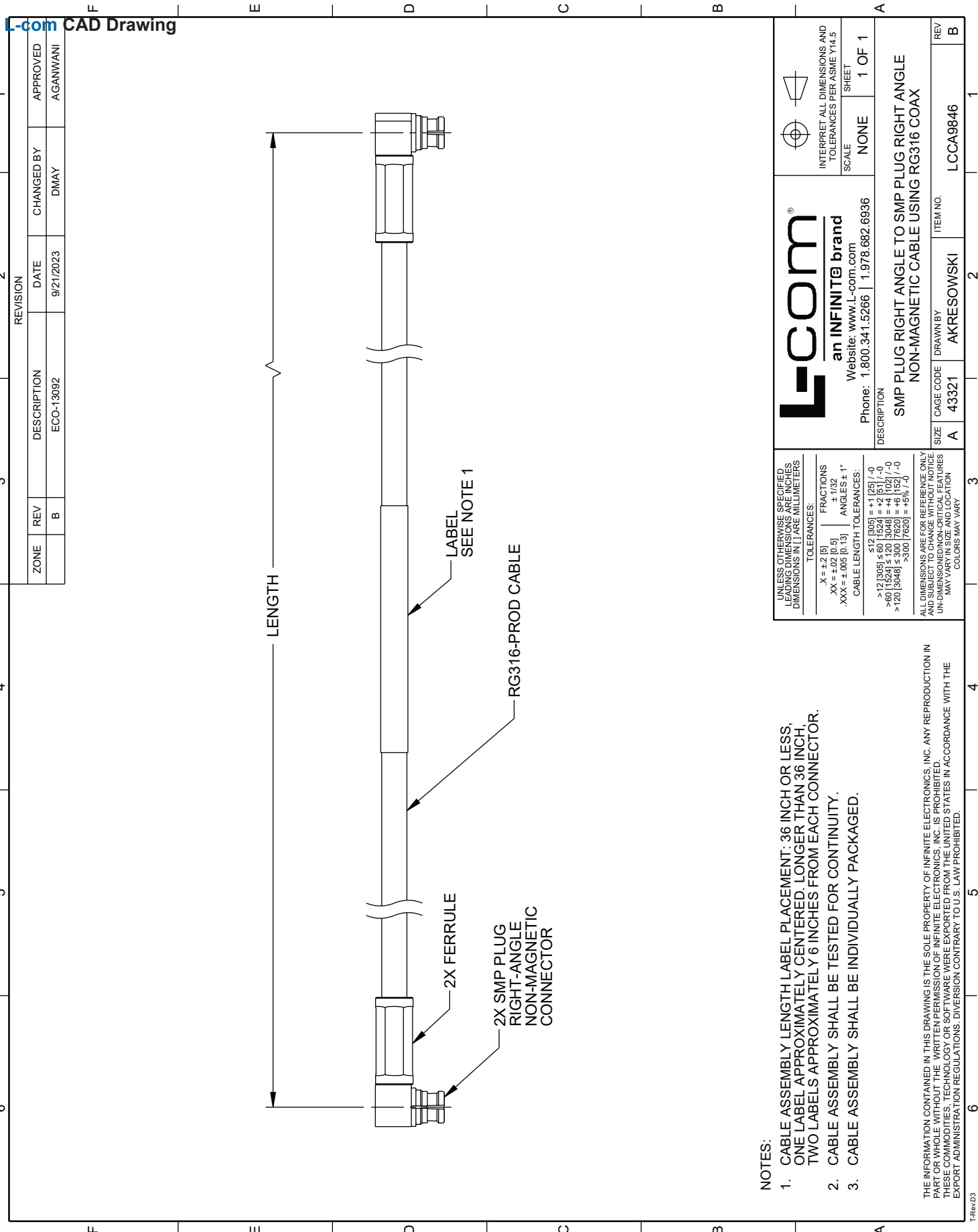


Example: LCCA9846-12 = 12 inches long cable
LCCA9846-100cm = 100 cm long cable

SMP Plug Right Angle to SMP Plug Right Angle using RG316 Coax Cable 48 Inches from L-com has same day shipment for domestic and International orders. L-com is a leading manufacturer of wired and wireless connectivity products and committed to in-stock availability and same day shipping. Our portfolio includes coaxial cable assemblies, connectors, adapters and custom products as well as lightning and surge protectors, NEMA rated enclosures, and an RF product line which includes antennas, amplifiers, passive, and active components.

The information contained within this document is accurate to the best of our knowledge and representative of the part described herein. It may be necessary to make modifications to the part and/or the documentation of the part in order to impliment improvements. L-com reserves the right to make such changes as required. Unless otherwise stated, all specifications are nominal. L-com does not make any representation or warranty regarding the suitability of the part described herein for any particular purpose, and L-com does not assume liability arising out of the use of any part or document.ontained within this document is accurate to the best of our knowledge and representative of the part described herein. It may be necessary to make modifications to the part and/or the documentation of the part in order to impliment improvements. L-com reserves the right to make such changes as required. Unless otherwise stated, all specifications are nominal. L-com does not make any representation or warranty regarding the suitability of the part described herein for any particular purpose, and L-com does not assume liability arising out of the use of any part or document.

SMP Plug Right Angle to SMP Plug Right Angle using RG316 Coax Cable 48 Inches



NOTES:

1. CABLE ASSEMBLY LENGTH LABEL PLACEMENT: 36 INCH OR LESS, ONE LABEL APPROXIMATELY CENTERED. LONGER THAN 36 INCH, TWO LABELS APPROXIMATELY 6 INCHES FROM EACH CONNECTOR.
2. CABLE ASSEMBLY SHALL BE TESTED FOR CONTINUITY.
3. CABLE ASSEMBLY SHALL BE INDIVIDUALLY PACKAGED.

THE INFORMATION CONTAINED IN THIS DRAWING IS THE SOLE PROPERTY OF INFINITE ELECTRONICS, INC. ANY REPRODUCTION IN ANY FORM OR BY ANY MEANS WITHOUT THE WRITTEN PERMISSION OF INFINITE ELECTRONICS, INC. IS PROHIBITED. THESE COMMODITIES, TECHNOLOGY OR SOFTWARE WERE EXPORTED FROM THE UNITED STATES IN ACCORDANCE WITH THE EXPORT ADMINISTRATION REGULATIONS. DIVERSION CONTRARY TO U.S. LAW PROHIBITED.

UNLESS OTHERWISE SPECIFIED, LEADING DIMENSIONS ARE IN INCHES, DIMENSIONS IN PAREMILLIMETERS	
TOLERANCES:	FRACTIONS
.X = ±.2 [5]	± 1/32
.XX = ±.02 [0.5]	ANGLES ± 1°
.XXX = ±.005 [0.13]	CABLE LENGTH TOLERANCES:
	<12 [305] = +1 [25] / -0
	>12 [305] ≤ 60 [1524] = +2 [51] / -0
	>60 [1524] ≤ 120 [3048] = +4 [102] / -0
	>120 [3048] ≤ 300 [7620] = +6 [152] / -0
	>300 [7620] = +5% / -0
ALL DIMENSIONS ARE FOR REFERENCE ONLY AND SUBJECT TO CHANGE WITHOUT NOTICE UNLESS INDICATED OTHERWISE. DIMENSIONS MAY VARY. COLORS MAY VARY.	

L-com
an INFINITE® brand
Website: www.L-com.com
Phone: 1.800.341.5266 | 1.978.682.6936

INTERPRET ALL DIMENSIONS AND TOLERANCES PER ASME Y14.5
SCALE NONE
SHEET 1 OF 1

DESCRIPTION	
SMP PLUG RIGHT ANGLE TO SMP PLUG RIGHT ANGLE NON-MAGNETIC CABLE USING RG316 COAX	
SIZE	ITEM NO.
A 43321	LCCA9846
REV	B

REV	B
-----	---

REVISION		APPROVED
ZONE	DESCRIPTION	CHANGED BY
B	ECO-13092	DMAY
REV	DATE	AGANWANI
	9/21/2023	