

SMB Jack Bulkhead Mount to SMB Jack Bulkhead Mount using RG316 Coax Cable 48 Inches



**LCCA9850-48**

**Configuration**

- Connector 1: SMB Jack Bulkhead
- Connector 2: SMB Jack Bulkhead
- Cable Type: RG316

**Features**

- VSWR of 1.4:1

**Applications**

- Military
- Aerospace
- Wireless Communications
- General Purpose Test

**Description**

L-com's LCCA9850-48 is a SMB jack bulkhead mount to SMB jack bulkhead mount using RG316 coax cable 48 inches and ships same-day. Our L-com SMB to SMB cable assembly has a jack to jack gender configuration with RG316 series coax and operates to 3 GHz. L-com's RF cable assembly with SMB bulkhead interface enables system designers to have external connections on their product enclosures or to be used for other rack mount and panel mount applications.

Custom versions of this SMB jack to SMB jack cable, along with the rest of L-com's other RF assemblies, can also be built and shipped same day. Other available RF cable assembly value added services from L-com include connector orientation or clocking, heat shrink booting and custom labeling. RF testing can also be performed to document the electrical performance of your cable assembly. Contact a sales representative for testing or custom RF cable quotes. Part number LCCA9850-48 L-com SMB Jack Bulkhead Mount to SMB Jack Bulkhead Mount using RG316 Coax Cable 48 Inches data sheet PDF includes details of the RF product specifications, CAD drawing(s) and dimensions below.

**Electrical Specifications**

Description	Minimum	Typical	Maximum	Units
Frequency Range	DC		3	GHz
VSWR			1.4:1	
Velocity of Propagation		69		%
Capacitance		29.4 [96.46]		pF/ft [pF/m]

**Specifications by Frequency**

Description	F1	F2	F3	F4	F5	Units
Frequency	0.1	0.25	0.5	1	3	GHz
Insertion Loss (Typ.)	0.64	0.84	1.16	1.72	2.52	dB

**Electrical Specification Notes:**

Insertion Loss does not include the loss of the connectors. Insertion Loss is estimated as 0.2 dB per connector

SMB Jack Bulkhead Mount to SMB Jack Bulkhead  
Mount using RG316 Coax Cable 48 Inches



## LCCA9850-48

### Mechanical Specifications

#### Cable Assembly

Length*	48 in [121.92 cm]
Weight	0.075 lbs [34.02 g]

#### Cable

Cable Type	RG316
Impedance	50 Ohms
Inner Conductor Type	Stranded
Inner Conductor Material and Plating	Copper Clad Steel, Silver
Dielectric Type	PTFE

### Connectors

Description	Connector 1	Connector 2
Type	SMB Jack Bulkhead	SMB Jack Bulkhead
Impedance	50 Ohms	50 Ohms
Contact Material and Plating	Bronze, Gold over Copper	Bronze, Gold over Copper
Body Material and Plating	Bronze, Copper-Tin-Zinc Alloy	Bronze, Copper-Tin-Zinc Alloy

**Compliance Certifications** (see [product page](#) for current document)

### Plotted and Other Data

Notes:

- Values at 25°C, sea level.

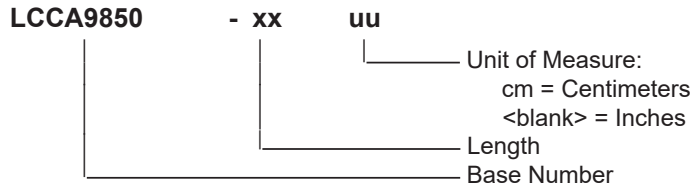
SMB Jack Bulkhead Mount to SMB Jack Bulkhead Mount using RG316 Coax Cable 48 Inches



**LCCA9850-48**

**How to Order**

Part Number Configuration:

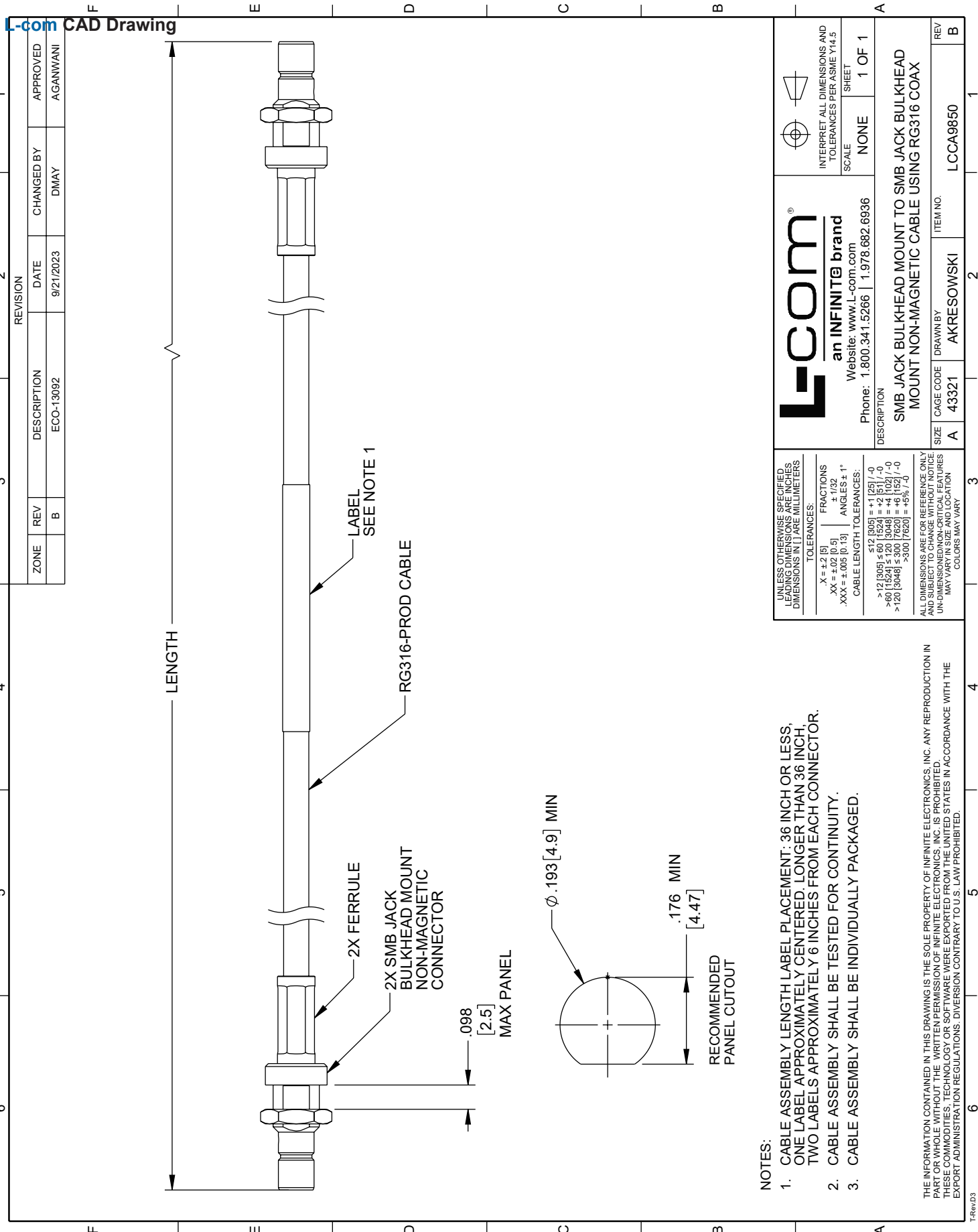


Example: LCCA9850-12 = 12 inches long cable  
LCCA9850-100cm = 100 cm long cable

SMB Jack Bulkhead Mount to SMB Jack Bulkhead Mount using RG316 Coax Cable 48 Inches from L-com has same day shipment for domestic and International orders. L-com is a leading manufacturer of wired and wireless connectivity products and committed to in-stock availability and same day shipping. Our portfolio includes coaxial cable assemblies, connectors, adapters and custom products as well as lightning and surge protectors, NEMA rated enclosures, and an RF product line which includes antennas, amplifiers, passive, and active components.

The information contained within this document is accurate to the best of our knowledge and representative of the part described herein. It may be necessary to make modifications to the part and/or the documentation of the part in order to implement improvements. L-com reserves the right to make such changes as required. Unless otherwise stated, all specifications are nominal. L-com does not make any representation or warranty regarding the suitability of the part described herein for any particular purpose, and L-com does not assume liability arising out of the use of any part or document contained within this document is accurate to the best of our knowledge and representative of the part described herein. It may be necessary to make modifications to the part and/or the documentation of the part in order to implement improvements. L-com reserves the right to make such changes as required. Unless otherwise stated, all specifications are nominal. L-com does not make any representation or warranty regarding the suitability of the part described herein for any particular purpose, and L-com does not assume liability arising out of the use of any part or document.

SMB Jack Bulkhead Mount to SMB Jack Bulkhead Mount using RG316 Coax Cable 48 Inches



NOTES:

1. CABLE ASSEMBLY LENGTH LABEL PLACEMENT: 36 INCH OR LESS, ONE LABEL APPROXIMATELY CENTERED. LONGER THAN 36 INCH, TWO LABELS APPROXIMATELY 6 INCHES FROM EACH CONNECTOR.
2. CABLE ASSEMBLY SHALL BE TESTED FOR CONTINUITY.
3. CABLE ASSEMBLY SHALL BE INDIVIDUALLY PACKAGED.

THE INFORMATION CONTAINED IN THIS DRAWING IS THE SOLE PROPERTY OF INFINITE ELECTRONICS, INC. ANY REPRODUCTION IN ANY FORM OR BY ANY MEANS WITHOUT THE WRITTEN PERMISSION OF INFINITE ELECTRONICS, INC. IS PROHIBITED. THESE COMMODITIES, TECHNOLOGY OR SOFTWARE WERE EXPORTED FROM THE UNITED STATES IN ACCORDANCE WITH THE EXPORT ADMINISTRATION REGULATIONS. DIVERSION CONTRARY TO U.S. LAW PROHIBITED.

UNLESS OTHERWISE SPECIFIED, LEADING DIMENSIONS ARE IN INCHES UNLESS INDICATED OTHERWISE IN MILLIMETERS	
TOLERANCES:	FRACTIONS
.X = ±.2 [5]	± 1/32
.XX = ±.02 [0.5]	± 1/64
.XXX = ±.005 [0.13]	ANGLES ± 1°
CABLE LENGTH TOLERANCES:	
<math>\leq 12 [305]</math>	±.125 [-0]
<math>> 12 [305] \leq 60 [1524]</math>	±.25 [-0]
<math>> 60 [1524] \leq 120 [3048]</math>	±.5 [-0]
<math>> 120 [3048] \leq 300 [7620]</math>	±.75 [-0]
<math>> 300 [7620]</math>	±.75 [-0]
ALL DIMENSIONS ARE FOR REFERENCE ONLY AND SUBJECT TO CHANGE WITHOUT NOTICE UNLESS DIMENSIONED NON-CRITICAL FEATURES MAY VARY. COLORS MAY VARY.	

 <b>L-com</b> <sup>®</sup> an INFINITE brand Website: www.L-com.com Phone: 1.800.341.5266   1.978.682.6936		INTERPRET ALL DIMENSIONS AND TOLERANCES PER ASME Y14.5 SCALE: NONE SHEET: 1 OF 1
DESCRIPTION: SMB JACK BULKHEAD MOUNT TO SMB JACK BULKHEAD MOUNT NON-MAGNETIC CABLE USING RG316 COAX		
SIZE: A	CAGE CODE: 43321	ITEM NO.: LCCA9850
DRAWN BY: AKRESOWSKI	REV: B	

T-RevD3