

4.3-10 Plug to 4.3-10 Plug Non-Magnetic Cable
using 0.141 Formable Coax 48 Inches



LCCA9858-48

Configuration

- Connector 1: 4.3-10 Plug
- Connector 2: 4.3-10 Plug

Features

- Magnetic Susceptibility 10^{-5}
- VSWR of 1.4:1

Applications

- Medical
- Quantum Computing
- Military
- Aerospace

Description

L-com's LCCA9858-48 is a 4.3-10 plug to 4.3-10 plug non-magnetic cable using 0.141 formable coax 48 inches and ships same-day. Our L-com 4.3-10 to 4.3-10 cable assembly has a plug to plug gender configuration with series coax and operates to 6 GHz. L-com's Non Magnetic connectors are manufactured with materials that are especially adapted to non magnetism. Our non-magnetic connectors have a higher magnetic susceptibility than existing standard connectors made of brass/nickel materials. As a result, our non-magnetic connectors are transparent to the magnetic field, which means no field distortion and a higher Signal-to-Noise Ratio (SNR).

Custom versions of this 4.3-10 plug to 4.3-10 plug cable, along with the rest of L-com's other RF assemblies, can also be built and shipped same day. Other available RF cable assembly value added services from L-com include connector orientation or clocking, heat shrink booting and custom labeling. RF testing can also be performed to document the electrical performance of your cable assembly. Contact a sales representative for testing or custom RF cable quotes. Part number LCCA9858-48 L-com 4.3-10 Plug to 4.3-10 Plug Non-Magnetic Cable using 0.141 Formable Coax 48 Inches data sheet PDF includes details of the RF product specifications, CAD drawing(s) and dimensions below.

Electrical Specifications

Description	Minimum	Typical	Maximum	Units
Frequency Range	DC		6	GHz
VSWR			1.4:1	
Velocity of Propagation		70		%
Capacitance		29.4 [96.46]		pF/ft [pF/m]

Specifications by Frequency

Description	F1	F2	F3	F4	F5	Units
Frequency	0.5	1	2.5	6		GHz
Insertion Loss (Typ.)	0.64	0.84	1.16	1.92		dB

Electrical Specification Notes:

Insertion Loss does not include the loss of the connectors. Insertion Loss is estimated as 0.2 dB per connector

4.3-10 Plug to 4.3-10 Plug Non-Magnetic Cable
using 0.141 Formable Coax 48 Inches



LCCA9858-48

Mechanical Specifications

Cable Assembly

Length*	48 in [121.92 cm]
Weight	0.23 lbs [104.33 g]

Cable

Impedance	50 Ohms
-----------	---------

Connectors

Description	Connector 1	Connector 2
Type	4.3-10 Plug	4.3-10 Plug
Impedance	50 Ohms	50 Ohms
Contact Material and Plating	Brass, Silver	Brass, Silver
Body Material and Plating	Brass, Copper-Tin-Zinc Alloy	Brass, Copper-Tin-Zinc Alloy

Compliance Certifications (see [product page](#) for current document)

Plotted and Other Data

Notes:

- Values at 25°C, sea level.

4.3-10 Plug to 4.3-10 Plug Non-Magnetic Cable
using 0.141 Formable Coax 48 Inches



LCCA9858-48

How to Order

Part Number Configuration:

LCCA9858 - xx uu

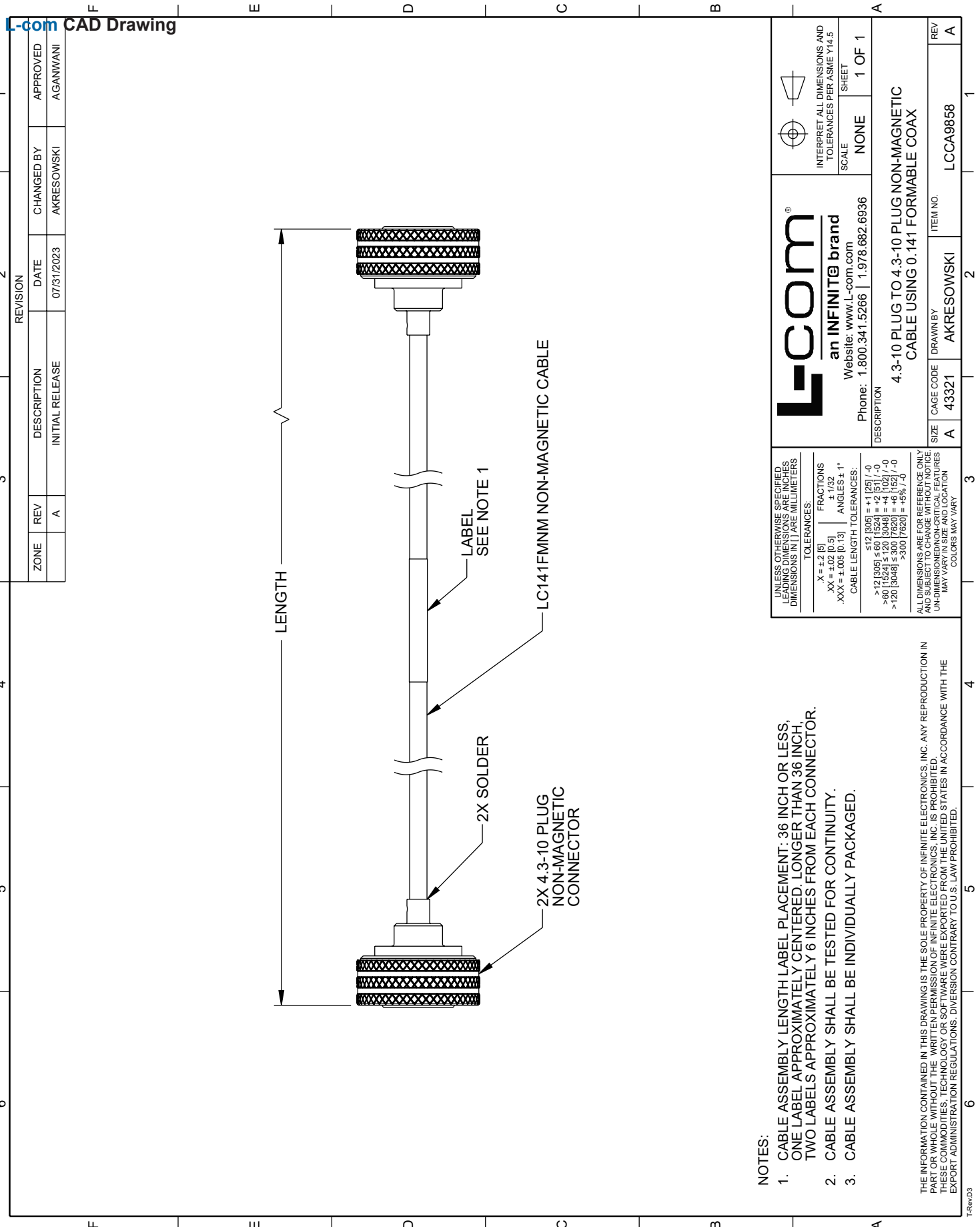


Example: LCCA9858-12 = 12 inches long cable
LCCA9858-100cm = 100 cm long cable

4.3-10 Plug to 4.3-10 Plug Non-Magnetic Cable using 0.141 Formable Coax 48 Inches from L-com has same day shipment for domestic and International orders. L-com is a leading manufacturer of wired and wireless connectivity products and committed to in-stock availability and same day shipping. Our portfolio includes coaxial cable assemblies, connectors, adapters and custom products as well as lightning and surge protectors, NEMA rated enclosures, and an RF product line which includes antennas, amplifiers, passive, and active components.

The information contained within this document is accurate to the best of our knowledge and representative of the part described herein. It may be necessary to make modifications to the part and/or the documentation of the part in order to impliment improvements. L-com reserves the right to make such changes as required. Unless otherwise stated, all specifications are nominal. L-com does not make any representation or warranty regarding the suitability of the part described herein for any particular purpose, and L-com does not assume liability arising out of the use of any part or document.ontained within this document is accurate to the best of our knowledge and representative of the part described herein. It may be necessary to make modifications to the part and/or the documentation of the part in order to impliment improvements. L-com reserves the right to make such changes as required. Unless otherwise stated, all specifications are nominal. L-com does not make any representation or warranty regarding the suitability of the part described herein for any particular purpose, and L-com does not assume liability arising out of the use of any part or document.

4.3-10 Plug to 4.3-10 Plug Non-Magnetic Cable using 0.141 Formable Coax 48 Inches




NOTES:

1. CABLE ASSEMBLY LENGTH LABEL PLACEMENT: 36 INCH OR LESS, ONE LABEL APPROXIMATELY CENTERED. LONGER THAN 36 INCH, TWO LABELS APPROXIMATELY 6 INCHES FROM EACH CONNECTOR.
2. CABLE ASSEMBLY SHALL BE TESTED FOR CONTINUITY.
3. CABLE ASSEMBLY SHALL BE INDIVIDUALLY PACKAGED.

THE INFORMATION CONTAINED IN THIS DRAWING IS THE SOLE PROPERTY OF INFINITE ELECTRONICS, INC. ANY REPRODUCTION IN WHOLE OR IN PART WITHOUT THE WRITTEN PERMISSION OF INFINITE ELECTRONICS, INC. IS PROHIBITED. THESE COMMODITIES, TECHNOLOGY OR SOFTWARE WERE EXPORTED FROM THE UNITED STATES IN ACCORDANCE WITH THE EXPORT ADMINISTRATION REGULATIONS. DIVERSION CONTRARY TO U.S. LAW PROHIBITED.

UNLESS OTHERWISE SPECIFIED, LEADING DIMENSIONS ARE IN INCHES. DIMENSIONS IN [] ARE MILLIMETERS.	
TOLERANCES:	FRACTIONS
.X = ±.2 [5]	± 1/32
.XX = ±.02 [0.5]	ANGLES ± 1°
.XXX = ±.005 [0.13]	CABLE LENGTH TOLERANCES:
	<12 [305] = ±1 [25] / -0
	>12 [305] < 60 [1524] = +2 [51] / -0
	>60 [1524] < 120 [3048] = +4 [102] / -0
	>120 [3048] < 300 [7620] = +6 [152] / -0
	>300 [7620] = +5% / -0
ALL DIMENSIONS ARE FOR REFERENCE ONLY AND SUBJECT TO CHANGE WITHOUT NOTICE UNLESS DIMENSIONS/CRITICAL FEATURES MAY VARY. COLORS MAY VARY.	

 an INFINITE® brand Website: www.L-com.com Phone: 1.800.341.5266 1.978.682.6936		INTERPRET ALL DIMENSIONS AND TOLERANCES PER ASME Y14.5 SCALE: NONE SHEET: 1 OF 1
DESCRIPTION: 4.3-10 PLUG TO 4.3-10 PLUG NON-MAGNETIC CABLE USING 0.141 FORMABLE COAX		
SIZE: A	CAGE CODE: 43321	ITEM NO.: LCCA9858
REV: A	DRAWN BY: AKRESOWSKI	REV: A

ZONE	REV	DESCRIPTION	DATE	CHANGED BY	APPROVED
	A	INITIAL RELEASE	07/31/2023	AKRESOWSKI	AGANWANI

L-com CAD Drawing

T-RwD3