

SMB Jack Bulkhead Mount to SMB Plug using RG316 Coax Cable in 24 Inches



**LCCA9861-24**

**Configuration**

- Connector 1: SMB Jack Bulkhead
- Connector 2: SMB Plug

**Features**

- VSWR of 1.4:1

**Applications**

- Military
- Aerospace
- Wireless Communications
- General Purpose Test

**Description**

L-com's LCCA9861-24 is a SMB jack bulkhead mount to SMB plug using RG316 coax cable in 24 inches and ships same-day. Our L-com SMB to SMB cable assembly has a jack to plug gender configuration with series coax and operates to 3 GHz. L-com's RF cable assembly with SMB bulkhead interface enables system designers to have external connections on their product enclosures or to be used for other rack mount and panel mount applications.

Custom versions of this SMB jack to SMB plug cable, along with the rest of L-com's other RF assemblies, can also be built and shipped same day. Other available RF cable assembly value added services from L-com include connector orientation or clocking, heat shrink booting and custom labeling. RF testing can also be performed to document the electrical performance of your cable assembly. Contact a sales representative for testing or custom RF cable quotes. Part number LCCA9861-24 L-com SMB Jack Bulkhead Mount to SMB Plug using RG316 Coax Cable in 24 Inches data sheet PDF includes details of the RF product specifications, CAD drawing(s) and dimensions below.

**Electrical Specifications**

Description	Minimum	Typical	Maximum	Units
Frequency Range	DC		3	GHz
VSWR			1.4:1	
Velocity of Propagation		69		%
Capacitance		29.4 [96.46]		pF/ft [pF/m]

**Specifications by Frequency**

Description	F1	F2	F3	F4	F5	Units
Frequency	0.1	0.25	0.5	1	3	GHz
Insertion Loss (Typ.)	0.46	0.6	0.8	1	1.76	dB

Electrical Specification Notes:

Insertion Loss does not include the loss of the connectors. Insertion Loss is estimated as 0.2 dB per connector

**Mechanical Specifications**

**Cable Assembly**

Length\* 24 in [609.6 mm]

SMB Jack Bulkhead Mount to SMB Plug using  
RG316 Coax Cable in 24 Inches



## LCCA9861-24

Weight	0.121 lbs [54.88 g]
<b>Cable</b>	
Impedance	50 Ohms
Inner Conductor Type	Stranded
Inner Conductor Material and Plating	Copper Clad Steel, Silver
Dielectric Type	PTFE

### Connectors

Description	Connector 1	Connector 2
Type	SMB Jack Bulkhead	SMB Plug
Impedance	50 Ohms	50 Ohms
Contact Material and Plating	Bronze, Gold over Copper	Beryllium Copper, Gold over Copper
Body Material and Plating	Bronze, Copper-Tin-Zinc Alloy	Bronze, Copper-Tin-Zinc Alloy

**Compliance Certifications** (see [product page](#) for current document)

### Plotted and Other Data

Notes:

- Values at 25°C, sea level.

SMB Jack Bulkhead Mount to SMB Plug using  
RG316 Coax Cable in 24 Inches



## LCCA9861-24

### How to Order

Part Number Configuration:

**LCCA9861 - xx uu**

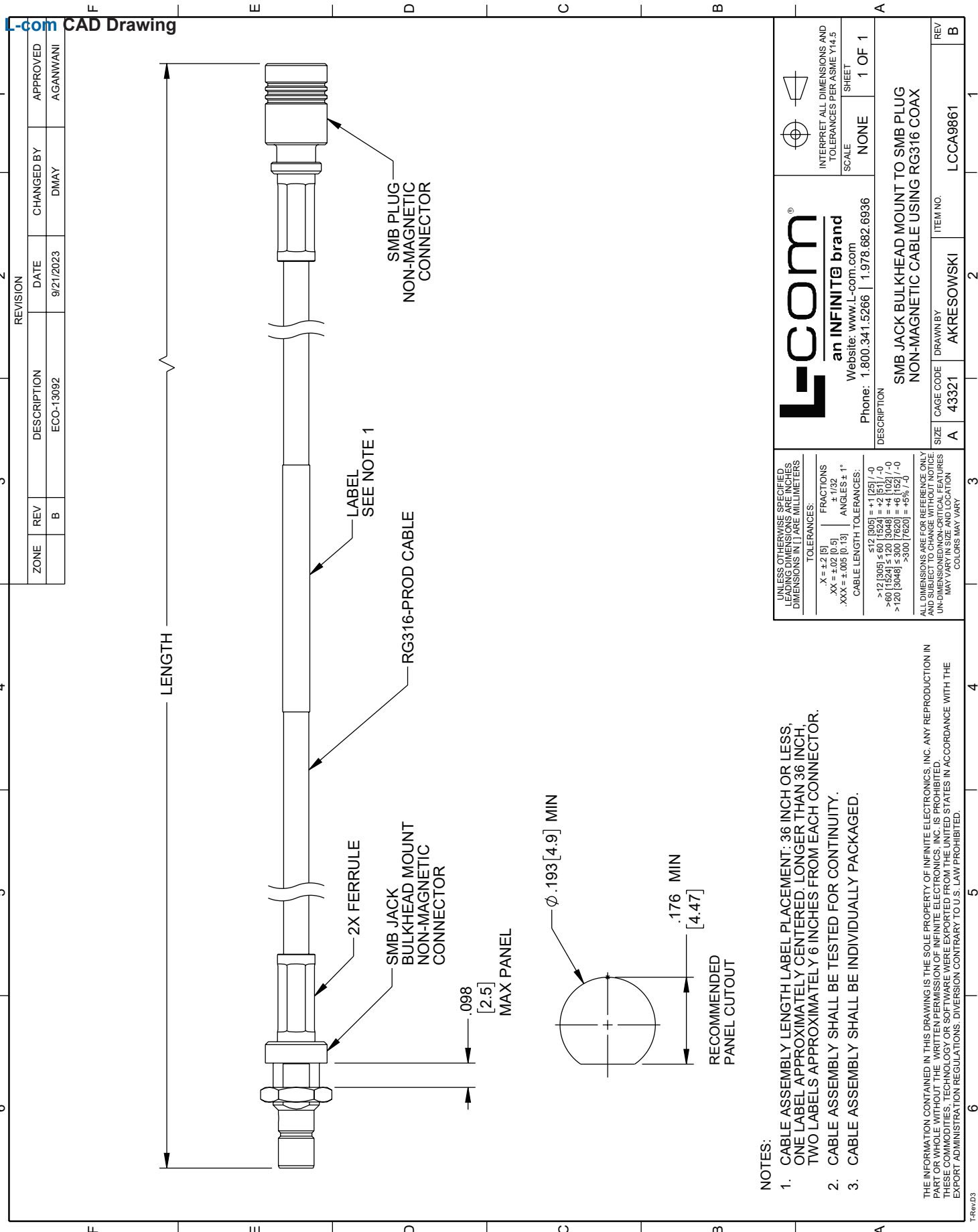
Unit of Measure:  
cm = Centimeters  
<blank> = Inches  
Length  
Base Number

Example: LCCA9861-12 = 12 inches long cable  
LCCA9861-100cm = 100 cm long cable

SMB Jack Bulkhead Mount to SMB Plug using RG316 Coax Cable in 24 Inches from L-com has same day shipment for domestic and International orders. L-com is a leading manufacturer of wired and wireless connectivity products and committed to in-stock availability and same day shipping. Our portfolio includes coaxial cable assemblies, connectors, adapters and custom products as well as lightning and surge protectors, NEMA rated enclosures, and an RF product line which includes antennas, amplifiers, passive, and active components.

The information contained within this document is accurate to the best of our knowledge and representative of the part described herein. It may be necessary to make modifications to the part and/or the documentation of the part in order to impliment improvements. L-com reserves the right to make such changes as required. Unless otherwise stated, all specifications are nominal. L-com does not make any representation or warranty regarding the suitability of the part described herein for any particular purpose, and L-com does not assume liability arising out of the use of any part or document.ontained within this document is accurate to the best of our knowledge and representative of the part described herein. It may be necessary to make modifications to the part and/or the documentation of the part in order to impliment improvements. L-com reserves the right to make such changes as required. Unless otherwise stated, all specifications are nominal. L-com does not make any representation or warranty regarding the suitability of the part described herein for any particular purpose, and L-com does not assume liability arising out of the use of any part or document.

# SMB Jack Bulkhead Mount to SMB Plug using RG316 Coax Cable in 24 Inches



**NOTES:**

1. CABLE ASSEMBLY LENGTH LABEL PLACEMENT: 36 INCH OR LESS, ONE LABEL APPROXIMATELY CENTERED. LONGER THAN 36 INCH, TWO LABELS APPROXIMATELY 6 INCHES FROM EACH CONNECTOR.
2. CABLE ASSEMBLY SHALL BE TESTED FOR CONTINUITY.
3. CABLE ASSEMBLY SHALL BE INDIVIDUALLY PACKAGED.

THE INFORMATION CONTAINED IN THIS DRAWING IS THE SOLE PROPERTY OF INFINITE ELECTRONICS, INC. ANY REPRODUCTION IN WHOLE OR IN PART WITHOUT THE WRITTEN PERMISSION OF INFINITE ELECTRONICS, INC. IS PROHIBITED. THESE COMMODITIES, TECHNOLOGY OR SOFTWARE WERE EXPORTED FROM THE UNITED STATES IN ACCORDANCE WITH THE EXPORT ADMINISTRATION REGULATIONS. DIVERSION CONTRARY TO U.S. LAW PROHIBITED.

REVISION		CHANGED BY	APPROVED
ZONE	REV	DESCRIPTION	DATE
	B	ECO-13092	9/21/2023
		DMAY	AGANWANI

 <b>an INFINITE brand</b> Website: www.L-com.com		INTERPRET ALL DIMENSIONS AND TOLERANCES PER ASME Y14.5
Phone: 1.800.341.5266   1.978.682.6936		SCALE: NONE SHEET: 1 OF 1
DESCRIPTION: SMB JACK BULKHEAD MOUNT TO SMB PLUG NON-MAGNETIC CABLE USING RG316 COAX		
SIZE: A	CAGE CODE: 43321	DRAWN BY: AKRESOWSKI
ITEM NO.: LCCA9861		REV: B

UNLESS OTHERWISE SPECIFIED, LEADING DIMENSIONS ARE INCHES UNLESS INDICATED OTHERWISE IN MILLIMETERS.

TOLERANCES:

.X = ±.2 [5]	FRACTIONS ± 1/32
.XX = ±.02 [0.5]	ANGLES ± 1°
.XXX = ±.005 [0.13]	

CABLE LENGTH TOLERANCES:

≤ 12 [305]	± 1/25 [-0]
> 12 [305] ≤ 60 [1524]	± 2 [51] [-0]
> 60 [1524] ≤ 120 [3048]	± 4 [102] [-0]
> 120 [3048] ≤ 300 [7620]	± 6 [152] [-0]
> 300 [7620]	± 8 [203] [-0]

ALL DIMENSIONS ARE FOR REFERENCE ONLY AND SUBJECT TO CHANGE WITHOUT NOTICE UNLESS INDICATED OTHERWISE. DIMENSIONS MAY VARY. COLORS MAY VARY.